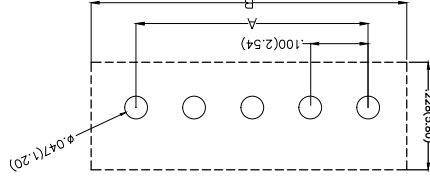
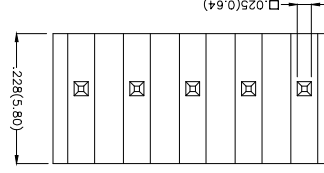
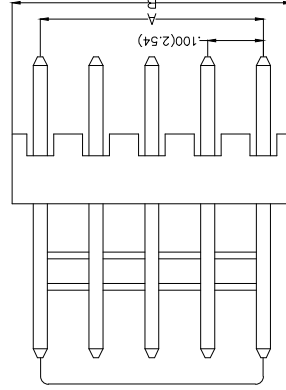
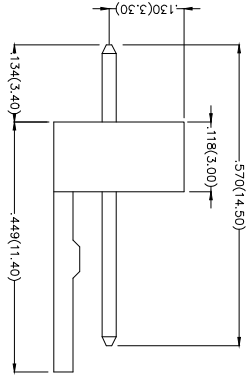


REV	LOCATIONS	DESCRIPTION	DATE	REVISER	APPD

Electrical
 Current Rating: 2.5A AC(rms)/DC
 Voltage Rating: 250V AC(rms)/DC
 Contact Resistance: 20 mΩ Max
 Insulation Resistance: 1000 MΩ MIN
 Withstanding Voltage: 1000V AC r.m.s
 Temperature Range-Operating: -25°C~+85°C
 Material and Plating
 Housing: PA66(UL 94V-2)
 Contact Pin: Brass
 Plating: Tin Plated



Recommended P.C. Board Layout

THIRD ANGLE PROJECTION	DESIGN UNITS Inch (metric)	SCALE 5:1 A4
------------------------	----------------------------	--------------

GENERAL TOLERANCES (UNLESS SPECIFIED)	CHECKED BY	DATE	PART NO.	ITEM NO.
X.±.5	FRANK	8/JUL/13	FWF25401-SXXS22WB	FWF25401
X.±.2(0.30)				
X.±.008(0.20)	JACOB	8/JUL/13		
X.±.1	DRAWN BY	DATE	TITLE	
.XXX±.004(0.10)	CHERRY	8/JUL/13	Wire to Board (Water) Pitch 2.54mm 180° Vertical (DIP)	

THIS DRAWING CONTAINS INFORMATION THAT IS PROPRIETARY TO TXGA INDUSTRIAL ELECTRONICS(SZ)CO.,LTD AND SHOULD NOT BE USED WITHOUT WRITTEN PERMISSION				
SHEET NO. 1/2				
REV 0				




Ordering Information

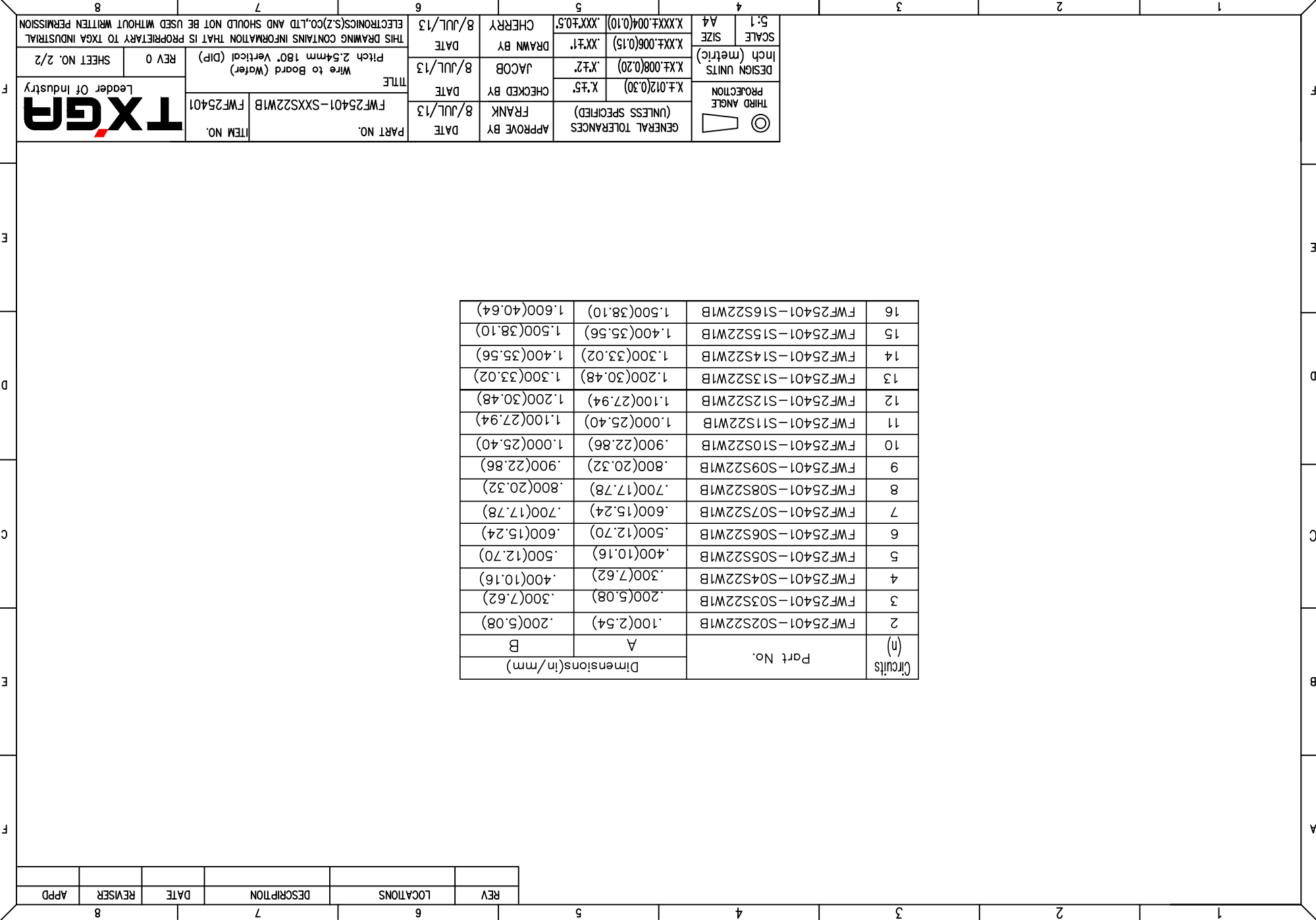
FWF 254 01 - S XX S 2 2 W1 B
 1 2 3 4 5 6 7 8 9 10

- 1 Category FWF-Water
- 2 Series Number 254-Pitch 2.54mm
- 3 Distinction No. 01
- 4 Row Option S-Single Row
- 5 Circuits XX
- 6 Entry Angle S-180° Vertical
- 7 Plating 2-Tin Plated
- 8 Material-Resin 2-PA66
- 9 Color-Resin W1-White
- 10 Packaging B-PE Bag

REV	LOCATIONS	DESCRIPTION	DATE	REVISER	APPD

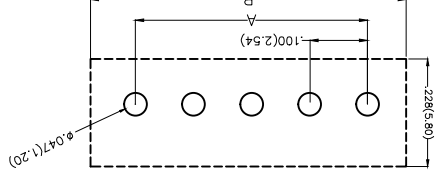
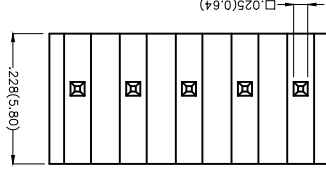
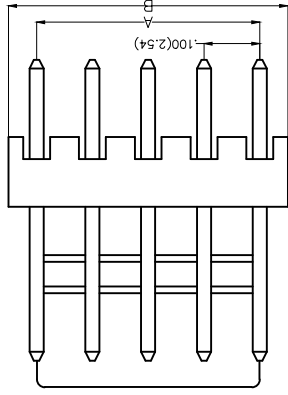
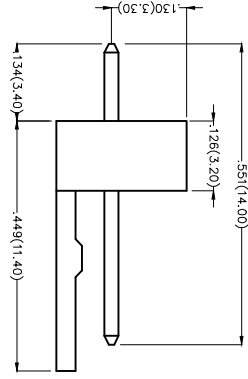
Circuits (n)	Part No.	Dimensions(in/mm)	
		A	B
2	FWF25401-S02S22W1B	.100(2.54)	.200(5.08)
3	FWF25401-S03S22W1B	.200(5.08)	.300(7.62)
4	FWF25401-S04S22W1B	.300(7.62)	.400(10.16)
5	FWF25401-S05S22W1B	.400(10.16)	.500(12.70)
6	FWF25401-S06S22W1B	.500(12.70)	.600(15.24)
7	FWF25401-S07S22W1B	.600(15.24)	.700(17.78)
8	FWF25401-S08S22W1B	.700(17.78)	.800(20.32)
9	FWF25401-S09S22W1B	.800(20.32)	.900(22.86)
10	FWF25401-S10S22W1B	.900(22.86)	1.000(25.40)
11	FWF25401-S11S22W1B	1.000(25.40)	1.100(27.94)
12	FWF25401-S12S22W1B	1.100(27.94)	1.200(30.48)
13	FWF25401-S13S22W1B	1.200(30.48)	1.300(33.02)
14	FWF25401-S14S22W1B	1.300(33.02)	1.400(35.56)
15	FWF25401-S15S22W1B	1.400(35.56)	1.500(38.10)
16	FWF25401-S16S22W1B	1.500(38.10)	1.600(40.64)

 THIRD ANGLE PROJECTION	DESIGN UNITS	X.±.012(0.30)	CHECKED BY	FRANK	DATE	8/JUL/13	APPROVE BY	FRANK	DATE	8/JUL/13	PART NO.	FWF25401-SXXS22W1B	ITEM NO.	FWF25401
	Inch (metric)	X.±.008(0.20)	JACOB	DATE	8/JUL/13	TITLE	Wire to Board (Water) Pitch 2.54mm 180° Vertical (DIP)	DRAWN BY	JACOB	DATE	8/JUL/13	THIS DRAWING CONTAINS INFORMATION THAT IS PROPRIETARY TO TXGA INDUSTRIAL ELECTRONICS(SZ)CO.,LTD AND SHOULD NOT BE USED WITHOUT WRITTEN PERMISSION	REV 0	SHEET NO. 2/2
SCALE	SIZE	5:1 A4	GENERAL TOLERANCES (UNLESS SPECIFIED)	X.±.5	DATE	8/JUL/13	CHERRY	DATE	8/JUL/13					



REV	LOCATIONS	DESCRIPTION	DATE	REVISER	APPD

Electrical
 Current Rating: 2.5A AC(rms)/DC
 Voltage Rating: 250V AC(rms)/DC
 Contact Resistance: 20 mΩ Max
 Insulation Resistance: 1000 MΩ MIN
 Withstanding Voltage: 1000V AC r.m.s
 Temperature Range—Operating: -25°C~+85°C
 Material and Plating
 Housing: PA66(UL 94V-2)
 Contact Pin: Brass
 Plating: Tin Plated



Recommended P.C.Board Layout

Ordering Information

FWF 254 01 - S XX S 2 2 W5 B
 1 2 3 4 5 6 7 8 9 10


- 1 Category | FWF-Water
- 2 Series Number | 254-Pitch2.54mm
- 3 Distinction No. | 01
- 4 Row Option | Single Row
- 5 Circuits | XX
- 6 Entry Angle | S-180° Vertical
- 7 Plating | 2-Tin Plated
- 8 Material-Resin | 2-PA66
- 9 Color-Resin | W5-Natural
- 10 Packaging | B-PE Bag

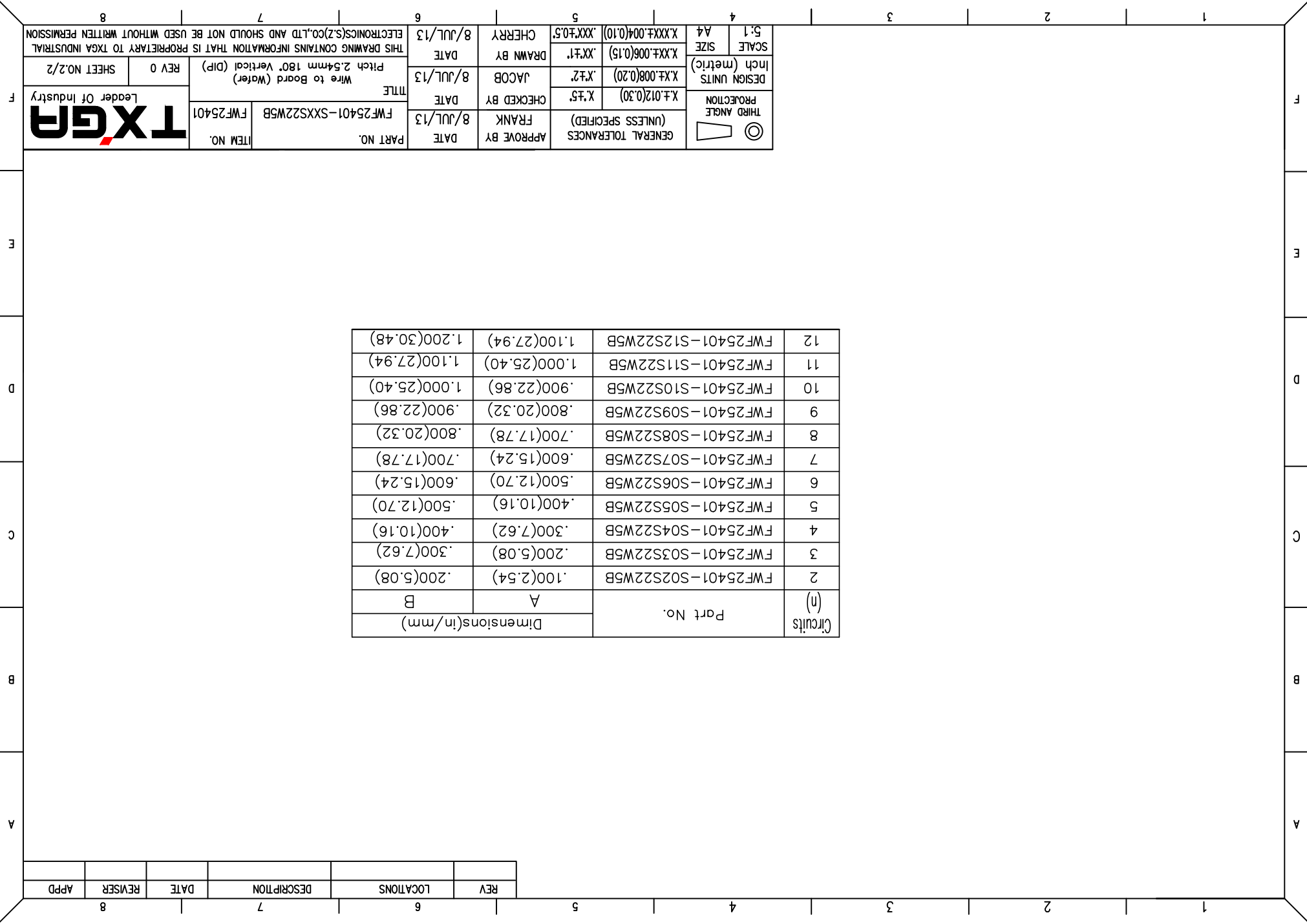
THIRD ANGLE PROJECTION	DESIGN UNITS Inch (metric)	SCALE 5:1 A4	GENERAL TOLERANCES (UNLESS SPECIFIED)	APPROVE BY FRANK	DATE 8/JUL/13	PART NO. FWF25401-SXXS22W5B	ITEM NO.
⊙	X.±.008(0.20) X.±.006(0.15) X.±.004(0.10)	X.±.2 X.±.1	X.±.5 X.±.1 .XXX±.05	CHECKED BY JACOB	DATE 8/JUL/13	TITLE Wire to Board (Water) Pitch 2.54mm 180° Vertical (DIP)	REV 0
				DRAWN BY CHERRY	DATE 8/JUL/13	THIS DRAWING CONTAINS INFORMATION THAT IS PROPRIETARY TO TXGA INDUSTRIAL ELECTRONICS(SZ)CO.,LTD AND SHOULD NOT BE USED WITHOUT WRITTEN PERMISSION	



REV	LOCATIONS	DESCRIPTION	DATE	REVISER	APPD

Circuits (n)	Part No.	Dimensions(in/mm)	
		A	B
2	FWF25401-S02S22W5B	.100(2.54)	.200(5.08)
3	FWF25401-S03S22W5B	.200(5.08)	.300(7.62)
4	FWF25401-S04S22W5B	.300(7.62)	.400(10.16)
5	FWF25401-S05S22W5B	.400(10.16)	.500(12.70)
6	FWF25401-S06S22W5B	.500(12.70)	.600(15.24)
7	FWF25401-S07S22W5B	.600(15.24)	.700(17.78)
8	FWF25401-S08S22W5B	.700(17.78)	.800(20.32)
9	FWF25401-S09S22W5B	.800(20.32)	.900(22.86)
10	FWF25401-S10S22W5B	.900(22.86)	1.000(25.40)
11	FWF25401-S11S22W5B	1.000(25.40)	1.100(27.94)
12	FWF25401-S12S22W5B	1.100(27.94)	1.200(30.48)

 THIRD ANGLE PROJECTION	DESIGN UNITS	X.±.012(0.30)	APPROVE BY	FRANK	DATE	8/JUL/13	PART NO.	FWF25401-SXXS22W5B	ITEM NO.	FWF25401
	INCH (metric)	X.±.008(0.20)	CHECKED BY	JACOB	DATE	8/JUL/13	TITLE	Wire to Board (Water) Pitch 2.54mm 180° Vertical (DIP)	REV 0	SHEET NO.2/2
SCALE	SIZE	A4	DRAWN BY	CHEERY	DATE	8/JUL/13	THIS DRAWING CONTAINS INFORMATION THAT IS PROPRIETARY TO TXGA INDUSTRIAL ELECTRONICS(SZ)CO.,LTD AND SHOULD NOT BE USED WITHOUT WRITTEN PERMISSION			
GENERAL TOLERANCES (UNLESS SPECIFIED)		X.±.004(0.10)								
		X.±.05								
		X.±.006(0.15)								
		X.±.05								
		X.±.004(0.10)								



X-ON Electronics

Largest Supplier of Electrical and Electronic Components

Click to view similar products for [Headers & Wire Housings](#) category:

Click to view products by [TXGA](#) manufacturer:

Other Similar products are found below :

[95000-104TRLF](#) [10135584-644402LF](#) [DF62W-EP2022PCA](#) [95000-106TRLF](#) [DF62W-2022SCA](#) [DF62W-EP2022PC](#) [2203348](#) [DF62W-2022SC](#) [1084018](#) [1029039](#) [1084017](#) [802-10-012-10-002000](#) [1112640](#) [1112639](#) [891-007-9SS-BST1T](#) [000-34000](#) [0008550134](#) [0009482033](#) [0009507031](#) [57102-F02-18ULF](#) [57102-S06-03LF](#) [57202-S52-04LF](#) [PCN6-15S-2.5E](#) [0039019024](#) [58102-G61-06LF](#) [582553-1](#) [0009485154](#) [0009508121](#) [0022285053](#) [0050291907](#) [018731A](#) [LY20-4P-DT1-P1E-BR](#) [02.125.8002.8](#) [60101931](#) [60598-1 \(Cut Strip\)](#) [M1625-3R/100](#) [61062-3](#) [61082-181009](#) [CSU011177004](#) [636-1427](#) [638009-1](#) [641938-9](#) [641991-4](#) [644168-1](#) [644827-2](#) [647662-1](#) [65039-019ELF](#) [65692-001LF](#) [65781-018](#) [65781-047](#)