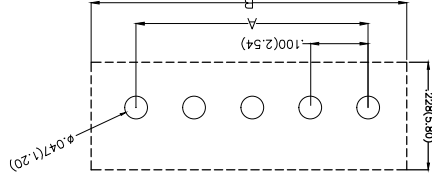
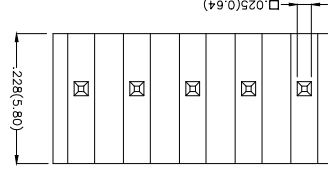
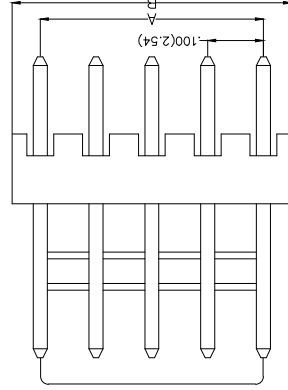
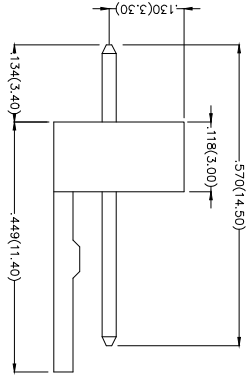


REV	LOCATIONS	DESCRIPTION	DATE	REVISER	APPD

Electrical  
 Current Rating: 2.5A AC(rms)/DC  
 Voltage Rating: 250V AC(rms)/DC  
 Contact Resistance: 20 mΩ Max  
 Insulation Resistance: 1000 MΩ MIN  
 Withstanding Voltage: 1000V AC r.m.s  
 Temperature Range-Operating: -25°C~+85°C  
 Material and Plating  
 Housing: PA66( UL 94V-2)  
 Contact Pin: Brass  
 Plating: Tin Plated



Recommended P.C. Board Layout

THIRD ANGLE PROJECTION	DESIGN UNITS Inch (metric)	SCALE 5:1 A4
------------------------	----------------------------	--------------

GENERAL TOLERANCES (UNLESS SPECIFIED)	CHECKED BY X.±5	DATE 8/JUL/13
APPROVE BY FRANK	DRAWN BY JACOB	DATE 8/JUL/13
CHERRY	DATE 8/JUL/13	

GENERAL TOLERANCES (UNLESS SPECIFIED)	CHECKED BY X.±5	DATE 8/JUL/13	ITEM NO.	PART NO.	TITLE	WIRE TO BOARD (WATER) PITCH 2.54mm 180° Vertical (DIP)	REV 0	SHEET NO. 1/2
APPROVE BY FRANK	DRAWN BY JACOB	DATE 8/JUL/13	FWF25401	FWF25401-SXXS22WB	FWF25401			
CHERRY	DATE 8/JUL/13							

1	Category	2	Series Number	3	Distinction No.	4	Row Option	5	Circuits
	FWF-Water		254-Pitch 2.54mm		01		S-Single Row		XX
6	Entry Angle	7	Plating	8	Material-Resin	9	Color-Resin	10	Packaging
	S-180° Vertical		Z-Tin Plated		Z-PA66		W1-White		B-PE Bag

FWF 254 01 - S XX S 2 2 W1 B  
 1 2 3 4 5 6 7 8 9 10

Ordering Information

D

C

E

F

F

E

D


C

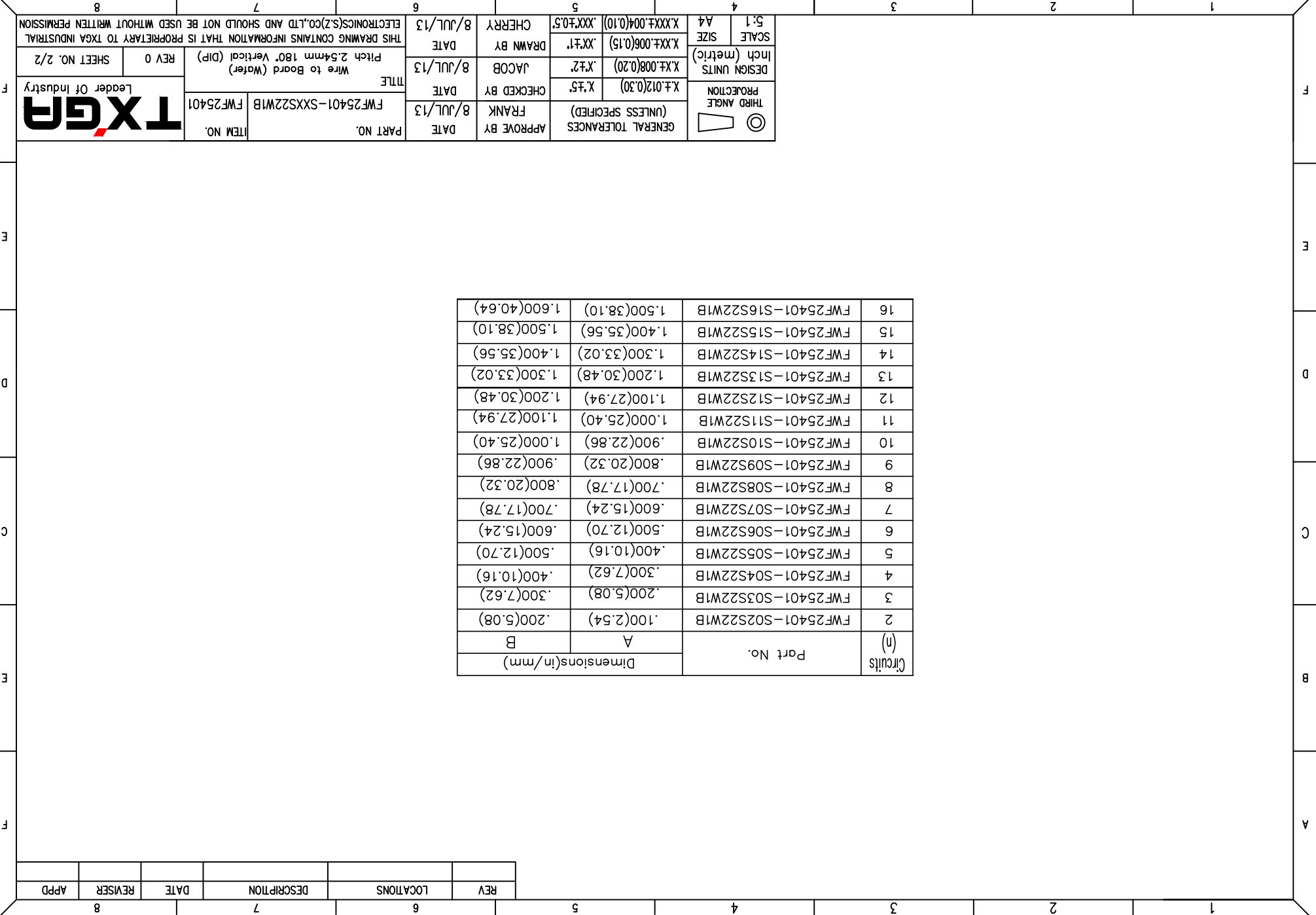
B

A

REV	LOCATIONS	DESCRIPTION	DATE	REVISER	APPD

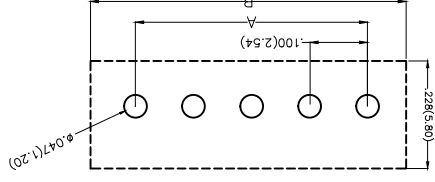
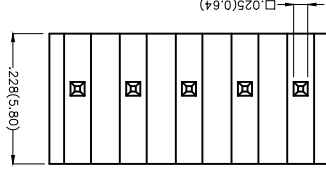
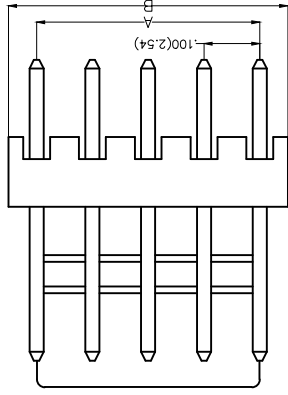
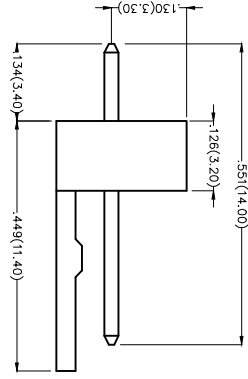
Circuits (n)	Part No.	Dimensions(in/mm)	
		A	B
2	FWF25401-S02S22W1B	.100(2.54)	.200(5.08)
3	FWF25401-S03S22W1B	.200(5.08)	.300(7.62)
4	FWF25401-S04S22W1B	.300(7.62)	.400(10.16)
5	FWF25401-S05S22W1B	.400(10.16)	.500(12.70)
6	FWF25401-S06S22W1B	.500(12.70)	.600(15.24)
7	FWF25401-S07S22W1B	.600(15.24)	.700(17.78)
8	FWF25401-S08S22W1B	.700(17.78)	.800(20.32)
9	FWF25401-S09S22W1B	.800(20.32)	.900(22.86)
10	FWF25401-S10S22W1B	.900(22.86)	1.000(25.40)
11	FWF25401-S11S22W1B	1.000(25.40)	1.100(27.94)
12	FWF25401-S12S22W1B	1.100(27.94)	1.200(30.48)
13	FWF25401-S13S22W1B	1.200(30.48)	1.300(33.02)
14	FWF25401-S14S22W1B	1.300(33.02)	1.400(35.56)
15	FWF25401-S15S22W1B	1.400(35.56)	1.500(38.10)
16	FWF25401-S16S22W1B	1.500(38.10)	1.600(40.64)

 THIRD ANGLE PROJECTION	DESIGN UNITS	X.±.012(0.30)	CHECKED BY	FRANK	DATE	8/JUL/13	APPROVE BY	FRANK	DATE	8/JUL/13	PART NO.	FWF25401-SXXS22W1B	ITEM NO.	FWF25401
	Inch (metric)	X.±.008(0.20)	JACOB	DATE	8/JUL/13	TITLE	Wire to Board (Water) Pitch 2.54mm 180° Vertical (DIP)	DRAWN BY	JACOB	DATE	8/JUL/13	THIS DRAWING CONTAINS INFORMATION THAT IS PROPRIETARY TO TXGA INDUSTRIAL ELECTRONICS(SZ)CO.,LTD AND SHOULD NOT BE USED WITHOUT WRITTEN PERMISSION	REV 0	SHEET NO. 2/2
SCALE	SIZE	5:1 A4	GENERAL TOLERANCES (UNLESS SPECIFIED)	X.±.5	DATE	8/JUL/13	CHERRY	DATE	8/JUL/13					



REV	LOCATIONS	DESCRIPTION	DATE	REVISER	APPD

Electrical  
 Current Rating: 2.5A AC(rms)/DC  
 Voltage Rating: 250V AC(rms)/DC  
 Contact Resistance: 20 mΩ Max  
 Insulation Resistance: 1000 MΩ MIN  
 Withstanding Voltage: 1000V AC r.m.s  
 Temperature Range—Operating: -25°C~+85°C  
 Material and Plating  
 Housing: PA66( UL 94V-2)  
 Contact Pin: Brass  
 Plating: Tin Plated



Recommended P.C. Board Layout

Ordering Information

FWF 254 01 - S XX S 2 2 W5 B  
 1 2 3 4 5 6 7 8 9 10

- Category: FWF-Water
- Series Number: 254-Pitch 2.54mm
- Distinction No.: 01
- Row Option: Single Row
- Circuits: XX
- Entry Angle: S-180° Vertical
- Plating: 2-Tin Plated
- Material-Resin: 2-PA66
- Color-Resin: W5-Natural
- Packaging: B-PE Bag


THIRD ANGLE	PROJECTION	X.±.012(0.30)	X.±.75	DATE	8/JUL/13	PART NO.	FWF25401-SXXS22W5B	ITEM NO.	FWF25401
GENERAL TOLERANCES (UNLESS SPECIFIED)	FRANK	DATE	8/JUL/13	APPROVE BY	FRANK	DATE	8/JUL/13	TITLE	Wire to Board (Water) Pitch 2.54mm 180° Vertical (DIP)
DESIGN UNITS Inch (metric)	JACOB	CHECKED BY	JACOB	CHECKED BY	JACOB	DATE	8/JUL/13	REV 0	SHEET NO.1/2
SCALE	A4	DRAWN BY	CHEERY	DRAWN BY	CHEERY	DATE	8/JUL/13	REV 0	SHEET NO.1/2
5:1	X.XX±.004(0.10)	DATE	8/JUL/13	DATE	8/JUL/13	DATE	8/JUL/13	REV 0	SHEET NO.1/2

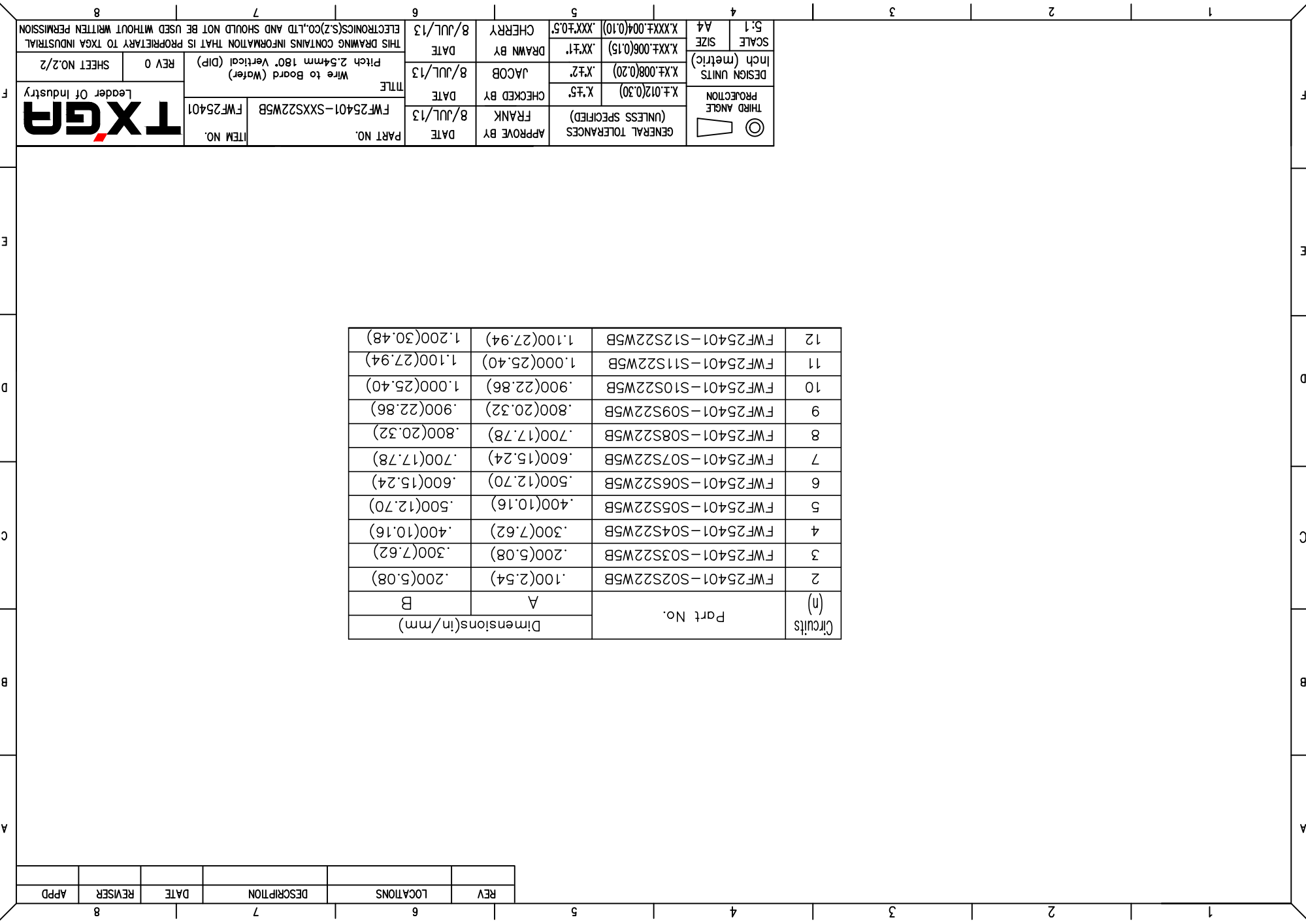


THIS DRAWING CONTAINS INFORMATION THAT IS PROPRIETARY TO TXGA INDUSTRIAL ELECTRONICS(SZ)CO.,LTD AND SHOULD NOT BE USED WITHOUT WRITTEN PERMISSION

REV	LOCATIONS	DESCRIPTION	DATE	REVISER	APPD

Circuits (n)	Part No.	Dimensions(in/mm)	
		A	B
2	FWF25401-S02S22W5B	.100(2.54)	.200(5.08)
3	FWF25401-S03S22W5B	.200(5.08)	.300(7.62)
4	FWF25401-S04S22W5B	.300(7.62)	.400(10.16)
5	FWF25401-S05S22W5B	.400(10.16)	.500(12.70)
6	FWF25401-S06S22W5B	.500(12.70)	.600(15.24)
7	FWF25401-S07S22W5B	.600(15.24)	.700(17.78)
8	FWF25401-S08S22W5B	.700(17.78)	.800(20.32)
9	FWF25401-S09S22W5B	.800(20.32)	.900(22.86)
10	FWF25401-S10S22W5B	.900(22.86)	1.000(25.40)
11	FWF25401-S11S22W5B	1.000(25.40)	1.100(27.94)
12	FWF25401-S12S22W5B	1.100(27.94)	1.200(30.48)

 THIRD ANGLE PROJECTION	DESIGN UNITS	X.±.012(0.30)	CHECKED BY	FRANK	DATE	8/JUL/13	APPROVE BY	FRANK	DATE	8/JUL/13	PART NO. FWF25401-SXXS22W5B ITEM NO. FWF25401	<b>TXGA</b> Leader Of Industry	THIS DRAWING CONTAINS INFORMATION THAT IS PROPRIETARY TO TXGA INDUSTRIAL ELECTRONICS(SZ)CO.,LTD AND SHOULD NOT BE USED WITHOUT WRITTEN PERMISSION
	SCALE	5:1	DRAWN BY	JACOB	DATE	8/JUL/13	DATE	8/JUL/13					
SIZE	A4	GENERAL TOLERANCES	(UNLESS SPECIFIED)										



## X-ON Electronics

Largest Supplier of Electrical and Electronic Components

*Click to view similar products for [Headers & Wire Housings](#) category:*

*Click to view products by [TXGA](#) manufacturer:*

Other Similar products are found below :

[95000-104TRLF](#) [10135584-644402LF](#) [DF62W-EP2022PCA](#) [95000-106TRLF](#) [DF62W-2022SCA](#) [DF62W-EP2022PC](#) [2203348](#) [DF62W-2022SC](#) [1084018](#) [1029039](#) [1084017](#) [802-10-012-10-002000](#) [1112640](#) [1112639](#) [891-007-9SS-BST1T](#) [000-34000](#) [0008550134](#) [0009482033](#) [0009507031](#) [57102-F02-18ULF](#) [57102-S06-03LF](#) [57202-S52-04LF](#) [PCN6-15S-2.5E](#) [0039019024](#) [58102-G61-06LF](#) [582553-1](#) [0009485154](#) [0009508121](#) [0022285053](#) [0050291907](#) [018731A](#) [LY20-4P-DT1-P1E-BR](#) [02.125.8002.8](#) [60101931](#) [60598-1 \(Cut Strip\)](#) [M1625-3R/100](#) [61062-3](#) [61082-181009](#) [CSU011177004](#) [636-1427](#) [638009-1](#) [641938-9](#) [641991-4](#) [644168-1](#) [644827-2](#) [647662-1](#) [65039-019ELF](#) [65692-001LF](#) [65781-018](#) [65781-047](#)