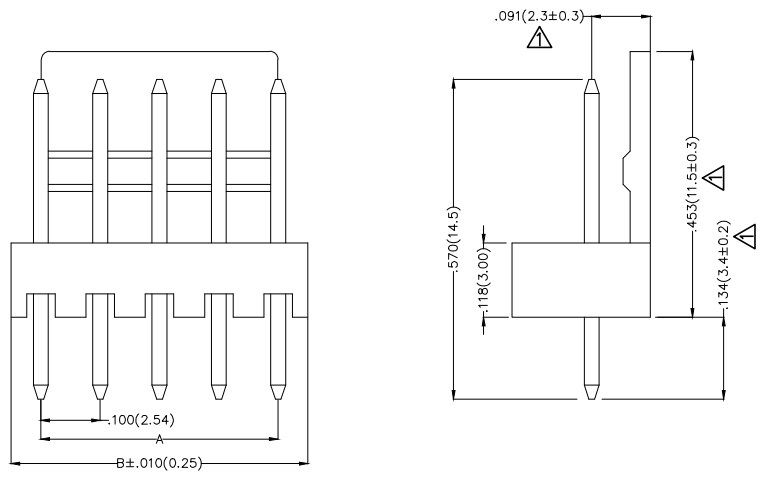
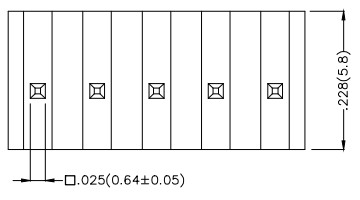


REV	LOCATIONS	DESCRIPTION	DATE	REVISER	APPD
1	△	Size changes	26/APR/21	KATE	JOHNNY



Electrical  
 Current Rating: 2.5A AC(rms)/DC  
 Voltage Rating: 250V AC(rms)/DC  
 Contact Resistance: 20 mΩ Max  
 Insulation Resistance: 1000 MΩ MIN  
 Withstanding Voltage: 1000V AC r.m.s  
 Temperature Range—Operating: -25°C ~+85°C

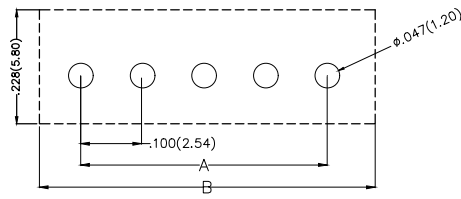
Material and Plating  
 Housing: PA66( UL 94V-2)  
 Contact Pin: Brass  
 Plating: Tin Plated



Ordering Information

FWF 254 01 — S XX S 2 2 W1 B  
 1 2 3 4 5 6 7 8 9 10

1	Category FWF—Wafer	2	Series Number 254—Pitch 2.54mm	3	Distinction No. 01	4	Row Option S—Single Row	5	Circuits XX
6	Entry Angle S—180° Vertical	7	Plating 2—Tin Plated	8	Material—Resin 2—PA66	9	Color—Resin W1—White	10	Packaging B—PE Bag



Recommended P.C. Board Layout

 THIRD ANGLE PROJECTION	GENERAL TOLERANCES (UNLESS SPECIFIED)		APPROVE BY FRANK	DATE 8/JUL/13	PART NO. FWF25401—SXXS22W1B	ITEM NO. FWF25401	 Leader Of Industry	
	DESIGN UNITS Inch (metric)	X.±.012(0.30) X.X±.008(0.20)	X.±5° .X±2°	CHECKED BY JACOB	DATE 8/JUL/13	TITLE Wire to Board (Wafer) Pitch 2.54mm 180° Vertical (DIP)		REV 1
SCALE 5:1	SIZE A4	X.XX±.006(0.15) X.XXX±.004(0.10)	.XX±1° .XXX±0.5°	DRAWN BY CHERRY	DATE 8/JUL/13	THIS DRAWING CONTAINS INFORMATION THAT IS PROPRIETARY TO TXGA INDUSTRIAL ELECTRONICS(S.Z)CO.,LTD AND SHOULD NOT BE USED WITHOUT WRITTEN PERMISSION		

1 2 3 4 5 6 7 8

REV	LOCATIONS	DESCRIPTION	DATE	REVISER	APPD

A

F

B

E

C

C

D

D

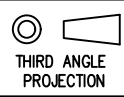

E

E

F

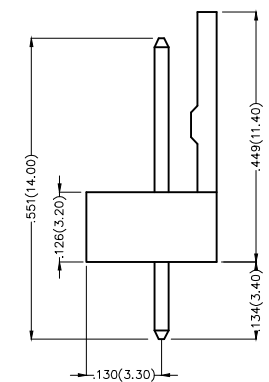
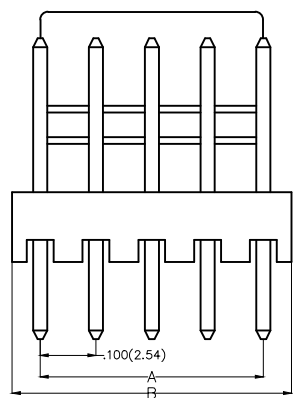
F

Circuits (n)	Part No.	Dimensions(in/mm)	
		A	B
2	FWF25401-S02S22W1B	.100(2.54)	.200(5.08)
3	FWF25401-S03S22W1B	.200(5.08)	.300(7.62)
4	FWF25401-S04S22W1B	.300(7.62)	.400(10.16)
5	FWF25401-S05S22W1B	.400(10.16)	.500(12.70)
6	FWF25401-S06S22W1B	.500(12.70)	.600(15.24)
7	FWF25401-S07S22W1B	.600(15.24)	.700(17.78)
8	FWF25401-S08S22W1B	.700(17.78)	.800(20.32)
9	FWF25401-S09S22W1B	.800(20.32)	.900(22.86)
10	FWF25401-S10S22W1B	.900(22.86)	1.000(25.40)
11	FWF25401-S11S22W1B	1.000(25.40)	1.100(27.94)
12	FWF25401-S12S22W1B	1.100(27.94)	1.200(30.48)
13	FWF25401-S13S22W1B	1.200(30.48)	1.300(33.02)
14	FWF25401-S14S22W1B	1.300(33.02)	1.400(35.56)
15	FWF25401-S15S22W1B	1.400(35.56)	1.500(38.10)
16	FWF25401-S16S22W1B	1.500(38.10)	1.600(40.64)

 THIRD ANGLE PROJECTION	GENERAL TOLERANCES (UNLESS SPECIFIED)		APPROVE BY FRANK	DATE 8/JUL/13	PART NO. FWF25401-SXXS22W1B	ITEM NO. FWF25401	 Leader Of Industry	
	X.±.012(0.30)	X.±5°	CHECKED BY JACOB	DATE 8/JUL/13	TITLE Wire to Board (Wafer) Pitch 2.54mm 180° Vertical (DIP)			REV 1
	DESIGN UNITS Inch (metric)	X.X±.008(0.20)	.X±2°	DRAWN BY CHERRY	DATE 8/JUL/13	THIS DRAWING CONTAINS INFORMATION THAT IS PROPRIETARY TO TXGA INDUSTRIAL ELECTRONICS(S.Z)CO.,LTD AND SHOULD NOT BE USED WITHOUT WRITTEN PERMISSION		
SCALE 5:1	SIZE A4	X.XX±.006(0.15)	.XX±1°					
		X.XXX±.004(0.10)	.XXX±0.5°					

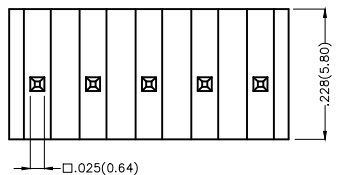
1 2 3 4 5 6 7 8

REV	LOCATIONS	DESCRIPTION	DATE	REVISER	APPD



**Electrical**  
 Current Rating: 2.5A AC(rms)/DC  
 Voltage Rating: 250V AC(rms)/DC  
 Contact Resistance: 20 mΩ Max  
 Insulation Resistance: 1000 MΩ MIN  
 Withstanding Voltage: 1000V AC r.m.s  
 Temperature Range—Operating: -25°C ~ +85°C

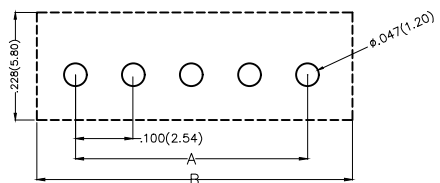
**Material and Plating**  
 Housing: PA66( UL 94V-2)  
 Contact Pin: Brass  
 Plating: Tin Plated



**Ordering Information**

FWF 254 01 — S XX S 2 2 W5 B  
 1 2 3 4 5 6 7 8 9 10

1	Category FWF—Wafer	2	Series Number 254—Pitch 2.54mm	3	Distinction No. 01	4	Row Option Single Row	5	Circuits XX	6	Entry Angle S-180° Vertical
7	Plating 2—Tin Plated	8	Material—Resin 2—PA66	9	Color—Resin W5—Natural	10	Packaging B—PE Bag				





Recommended P.C.Board Layout

 THIRD ANGLE PROJECTION	GENERAL TOLERANCES (UNLESS SPECIFIED)		APPROVE BY FRANK	DATE 8/JUL/13	PART NO. FWF25401—SXXS22W5B	ITEM NO. FWF25401	 Leader Of Industry	
	DESIGN UNITS Inch (metric)	X.X±.012(0.30) X.X±.008(0.20)	X.±5° .X±2°	CHECKED BY JACOB	DATE 8/JUL/13	TITLE Wire to Board (Wafer) Pitch 2.54mm 180° Vertical (DIP)		REV 0
SCALE 5:1	SIZE A4	X.XX±.006(0.15) X.XXX±.004(0.10)	.XX±1° .XXX±0.5°	DRAWN BY CHERRY	DATE 8/JUL/13	THIS DRAWING CONTAINS INFORMATION THAT IS PROPRIETARY TO TXGA INDUSTRIAL ELECTRONICS(S.Z.)CO.,LTD AND SHOULD NOT BE USED WITHOUT WRITTEN PERMISSION		

REV	LOCATIONS	DESCRIPTION	DATE	REVISER	APPD

Circuits (n)	Part No.	Dimensions(in/mm)	
		A	B
2	FWF25401-S02S22W5B	.100(2.54)	.200(5.08)
3	FWF25401-S03S22W5B	.200(5.08)	.300(7.62)
4	FWF25401-S04S22W5B	.300(7.62)	.400(10.16)
5	FWF25401-S05S22W5B	.400(10.16)	.500(12.70)
6	FWF25401-S06S22W5B	.500(12.70)	.600(15.24)
7	FWF25401-S07S22W5B	.600(15.24)	.700(17.78)
8	FWF25401-S08S22W5B	.700(17.78)	.800(20.32)
9	FWF25401-S09S22W5B	.800(20.32)	.900(22.86)
10	FWF25401-S10S22W5B	.900(22.86)	1.000(25.40)
11	FWF25401-S11S22W5B	1.000(25.40)	1.100(27.94)
12	FWF25401-S12S22W5B	1.100(27.94)	1.200(30.48)

 THIRD ANGLE PROJECTION	GENERAL TOLERANCES (UNLESS SPECIFIED)		APPROVE BY	DATE	PART NO.	ITEM NO.	 Leader Of Industry
	X.±.012(0.30)	X.±5'	FRANK	8/JUL/13	FWF25401-SXXS22W5B	FWF25401	
DESIGN UNITS Inch (metric)	X.XX±.008(0.20)	.X'±2"	CHECKED BY	DATE	TITLE		REV 0
SCALE	X.XX±.006(0.15)	.XX'±1"	JACOB	8/JUL/13	Wire to Board (Wafer) Pitch 2.54mm 180° Vertical (DIP)		
5:1	X.XXX±.004(0.10)	.XXX'±0.5'	DRAWN BY	DATE	THIS DRAWING CONTAINS INFORMATION THAT IS PROPRIETARY TO TXGA INDUSTRIAL ELECTRONICS(S.Z)CO.,LTD AND SHOULD NOT BE USED WITHOUT WRITTEN PERMISSION		SHEET NO.2/2
SIZE			CHERRY	8/JUL/13			

## X-ON Electronics

Largest Supplier of Electrical and Electronic Components

*Click to view similar products for [Headers & Wire Housings](#) category:*

*Click to view products by [TXGA](#) manufacturer:*

Other Similar products are found below :

[57102-F02-18ULF](#) [58102-G61-06LF](#) [582553-1](#) [009176003701906](#) [01.001.5753.1](#) [0050291907](#) [02.125.8002.8](#) [609-3404](#) [61062-3](#)  
[CSU011177004](#) [622-0430](#) [622-3653LF](#) [63453-116](#) [636-1030](#) [636-1427](#) [636-3427](#) [636-4007](#) [641938-9](#) [644827-2](#) [65495-038](#) [65692-001LF](#)  
[65781-018](#) [65781-047](#) [65817-010LF](#) [65817-015LF](#) [66207-023LF](#) [67095-007LF](#) [67601157](#) [68631-112](#) [68645-018](#) [699319-000](#)  
[M90C108951C](#) [70.362.1628.0](#) [70-4210](#) [70-4226B](#) [70-4853B](#) [707-5028](#) [71.350.2428.0](#) [71961-016LF](#) [733-134](#) [733-162](#) [754199-000](#) [760-](#)  
[3052](#) [80.063.4001.1](#) [800-90-001-10-001000](#) [800-90-010-10-002000](#) [801-43-002-10-013000](#) [801-43-006-10-002000](#) [803-41-018-10-001000](#)  
[803-43-024-10-001000](#)