

REV	LOCATIONS	DESCRIPTION	DATE	REVISER	APPD
1	▽	Dimension: Change 6.80±0.25 into 6.70±0.30mm	05/JUN/17	KATE	CHERRY

Electrical  
 Current Rating: 2.5A AC(rms)/DC  
 Voltage Rating: 250V AC(rms)/DC  
 Contact Resistance: 20 mΩ Max  
 Insulation Resistance: 1000 MΩ MIN  
 Withstanding Voltage: 800V AC r.m.s  
 Temperature Range-Operating: -25°C~+85°C  
 Material and Plating  
 Housing: PBT UL94V-0  
 Pin: Brass  
 Plating: Gold plated

Circuits (n)	Part No.	Dimensions(in/mm)	
		A	B
2	FWF25404-S02S12K6B	.100(2.54)	.299(7.59)
3	FWF25404-S03S12K6B	.200(5.08)	.399(10.13)
4	FWF25404-S04S12K6B	.300(7.62)	.499(12.67)
5	FWF25404-S05S12K6B	.400(10.16)	.599(15.21)
6	FWF25404-S06S12K6B	.500(12.70)	.699(17.75)
7	FWF25404-S07S12K6B	.600(15.24)	.799(20.29)
8	FWF25404-S08S12K6B	.700(17.78)	.899(22.83)
9	FWF25404-S09S12K6B	.800(20.32)	.999(25.37)
10	FWF25404-S10S12K6B	.900(22.86)	1.099(27.91)
11	FWF25404-S11S12K6B	1.000(25.40)	1.199(30.45)
12	FWF25404-S12S12K6B	1.100(27.94)	1.299(32.99)

### Ordering Information

FWF 254 04 - S XX S 1 2 K6 B  
 1 2 3 4 5 6 7 8 9 10

- Category
- Series Number
- Distinction No.
- Row Option
- Circuits
- Color-Resin
- Material-Resin
- Finish
- Entry Angle
- Row Option
- Color-Resin
- Packaging

10 B-PE Bag  
 9 K6-Black  
 8 2-PBT  
 7 1-Gold plated  
 6 S-180° Vertical

ITEM NO. FWF25404  
 PART NO. FWF25404-SXXS12K6B  
 TITLE Wire to Board (Water) Pitch 2.54mm 180° Vertical (DIP)

REV 1 SHEET NO. 1/1

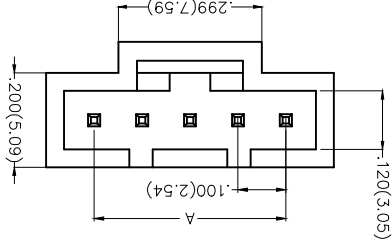
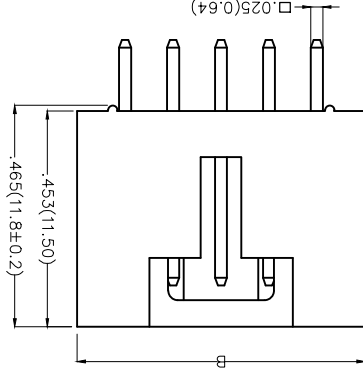
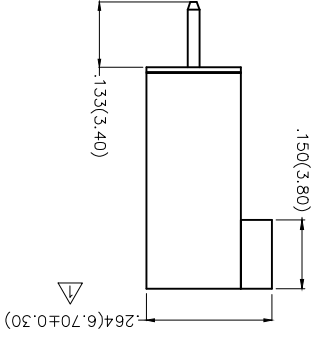
APPROVE BY FRANK DATE 8/JUL/13 GENERAL TOLERANCES (UNLESS SPECIFIED)  
 CHECKED BY JACOB DATE 8/JUL/13 THIRD ANGLE PROJECTION  
 DRAWN BY CHERRY DATE 8/JUL/13 DESIGN UNITS Inch (metric)  
 SCALE SIZE A4 5:1 X.XX±.006(0.15) X.XX±.008(0.20) X.XX±.004(0.10)

THIS DRAWING CONTAINS INFORMATION THAT IS PROPRIETARY TO TXGA INDUSTRIAL ELECTRONICS(S)Z.CO.,LTD AND SHOULD NOT BE USED WITHOUT WRITTEN PERMISSION

Leader Of Industry  
**TXGA**

8 7 6 5 4 3 2 1

Recommended P.C.Board Layout



## X-ON Electronics

Largest Supplier of Electrical and Electronic Components

*Click to view similar products for [Headers & Wire Housings](#) category:*

*Click to view products by [TXGA](#) manufacturer:*

Other Similar products are found below :

[95000-104TRLF](#) [10135584-644402LF](#) [DF62W-EP2022PCA](#) [95000-106TRLF](#) [DF62W-2022SCA](#) [DF62W-EP2022PC](#) [2203348](#) [DF62W-2022SC](#) [1084018](#) [1029039](#) [1084017](#) [802-10-012-10-002000](#) [1112640](#) [1112639](#) [891-007-9SS-BST1T](#) [000-34000](#) [0008550134](#) [0009482033](#) [0009507031](#) [57102-F02-18ULF](#) [57102-S06-03LF](#) [57202-S52-04LF](#) [PCN6-15S-2.5E](#) [0039019024](#) [58102-G61-06LF](#) [582553-1](#) [0009485154](#) [0009508121](#) [0022285053](#) [0050291907](#) [018731A](#) [LY20-4P-DT1-P1E-BR](#) [02.125.8002.8](#) [60101931](#) [60598-1 \(Cut Strip\)](#) [M1625-3R/100](#) [61062-3](#) [61082-181009](#) [CSU011177004](#) [636-1427](#) [638009-1](#) [641938-9](#) [641991-4](#) [644168-1](#) [644827-2](#) [647662-1](#) [65039-019ELF](#) [65692-001LF](#) [65781-018](#) [65781-047](#)