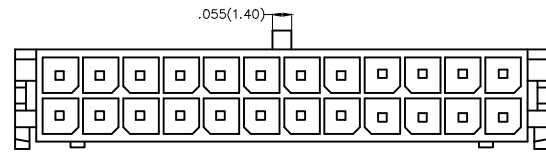


1 2 3 4 5 6 7 8

| REV | LOCATIONS | DESCRIPTION | DATE | REVISER | APPD |
|-----|-----------|-------------|------|---------|------|
| | | | | | |

A

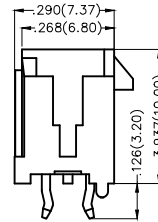
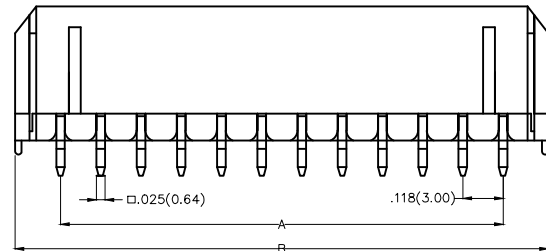


B

Electrical
 Current Rating: 5.0A AC(rms)/DC
 Voltage Rating: 250V AC(rms)/DC
 Contact Resistance: 10 mΩ Max
 Insulation Resistance: 1000 MΩ MIN
 Withstanding Voltage: 1500V AC r.m.s
 Temperature Range—Operating: -25°C~+85°C

Material and Plating
 Housing: PA66(UL 94V-0)
 Contact Pin: Brass
 Plating: Tin Plated

C

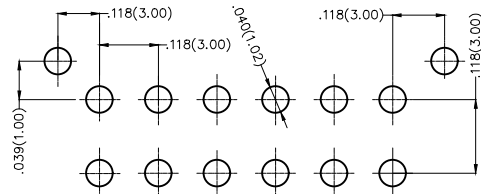


D

Ordering Information

FWF 300 01 — D XX S 2 2 K6 B
 1 2 3 4 5 6 7 8 9 10

E



Recommended P.C.Board Layout

| | | | | | | | | | | | |
|---|-------------------------|---|---------------------------------|---|-------------------------|----|--------------------------|---|----------------|---|--------------------------------|
| 1 | Category FWF—Wafer | 2 | Series Number 300—Pitch3.0mm | 3 | Distinction No. 01 | 4 | Row Option Double Row | 5 | Circuits XX | 6 | Entry Angle S—180° Vertical |
| 7 | Plating 2—Tin Plated | 8 | Material—Resin 2—PA66 | 9 | Color—Resin K6—Black | 10 | Packaging B—PE Bag | | | | |

F

| | | | | | | | | |
|-------------------------------|--|-------------------------------------|-----------------------|----------------------|--------------------------------|--|------------------------|-------|
| THIRD ANGLE PROJECTION | GENERAL TOLERANCES (UNLESS SPECIFIED) | | APPROVE BY FRANK | DATE 01/JUL/13 | PART NO. FWF30001—DXXS22K6B | ITEM NO. FW30001 | Leader Of Industry | |
| | DESIGN UNITS Inch (metric) | X.±.012(0.30) X.X±.008(0.20) | X.'±5' .X'±2' | CHECKED BY CHERRY | DATE 01/JUL/13 | TITLE Wire to Board (Wafer) Pitch 3.0mm 180° Vertical (DIP) | | REV 0 |
| SCALE 5:1 | SIZE A4 | X.XX±.006(0.15) X.XXX±.004(0.10) | .XX'±1' .XXX'±0.5' | DRAWN BY JACOB | DATE 01/JUL/13 | THIS DRAWING CONTAINS INFORMATION THAT IS PROPRIETARY TO TXGA INDUSTRIAL ELECTRONICS(S.Z)CO.,LTD AND SHOULD NOT BE USED WITHOUT WRITTEN PERMISSION | | |

1 2 3 4 5 6 7 8

1 2 3 4 5 6 7 8

| REV | LOCATIONS | DESCRIPTION | DATE | REVISER | APPD |
|-----|-----------|-------------|------|---------|------|
| | | | | | |

A

A

B

B

C

C

D

D

E



E

F

F

Material and Plating : Housing PA66 UL94V-0 , Tin Plated.

| Circuits (n) | Part No. | Dimensions(in/mm) | |
|-----------------|--------------------|-------------------|--------------|
| | | A | B |
| 2 | FWF30001-D02S22K6B | — | .264(6.70) |
| 4 | FWF30001-D04S22K6B | .118(3.00) | .382(9.70) |
| 6 | FWF30001-D06S22K6B | .236(6.00) | .500(12.70) |
| 8 | FWF30001-D08S22K6B | .354(9.00) | .618(15.70) |
| 10 | FWF30001-D10S22K6B | .472(12.00) | .736(18.70) |
| 12 | FWF30001-D12S22K6B | .591(15.00) | .854(21.70) |
| 14 | FWF30001-D14S22K6B | .709(18.00) | .969(24.60) |
| 16 | FWF30001-D16S22K6B | .827(21.00) | 1.091(27.70) |
| 18 | FWF30001-D18S22K6B | .945(24.00) | 1.209(30.70) |
| 20 | FWF30001-D20S22K6B | 1.063(27.00) | 1.327(33.70) |
| 22 | FWF30001-D22S22K6B | 1.181(30.00) | 1.445(36.70) |
| 24 | FWF30001-D24S22K6B | 1.299(33.00) | 1.563(39.70) |

| | | | | | | | | |
|---|--|--|---|----------------------|---|---|---|-------|
|  THIRD ANGLE PROJECTION | GENERAL TOLERANCES (UNLESS SPECIFIED) | | APPROVE BY FRANK | DATE 01/JUL/13 | PART NO. FWF30001-DXXS22K6B | ITEM NO. FW30001 |  Leader Of Industry | |
| | DESIGN UNITS Inch (metric) | X.±.012(0.30) X.X±.008(0.20) X.XX±.006(0.15) X.XXX±.004(0.10) | X.'±5' .X'±2' .XX'±1' .XXX'±0.5' | CHECKED BY CHERRY | DATE 01/JUL/13 | TITLE Wire to Board (Wafer) Pitch 3.0mm 180° Vertical (DIP) | | REV 0 |
| | SCALE 5:1 | SIZE A4 | DRAWN BY JACOB | DATE 01/JUL/13 | THIS DRAWING CONTAINS INFORMATION THAT IS PROPRIETARY TO TXGA INDUSTRIAL ELECTRONICS(S.Z)CO.,LTD AND SHOULD NOT BE USED WITHOUT WRITTEN PERMISSION | | | |

1 2 3 4 5 6 7 8

X-ON Electronics

Largest Supplier of Electrical and Electronic Components

Click to view similar products for [Headers & Wire Housings](#) category:

Click to view products by [TXGA](#) manufacturer:

Other Similar products are found below :

[0015917161](#) [0022155065](#) [57102-F02-18ULF](#) [58102-G61-06LF](#) [582553-1](#) [01.001.5753.1](#) [0050291907](#) [02.125.8002.8](#) [609-3404](#) [61062-3](#)
[CSU011177004](#) [622-0430](#) [622-3653LF](#) [63453-116](#) [636-1030](#) [636-1427](#) [636-3427](#) [636-4007](#) [641938-9](#) [65495-038](#) [65692-001LF](#) [65781-018](#)
[65781-047](#) [65817-010LF](#) [65817-015LF](#) [67095-007LF](#) [67601157](#) [68631-112](#) [68645-018](#) [699319-000](#) [70.362.1628.0](#) [70-4210](#) [70-4226B](#) [70-](#)
[4853B](#) [71.350.2428.0](#) [733-134](#) [733-162](#) [760-3052](#) [MHR-64-VUAL](#) [80.063.4001.1](#) [800-90-001-10-001000](#) [801-43-002-10-013000](#)
[801-43-006-10-002000](#) [803-43-024-10-001000](#) [803-93-012-10-001000](#) [8-1437020-4](#) [819-22-004-30-001101](#) [820-22-006-30-001101](#)
[820-22-008-30-001101](#) [821-22-002-10-001101](#)