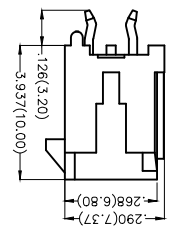
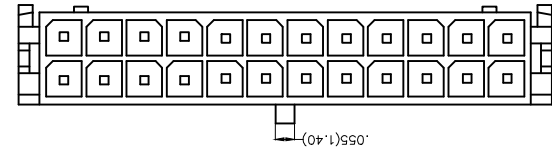
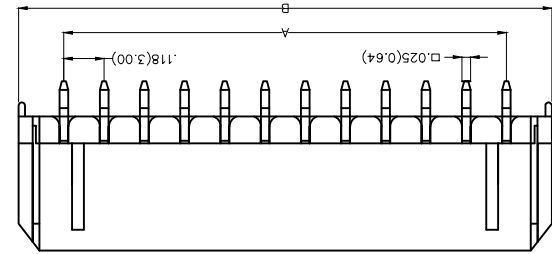
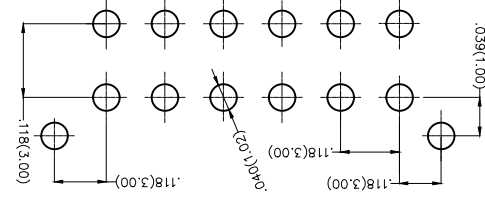


Recommended P.C.Board Layout



Electrical
 Current Rating: 5.0A AC(rms)/DC
 Voltage Rating: 250V AC(rms)/DC
 Contact Resistance: 10 mΩ Max
 Insulation Resistance: 1000 MΩ MIN
 Withstanding Voltage: 1500V AC r.m.s
 Temperature Range—Operating: -25°C~+85°C
 Material and Plating
 Housing: PA66 (UL 94V-0)
 Contact Pin: Brass
 Plating: Tin Plated

Ordering Information

| | | | | | | | | | |
|---|---------|----|-----|------|---|---|---|---|----|
| 1 | FWF 300 | 01 | - D | XX S | 6 | 2 | 8 | 9 | 10 |
| 2 | FWF 300 | 01 | - D | XX S | 6 | 2 | 8 | 9 | 10 |


| | | |
|----|-----------------|-----------------|
| 1 | Category | FWF-Water |
| 2 | Series Number | 300-Pitch3.0mm |
| 3 | Distinction No. | 01 |
| 4 | Row Option | Double Row |
| 5 | Circuits | XX |
| 6 | Entry Angle | S-180° Vertical |
| 7 | Plating | 2-Tin Plated |
| 8 | Material-Resin | 2-PA66 |
| 9 | Color-Resin | K6-Black |
| 10 | Packaging | B-PE Bag |

| | | | |
|---------------------------------------|---------------|--|---|
| THIRD ANGLE PROJECTION | DESIGN UNITS | Inch (metric) | |
| | SCALE | SIZE | 5:1 A4 |
| GENERAL TOLERANCES (UNLESS SPECIFIED) | APPROVE BY | FRANK | DATE |
| | CHECKED BY | CHERRY | DATE |
| DATE | 01/JUL/13 | PART NO. | FWF30001-DXXS22K6B |
| ITEM NO. | FW30001 | TITLE | Wire to Board (Water) Pitch 3.0mm 180° Vertical (DIP) |
| REV 0 | SHEET NO. 1/1 | THIS DRAWING CONTAINS INFORMATION THAT IS PROPRIETARY TO TXGA INDUSTRIAL ELECTRONICS(Z)CO.,LTD AND SHOULD NOT BE USED WITHOUT WRITTEN PERMISSION | |

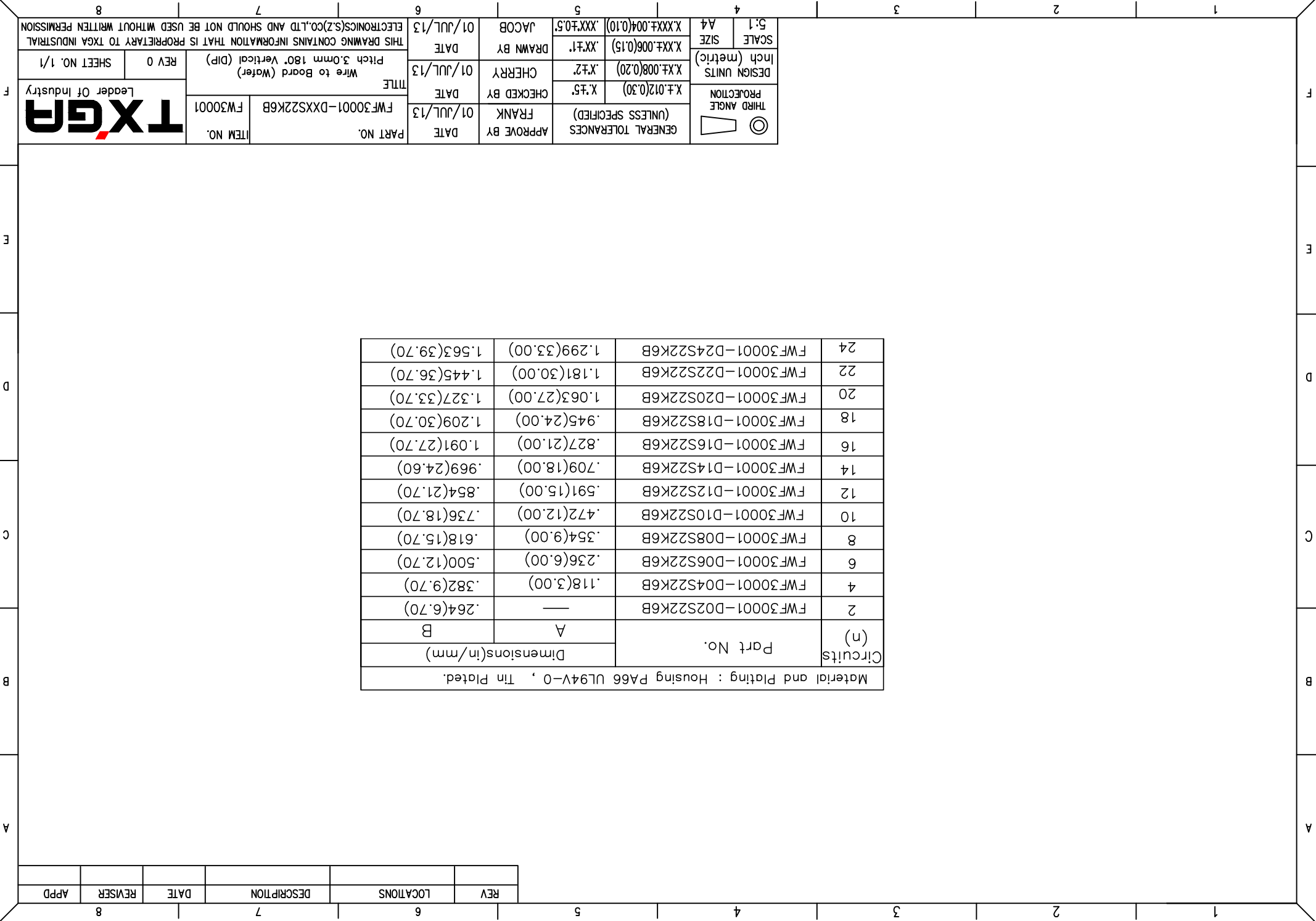


| | | | | | |
|-----|-----------|-------------|------|---------|------|
| REV | LOCATIONS | DESCRIPTION | DATE | REVISER | APPD |
| | | | | | |

| Circuits (n) | Part No. | Dimensions(in/mm) | |
|---|--------------------|-------------------|--------------|
| | | A | B |
| Material and Plating : Housing PA66 UL94V-0 , Tin Plated. | | | |
| 2 | FWF30001-D02S22K6B | — | .264(6.70) |
| 4 | FWF30001-D04S22K6B | .118(3.00) | .382(9.70) |
| 6 | FWF30001-D06S22K6B | .236(6.00) | .500(12.70) |
| 8 | FWF30001-D08S22K6B | .354(9.00) | .618(15.70) |
| 10 | FWF30001-D10S22K6B | .472(12.00) | .736(18.70) |
| 12 | FWF30001-D12S22K6B | .591(15.00) | .854(21.70) |
| 14 | FWF30001-D14S22K6B | .709(18.00) | .969(24.60) |
| 16 | FWF30001-D16S22K6B | .827(21.00) | 1.091(27.70) |
| 18 | FWF30001-D18S22K6B | .945(24.00) | 1.209(30.70) |
| 20 | FWF30001-D20S22K6B | 1.063(27.00) | 1.327(33.70) |
| 22 | FWF30001-D22S22K6B | 1.181(30.00) | 1.445(36.70) |
| 24 | FWF30001-D24S22K6B | 1.299(33.00) | 1.563(39.70) |

| | | | | | | | |
|---|-------------------------------|-----------------|---------|---------------------|-------------------|--|---------------------|
| THIRD ANGLE PROJECTION  | DESIGN UNITS Inch (metric) | X.±.012(0.30) | X.±.5 | CHECKED BY FRANK | DATE 01/JUL/13 | PART NO. FWF30001-DXXS22K6B | ITEM NO. FW30001 |
| | SCALE SIZE 5:1 A4 | X.XX±.008(0.20) | X.±.2 | CHEERYY | 01/JUL/13 | TITLE Wire to Board (Water) Pitch 3.0mm 180° Vertical (DIP) | REV 0 |
| GENERAL TOLERANCES (UNLESS SPECIFIED) | | X.±.006(0.15) | .XX±.1 | DRAWN BY JACOB | 01/JUL/13 | THIS DRAWING CONTAINS INFORMATION THAT IS PROPRIETARY TO TXGA INDUSTRIAL ELECTRONICS(Z)CO.,LTD AND SHOULD NOT BE USED WITHOUT WRITTEN PERMISSION | |
| | | X.XX±.004(0.10) | .XX±0.5 | | | SHEET NO. 1/1 | |

| | | | | | |
|-----|-----------|-------------|------|---------|------|
| REV | LOCATIONS | DESCRIPTION | DATE | REVISER | APPD |
| | | | | | |



X-ON Electronics

Largest Supplier of Electrical and Electronic Components

Click to view similar products for [Headers & Wire Housings](#) category:

Click to view products by [TXGA](#) manufacturer:

Other Similar products are found below :

[95000-104TRLF](#) [10135584-644402LF](#) [DF62W-EP2022PCA](#) [95000-106TRLF](#) [DF62W-2022SCA](#) [DF62W-EP2022PC](#) [2203348](#) [DF62W-2022SC](#) [1084018](#) [1029039](#) [1084017](#) [802-10-012-10-002000](#) [1112640](#) [1112639](#) [891-007-9SS-BST1T](#) [000-34000](#) [0008550134](#) [0009482033](#) [0009507031](#) [57102-F02-18ULF](#) [57102-S06-03LF](#) [57202-S52-04LF](#) [PCN6-15S-2.5E](#) [0039019024](#) [58102-G61-06LF](#) [582553-1](#) [0009485154](#) [0009508121](#) [0022285053](#) [0050291907](#) [018731A](#) [LY20-4P-DT1-P1E-BR](#) [02.125.8002.8](#) [60101931](#) [60598-1 \(Cut Strip\)](#) [M1625-3R/100](#) [61062-3](#) [61082-181009](#) [CSU011177004](#) [636-1427](#) [638009-1](#) [641938-9](#) [641991-4](#) [644168-1](#) [644827-2](#) [647662-1](#) [65039-019ELF](#) [65692-001LF](#) [65781-018](#) [65781-047](#)