

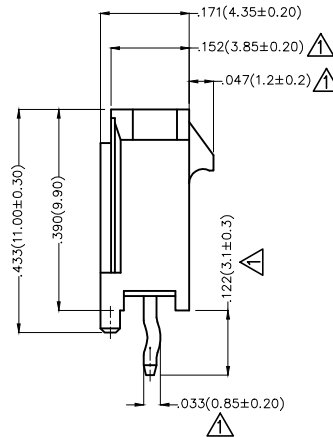
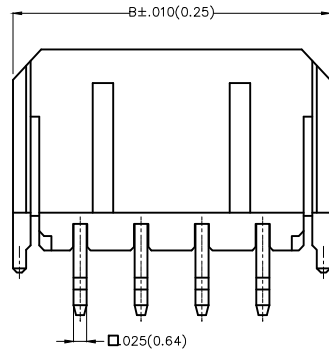
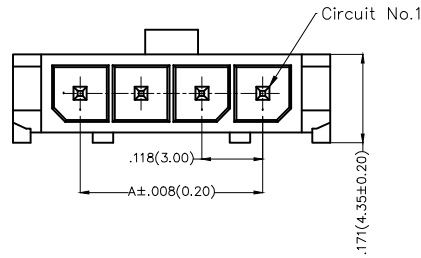
REV	LOCATIONS	DESCRIPTION	DATE	REVISER	APPD
1	△	Dimensions change	18/MAR/20	KATE	CHERRY

Electrical

Current Rating: 5.0A AC(rms)/DC
Voltage Rating: 250V AC(rms)/DC
Contact Resistance: 10 m Ω Max
Insulation Resistance: 1000 M Ω MIN
Withstanding Voltage: 1500V AC r.m.s
Temperature Range—Operating: -25°C~+85°C

Material and Plating

Housing: PA66(UL 94V-0)
Contact Pin: Brass
Plating: Tin Plated

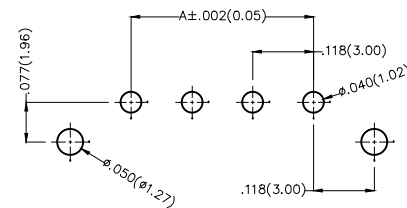


Circuits (n)	Part No.	Dimensions(in/mm)	
		A	B
2	FWF30004-S02S22K6B	.118(3.00)	.380(9.65)
3	FWF30004-S03S22K6B	.236(6.00)	.498(12.65)
4	FWF30004-S04S22K6B	.354(9.00)	.616(15.65)
5	FWF30004-S05S22K6B	.472(12.00)	.734(18.65)
6	FWF30004-S06S22K6B	.591(15.00)	.852(21.65)
7	FWF30004-S07S22K6B	.709(18.00)	.967(24.65)
8	FWF30004-S08S22K6B	.827(21.00)	1.089(27.65)
9	FWF30004-S09S22K6B	.945(24.00)	1.207(30.65)
10	FWF30004-S10S22K6B	1.063(27.00)	1.325(33.65)
11	FWF30004-S11S22K6B	1.181(30.00)	1.443(36.65)
12	FWF30004-S12S22K6B	1.299(33.00)	1.561(39.65)

Ordering Information

FWF 300 04 - S XX S 2 2 K6 B
1 2 3 4 5 6 7 8 9 10

1 Category FWF—Wafer	2 Series Number 300—Pitch 3.0mm	3 Distinction No. 04	4 Row Option S—Single Row	5 Circuits XX	6 Entry Angle S—180° Vertical
7 Plating 2—Tin Plated	8 Material—Resin 2—PA66	9 Color—Resin K6—Black	10 Packaging B—PE Bag		



Recommended P.C.Board Layout
General tolerances: ±.002(0.05)

THIRD ANGLE PROJECTION		GENERAL TOLERANCES (UNLESS SPECIFIED)		APPROVE BY	DATE	PART NO.	ITEM NO.	TXGA Leader Of Industry
DESIGN UNITS Inch (metric)	SCALE	SIZE	X.±.012(0.30)	FRANK	01/JUL/13	FWF30004-SXXS22K6B	FWF30004	
	5:1	A4	X.X±.008(0.20)	CHECKED BY	DATE	TITLE		
			X.XX±.006(0.15)	CHERRY	01/JUL/13	Wire to Board (Wafer) Pitch 3.0mm 180° Vertical (DIP)		
		X.XXX±.004(0.10)	.XX±1'	DRAWN BY	DATE	THIS DRAWING CONTAINS INFORMATION THAT IS PROPRIETARY TO TXGA INDUSTRIAL ELECTRONICS(S.Z)CO.,LTD AND SHOULD NOT BE USED WITHOUT WRITTEN PERMISSION		
			.XX±0.5'	JACOB	01/JUL/13			

X-ON Electronics

Largest Supplier of Electrical and Electronic Components

Click to view similar products for [Headers & Wire Housings](#) category:

Click to view products by [TXGA](#) manufacturer:

Other Similar products are found below :

[0015917161](#) [0022155065](#) [57102-F02-18ULF](#) [58102-G61-06LF](#) [582553-1](#) [01.001.5753.1](#) [0050291907](#) [02.125.8002.8](#) [609-3404](#) [61062-3](#)
[CSU011177004](#) [622-0430](#) [622-3653LF](#) [63453-116](#) [636-1030](#) [636-1427](#) [636-3427](#) [636-4007](#) [641938-9](#) [65495-038](#) [65692-001LF](#) [65781-018](#)
[65781-047](#) [65817-010LF](#) [65817-015LF](#) [67095-007LF](#) [67601157](#) [68631-112](#) [68645-018](#) [699319-000](#) [70.362.1628.0](#) [70-4210](#) [70-4226B](#) [70-](#)
[4853B](#) [71.350.2428.0](#) [733-134](#) [733-162](#) [760-3052](#) [MHR-64-VUAL](#) [80.063.4001.1](#) [800-90-001-10-001000](#) [801-43-002-10-013000](#)
[801-43-006-10-002000](#) [803-43-024-10-001000](#) [803-93-012-10-001000](#) [8-1437020-4](#) [819-22-004-30-001101](#) [820-22-006-30-001101](#)
[820-22-008-30-001101](#) [821-22-002-10-001101](#)