

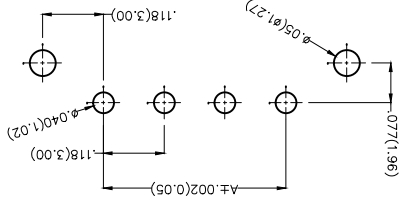
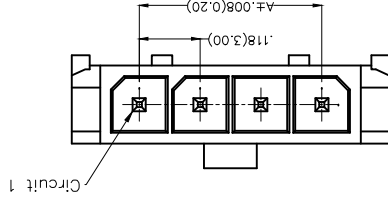
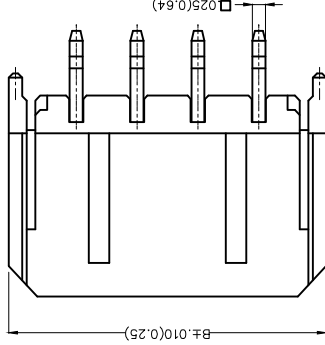
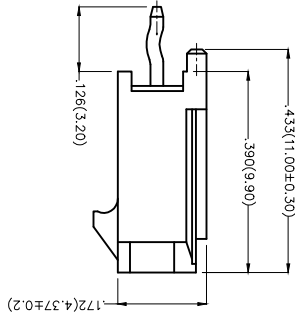
REV	LOCATIONS	DESCRIPTION	DATE	REVISER	APPD

Electrical
 Current Rating: 5.0A AC(rms)/DC
 Voltage Rating: 250V AC(rms)/DC
 Contact Resistance: 10 mΩ Max
 Insulation Resistance: 1000 MΩ MIN
 Withstanding Voltage: 1500V AC r.m.s
 Temperature Range—Operating: -25°C~+85°C
 Material and Plating
 Housing: PA66 (UL 94V-0)
 Contact Pin: Brass
 Plating: Tin Plated

Circuits (n)	Part No.		Dimensions(In/mm)	
	A	B	A	B
2	FWF30004-S02S22K6B	.118(3.00)	.380(9.65)	
3	FWF30004-S03S22K6B	.236(6.00)	.498(12.65)	
4	FWF30004-S04S22K6B	.354(9.00)	.616(15.65)	
5	FWF30004-S05S22K6B	.472(12.00)	.734(18.65)	
6	FWF30004-S06S22K6B	.591(15.00)	.852(21.65)	
7	FWF30004-S07S22K6B	.709(18.00)	.967(24.65)	
8	FWF30004-S08S22K6B	.827(21.00)	1.089(27.65)	
9	FWF30004-S09S22K6B	.945(24.00)	1.207(30.65)	
10	FWF30004-S10S22K6B	1.063(27.00)	1.325(33.65)	
11	FWF30004-S11S22K6B	1.181(30.00)	1.443(36.65)	
12	FWF30004-S12S22K6B	1.299(33.00)	1.561(39.65)	

Ordering Information

FWF 300 04 - S XX S 2 2 K6 B
 1 2 3 4 5 6 7 8 9 10



Recommended P.C.Board Layout

THIRD ANGLE PROJECTION	DESIGN UNITS	X.X±.012(0.30)	X.±.5	DATE	01/JUL/13	FRANK	APPROVE BY	GENERAL TOLERANCES (UNLESS SPECIFIED)
	Inch (metric)	X.X±.008(0.20)	X.±.2	DATE	01/JUL/13	CERRY	CHECKED BY	
SCALE	SIZE	X.XX±.006(0.15)	.XX±.1	DATE	01/JUL/13	JACOB	DRAWN BY	
5:1	A4	X.XX±.004(0.10)	.XX±0.5	ELECTRONICS(Z)CO.,LTD AND SHOULD NOT BE USED WITHOUT WRITTEN PERMISSION				

1	Category	FWF-Wafer	2	Series Number	300-Pitch3.0mm	3	Distinction No.	04	4	Row Option	Single Row	5	Circuits	XX	6	Entry Angle	S-180° Vertical
7	Plating	2-Tin Plated	8	Material-Resin	2-PA66	9	Color-Resin	K6-Black	10	Packaging	B-PE Bag						

DATE	01/JUL/13	FRANK	APPROVE BY
DATE	01/JUL/13	CERRY	CHECKED BY
DATE	01/JUL/13	JACOB	DRAWN BY
THIS DRAWING CONTAINS INFORMATION THAT IS PROPRIETARY TO TXGA INDUSTRIAL ELECTRONICS(Z)CO.,LTD AND SHOULD NOT BE USED WITHOUT WRITTEN PERMISSION			



ITEM NO.	FWF30004
PART NO.	FWF30004-SXXS22K6B
TITLE	Wire to Board (Wafer) Pitch 3.0mm 180° Vertical (DIP)
REV 0	SHEET NO. 1/1

X-ON Electronics

Largest Supplier of Electrical and Electronic Components

Click to view similar products for [Headers & Wire Housings](#) category:

Click to view products by [TXGA](#) manufacturer:

Other Similar products are found below :

[95000-104TRLF](#) [10135584-644402LF](#) [DF62W-EP2022PCA](#) [95000-106TRLF](#) [DF62W-2022SCA](#) [DF62W-EP2022PC](#) [2203348](#) [DF62W-2022SC](#) [1084018](#) [1029039](#) [1084017](#) [802-10-012-10-002000](#) [1112640](#) [1112639](#) [891-007-9SS-BST1T](#) [000-34000](#) [0008550134](#) [0009482033](#) [0009507031](#) [57102-F02-18ULF](#) [57102-S06-03LF](#) [57202-S52-04LF](#) [PCN6-15S-2.5E](#) [0039019024](#) [58102-G61-06LF](#) [582553-1](#) [0009485154](#) [0009508121](#) [0022285053](#) [0050291907](#) [018731A](#) [LY20-4P-DT1-P1E-BR](#) [02.125.8002.8](#) [60101931](#) [60598-1 \(Cut Strip\)](#) [M1625-3R/100](#) [61062-3](#) [61082-181009](#) [CSU011177004](#) [636-1427](#) [638009-1](#) [641938-9](#) [641991-4](#) [644168-1](#) [644827-2](#) [647662-1](#) [65039-019ELF](#) [65692-001LF](#) [65781-018](#) [65781-047](#)