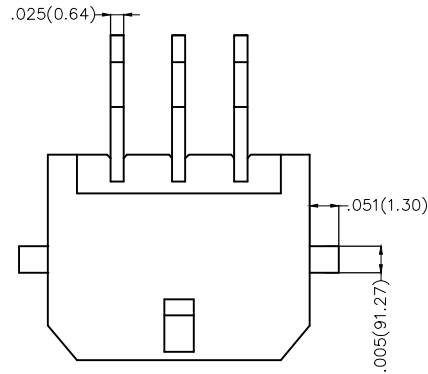
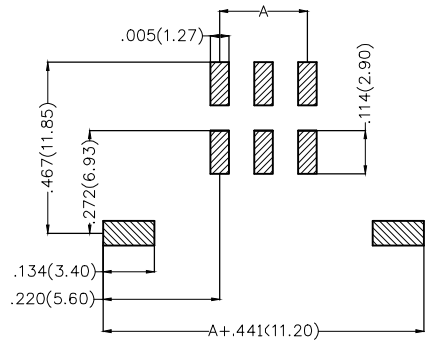
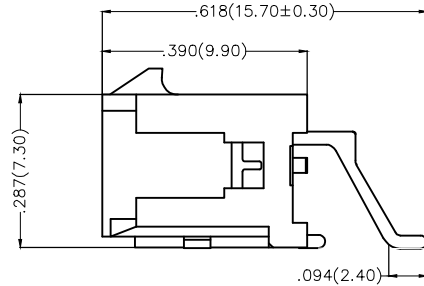
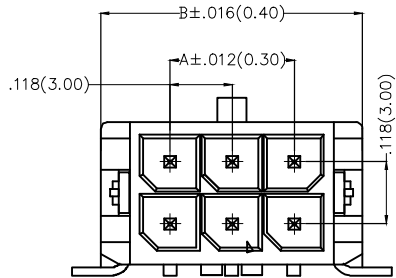


REV	LOCATIONS	DESCRIPTION	DATE	REVISER	APPD



Electrical  
 Current Rating: 5.0A AC(rms)/DC  
 Voltage Rating: 250V AC(rms)/DC  
 Contact Resistance: 10 mΩ Max  
 Insulation Resistance: 1000 MΩ MIN  
 Withstanding Voltage: 1500V AC r.m.s  
 Temperature Range—Operating: -25°C ~ +85°C

Material and Plating  
 Housing: LCP( UL 94V-0)  
 Contact Pin: Brass  
 Plating: Tin Plated



Recommended P.C.Board Layout

### Ordering Information



FWF 300 22 — D XX B 2 3 K6 M  
 1 2 3 4 5 6 7 8 9 10

1   Category FWF—Wafer	2   Series Number 300—Pitch 3.0mm	3   Distinction No. 22	4   Row Option D—Double Row	5   Circuits XX	6   Entry Angle B—90° Angle
7   Plating 2—Tin Plated	8   Material 3—LCP	9   Plastic Colour K6—Black	10   Packaging M—Reel		

 THIRD ANGLE PROJECTION	GENERAL TOLERANCES (UNLESS SPECIFIED)		APPROVE BY FRANK	DATE 18/JUN/13	PART NO. FWF30022-DXXB23K6M	ITEM NO. FWF30022	 Leader Of Industry	
	DESIGN UNITS Inch (metric)	X.±.012(0.30) X.X±.008(0.20) X.XX±.006(0.15) X.XXX±.004(0.10)	X'±5' 'X'±2' 'XX'±1" 'XXX'±0.5"	CHECKED BY CHERRY	DATE 18/JUN/13	TITLE Wire to Board (Wafer) Pitch 3.0mm 90° Angled (SMT)		REV 0
SCALE 5:1	SIZE A4	DRAWN BY KEVIN		DATE 18/JUN/13	THIS DRAWING CONTAINS INFORMATION THAT IS PROPRIETARY TO TXGA INDUSTRIAL ELECTRONICS(S.Z)CO.,LTD AND SHOULD NOT BE USED WITHOUT WRITTEN PERMISSION			

REV	LOCATIONS	DESCRIPTION	DATE	REVISER	APPD

Circuits (n)	Part No.	Dimensions(in/mm)			Circuits (n)	Part No.	Dimensions(in/mm)		
		A	B	C			A	B	C
2	FWF30022-D02B23K6M	-	.262(6.65)	.169(4.30)	14	FWF30022-D14B23K6M	.709(18.00)	.970(24.65)	.878(22.30)
4	FWF30022-D04B23K6M	.118(3.00)	.380(9.65)	.287(7.30)	16	FWF30022-D16B23K6M	.827(21.00)	1.089(27.65)	.996(25.30)
6	FWF30022-D06B23K6M	.236(6.00)	.498(12.65)	.406(10.30)	18	FWF30022-D18B23K6M	.945(24.00)	1.207(30.65)	1.114(28.30)
8	FWF30022-D08B23K6M	.354(9.00)	.616(15.65)	.524(13.30)	20	FWF30022-D20B23K6M	1.063(27.00)	1.325(33.65)	1.232(31.30)
10	FWF30022-D10B23K6M	.472(12.00)	.734(18.65)	.642(16.30)	22	FWF30022-D22B23K6M	1.181(30.00)	1.443(36.65)	1.350(34.30)
12	FWF30022-D12B23K6M	.591(15.00)	.852(21.65)	.760(19.30)	24	FWF30022-D24B23K6M	1.299(33.00)	1.561(39.65)	1.469(37.30)

 THIRD ANGLE PROJECTION	GENERAL TOLERANCES (UNLESS SPECIFIED)		APPROVE BY	DATE	PART NO.	ITEM NO.	 Leader Of Industry	
	X.±.012(0.30)	X.*±5'	FRANK	18/JUN/13	FWF30022-DXXB23K6M	FWF30022		
DESIGN UNITS Inch (metric)	X.X±.008(0.20)	X.*±2'	CHECKED BY	DATE	TITLE		REV 0	SHEET NO. 2/2
SCALE	X.XX±.006(0.15)	.XX±1"	CHERRY	18/JUN/13	Wire to Board (Wafer) Pitch 3.0mm 90° Angled (SMT)			
5:1	X.XXX±.004(0.10)	.XXX*±0.5'	DRAWN BY	DATE	THIS DRAWING CONTAINS INFORMATION THAT IS PROPRIETARY TO TXGA INDUSTRIAL ELECTRONICS(S,Z)CO.,LTD AND SHOULD NOT BE USED WITHOUT WRITTEN PERMISSION			
SIZE A4			KEVIN	18/JUN/13				

## X-ON Electronics

Largest Supplier of Electrical and Electronic Components

*Click to view similar products for [Headers & Wire Housings](#) category:*

*Click to view products by [TXGA](#) manufacturer:*

Other Similar products are found below :

[0015917161](#) [0022155065](#) [57102-F02-18ULF](#) [58102-G61-06LF](#) [582553-1](#) [01.001.5753.1](#) [0050291907](#) [02.125.8002.8](#) [609-3404](#) [61062-3](#)  
[CSU011177004](#) [622-0430](#) [622-3653LF](#) [63453-116](#) [636-1030](#) [636-1427](#) [636-3427](#) [636-4007](#) [641938-9](#) [65495-038](#) [65692-001LF](#) [65781-018](#)  
[65781-047](#) [65817-010LF](#) [65817-015LF](#) [67095-007LF](#) [67601157](#) [68631-112](#) [68645-018](#) [699319-000](#) [70.362.1628.0](#) [70-4210](#) [70-4226B](#) [70-](#)  
[4853B](#) [71.350.2428.0](#) [733-134](#) [733-162](#) [760-3052](#) [MHR-64-VUAL](#) [80.063.4001.1](#) [800-90-001-10-001000](#) [801-43-002-10-013000](#)  
[801-43-006-10-002000](#) [803-43-024-10-001000](#) [803-93-012-10-001000](#) [8-1437020-4](#) [819-22-004-30-001101](#) [820-22-006-30-001101](#)  
[820-22-008-30-001101](#) [821-22-002-10-001101](#)