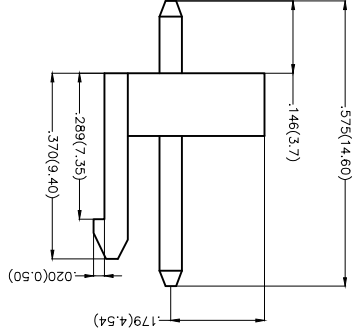


Recommended P.C. Board Layout



Ordering Information

FWF 396 01 - S XX S / 2 X XX B
 1 2 3 4 5 6 7 8 9 10

1 Category
 FWF-Water

2 Series Number
 396-Pitch 3.96mm

3 Distinction No.
 01

4 Row Option
 S-Single Row

5 Circuits
 XX

6 Entry Angle
 S-180° Vertical

7 Plating
 2-Tin Plated

8 Material-Resin
 2-PA66
 4-PA6T

9 Color-Resin
 W1-White
 W5-White
 K6-Black
 R1-Red

10 Packaging
 B-PE Bag

Electrical
 Current Rating: 7A AC(rms)/DC
 Voltage Rating: 250V AC(rms)/DC
 Contact Resistance: 10 mΩ Max
 Insulation Resistance: 1000 MΩ MIN
 Withstanding Voltage: 1500V AC r.m.s
 Temperature Range-Operating: -40°C~+85°C
 Material and Plating
 Housing: PA6T(UL 94V-0)/PA66(UL 94V-0)
 Contact Pin: Brass
 Plating: Tin Plated

THIRD ANGLE PROJECTION	DESIGN UNITS	X.±.012(0.30)	X.±.5	CHECKED BY	FRANK	DATE	19/SEP/15	APPROVE BY	FRANK	DATE	19/SEP/15	PART NO.	FWF39601-SXXSXXXXB	ITEM NO.	FWF39601
	INCH (METRIC)	X.X±.008(0.20)	X.±.2	CHEERY		DATE	19/SEP/15	DATE	19/SEP/15	DATE	19/SEP/15	TITLE	Wire to Board (Water)	REV 1	SHEET NO. 1/2
SCALE	SIZE	X.XX±.006(0.15)	.XX±.1	DRAWN BY	JACOB	DATE	19/SEP/15	GENERAL TOLERANCES (UNLESS SPECIFIED)							
5:1	A4	X.XX±.004(0.10)	.XX±0.5	THIS DRAWING CONTAINS INFORMATION THAT IS PROPRIETARY TO TXGA INDUSTRIAL ELECTRONICS(SZ)CO.,LTD AND SHOULD NOT BE USED WITHOUT WRITTEN PERMISSION											



REV	LOCATIONS	DESCRIPTION	DATE	REVISER	APPD
1	▽	Dimension 0.065(0.165) Change to 0.071(1.80)	20150919	CHEERY	FAN

REV	LOCATIONS	DESCRIPTION	DATE	REVISER	APPD
1		Dimension $\phi.065(\phi1.65)$ Change to $\phi.071(1.80)$	20150919	CHERRY	FAN

Material and Plating : Housing PA66 UL94V-0 , Tin-Plated.		Material and Plating : Housing PA6T UL94V-0 , Tin Plated.	
Circuits	Part No.	Dimensions(in/mm)	
		A	B
2	FWF39601-S02S22W1B	.311(7.92)	.156(3.96)
3	FWF39601-S03S22W1B	.311(7.92)	.468(11.88)
4	FWF39601-S04S22W1B	.468(11.88)	.624(15.84)
5	FWF39601-S05S22W1B	.624(15.84)	.780(19.80)
6	FWF39601-S06S22W1B	.780(19.80)	.935(23.76)
7	FWF39601-S07S22W1B	1.091(27.72)	.935(23.76)
8	FWF39601-S08S22W1B	1.247(31.68)	1.091(27.72)
9	FWF39601-S09S22W1B	1.403(35.64)	1.247(31.68)
10	FWF39601-S10S22W1B	1.559(39.60)	1.403(35.64)
11	FWF39601-S11S22W1B	1.715(43.56)	1.559(39.60)
12	FWF39601-S12S22W1B	1.871(47.52)	1.715(43.56)



THIRD ANGLE PROJECTION		GENERAL TOLERANCES (UNLESS SPECIFIED)	APPROVE BY	DATE	PART NO.	ITEM NO.
		X.±.012(0.30)	FRANK	19/SEP/15	FWF39601-SXXXXXXB	FWF39601
DESIGN UNITS		X.X±.008(0.20)	CHECKED BY	DATE	TITLE	
Inch (metric)		X.X±.008(0.20)	CHERRY	19/SEP/15	Wire to Board (Water)	
SCALE	SIZE	X.XX±.006(0.15)	DRAWN BY	DATE	THIS DRAWING CONTAINS INFORMATION THAT IS PROPRIETARY TO TXGA INDUSTRIAL ELECTRONICS(Z)CO.,LTD AND SHOULD NOT BE USED WITHOUT WRITTEN PERMISSION	
5:1	A4	X.XX±.004(0.10)	JACOB	19/SEP/15		

8 7 6 5 4 3 2 1

F

E

D

C

B

A

F

E

D

C

B

A

1

2

3

4

5

6

7

8

X-ON Electronics

Largest Supplier of Electrical and Electronic Components

Click to view similar products for [Headers & Wire Housings](#) category:

Click to view products by [TXGA](#) manufacturer:

Other Similar products are found below :

[95000-104TRLF](#) [10135584-644402LF](#) [DF62W-EP2022PCA](#) [95000-106TRLF](#) [DF62W-2022SCA](#) [DF62W-EP2022PC](#) [2203348](#) [DF62W-2022SC](#) [1084018](#) [1029039](#) [1084017](#) [802-10-012-10-002000](#) [1112640](#) [1112639](#) [891-007-9SS-BST1T](#) [000-34000](#) [0008550134](#) [0009482033](#) [0009507031](#) [57102-F02-18ULF](#) [57102-S06-03LF](#) [57202-S52-04LF](#) [PCN6-15S-2.5E](#) [0039019024](#) [58102-G61-06LF](#) [582553-1](#) [0009485154](#) [0009508121](#) [0022285053](#) [0050291907](#) [018731A](#) [LY20-4P-DT1-P1E-BR](#) [02.125.8002.8](#) [60101931](#) [60598-1 \(Cut Strip\)](#) [M1625-3R/100](#) [61062-3](#) [61082-181009](#) [CSU011177004](#) [636-1427](#) [638009-1](#) [641938-9](#) [641991-4](#) [644168-1](#) [644827-2](#) [647662-1](#) [65039-019ELF](#) [65692-001LF](#) [65781-018](#) [65781-047](#)