

Recommended P.C. Board Layout

THIRD ANGLE	DESIGN UNITS	SCALE	SIZE
	Inch (metric)	5:1	A4
	X.±.012(0.30)	X.XX±.006(0.15)	X.XX±.0.5
	X.X±.008(0.20)	X.X±.1	
	X.X±.2		

GENERAL TOLERANCES (UNLESS SPECIFIED)	APPROVE BY	DATE	PART NO.
	FRANK	19/SEP/15	FWF39601-SXXXSXXXXB
	CHECKED BY	DATE	TITLE
	CHERRY	19/SEP/15	Wire to Board (Water)
	DRAWN BY	DATE	WIRE TO BOARD (WATER)
	JACOB	19/SEP/15	Pitch 3.96mm 180° Vertical (DIP)

THIS DRAWING CONTAINS INFORMATION THAT IS PROPRIETARY TO TXGA INDUSTRIAL ELECTRONICS(SZ)CO.,LTD AND SHOULD NOT BE USED WITHOUT WRITTEN PERMISSION		SHEET NO. 1/2	
Leader Of Industry		REV 1	
TXGA		ITEM NO.	

Ordering Information

1	Category	FWF-Water
2	Series Number	396-Pitch 3.96mm
3	Distinction No.	01
4	Row Option	S-Single Row
5	Circuits	XX
6	Entry Angle	S-180° Vertical
7	Plating	2-Tin Plated
8	Material-Resin	2-PA66
9	Color-Resin	W1-White K6-Black R1-Red
10	Packaging	B-PE Bag

FWF 396 01 - S XX S 2 X XX B

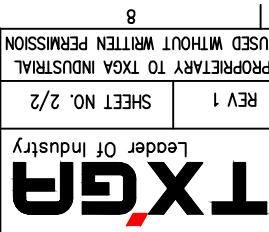
Electrical
 Current Rating: 7A AC(rms)/DC
 Voltage Rating: 250V AC(rms)/DC
 Contact Resistance: 10 mΩ Max
 Insulation Resistance: 1000 MΩ MIN
 Withstanding Voltage: 1500V AC r.m.s
 Temperature Range-Operating: -40°C~+85°C
 Material and Plating
 Housing: PA6T(UL 94V-0)/PA66(UL 94V-0)
 Contact Pin: Brass
 Plating: Tin Plated

REV	LOCATIONS	DESCRIPTION	DATE	REVISER	APPD
1		Dimension 0.065(0.165) Change to 0.071(1.80)	20150919	CHERRY	FAN

REV	LOCATIONS	DESCRIPTION	DATE	REVISER	APPD
1		Dimension $\phi.065(\phi1.65)$ Change to $\phi.071(1.80)$	20150919	CHERRY	FAN

Material and Plating : Housing PA66 UL94V-0 , Tin-Plated.		Material and Plating : Housing PA6T UL94V-0 , Tin Plated.	
Circuits	Part No.	Dimensions(in/mm)	
		A	B
2	FWF39601-S02S22W1B	.311(7.92)	.156(3.96)
3	FWF39601-S03S22W1B	.311(7.92)	.468(11.88)
4	FWF39601-S04S22W1B	.468(11.88)	.624(15.84)
5	FWF39601-S05S22W1B	.624(15.84)	.780(19.80)
6	FWF39601-S06S22W1B	.780(19.80)	.935(23.76)
7	FWF39601-S07S22W1B	.935(23.76)	1.091(27.72)
8	FWF39601-S08S22W1B	1.091(27.72)	1.247(31.68)
9	FWF39601-S09S22W1B	1.247(31.68)	1.403(35.64)
10	FWF39601-S10S22W1B	1.403(35.64)	1.559(39.60)
11	FWF39601-S11S22W1B	1.559(39.60)	1.715(43.56)
12	FWF39601-S12S22W1B	1.715(43.56)	1.871(47.52)

THIRD ANGLE PROJECTION		DESIGN UNITS	X.±.012(0.30)	X.±.5	CHECKED BY	FRANK	DATE	19/SEP/15	PART NO.	FWF39601-SXXXXXXB	ITEM NO.	FWF39601
		Inch (metric)	X.X±.008(0.20)	X.±.2	CHEERY	DATE	19/SEP/15	TITLE	Wire to Board (Water)	Pitch 3.96mm 180° Vertical (DIP)	REV 1	SHEET NO. 2/2
SCALE	SIZE	X.XX±.006(0.15)	X.X±.1	DRAWN BY	JACOB	DATE	19/SEP/15	THIS DRAWING CONTAINS INFORMATION THAT IS PROPRIETARY TO TXGA INDUSTRIAL ELECTRONICS(Z)CO.,LTD AND SHOULD NOT BE USED WITHOUT WRITTEN PERMISSION				
5:1	A4	X.XX±.004(0.10)	.XXX±0.5									



8
7
6
5
4
3
2
1

F

E

D

C

B

A

F

E

D

C

B

A

X-ON Electronics

Largest Supplier of Electrical and Electronic Components

Click to view similar products for [Headers & Wire Housings](#) category:

Click to view products by [TXGA](#) manufacturer:

Other Similar products are found below :

[95000-104TRLF](#) [10135584-644402LF](#) [DF62W-EP2022PCA](#) [95000-106TRLF](#) [DF62W-2022SCA](#) [DF62W-EP2022PC](#) [2203348](#) [DF62W-2022SC](#) [1084018](#) [1029039](#) [1084017](#) [802-10-012-10-002000](#) [1112640](#) [1112639](#) [891-007-9SS-BST1T](#) [000-34000](#) [0008550134](#) [0009482033](#) [0009507031](#) [57102-F02-18ULF](#) [57102-S06-03LF](#) [57202-S52-04LF](#) [PCN6-15S-2.5E](#) [0039019024](#) [58102-G61-06LF](#) [582553-1](#) [0009485154](#) [0009508121](#) [0022285053](#) [0050291907](#) [018731A](#) [LY20-4P-DT1-P1E-BR](#) [02.125.8002.8](#) [60101931](#) [60598-1 \(Cut Strip\)](#) [M1625-3R/100](#) [61062-3](#) [61082-181009](#) [CSU011177004](#) [636-1427](#) [638009-1](#) [641938-9](#) [641991-4](#) [644168-1](#) [644827-2](#) [647662-1](#) [65039-019ELF](#) [65692-001LF](#) [65781-018](#) [65781-047](#)