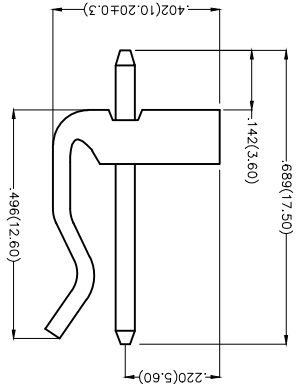
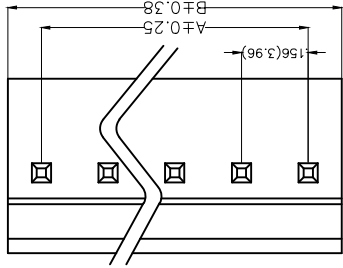
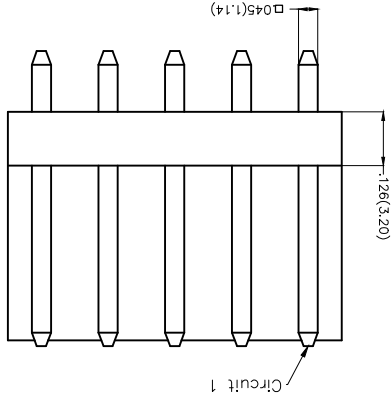
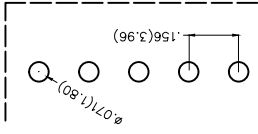


Recommended P.C.Board Layout



Electrical
 Current Rating: 6A AC(rms)/DC
 Voltage Rating: 250V AC(rms)/DC
 Contact Resistance: 10 mΩ Max
 Insulation Resistance: 1000 MΩ MIN
 Withstanding Voltage: 1500V AC r.m.s
 Temperature Range—Operating: -25°C~+85°C
 Material and Plating
 Housing: PA66 (UL 94V-0)
 Contact Pin: Brass
 Plating: Tin Plated

Ordering Information

FWF 396 03 - S XX S 2 2 T B
 1 2 3 4 5 6 7 8 9 10

- 1 Category FWF-Water
- 2 Series Number 396-Pitch 3.96mm
- 3 Distinction No. 03
- 4 Row Option Single Row
- 5 Circuits XX
- 6 Entry Angle S-180° Vertical
- 7 Plating 2-Tin Plated
- 8 Material-Resin 2-PA66
- 9 Color-Resin T-Transparent
- 10 Packaging B-PE Bag

THIRD ANGLE PROJECTION	DESIGN UNITS	X.X±.012(0.30)	X.X±.008(0.20)	X.X±.006(0.15)	X.XX±0.5	DATE	19/SEP/15
	SCALE	5:1	A4	X.XX±.004(0.10)	JACOB	DATE	19/SEP/15
THIRD ANGLE PROJECTION	DESIGN UNITS	X.X±.012(0.30)	X.X±.008(0.20)	X.XX±.006(0.15)	X.XX±0.5	DATE	19/SEP/15
THIRD ANGLE PROJECTION	DESIGN UNITS	X.X±.012(0.30)	X.X±.008(0.20)	X.XX±.006(0.15)	X.XX±0.5	DATE	19/SEP/15



DATE	19/SEP/15	FRANK	APPROVE BY
DATE	19/SEP/15	X.F5	CHECKED BY
DATE	19/SEP/15	CHERRY	DRAWN BY
DATE	19/SEP/15	JACOB	DRAWN BY

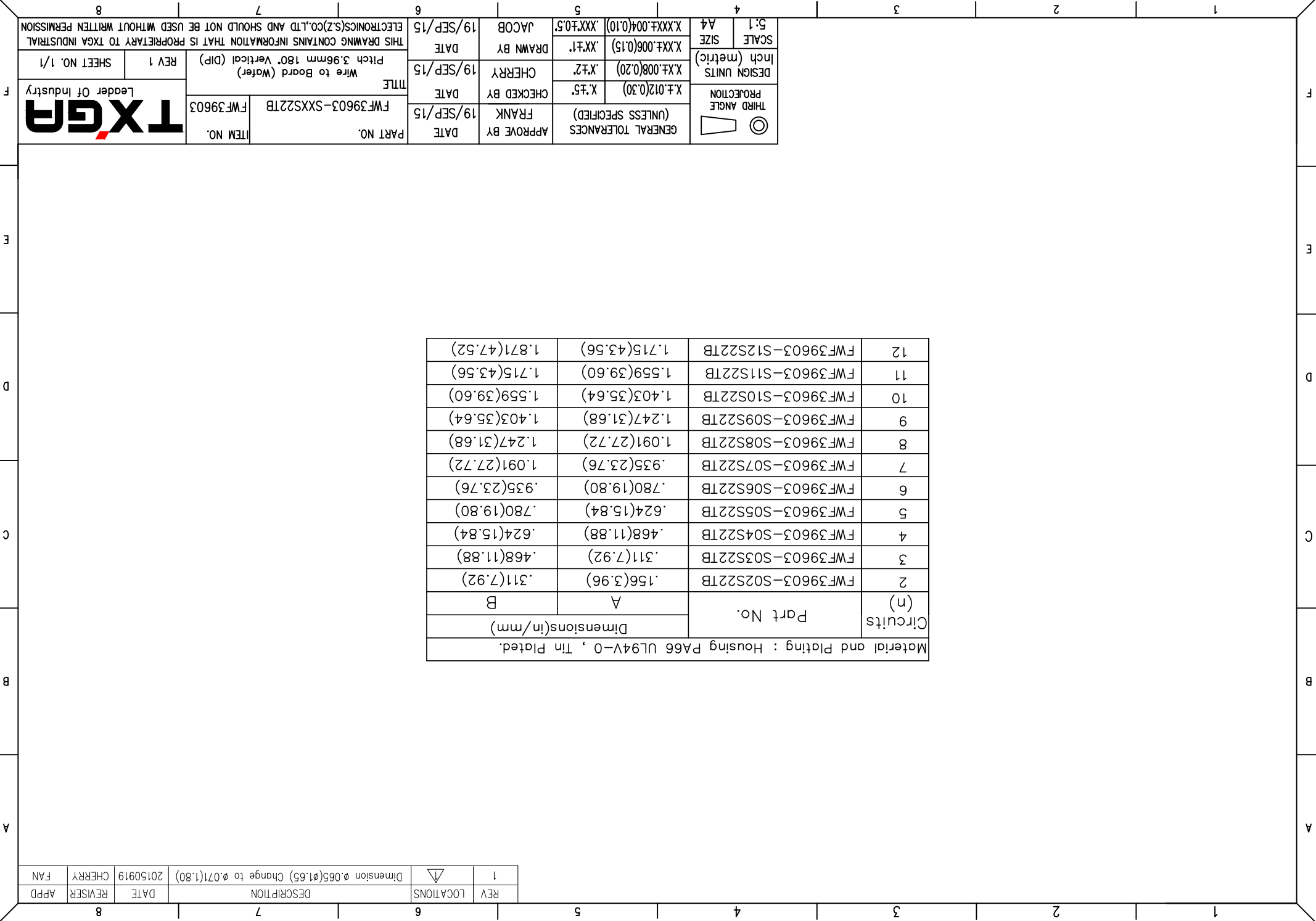
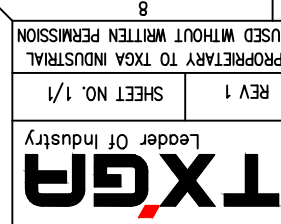
REV	LOCATIONS	DESCRIPTION	DATE	REVISER	APPD
1	▽	Dimension 0.065(1.65) Change to 0.071(1.80)	20150919	CHERRY	FAN

THIS DRAWING CONTAINS INFORMATION THAT IS PROPRIETARY TO TXGA INDUSTRIAL ELECTRONICS(SZ)CO.,LTD AND SHOULD NOT BE USED WITHOUT WRITTEN PERMISSION

REV	LOCATIONS	DESCRIPTION	DATE	REVISER	APPD
1		Dimension $\phi.065(\phi.1.65)$ Change to $\phi.071(1.80)$	20150919	CHERRY	FAN

Material and Plating : Housing P466 UL94V-0 , Tin Plated.			Dimensions(in/mm)		Part No.	Circuits (n)
		A	B			
2	FWF39603-S02S22TB	.156(3.96)	.311(7.92)			
3	FWF39603-S03S22TB	.311(7.92)	.468(11.88)			
4	FWF39603-S04S22TB	.468(11.88)	.624(15.84)			
5	FWF39603-S05S22TB	.624(15.84)	.780(19.80)			
6	FWF39603-S06S22TB	.780(19.80)	.935(23.76)			
7	FWF39603-S07S22TB	.935(23.76)	1.091(27.72)			
8	FWF39603-S08S22TB	1.091(27.72)	1.247(31.68)			
9	FWF39603-S09S22TB	1.247(31.68)	1.403(35.64)			
10	FWF39603-S10S22TB	1.403(35.64)	1.559(39.60)			
11	FWF39603-S11S22TB	1.559(39.60)	1.715(43.56)			
12	FWF39603-S12S22TB	1.715(43.56)	1.871(47.52)			

THIRD ANGLE PROJECTION		X.±.012(0.30)		X.±.5		CHECKED BY FRANK		DATE 19/SEP/15		PART NO. FWF39603-SXXS22TB		ITEM NO. FWF39603	
		X.±.008(0.20)		X.±.2		CHERRY		DATE 19/SEP/15		TITLE Wire to Board (Water)		REV 1	
DESIGN UNITS Inch (metric)		X.XX±.006(0.15)		X.±.1		DRAWN BY JACOB		DATE 19/SEP/15		THIS DRAWING CONTAINS INFORMATION THAT IS PROPRIETARY TO TXGA INDUSTRIAL ELECTRONICS(Z)CO.,LTD AND SHOULD NOT BE USED WITHOUT WRITTEN PERMISSION		SHEET NO. 1/1	
SCALE 5:1 A4		X.XX±.004(0.10)		X.XX±.0.5								8	



X-ON Electronics

Largest Supplier of Electrical and Electronic Components

Click to view similar products for [Headers & Wire Housings](#) category:

Click to view products by [TXGA](#) manufacturer:

Other Similar products are found below :

[95000-104TRLF](#) [10135584-644402LF](#) [DF62W-EP2022PCA](#) [95000-106TRLF](#) [DF62W-2022SCA](#) [DF62W-EP2022PC](#) [2203348](#) [DF62W-2022SC](#) [1084018](#) [1029039](#) [1084017](#) [802-10-012-10-002000](#) [1112640](#) [1112639](#) [891-007-9SS-BST1T](#) [000-34000](#) [0008550134](#) [0009482033](#) [0009507031](#) [57102-F02-18ULF](#) [57102-S06-03LF](#) [57202-S52-04LF](#) [PCN6-15S-2.5E](#) [0039019024](#) [58102-G61-06LF](#) [582553-1](#) [0009485154](#) [0009508121](#) [0022285053](#) [0050291907](#) [018731A](#) [LY20-4P-DT1-P1E-BR](#) [02.125.8002.8](#) [60101931](#) [60598-1 \(Cut Strip\)](#) [M1625-3R/100](#) [61062-3](#) [61082-181009](#) [CSU011177004](#) [636-1427](#) [638009-1](#) [641938-9](#) [641991-4](#) [644168-1](#) [644827-2](#) [647662-1](#) [65039-019ELF](#) [65692-001LF](#) [65781-018](#) [65781-047](#)