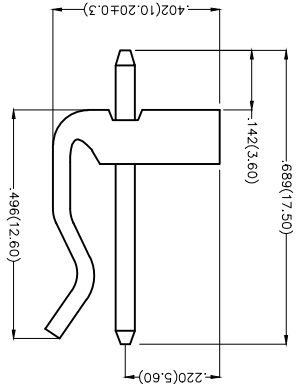
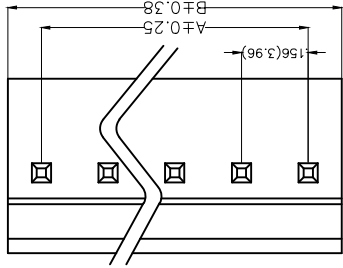
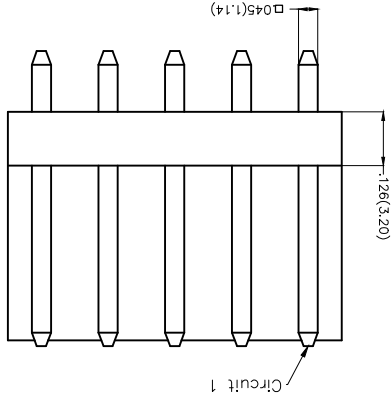
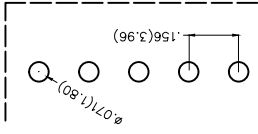


Recommended P.C.Board Layout



Electrical
 Current Rating: 6A AC(rms)/DC
 Voltage Rating: 250V AC(rms)/DC
 Contact Resistance: 10 mΩ Max
 Insulation Resistance: 1000 MΩ MIN
 Withstanding Voltage: 1500V AC r.m.s
 Temperature Range—Operating: -25°C~+85°C
 Material and Plating
 Housing: PA66 (UL 94V-0)
 Contact Pin: Brass
 Plating: Tin Plated

Ordering Information

FWF 396 03 — S XX S 2 2 T B
 1 2 3 4 5 6 7 8 9 10

- 1 Category FWF-Water
- 2 Series Number 396-Pitch 3.96mm
- 3 Distinction No. 03
- 4 Row Option Single Row
- 5 Circuits XX
- 6 Entry Angle S-180° Vertical
- 7 Plating 2-Tin Plated
- 8 Material-Resin 2-PA66
- 9 Color-Resin T-Transparent
- 10 Packaging B-PE Bag

THIRD ANGLE PROJECTION	DESIGN UNITS	X.X±.012(0.30)	X.F5	CHECKED BY	FRANK	DATE	19/SEP/15
	Inch (metric)	X.X±.008(0.20)	X.F2	CHERRY		DATE	19/SEP/15
SCALE	SIZE	X.XX±.006(0.15)	XX.F1	DRAWN BY	JACOB	DATE	19/SEP/15
5:1	A4	X.XX±.004(0.10)	XX.F0.5				

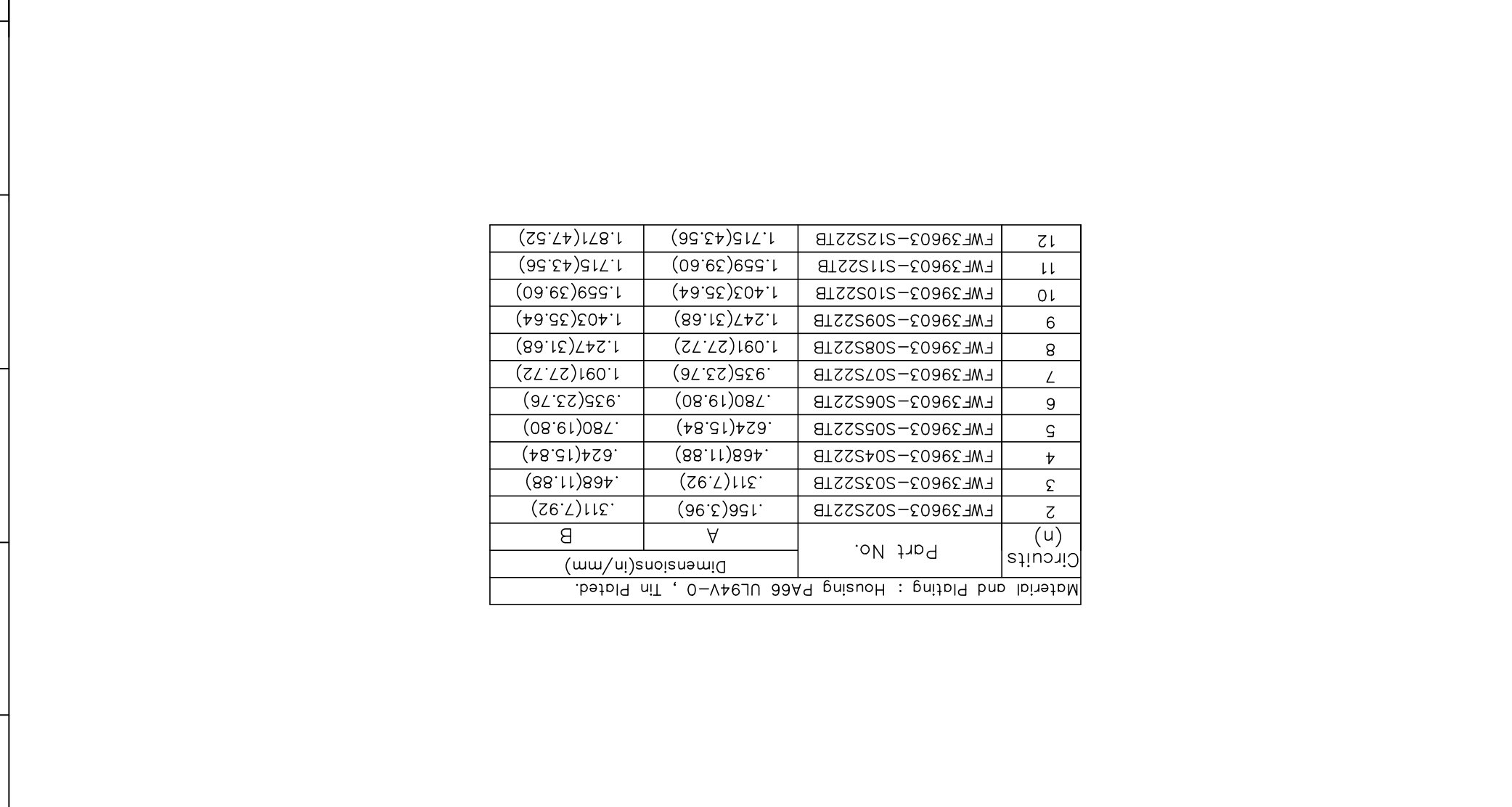


PART NO. FWF39603-SXXS22TB
 ITEM NO. FWF39603
 TITLE Wire to Board (Water)
 Pitch 3.96mm 180° Vertical (DIP)
 REV 1 SHEET NO. 1/1
 THIS DRAWING CONTAINS INFORMATION THAT IS PROPRIETARY TO TXGA INDUSTRIAL ELECTRONICS(SZ)CO.,LTD AND SHOULD NOT BE USED WITHOUT WRITTEN PERMISSION

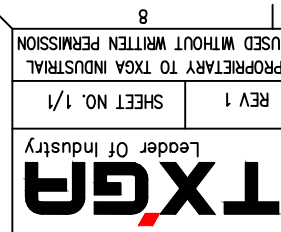
REV	LOCATIONS	DESCRIPTION	DATE	REVISER	APPD
1	▽	Dimension 0.065(1.65) Change to 0.071(1.80)	20150919	CHERRY	FAN

REV	LOCATIONS	DESCRIPTION	DATE	REVISER	APPD
1		Dimension $\phi.065(\phi.1.65)$ Change to $\phi.071(1.80)$	20150919	CHERRY	FAN

Material and Plating : Housing P466 UL94V-0 , Tin Plated.		Dimensions(in/mm)		Part No.	Circuits (n)
		A	B		
2	FWF39603-S02S22TB	.156(3.96)	.311(7.92)		
3	FWF39603-S03S22TB	.311(7.92)	.468(11.88)		
4	FWF39603-S04S22TB	.468(11.88)	.624(15.84)		
5	FWF39603-S05S22TB	.624(15.84)	.780(19.80)		
6	FWF39603-S06S22TB	.780(19.80)	.935(23.76)		
7	FWF39603-S07S22TB	.935(23.76)	1.091(27.72)		
8	FWF39603-S08S22TB	1.091(27.72)	1.247(31.68)		
9	FWF39603-S09S22TB	1.247(31.68)	1.403(35.64)		
10	FWF39603-S10S22TB	1.403(35.64)	1.559(39.60)		
11	FWF39603-S11S22TB	1.559(39.60)	1.715(43.56)		
12	FWF39603-S12S22TB	1.715(43.56)	1.871(47.52)		



THIRD ANGLE PROJECTION		X.±.012(0.30)		X.±.5		CHECKED BY FRANK		DATE 19/SEP/15		PART NO. FWF39603-SXXS22TB		ITEM NO. FWF39603	
		X.±.008(0.20)		X.±.2		CHERRY		DATE 19/SEP/15		TITLE Wire to Board (Water)		REV 1	
DESIGN UNITS Inch (metric)		X.XX±.006(0.15)		X.XX±.1		DRAWN BY JACOB		DATE 19/SEP/15		ELECTRONICS(Z)CO.,LTD AND SHOULD NOT BE USED WITHOUT WRITTEN PERMISSION		SHEET NO. 1/1	
SCALE 5:1 A4		X.XX±.004(0.10)		X.XX±.0.5						THIS DRAWING CONTAINS INFORMATION THAT IS PROPRIETARY TO TXGA INDUSTRIAL		8	



A B C D E F

1 2 3 4 5 6 7 8

X-ON Electronics

Largest Supplier of Electrical and Electronic Components

Click to view similar products for [Headers & Wire Housings](#) category:

Click to view products by [TXGA](#) manufacturer:

Other Similar products are found below :

[95000-104TRLF](#) [10135584-644402LF](#) [DF62W-EP2022PCA](#) [95000-106TRLF](#) [DF62W-2022SCA](#) [DF62W-EP2022PC](#) [2203348](#) [DF62W-2022SC](#) [1084018](#) [1029039](#) [1084017](#) [802-10-012-10-002000](#) [1112640](#) [1112639](#) [891-007-9SS-BST1T](#) [000-34000](#) [0008550134](#) [0009482033](#) [0009507031](#) [57102-F02-18ULF](#) [57102-S06-03LF](#) [57202-S52-04LF](#) [PCN6-15S-2.5E](#) [0039019024](#) [58102-G61-06LF](#) [582553-1](#) [0009485154](#) [0009508121](#) [0022285053](#) [0050291907](#) [018731A](#) [LY20-4P-DT1-P1E-BR](#) [02.125.8002.8](#) [60101931](#) [60598-1 \(Cut Strip\)](#) [M1625-3R/100](#) [61062-3](#) [61082-181009](#) [CSU011177004](#) [636-1427](#) [638009-1](#) [641938-9](#) [641991-4](#) [644168-1](#) [644827-2](#) [647662-1](#) [65039-019ELF](#) [65692-001LF](#) [65781-018](#) [65781-047](#)