

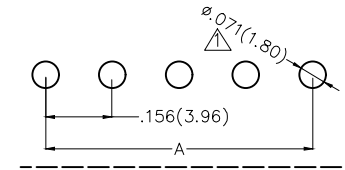
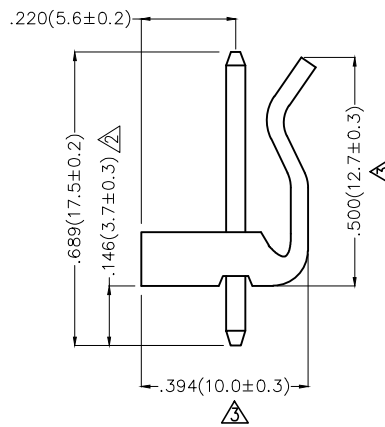
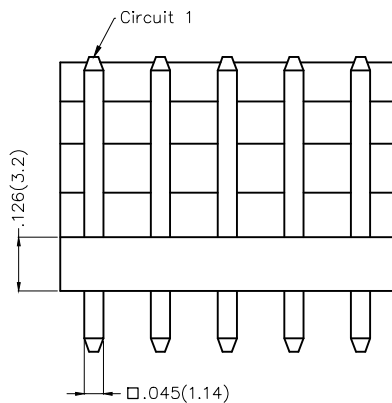
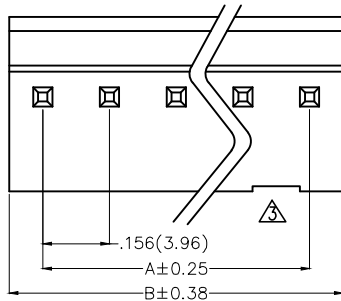
REV	LOCATIONS	DESCRIPTION	DATE	REVISER	APPD
1		Dimension $\phi.065(\phi 1.65)$ Change to $\phi.071(1.80)$	20150919	CHERRY	FAN
2		Size change	14/MAY/20	KATE	CHERRY
3		Structural and size changes	22/APR/21	KATE	JOHNNY

**Electrical**

Current Rating: 6A AC(rms)/DC  
Voltage Rating: 250V AC(rms)/DC  
Contact Resistance: 10 m $\Omega$  Max  
Insulation Resistance: 1000 M $\Omega$  MIN  
Withstanding Voltage: 1500V AC r.m.s  
Temperature Range-Operating: -25°C~+85°C

**Material and Plating**

Housing: PA66( UL 94V-0)  
Contact Pin: Brass  
Plating: Tin Plated

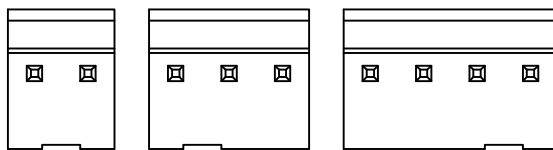


Recommended P.C.Board Layout

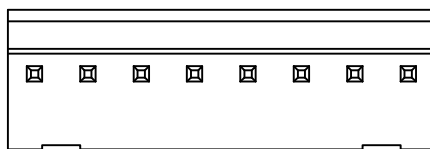
**Ordering Information**

FWF 396 03 - S XX S 2 2 T B  
1 2 3 4 5 6 7 8 9 10

1   Category FWF-Wafer	2   Series Number 396-Pitch 3.96mm	3   Distinction No. 03	4   Row Option S-Single Row	5   Circuits XX	6   Entry Angle S-180° Vertical
7   Plating 2-Tin Plated	8   Material-Resin 2-PA66	9   Color-Resin T-Transparent	10   Packaging B-PE Bag		



2 Circuits      3,6,7 Circuits      4,5 Circuits



8~12 Circuits

 <b>THIRD ANGLE PROJECTION</b>	GENERAL TOLERANCES (UNLESS SPECIFIED)		APPROVE BY FRANK	DATE 19/SEP/15	PART NO. FWF39603-SXXS22TB	ITEM NO. FWF39603	 <b>TXGA</b> Leader Of Industry	
	DESIGN UNITS Inch (metric)	X.±.012(0.30)	X.'±5'	CHECKED BY CHERRY	DATE 19/SEP/15	TITLE Wire to Board (Wafer) Pitch 3.96mm 180° Vertical (DIP)		REV 3
SCALE 5:1	SIZE A4	X.XX±.008(0.20)	X.'±2'	DRAWN BY JACOB	DATE 19/SEP/15	THIS DRAWING CONTAINS INFORMATION THAT IS PROPRIETARY TO TXGA INDUSTRIAL ELECTRONICS(S.Z)CO.,LTD AND SHOULD NOT BE USED WITHOUT WRITTEN PERMISSION		

1 2 3 4 5 6 7 8

REV	LOCATIONS	DESCRIPTION	DATE	REVISER	APPD

A

A

B

B

C

C

D

D



E

E

F

F

Circuits (n)	Part No.	Dimensions(in/mm)	
		A	B
2	FWF39603-S02S22TB	.156(3.96)	.311(7.92)
3	FWF39603-S03S22TB	.311(7.92)	.468(11.88)
4	FWF39603-S04S22TB	.468(11.88)	.624(15.84)
5	FWF39603-S05S22TB	.624(15.84)	.780(19.80)
6	FWF39603-S06S22TB	.780(19.80)	.935(23.76)
7	FWF39603-S07S22TB	.935(23.76)	1.091(27.72)
8	FWF39603-S08S22TB	1.091(27.72)	1.247(31.68)
9	FWF39603-S09S22TB	1.247(31.68)	1.403(35.64)
10	FWF39603-S10S22TB	1.403(35.64)	1.559(39.60)
11	FWF39603-S11S22TB	1.559(39.60)	1.715(43.56)
12	FWF39603-S12S22TB	1.715(43.56)	1.871(47.52)

 THIRD ANGLE PROJECTION	GENERAL TOLERANCES (UNLESS SPECIFIED)		APPROVE BY FRANK	DATE 19/SEP/15	PART NO. FWF39603-SXXS22TB	ITEM NO. FWF39603	 Leader Of Industry	
	DESIGN UNITS Inch (metric)	X.±.012(0.30)	X.±5'	CHECKED BY CHERRY	DATE 19/SEP/15	TITLE Wire to Board (Wafer) Pitch 3.96mm 180° Vertical (DIP)		REV 3
	SCALE 5:1	SIZE A4	X.XX±.008(0.20)	X.±2'	DRAWN BY JACOB	DATE 19/SEP/15	THIS DRAWING CONTAINS INFORMATION THAT IS PROPRIETARY TO TXGA INDUSTRIAL ELECTRONICS(S.Z)CO.,LTD AND SHOULD NOT BE USED WITHOUT WRITTEN PERMISSION	

1 2 3 4 5 6 7 8

## X-ON Electronics

Largest Supplier of Electrical and Electronic Components

*Click to view similar products for [Headers & Wire Housings](#) category:*

*Click to view products by [TXGA](#) manufacturer:*

Other Similar products are found below :

[0015917161](#) [0022155065](#) [57102-F02-18ULF](#) [58102-G61-06LF](#) [582553-1](#) [01.001.5753.1](#) [0050291907](#) [02.125.8002.8](#) [609-3404](#) [61062-3](#)  
[CSU011177004](#) [622-0430](#) [622-3653LF](#) [63453-116](#) [636-1030](#) [636-1427](#) [636-3427](#) [636-4007](#) [641938-9](#) [65495-038](#) [65692-001LF](#) [65781-018](#)  
[65781-047](#) [65817-010LF](#) [65817-015LF](#) [67095-007LF](#) [67601157](#) [68631-112](#) [68645-018](#) [699319-000](#) [70.362.1628.0](#) [70-4210](#) [70-4226B](#) [70-](#)  
[4853B](#) [71.350.2428.0](#) [733-134](#) [733-162](#) [760-3052](#) [MHR-64-VUAL](#) [80.063.4001.1](#) [800-90-001-10-001000](#) [801-43-002-10-013000](#)  
[801-43-006-10-002000](#) [803-43-024-10-001000](#) [803-93-012-10-001000](#) [8-1437020-4](#) [819-22-004-30-001101](#) [820-22-006-30-001101](#)  
[820-22-008-30-001101](#) [821-22-002-10-001101](#)