

| REV | LOCATIONS | DESCRIPTION | DATE | REVISER | APPD |
|-----|-----------|-------------|------|---------|------|
|     |           |             |      |         |      |

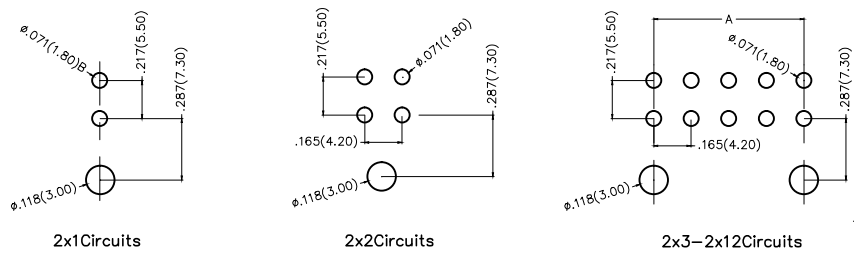
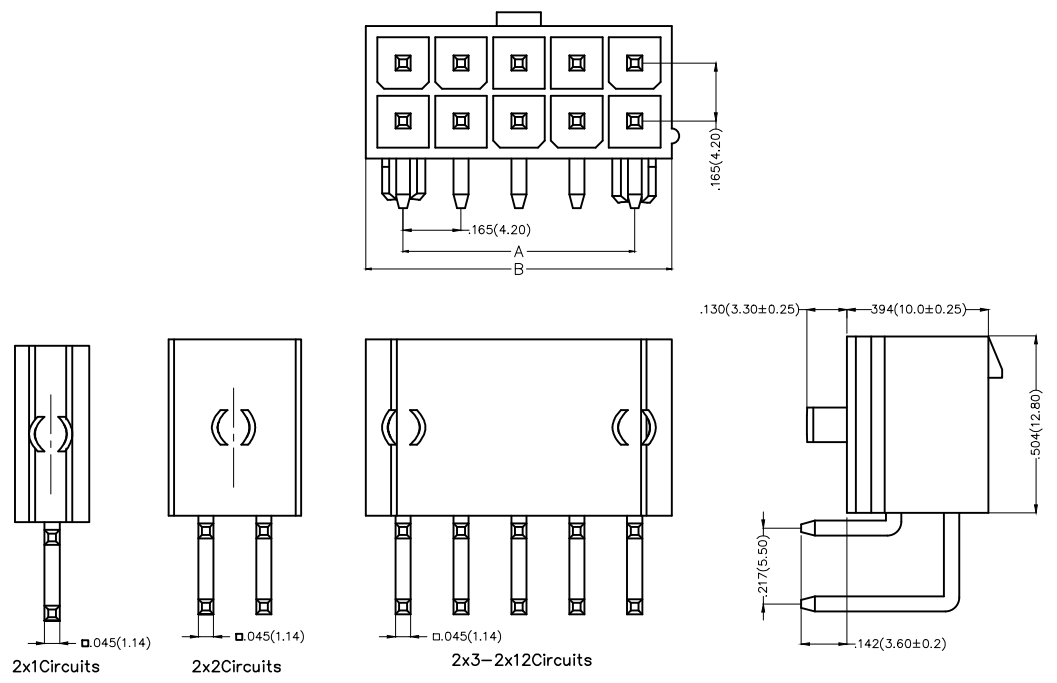
**Electrical**

Current Rating: 7A AC(rms)/DC  
Voltage Rating: 600V AC(rms)/DC  
Contact Resistance: 10 m Ω Max  
Insulation Resistance: 1000 M Ω MIN  
Withstanding Voltage: 1500V AC r.m.s  
Temperature Range—Operating: -40°C ~ +105°C

**Material and Plating**

Housing: PA66( UL 94V-0)  
Contact Pin: Brass  
Plating: Tin Plated

| Circuits (n) | Part No.          | Dimensions(in./mm) |              |
|--------------|-------------------|--------------------|--------------|
|              |                   | A                  | B            |
| 2            | FWF42004-D02B22TK | —                  | .213(5.40)   |
| 4            | FWF42004-D04B22TK | .165(4.20)         | .379(9.60)   |
| 6            | FWF42004-D06B22TK | .331(8.40)         | .543(13.80)  |
| 8            | FWF42004-D08B22TK | .496(12.60)        | .709(18.00)  |
| 10           | FWF42004-D10B22TK | .661(16.80)        | .874(22.20)  |
| 12           | FWF42004-D12B22TK | .827(21.00)        | 1.039(26.40) |
| 14           | FWF42004-D14B22TK | .992(25.20)        | 1.205(30.60) |
| 16           | FWF42004-D16B22TK | 1.157(29.40)       | 1.370(34.80) |
| 18           | FWF42004-D18B22TK | 1.323(33.60)       | 1.535(39.00) |
| 20           | FWF42004-D20B22TK | 1.488(37.80)       | 1.700(43.20) |
| 22           | FWF42004-D22B22TK | 1.654(42.00)       | 1.866(47.40) |
| 24           | FWF42004-D24B22TK | 1.819(46.20)       | 2.031(51.60) |



Recommended P.C.Board Layout

**Ordering Information**

FWF 420 04 — D XX B 2 2 T K  
1 2 3 4 5 6 7 8 9 10

|   |              |   |                 |   |                 |    |            |   |          |   |             |
|---|--------------|---|-----------------|---|-----------------|----|------------|---|----------|---|-------------|
| 1 | Category     | 2 | Series Number   | 3 | Distinction No. | 4  | Row Option | 5 | Circuits | 6 | Entry Angle |
|   | FWF—Wafer    |   | 420—Pitch 4.2mm |   | 04              |    | Double Row |   | XX       |   | B—90° Angle |
| 7 | Plating      | 8 | Material—Resin  | 9 | Color—Resin     | 10 | Packaging  |   |          |   |             |
|   | 2—Tin Plated |   | 2—PA66          |   | T—Transparent   |    | K—Tray     |   |          |   |             |

|                               |                                       |            |            |           |  |          |                        |
|-------------------------------|---------------------------------------|------------|------------|-----------|--|----------|------------------------|
| <br>THIRD ANGLE PROJECTION    | GENERAL TOLERANCES (UNLESS SPECIFIED) |            | APPROVE BY | DATE      | PART NO.   | ITEM NO. | <br>Leader Of Industry |
|                               | X.±.012(0.30)                         | X.±5'      | FRANK      | 28/JUN/13 | FWF42004-DXXB22TK  | FWF42004 |                        |
| DESIGN UNITS<br>Inch (metric) | X.X±.008(0.20)                        | .X'±2'     | CHECKED BY | DATE      | TITLE  |          | REV 0    SHEET NO. 1/1 |
| SCALE                         | X.XX±.006(0.15)                       | .XX'±1'    | JACOB      | 28/JUN/13 | Wire to Board (Wafer)<br>Pitch 4.2mm 90° Angle (DIP)   |          |                        |
| SIZE                          | X.XXX±.004(0.10)                      | .XXX'±0.5' | DRAWN BY   | DATE      | THIS DRAWING CONTAINS INFORMATION THAT IS PROPRIETARY TO TXGA INDUSTRIAL ELECTRONICS(S.Z)CO.,LTD AND SHOULD NOT BE USED WITHOUT WRITTEN PERMISSION |          |                        |
| 5:1                           |                                       |            | CERRY      | 28/JUN/13 |  |          |                        |

## X-ON Electronics

Largest Supplier of Electrical and Electronic Components

*Click to view similar products for [Headers & Wire Housings](#) category:*

*Click to view products by [TXGA](#) manufacturer:*

Other Similar products are found below :

[0015917161](#) [0022155065](#) [57102-F02-18ULF](#) [58102-G61-06LF](#) [582553-1](#) [01.001.5753.1](#) [0050291907](#) [02.125.8002.8](#) [609-3404](#) [61062-3](#)  
[CSU011177004](#) [622-0430](#) [622-3653LF](#) [63453-116](#) [636-1030](#) [636-1427](#) [636-3427](#) [636-4007](#) [641938-9](#) [65495-038](#) [65692-001LF](#) [65781-018](#)  
[65781-047](#) [65817-010LF](#) [65817-015LF](#) [67095-007LF](#) [67601157](#) [68631-112](#) [68645-018](#) [699319-000](#) [70.362.1628.0](#) [70-4210](#) [70-4226B](#) [70-](#)  
[4853B](#) [71.350.2428.0](#) [733-134](#) [733-162](#) [760-3052](#) [MHR-64-VUAL](#) [80.063.4001.1](#) [800-90-001-10-001000](#) [801-43-002-10-013000](#)  
[801-43-006-10-002000](#) [803-43-024-10-001000](#) [803-93-012-10-001000](#) [8-1437020-4](#) [819-22-004-30-001101](#) [820-22-006-30-001101](#)  
[820-22-008-30-001101](#) [821-22-002-10-001101](#)