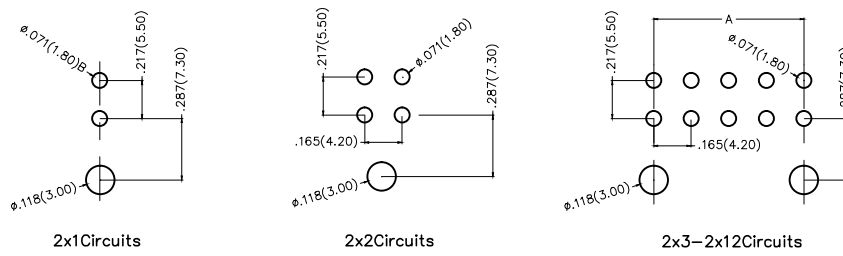
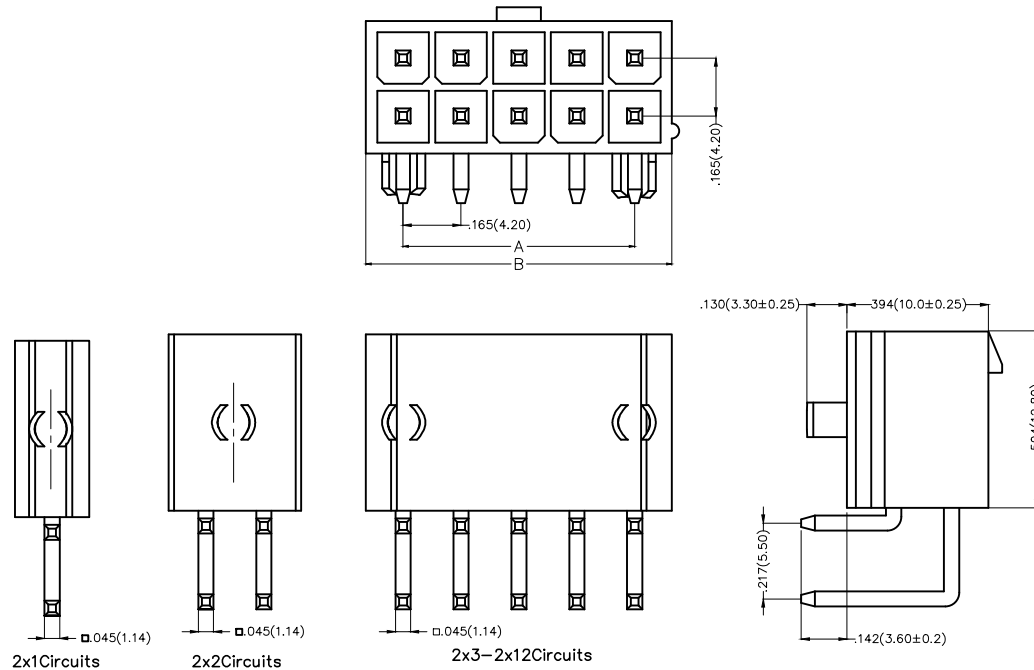


REV	LOCATIONS	DESCRIPTION	DATE	REVISER	APPD

Electrical
 Current Rating: 7A AC(rms)/DC
 Voltage Rating: 600V AC(rms)/DC
 Contact Resistance: 10 m Ω Max
 Insulation Resistance: 1000 M Ω MIN
 Withstanding Voltage: 1500V AC r.m.s
 Temperature Range—Operating: -40°C ~ +105°C
 Material and Plating
 Housing: PA66(UL 94V-0)
 Contact Pin: Brass
 Plating: Tin Plated

Circuits (n)	Part No.	Dimensions(in./mm)	
		A	B
2	FWF42004-D02B22TK	—	.213(5.40)
4	FWF42004-D04B22TK	.165(4.20)	.379(9.60)
6	FWF42004-D06B22TK	.331(8.40)	.543(13.80)
8	FWF42004-D08B22TK	.496(12.60)	.709(18.00)
10	FWF42004-D10B22TK	.661(16.80)	.874(22.20)
12	FWF42004-D12B22TK	.827(21.00)	1.039(26.40)
14	FWF42004-D14B22TK	.992(25.20)	1.205(30.60)
16	FWF42004-D16B22TK	1.157(29.40)	1.370(34.80)
18	FWF42004-D18B22TK	1.323(33.60)	1.535(39.00)
20	FWF42004-D20B22TK	1.488(37.80)	1.700(43.20)
22	FWF42004-D22B22TK	1.654(42.00)	1.866(47.40)
24	FWF42004-D24B22TK	1.819(46.20)	2.031(51.60)



Recommended P.C.Board Layout

Ordering Information

FWF 420 04 — D XX B 2 2 T K
 1 2 3 4 5 6 7 8 9 10

1 Category	2 Series Number	3 Distinction No.	4 Row Option	5 Circuits	6 Entry Angle
FWF—Wafer	420—Pitch 4.2mm	04	Double Row	XX	B—90° Angle
7 Plating	8 Material—Resin	9 Color—Resin	10 Packaging		
2—Tin Plated	2—PA66	T—Transparent	K—Tray		

 THIRD ANGLE PROJECTION	GENERAL TOLERANCES (UNLESS SPECIFIED)		APPROVE BY	DATE	PART NO.	ITEM NO.	 Leader Of Industry
	X.±.012(0.30)	X.±5'	FRANK	28/JUN/13	FWF42004-DXXB22TK	FWF42004	
DESIGN UNITS Inch (metric)	X.X±.008(0.20)	.X'±2'	CHECKED BY	DATE	TITLE		REV 0 SHEET NO. 1/1
SCALE SIZE	X.XX±.006(0.15)	.XX'±1'	JACOB	28/JUN/13	Wire to Board (Wafer) Pitch 4.2mm 90° Angle (DIP)		
5:1 A4	X.XXX±.004(0.10)	.XXX'±0.5'	DRAWN BY	DATE	THIS DRAWING CONTAINS INFORMATION THAT IS PROPRIETARY TO TXGA INDUSTRIAL ELECTRONICS(S.Z)CO.,LTD AND SHOULD NOT BE USED WITHOUT WRITTEN PERMISSION		
			CERRY	28/JUN/13			

X-ON Electronics

Largest Supplier of Electrical and Electronic Components

Click to view similar products for [Headers & Wire Housings](#) category:

Click to view products by [TXGA](#) manufacturer:

Other Similar products are found below :

[0015917161](#) [0022155065](#) [57102-F02-18ULF](#) [58102-G61-06LF](#) [582553-1](#) [01.001.5753.1](#) [0050291907](#) [02.125.8002.8](#) [609-3404](#) [61062-3](#)
[CSU011177004](#) [622-0430](#) [622-3653LF](#) [63453-116](#) [636-1030](#) [636-1427](#) [636-3427](#) [636-4007](#) [641938-9](#) [65495-038](#) [65692-001LF](#) [65781-018](#)
[65781-047](#) [65817-010LF](#) [65817-015LF](#) [67095-007LF](#) [67601157](#) [68631-112](#) [68645-018](#) [699319-000](#) [70.362.1628.0](#) [70-4210](#) [70-4226B](#) [70-](#)
[4853B](#) [71.350.2428.0](#) [733-134](#) [733-162](#) [760-3052](#) [MHR-64-VUAL](#) [80.063.4001.1](#) [800-90-001-10-001000](#) [801-43-002-10-013000](#)
[801-43-006-10-002000](#) [803-43-024-10-001000](#) [803-93-012-10-001000](#) [8-1437020-4](#) [819-22-004-30-001101](#) [820-22-006-30-001101](#)
[820-22-008-30-001101](#) [821-22-002-10-001101](#)