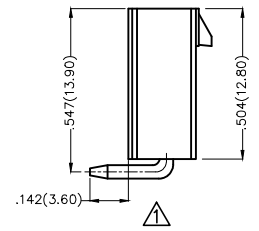
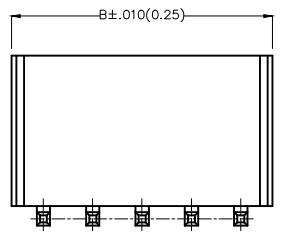
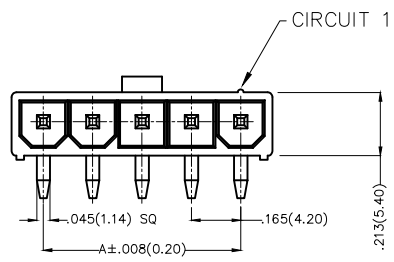


| REV | LOCATIONS | DESCRIPTION | DATE | REVISED | APPD |
|-----|-----------|---|-----------|---------|--------|
| 1 | | Change the height of 3 circuits to be the same as other circuits. | 05/JUL/19 | KATE | CHERRY |

Electrical
 Current Rating: 9A AC(rms)/DC
 Voltage Rating: 600V AC(rms)/DC
 Contact Resistance: 10 mΩ Max
 Insulation Resistance: 1000 MΩ MIN
 Withstanding Voltage: 1500V AC r.m.s
 Temperature Range—Operating: -40°C ~ +105°C
 Material and Plating
 Housing: PA66(UL 94V-0)
 Contact Pin: Brass
 Plating: Tin Plated

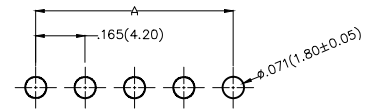


| Circuits (n) | Part No. | Dimensions(in./mm) | |
|--------------|-------------------|--------------------|-------------|
| | | A | B |
| 2 | FWF42007-S02B22TK | .165(4.20) | .379(9.60) |
| 3 | FWF42007-S03B22TK | .331(8.40) | .543(13.80) |
| 4 | FWF42007-S04B22TK | .496(12.60) | .709(18.00) |
| 5 | FWF42007-S05B22TK | .661(16.80) | .874(22.20) |

Ordering Information

FWF 420 07 — S XX B 2 2 T K
 1 2 3 4 5 6 7 8 9 10

| | | | | | | | | | | | |
|---|-------------------------|---|---------------------------------|---|------------------------------|----|----------------------------|---|----------------|---|----------------------------|
| 1 | Category FWF—Wafer | 2 | Series Number 420—Pitch4.2mm | 3 | Distinction No. 07 | 4 | Row Option S—Single Row | 5 | Circuits XX | 6 | Entry Angle B—90° Angle |
| 7 | Plating 2—Tin Plated | 8 | Material—Resin 2—PA66 | 9 | Color—Resin T—Transparent | 10 | Packaging K—Tray | | | | |



Recommended P.C.Board Layout

| THIRD ANGLE PROJECTION | | GENERAL TOLERANCES (UNLESS SPECIFIED) | | APPROVE BY | DATE | PART NO. | ITEM NO. | Leader Of Industry | |
|------------------------|---------------|---------------------------------------|------------|------------|-----------|--|----------|------------------------|---------------|
| DESIGN UNITS | INCH (metric) | X.±.012(0.30) | X.±5' | FRANK | 28/JUN/13 | FWF42007-SXXB22TK | FWF42007 | | |
| SCALE | SIZE | X.X±.008(0.20) | .X'±2' | CHECKED BY | DATE | Wire to Board (Wafer) Pitch 4.2mm 90° Angle (DIP) | | REV 1 | SHEET NO. 1/1 |
| 5:1 | A4 | X.XX±.006(0.15) | .XX'±1' | DRAWN BY | DATE | THIS DRAWING CONTAINS INFORMATION THAT IS PROPRIETARY TO TXGA INDUSTRIAL ELECTRONICS(S.Z)CO.,LTD AND SHOULD NOT BE USED WITHOUT WRITTEN PERMISSION | | | |
| | | X.XXX±.004(0.10) | .XXX'±0.5' | CHERRY | 28/JUN/13 | | | | |

X-ON Electronics

Largest Supplier of Electrical and Electronic Components

Click to view similar products for [Headers & Wire Housings](#) category:

Click to view products by [TXGA](#) manufacturer:

Other Similar products are found below :

[57102-F02-18ULF](#) [58102-G61-06LF](#) [0009485154](#) [009176003701906](#) [0050291907](#) [02.125.8002.8](#) [609-3404](#) [61062-3](#) [622-0430](#) [622-3653LF](#)
[63453-116](#) [636-1030](#) [636-1427](#) [636-3427](#) [636-4007](#) [641938-9](#) [644827-2](#) [65495-038](#) [65692-001LF](#) [65781-018](#) [65781-047](#) [65817-010LF](#)
[65817-015LF](#) [66207-023LF](#) [67016-026LF](#) [67095-007LF](#) [68631-112](#) [68645-018](#) [68648-049](#) [699319-000](#) [70.362.1628.0](#) [70-4210](#) [70-4226B](#)
[70-4853B](#) [707-5020](#) [707-5028](#) [71.350.2428.0](#) [71961-016LF](#) [733-134](#) [754199-000](#) [760-3052](#) [787-8014-00](#) [FCN-367T-T012/H](#) [80.063.4001.1](#)
[800-90-010-10-002000](#) [801-43-002-10-013000](#) [801-43-006-10-002000](#) [803-41-018-10-001000](#) [803-43-014-20-001000](#) [803-43-024-10-001000](#)