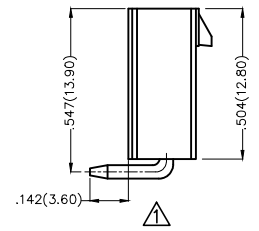
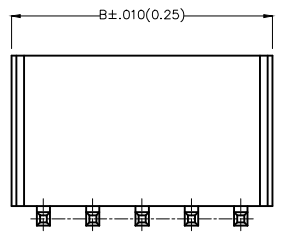
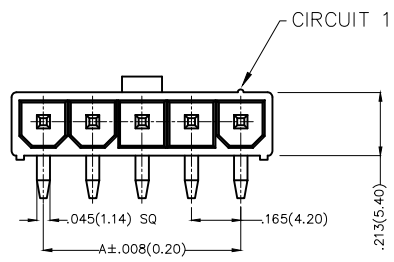


REV	LOCATIONS	DESCRIPTION	DATE	REVISED	APPD
1		Change the height of 3 circuits to be the same as other circuits.	05/JUL/19	KATE	CHERRY

Electrical  
 Current Rating: 9A AC(rms)/DC  
 Voltage Rating: 600V AC(rms)/DC  
 Contact Resistance: 10 mΩ Max  
 Insulation Resistance: 1000 MΩ MIN  
 Withstanding Voltage: 1500V AC r.m.s  
 Temperature Range—Operating: -40°C ~ +105°C

Material and Plating  
 Housing: PA66( UL 94V-0)  
 Contact Pin: Brass  
 Plating: Tin Plated

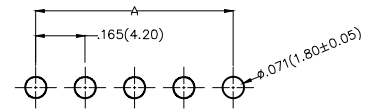


Circuits (n)	Part No.	Dimensions(in./mm)	
		A	B
2	FWF42007-S02B22TK	.165(4.20)	.379(9.60)
3	FWF42007-S03B22TK	.331(8.40)	.543(13.80)
4	FWF42007-S04B22TK	.496(12.60)	.709(18.00)
5	FWF42007-S05B22TK	.661(16.80)	.874(22.20)

### Ordering Information

FWF 420 07 — S XX B 2 2 T K  
 1 2 3 4 5 6 7 8 9 10

1	Category FWF—Wafer	2	Series Number 420—Pitch4.2mm	3	Distinction No. 07	4	Row Option S—Single Row	5	Circuits XX	6	Entry Angle B—90° Angle
7	Plating 2—Tin Plated	8	Material—Resin 2—PA66	9	Color—Resin T—Transparent	10	Packaging K—Tray				



Recommended P.C.Board Layout

THIRD ANGLE PROJECTION		GENERAL TOLERANCES (UNLESS SPECIFIED)		APPROVE BY	DATE	PART NO.	ITEM NO.	 Leader Of Industry	
DESIGN UNITS	SIZE	X.±.012(0.30)	X'.±5'	FRANK	28/JUN/13	FWF42007-SXXB22TK	FWF42007		
Inch (metric)	A4	X.X±.008(0.20)	.X'±2'	JACOB	28/JUN/13	TITLE Wire to Board (Wafer) Pitch 4.2mm 90° Angle (DIP)			
SCALE	SIZE	X.XX±.006(0.15)	.XX'±1'	DRAWN BY	DATE	THIS DRAWING CONTAINS INFORMATION THAT IS PROPRIETARY TO TXGA INDUSTRIAL ELECTRONICS(S.Z)CO.,LTD AND SHOULD NOT BE USED WITHOUT WRITTEN PERMISSION			
5:1	A4	X.XXX±.004(0.10)	.XXX'±0.5'	CHERRY	28/JUN/13				

## X-ON Electronics

Largest Supplier of Electrical and Electronic Components

*Click to view similar products for [Headers & Wire Housings](#) category:*

*Click to view products by [TXGA](#) manufacturer:*

Other Similar products are found below :

[0015917161](#) [0022155065](#) [57102-F02-18ULF](#) [58102-G61-06LF](#) [582553-1](#) [01.001.5753.1](#) [0050291907](#) [02.125.8002.8](#) [609-3404](#) [61062-3](#)  
[CSU011177004](#) [622-0430](#) [622-3653LF](#) [63453-116](#) [636-1030](#) [636-1427](#) [636-3427](#) [636-4007](#) [641938-9](#) [65495-038](#) [65692-001LF](#) [65781-018](#)  
[65781-047](#) [65817-010LF](#) [65817-015LF](#) [67095-007LF](#) [67601157](#) [68631-112](#) [68645-018](#) [699319-000](#) [70.362.1628.0](#) [70-4210](#) [70-4226B](#) [70-](#)  
[4853B](#) [71.350.2428.0](#) [733-134](#) [733-162](#) [760-3052](#) [MHR-64-VUAL](#) [80.063.4001.1](#) [800-90-001-10-001000](#) [801-43-002-10-013000](#)  
[801-43-006-10-002000](#) [803-43-024-10-001000](#) [803-93-012-10-001000](#) [8-1437020-4](#) [819-22-004-30-001101](#) [820-22-006-30-001101](#)  
[820-22-008-30-001101](#) [821-22-002-10-001101](#)