

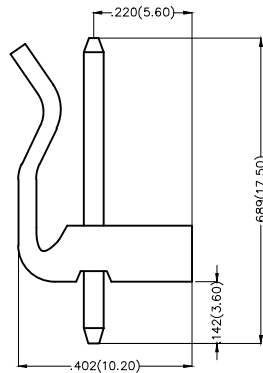
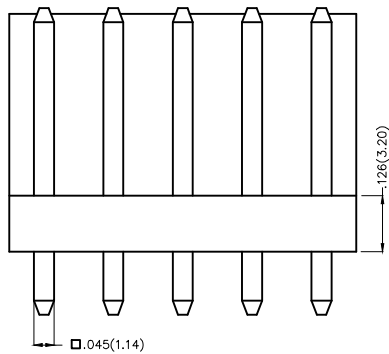
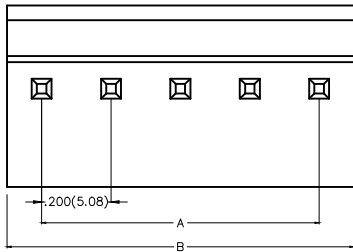
REV	LOCATIONS	DESCRIPTION	DATE	REVISER	APPD

Electrical

Current Rating: 10A AC(rms)/DC
Voltage Rating: 250V AC(rms)/DC
Contact Resistance: 25 mΩ Max
Insulation Resistance: 1000 MΩ MIN
Withstanding Voltage: 1500V AC r.m.s
Temperature Range-Operating: -25°C~+85°C

Material and Plating

Housing: PA66(UL 94V-0)
Contact Pin: Brass
Plating: Tin Plated

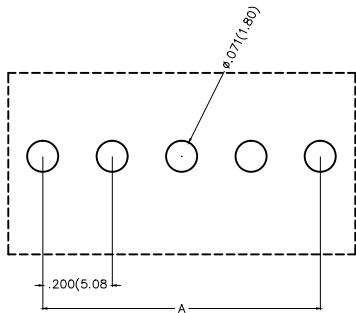


Material and Plating : Housing PA66 UL94V-0 ,Tin Plated.			
Circuits (n)	Part No.	Dimensions(in/mm)	
		A	B
2	FWF50805-S02S22TB	.200(5.08)	.400(10.16)
3	FWF50805-S03S22TB	.400(10.16)	.600(15.24)
4	FWF50805-S04S22TB	.600(15.24)	.800(20.32)
5	FWF50805-S05S22TB	.800(20.32)	1.000(25.40)
6	FWF50805-S06S22TB	1.000(25.40)	1.200(30.48)
7	FWF50805-S07S22TB	1.200(30.48)	1.400(35.56)
8	FWF50805-S08S22TB	1.400(35.56)	1.600(40.64)
9	FWF50805-S09S22TB	1.600(40.64)	1.800(45.72)
10	FWF50805-S10S22TB	1.800(45.72)	2.000(50.80)
11	FWF50805-S11S22TB	2.00(50.80)	2.200(55.88)
12	FWF50805-S12S22TB	2.20(55.88)	2.400(60.96)


Ordering Information

FWF 508 05 — S XX S 2 2 T B
1 2 3 4 5 6 7 8 9 10

1 Category FWF-Wafer	2 Series Number 508-Pitch5.08mm	3 Distinction No. 05	4 Row Option Single Row	5 Circuits XX	6 Entry Angle S-180° Vertical
7 Plating 2-Tin Plated	8 Material-Resin 2-PA66	9 Color-Resin T-Transparent	10 Packaging B-PE Bag		



Recommended P.C.Board Layout

THIRD ANGLE PROJECTION	GENERAL TOLERANCES (UNLESS SPECIFIED)		APPROVE BY FRANK	DATE 28/JUN/13	PART NO. FWF50805-SXXS22TB	ITEM NO. FWF50805	 Leader Of Industry
	DESIGN UNITS Inch (metric)	X.±.012(0.30) X.±5'	CHECKED BY JACOB	DATE 28/JUN/13	TITLE Wire to Board (Wafer) Pitch 5.08mm 180° Vertical (DIP)		
SCALE 5:1	SIZE A4	X.XX±.006(0.15) .XX±1'	DRAWN BY CHERRY	DATE 28/JUN/13	THIS DRAWING CONTAINS INFORMATION THAT IS PROPRIETARY TO TXGA INDUSTRIAL ELECTRONICS(S.Z)CO.,LTD AND SHOULD NOT BE USED WITHOUT WRITTEN PERMISSION		

X-ON Electronics

Largest Supplier of Electrical and Electronic Components

Click to view similar products for [Headers & Wire Housings](#) category:

Click to view products by [TXGA](#) manufacturer:

Other Similar products are found below :

[57102-F02-18ULF](#) [58102-G61-06LF](#) [582553-1](#) [009176003701906](#) [01.001.5753.1](#) [0050291907](#) [02.125.8002.8](#) [609-3404](#) [61062-3](#)
[CSU011177004](#) [622-0430](#) [622-3653LF](#) [63453-116](#) [636-1030](#) [636-1427](#) [636-3427](#) [636-4007](#) [641938-9](#) [644827-2](#) [65495-038](#) [65692-001LF](#)
[65781-018](#) [65781-047](#) [65817-010LF](#) [65817-015LF](#) [66207-023LF](#) [67095-007LF](#) [67601157](#) [68631-112](#) [68645-018](#) [699319-000](#)
[M90C108951C](#) [70.362.1628.0](#) [70-4210](#) [70-4226B](#) [70-4853B](#) [707-5028](#) [71.350.2428.0](#) [71961-016LF](#) [733-134](#) [733-162](#) [754199-000](#) [760-](#)
[3052](#) [80.063.4001.1](#) [800-90-001-10-001000](#) [800-90-010-10-002000](#) [801-43-002-10-013000](#) [801-43-006-10-002000](#) [803-41-018-10-001000](#)
[803-43-024-10-001000](#)