

| REV | LOCATIONS | DESCRIPTION | DATE | REVISED | APPD |
|-----|-----------|-------------|-----------|---------|--------|
| 1 | △ | Size change | 17/JUL/19 | KATE | CHERRY |

Electrical

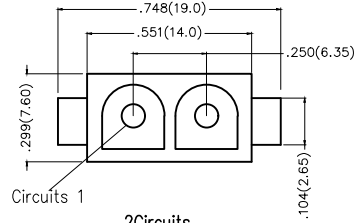
Current Rating: 10A AC(rms)/DC
Voltage Rating: 600V AC(rms)/DC
Contact Resistance: 10 mΩ Max
Insulation Resistance: 1000 MΩ MIN
Withstanding Voltage: 5000V AC r.m.s
Temperature Range—Operating: -25°C ~ +85°C
Material and Plating
Housing: PA66(UL 94V-0)
Contact Pin: Brass
Plating: Tin Plated

| Circuits (n) | Part No. | Dimensions(in./mm) | |
|--------------|-------------------|--------------------|--|
| | | A | |
| 2 | FWF63501-S02S22TB | .250(6.35) | |
| 3 | FWF63501-S03S22TB | .500(12.70) | |
| 4 | FWF63501-S04S22TB | .750(19.05) | |
| 5 | FWF63501-S05S22TB | 1.00(25.40) | |

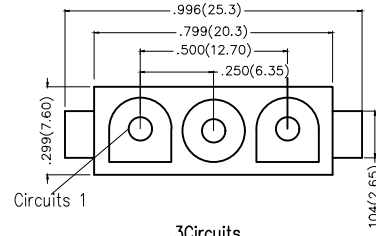
1 2 3 4 5 6 7 8

A

A



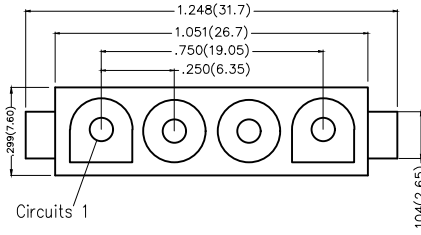
2Circuits



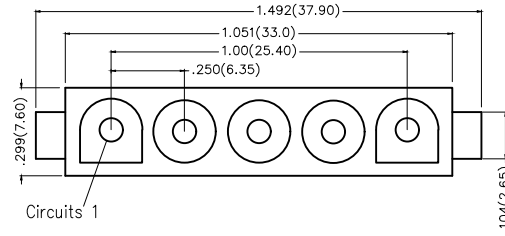
3Circuits

B

B



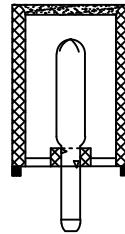
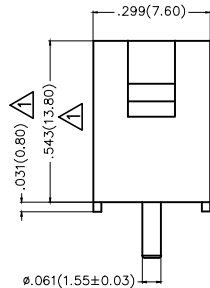
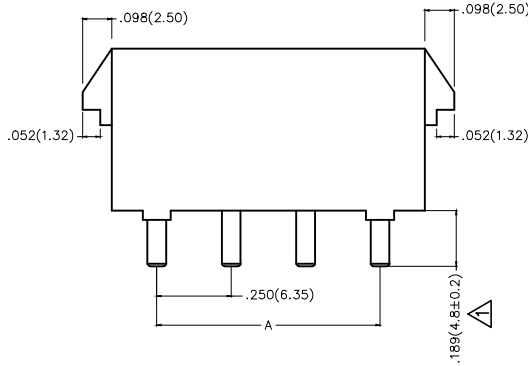
4Circuits



5Circuits

C

C



D

D

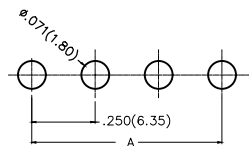
Ordering Information

FWF 635 01 - S XX S 2 2 T B
1 2 3 4 5 6 7 8 9 10

| | | | | | |
|---------------------------|------------------------------------|--------------------------------|----------------------------|------------------|---------------------------------|
| 1 Category FWF-Wafer | 2 Series Number 635-Pitch6.35mm | 3 Distinction No. 01 | 4 Row Option Single Row | 5 Circuits XX | 6 Entry Angle S-180°Vertical |
| 7 Plating 2-Tin Plated | 8 Material-Resin 2-PA66 | 9 Color-Resin T-Transparent | 10 Packaging B-PE Bag | | |

E


E



Recommended P.C.Board Layout

F

F

| THIRD ANGLE PROJECTION | | GENERAL TOLERANCES (UNLESS SPECIFIED) | | APPROVE BY | DATE | PART NO. | ITEM NO. |  Leader Of Industry |
|-------------------------------|------------------|---------------------------------------|---------|------------|-----------|--|----------|---|
| DESIGN UNITS Inch (metric) | X.±.012(0.30) | X.±5° | | FRANK | 28/JUN/13 | FWF63501-SXXS22TB | FWF63501 | |
| | X.X±.008(0.20) | .X'±2' | | CHECKED BY | DATE | TITLE Wire to Board (Wafer) Pitch 6.35mm 180° Vertical (DIP) | | |
| | SCALE 5:1 | X.XX±.006(0.15) | .XX'±1" | | JACOB | 28/JUN/13 | | |
| | X.XXX±.004(0.10) | .XXX'±0.5" | | DRAWN BY | DATE | | | |
| | | | | CHERRY | 28/JUN/13 | | | |

1 2 3 4 5 6 7 8

X-ON Electronics

Largest Supplier of Electrical and Electronic Components

Click to view similar products for [Headers & Wire Housings](#) category:

Click to view products by [TXGA](#) manufacturer:

Other Similar products are found below :

[0015917161](#) [0022155065](#) [57102-F02-18ULF](#) [58102-G61-06LF](#) [582553-1](#) [01.001.5753.1](#) [0050291907](#) [02.125.8002.8](#) [609-3404](#) [61062-3](#)
[CSU011177004](#) [622-0430](#) [622-3653LF](#) [63453-116](#) [636-1030](#) [636-1427](#) [636-3427](#) [636-4007](#) [641938-9](#) [65495-038](#) [65692-001LF](#) [65781-018](#)
[65781-047](#) [65817-010LF](#) [65817-015LF](#) [67095-007LF](#) [67601157](#) [68631-112](#) [68645-018](#) [699319-000](#) [70.362.1628.0](#) [70-4210](#) [70-4226B](#) [70-](#)
[4853B](#) [71.350.2428.0](#) [733-134](#) [733-162](#) [760-3052](#) [MHR-64-VUAL](#) [80.063.4001.1](#) [800-90-001-10-001000](#) [801-43-002-10-013000](#)
[801-43-006-10-002000](#) [803-43-024-10-001000](#) [803-93-012-10-001000](#) [8-1437020-4](#) [819-22-004-30-001101](#) [820-22-006-30-001101](#)
[820-22-008-30-001101](#) [821-22-002-10-001101](#)