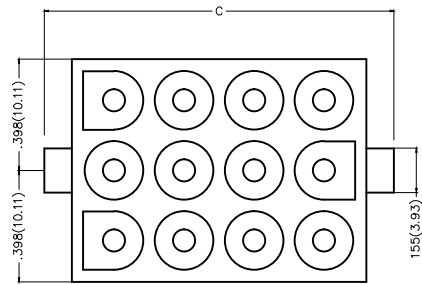
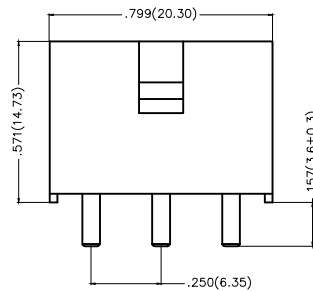
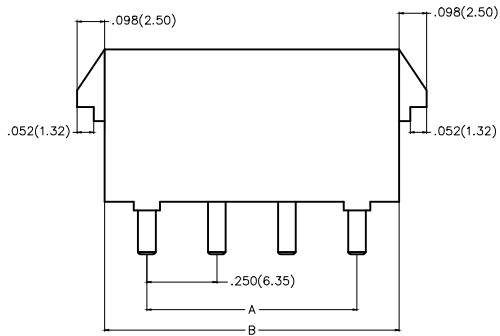


REV	LOCATIONS	DESCRIPTION	DATE	REVISER	APPD



Electrical
 Current Rating: 10A AC(rms)/DC
 Voltage Rating: 600V AC(rms)/DC
 Contact Resistance: 10 mΩ Max
 Insulation Resistance: 1000 MΩ MIN
 Withstanding Voltage: 5000V AC r.m.s
 Temperature Range—Operating: -25°C ~ +85°C
Material and Plating
 Housing: PA66(UL 94V-0)
 Contact Pin: Brass
 Plating: Tin Plated

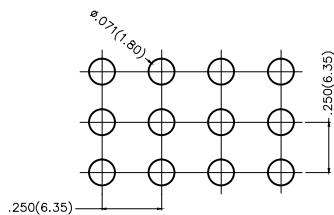
Material and Plating : Housing PA66 UL94V-0 , Tin-Plated.				
Circuits (n)	Part No.	Dimensions(in/mm)		
		A	B	C
9	FWF63503-T09S22TB	.500(12.70)	.799(20.30)	.996(25.30)
12	FWF63503-T12S22TB	.750(19.05)	1.051(26.70)	1.248(31.70)
15	FWF63503-T15S22TB	.100(25.40)	1.299(33.00)	1.496(38.00)



Ordering Information

FWF 635 03 — T XX S 2 2 T B
 1 2 3 4 5 6 7 8 9 10

1	Category FWF—Wafer	2	Series Number 635—Pitch 6.35mm	3	Distinction No. 03	4	Row Option Triple Row	5	Circuits XX	6	Entry Angle S—180° Vertical
7	Plating 2—Tin Plated	8	Material—Resin 2—PA66	9	Color—Resin T—Transparent	10	Packaging B—PE Bag				



Recommended P.C.Board Layout

 THIRD ANGLE PROJECTION	GENERAL TOLERANCES (UNLESS SPECIFIED)		APPROVE BY FRANK	DATE 28/JUN/13	PART NO. FWF63503-TXXS22TB	ITEM NO. FWF63503	 Leader Of Industry	
	DESIGN UNITS Inch (metric)	X.±.012(0.30)	X.±5°	CHECKED BY JACOB	DATE 28/JUN/13	TITLE Wire to Board (Wafer) Pitch 6.35mm 180° Vertical (DIP)		REV 0
SCALE 5:1	SIZE A4	X.XX±.006(0.15)	.XX'±1°	DRAWN BY CHERRY	DATE 28/JUN/13	THIS DRAWING CONTAINS INFORMATION THAT IS PROPRIETARY TO TXGA INDUSTRIAL ELECTRONICS(S.Z)CO.,LTD AND SHOULD NOT BE USED WITHOUT WRITTEN PERMISSION		

X-ON Electronics

Largest Supplier of Electrical and Electronic Components

Click to view similar products for [Headers & Wire Housings](#) category:

Click to view products by [TXGA](#) manufacturer:

Other Similar products are found below :

[0015917161](#) [0022155065](#) [57102-F02-18ULF](#) [58102-G61-06LF](#) [582553-1](#) [01.001.5753.1](#) [0050291907](#) [02.125.8002.8](#) [609-3404](#) [61062-3](#)
[CSU011177004](#) [622-0430](#) [622-3653LF](#) [63453-116](#) [636-1030](#) [636-1427](#) [636-3427](#) [636-4007](#) [641938-9](#) [65495-038](#) [65692-001LF](#) [65781-018](#)
[65781-047](#) [65817-010LF](#) [65817-015LF](#) [67095-007LF](#) [67601157](#) [68631-112](#) [68645-018](#) [699319-000](#) [70.362.1628.0](#) [70-4210](#) [70-4226B](#) [70-](#)
[4853B](#) [71.350.2428.0](#) [733-134](#) [733-162](#) [760-3052](#) [MHR-64-VUAL](#) [80.063.4001.1](#) [800-90-001-10-001000](#) [801-43-002-10-013000](#)
[801-43-006-10-002000](#) [803-43-024-10-001000](#) [803-93-012-10-001000](#) [8-1437020-4](#) [819-22-004-30-001101](#) [820-22-006-30-001101](#)
[820-22-008-30-001101](#) [821-22-002-10-001101](#)