



EVK-SARA-R52

SARA-R52 series cellular evaluation kits

User guide



Abstract

This guide explains how to set up the EVK-SARA-R52 evaluation kits to begin evaluating the u-blox SARA-R52 series modules based on the latest u-blox UBX-R5 cellular chipset and supporting multi-band LTE-M / NB-IoT cellular radio access technology and the u-blox's leading GNSS technology.

Document information

| | | |
|-------------------------------|--|-------------|
| Title | EVK-SARA-R52 | |
| Subtitle | SARA-R52 series cellular evaluation kits | |
| Document type | User guide | |
| Document number | UBX-23006467 | |
| Revision and date | R01 | 06-Jun-2023 |
| Disclosure restriction | C1-Public | |

This document applies to the following products:

| Product name | Type number |
|---------------------|------------------------|
| EVK-SARA-R520 | EVK-SARA-R520-02-00 |
| EVK-SARA-R520M10 | EVK-SARA-R520M10-02-00 |

u-blox or third parties may hold intellectual property rights in the products, names, logos and designs included in this document. Copying, reproduction, modification or disclosure to third parties of this document or any part thereof is only permitted with the express written permission of u-blox.

The information contained herein is provided "as is" and u-blox assumes no liability for its use. No warranty, either express or implied, is given, including but not limited to, with respect to the accuracy, correctness, reliability and fitness for a particular purpose of the information. This document may be revised by u-blox at any time without notice. For the most recent documents, visit www.u-blox.com.

Copyright © u-blox AG.

Contents

| | |
|--|----|
| Document information..... | 2 |
| Contents | 3 |
| 1 Introduction..... | 4 |
| 2 Board quick start | 5 |
| 3 Register to network | 9 |
| 4 Setting up cellular packet data connection on Windows..... | 10 |
| 5 EVK-SARA-R52 hardware..... | 13 |
| Appendix | 21 |
| A Setting up AT terminal communication..... | 21 |
| B Glossary | 23 |
| C Declaration of conformities..... | 24 |
| Related documentation | 24 |
| Revision history | 24 |
| Contact..... | 24 |

1 Introduction

The EVK-SARA-R52 kit is a powerful and easy-to-use tool that simplifies the evaluation of the u-blox SARA-R5 series LTE-M / NB-IoT cellular modules.

The following evaluation kits are available with u-blox SARA-R52 series cellular modules:

- The EVK-SARA-R520 evaluation kit, for evaluation of SARA-R520-02B
- The EVK-SARA-R520M10 evaluation kit, for evaluation of SARA-R520M10-02B

All evaluation kits are referred to as EVK-SARA-R52, as they are the same in the related variants, except for the specific module product variant installed on it, with possible related parts.

See the SARA-R52 series data sheet [\[2\]](#) and the SARA-R52 series system integration manual [\[3\]](#) for features supported by each SARA-R5 series module product version.

As shown in [Figure 1](#), the EVK-SARA-R52 evaluation kit is formed by three boards:

- The EVB-WL3 contains the power supply and other peripherals for the cellular module.
- The cellular adapter board, ADP-SARA-R52, contains the SARA-R52 series cellular module and other connectors.
- The GNSS adapter board, ADP-GNSS, contains the u-blox MAX-M10S GNSS module, the GNSS antenna connector and the USB connector for the GNSS module.

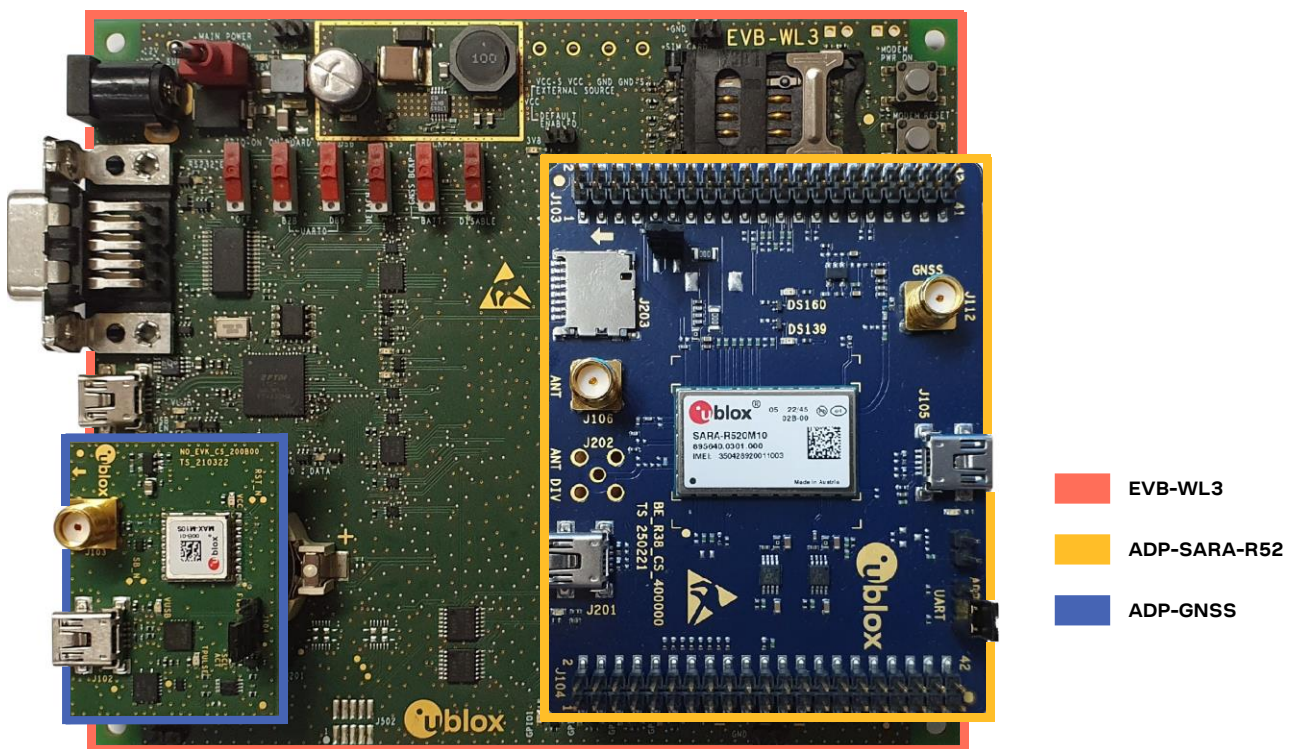


Figure 1: EVK-SARA-R52 evaluation kit formed by three boards

For more hardware details about the EVK-SARA-R52 evaluation kit, see [section 5](#).

2 Board quick start

2.1 Board setup

2.1.1 SIM and antenna

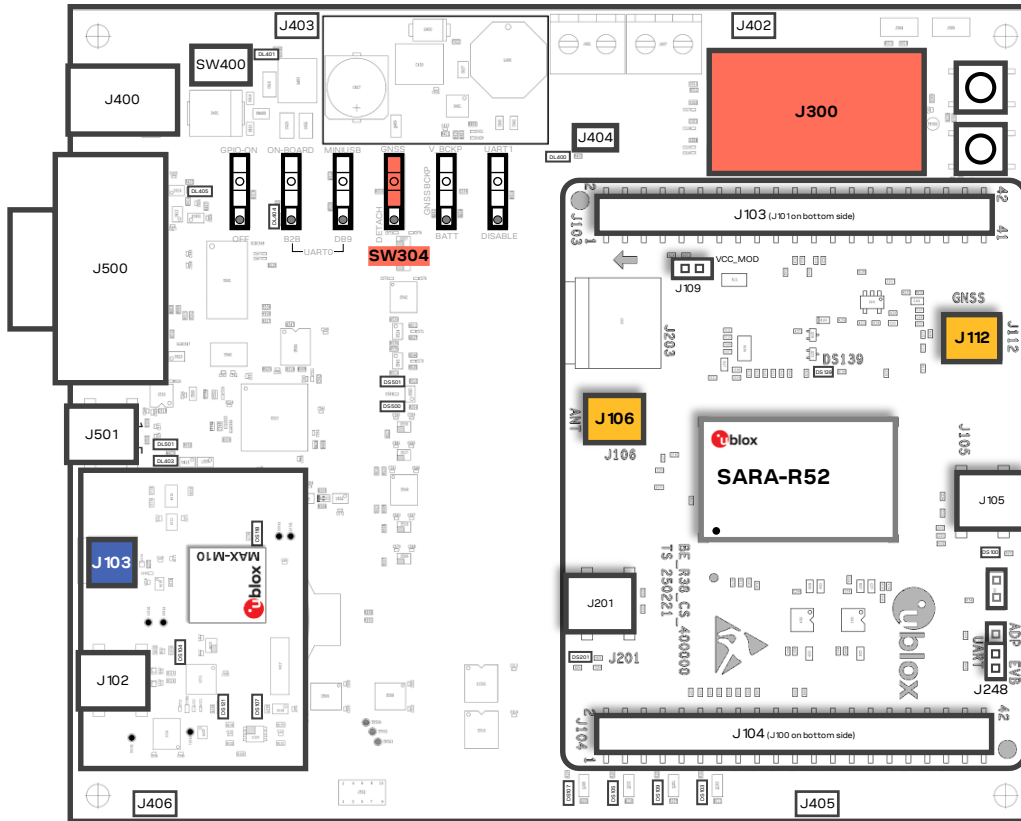


Figure 2: SIM and antenna set up

1. Insert a SIM card into **J300**, the SIM card holder;
2. Connect the cellular antenna provided with the EVK-SARA-R52 evaluation kit box to **J106**, the cellular antenna SMA connector;
3. If the GNSS functionality is required:
 - a. For EVK-SARA-R520M10, connect the GNSS antenna provided with the EVK-SARA-R52 evaluation kit box to **J112**, the GNSS antenna SMA connector on ADP-SARA-R52;
 - b. For EVK-SARA-R520:
 - i. For u-blox SpotNow A-GPS receiver functionalities, connect the GNSS antenna provided with the EVK-SARA-R52 evaluation kit box to **J112**, the GNSS antenna SMA connector on ADP-SARA-R52;
 - ii. For MAX-M10S GNSS module functionalities, connect the GNSS antenna provided with the EVK-SARA-R52 evaluation kit box to **J103**, the GNSS antenna SMA connector on ADP-GNSS, and keep the cellular GNSS detach switch **SW304** in “GNSS” position;
4. Place the GNSS antenna in a location with a good view of the sky.

2.1.2 Power supply

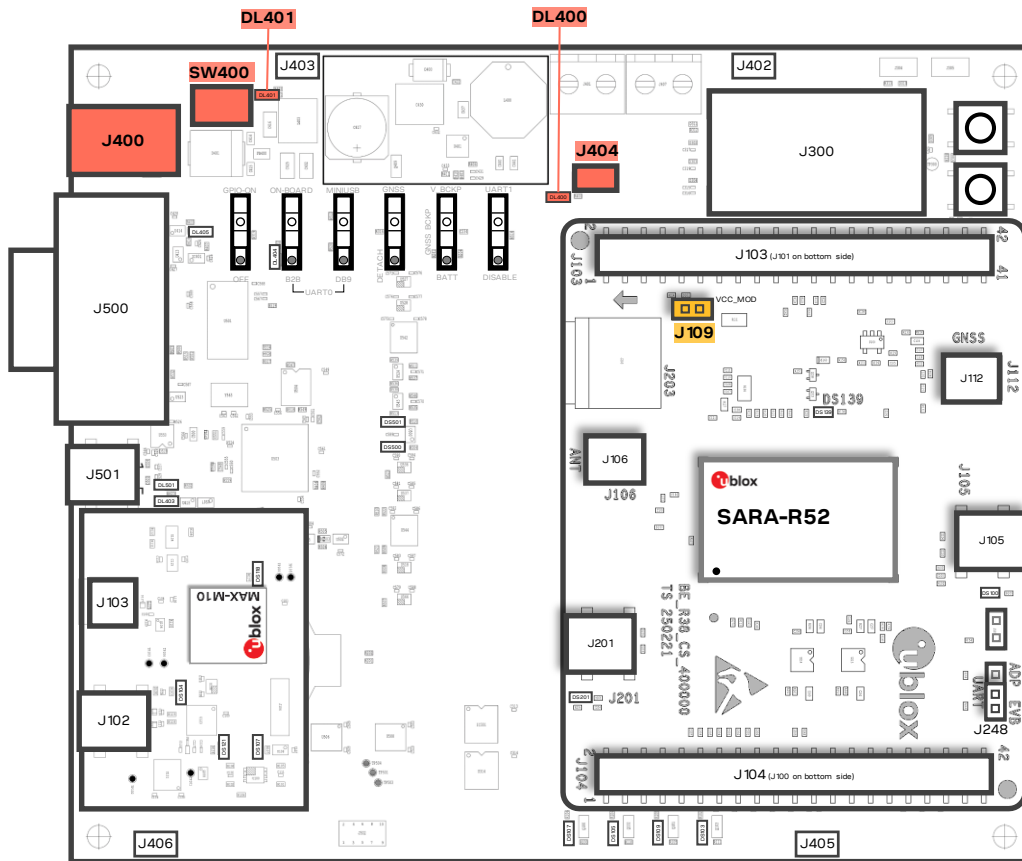


Figure 3: Power supply set up

1. Connect the AC/DC +12 V power supply adapter to **J400**, the 9 – 18 V power input connector; LED **DL401** light turns blue;
2. Provide a jumper socket on both **J404** and **J109**, the cellular VCC supply jumpers;
3. Turn **SW400**, the main power switch to the “ON” position; LED **DL400** light turns green and the cellular module switches on.

2.1.3 Local connectivity

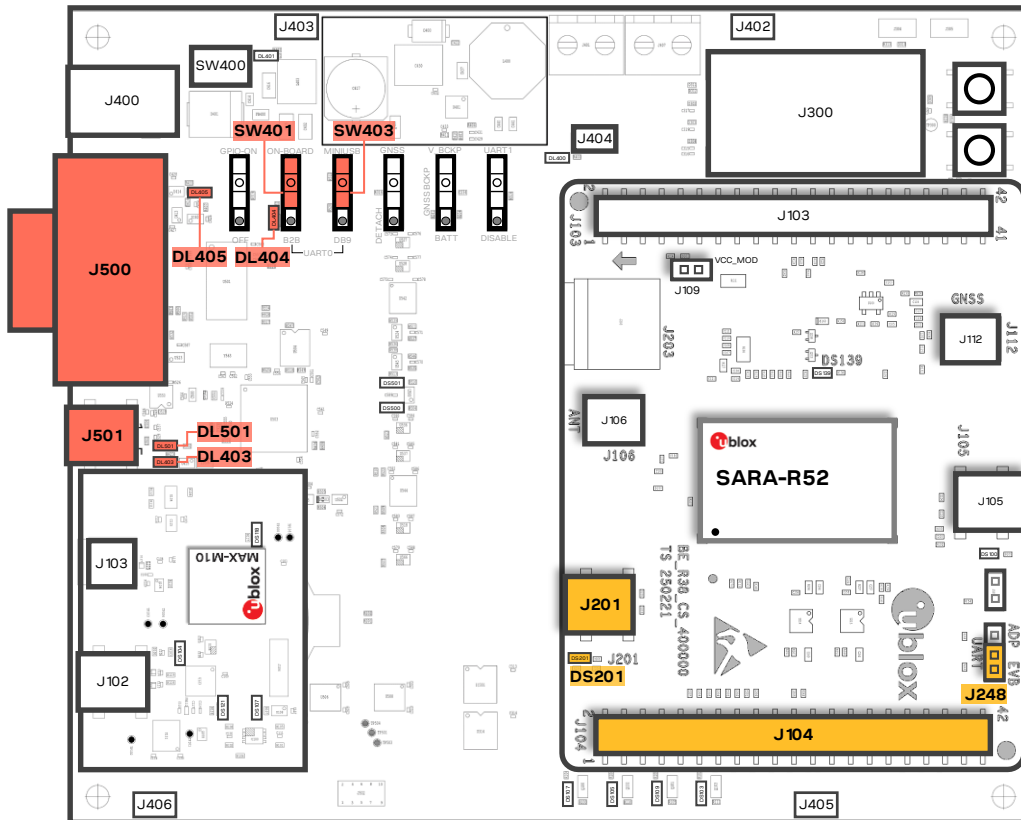



Figure 4: Local connectivity set up

For communication via the UART interfaces, the following connections are allowed and can be alternatively enabled in a mutually exclusive way (see [Table 1](#) for switches and jumper position and LED status):

- a. Connect a USB cable to **J501** (mini-USB), the cellular USB main UART; the LED **DL501** light turns blue. When a USB cable is connected to this mini-USB connector, two COM ports are enabled in Windows: the main 8-wire UART interface of the cellular system is available over the first COM port opened by the driver, after the end of the cellular system boot once the cellular system is switched on.
- b. Connect an RS232 cable to **J500**, the cellular RS232 main UART, a DB9 connector: the main 8-wire UART interface of the cellular system is available over RS232, after the cellular system boot once the cellular system is switched on.
- c. Connect a USB cable to **J201** (mini-USB), the cellular USB two UARTs; the LED **DS201** light turns blue. When a USB cable is connected to this mini-USB connector, two COM ports are enabled in Windows: the two 4-wire UART interfaces of the cellular system are respectively available over the two numbered COM ports opened by the driver, after the end of the cellular system boot once the cellular system is switched on (to enable two UART interfaces, see the AT commands manual [\[1\]](#), +USIO AT command).

| Type of connections | SW401 | SW403 | J248 | LED |
|---|----------|-------------|---------------------------|----------------|
| Access to the main UART interface over J501 (EVB-WL3) | ON BOARD | MINIUSB | Jumper socket on pins 1-2 | DL403 DL501 |
| Access to the main UART interface over J500 (EVB-WL3) | ON BOARD | DB9 | Jumper socket on pins 1-2 | DL405 |
| Access to the two UART interfaces over J201 (ADP-SARA-R52) | B2B | Do not care | Jumper socket on pins 2-3 | DL404 DS201 |
| Access to UART(s) interface(s) over J104 (ADP-SARA-R52) | B2B | Do not care | No jumper socket | DL404 |

Table 1: Serial interface configuration

 See the SARA-R52 series data sheet [2] and the +USIO AT command description in the SARA-R5 series AT commands manual [1] for the description and configuration of the USIO variants.


Run an AT terminal application (such as the u-blox m-center tool) selecting the AT port, with these settings:

| Data rate | Data bits | Parity | Stop bits | Flow control |
|--------------|-----------|--------|-----------|--------------|
| 115200 bit/s | 8 | N | 1 | HW |

See appendix A for how to configure the u-blox m-center AT terminal for Windows.

2.2 Switch off the cellular system

To switch off the cellular system in the EVK-SARA-R52, send the +CPWROFF AT command.

 Issue AT+CPWROFF command before switching off the main power supply, otherwise settings and configuration parameters may not be saved in the non-volatile memory of the cellular module.

3 Register to network

3.1 Enabling error result codes

| Command sent by DTE (user) | DCE response (module) | Description |
|----------------------------|-----------------------|--|
| AT+CMEE=2 | OK | Enable the cellular module to report verbose error result codes. |

3.2 PIN code insertion (when required)

| Command sent by DTE (user) | DCE response (module) | Description |
|----------------------------|-----------------------|--|
| AT+CPIN="8180" | OK | Enter the PIN code, if needed (enter the PIN of the SIM card – 8180 is an example). |
| AT+CLCK="SC",0,"8180" | OK | Unlock the PIN at power-on (the last parameter is the PIN of the SIM card – 8180 is an example). |
| AT+CLCK="SC",1,"8180" | OK | Lock the PIN at power-on (the last parameter is the PIN of the SIM card – 8180 is an example). |

3.3 Registration on a cellular network

| Command sent by DTE (user) | DCE response (module) | Description |
|----------------------------|--|---|
| AT+CREG? | +CREG: 0,1 OK | Verify the CS network registration. |
| AT+CEREG? | +CEREG: 0,1,"5684","03761b14",7 OK | Verify the EPS network registration. |
| AT+COPS=0 | OK | Register the module on the network. The cellular module automatically registers itself on the cellular network. This command is necessary only if the auto-registration failed (AT+CREG? returns 0,0). |
| AT+COPS? | +COPS: 0,0,"I TIM",7 OK | Read the operator name and radio access technology (RAT). |

For the complete description and syntax of the AT commands supported by SARA-R52 series modules, see the SARA-R5 series AT commands manual [\[1\]](#).

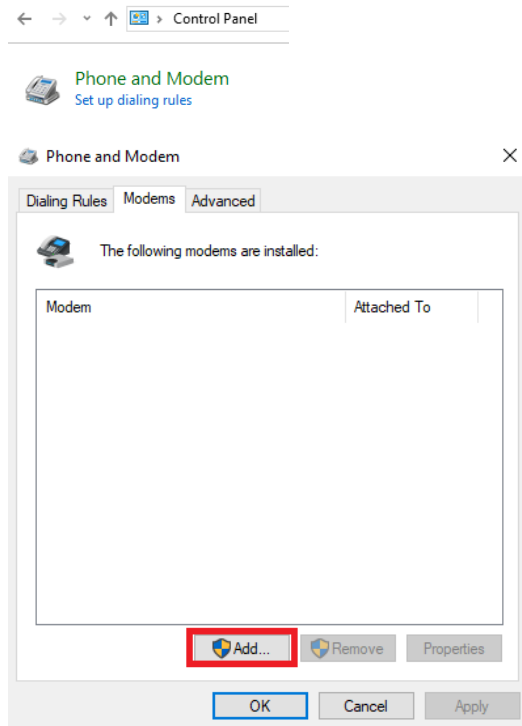
4 Setting up cellular packet data connection on Windows

This section describes how to set up a packet data connection on Windows 10 using the operating system's TCP/IP stack and EVK-R5. This is also referred to as a dial-up connection.

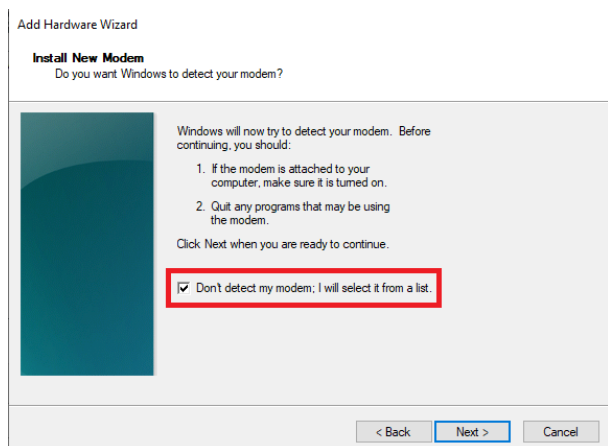
4.1 Install a new modem from the control panel

1. From **Control Panel**, select **Phone and Modem > Modems > Add**.

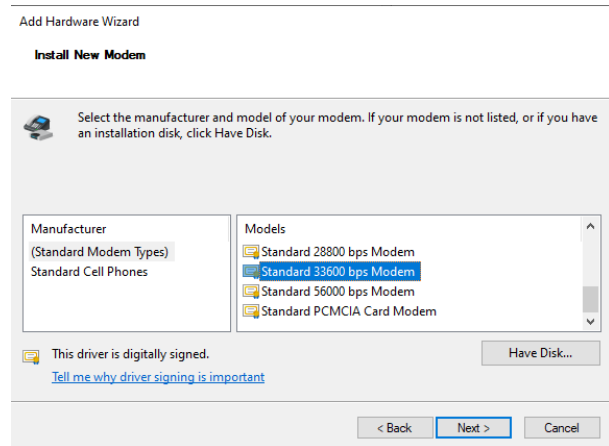
This opens the Add Hardware Wizard.



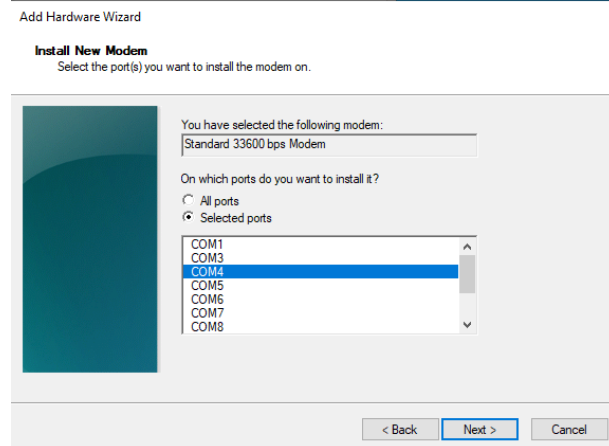
2. Tick "Don't detect my modem" checkbox. Click **Next**.



3. Select **Standard 33600 bps Modem**.
Click **Next**.



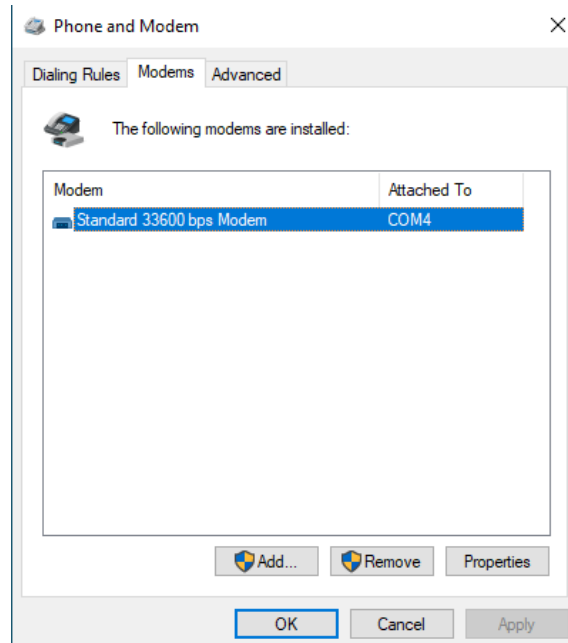
4. Select **COM** port for data communication and click **Next**. The modem will be installed on this COM port.



5. Click **Finish** to complete the installation.

6. Now the new modem is visible in **Control Panel**, under **Phone and Modem > Modems**.

Any extra initialization AT command (e.g., to set a specific APN name) can be entered by selecting **Properties** and filling in **Advanced > Extra initialization commands** text box.

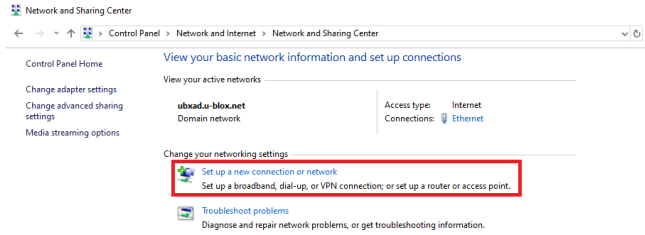


Now the module is ready and the connection can be configured.

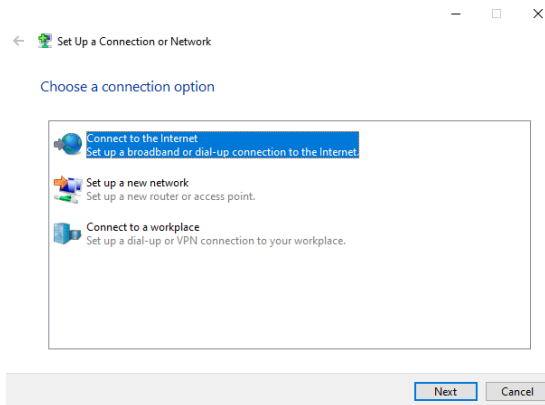
The modem configuration can also be edited in **Device Manager**, by clicking on the modem name.

4.2 Configuring a new connection

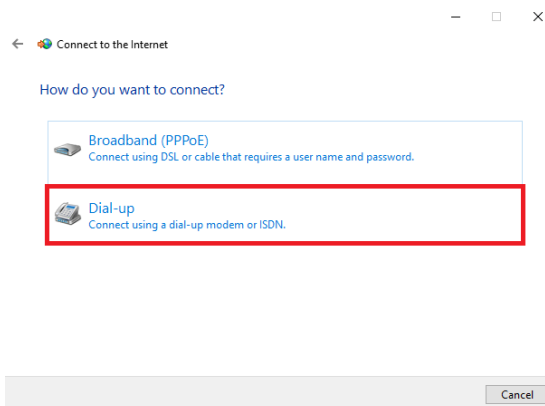
1. From **Control Panel**, select **Network and Sharing Center** > **Set up a new connection or network**.



2. Click **Connect to the Internet** and then **Next**.

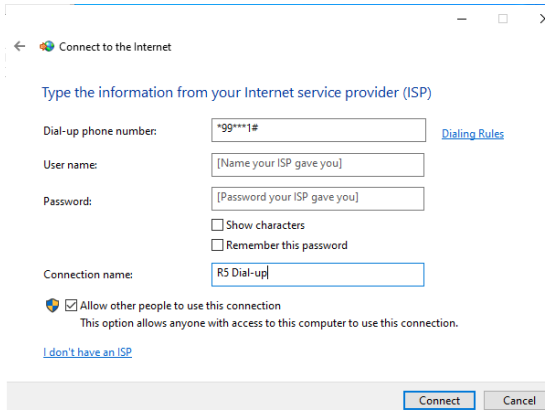


3. Select **Dial-up** and, if requested, the modem previously installed.



4. Enter the parameters for the dial-up connection:

- The module telephone number:
*99***1#
(change if using a PDP context different from 1)
- The specific account information for the network operator
- A name for the connection (e.g., "R5 Dial-up")



The packet data connection is now ready to be used with EVK-SARA-R52. Click **Connect** to start the connection, then start a browser to check internet connectivity.

Consult the cellular network operator for username and password. In most cases, they can be left empty.

5 EVK-SARA-R52 hardware

5.1 EVK-SARA-R52 block diagram and basic description

Figure 5 shows the main interfaces and internal connections of the EVK-SARA-R52 evaluation kit:

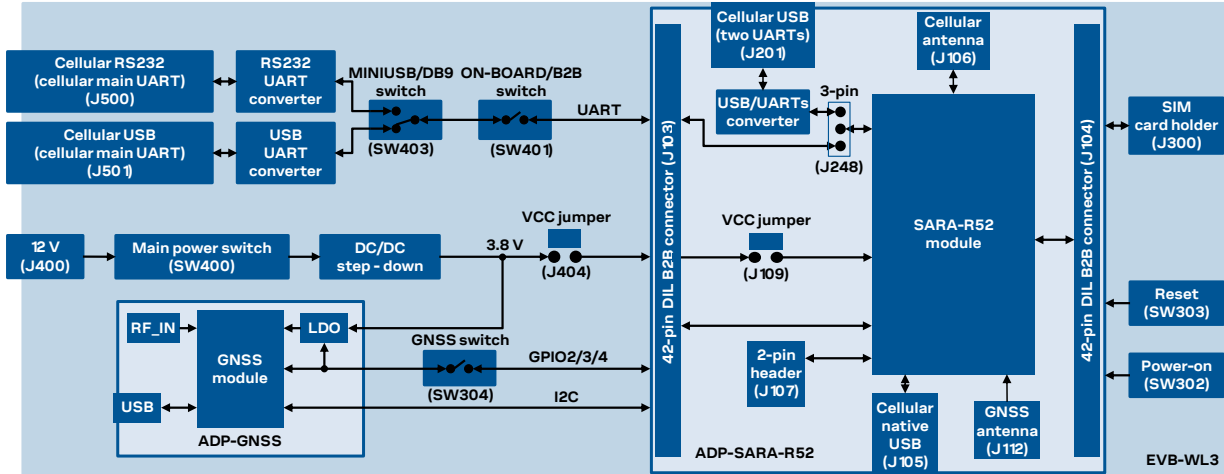


Figure 5: Block diagram of EVK-SARA-R52

The ADP-SARA-R52 and the ADP-GNSS are connected by male header board-to-board connectors on the bottom of the adapter boards and their corresponding female connectors on top of the EVB-WL3.

If the on-board / B2B switch (SW401) on the EVB-WL3 board is set to “ON-BOARD” and if a jumper socket is inserted on the pin 1 and pin 2 of the 3-pin header J248 on the cellular adapter board (see Figure 6), then the main UART interface of the SARA-R52 series module, routed through the DIL header board-to-board connectors mounted on the bottom of the cellular adapter board, can be accessed as converted to USB interface on the USB connector (J501) on the EVB-WL3 board, or it can be accessed as converted to RS232 interface on the RS232 DB9 connector (J500) on the EVB-WL3 board, according to the mini-USB / DB9 switch (SW403) setting.

If the on-board / B2B switch (SW401) on the EVB-WL3 board is set to “B2B” and if a jumper socket is inserted on the pin 2 and pin 3 of the 3-pin header J248 on the cellular adapter board (see Figure 6), the UART interfaces of SARA-R52 series module can be accessed as USB interfaces on the USB connector (J201) on the cellular adapter board.

If the on-board / B2B switch (SW401) on the EVB-WL3 board is set to “B2B” and if there is no jumper socket inserted on the 3-pin header J248 on the cellular adapter board (see Figure 6), then the UART interface(s) of the SARA-R52 series module can be accessed at 1.8 V CMOS signal levels on the DIL header connector mounted on the top of the cellular adapter board, to communicate, for example, with an external MCU.

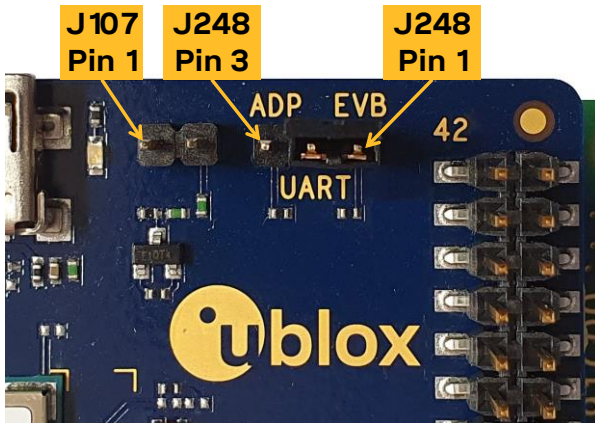


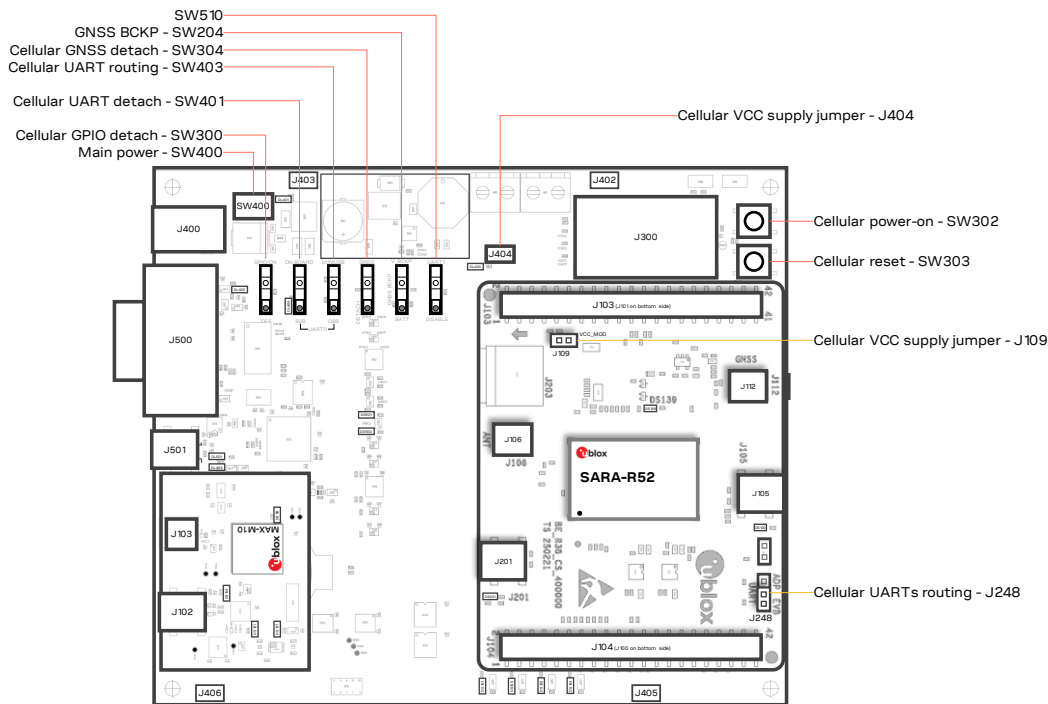
Figure 6: 3-pin header J248 available to set the routing of the UART interfaces

The USB interface of the cellular module (available for diagnostic purpose only) is available on the native USB connector (J105) mounted on the cellular adapter board.

Other SARA-R52 series peripherals are available on the dual-in-line male board-to-board connectors (J103 and J104) and the 2-pin header connector (J107) provided on the top layer of the cellular adapter board.

The lower board (EVB-WL3) is also designed to be used with other u-blox cellular adapter boards. It contains additional switches, jumpers, connectors, LEDs and parts that may be only partially described in this document, because they are intended for use only with other u-blox cellular modules. It is recommended to leave any additional connector unconnected and any additional switch in its default configuration.

5.2 Switches, jumpers and buttons

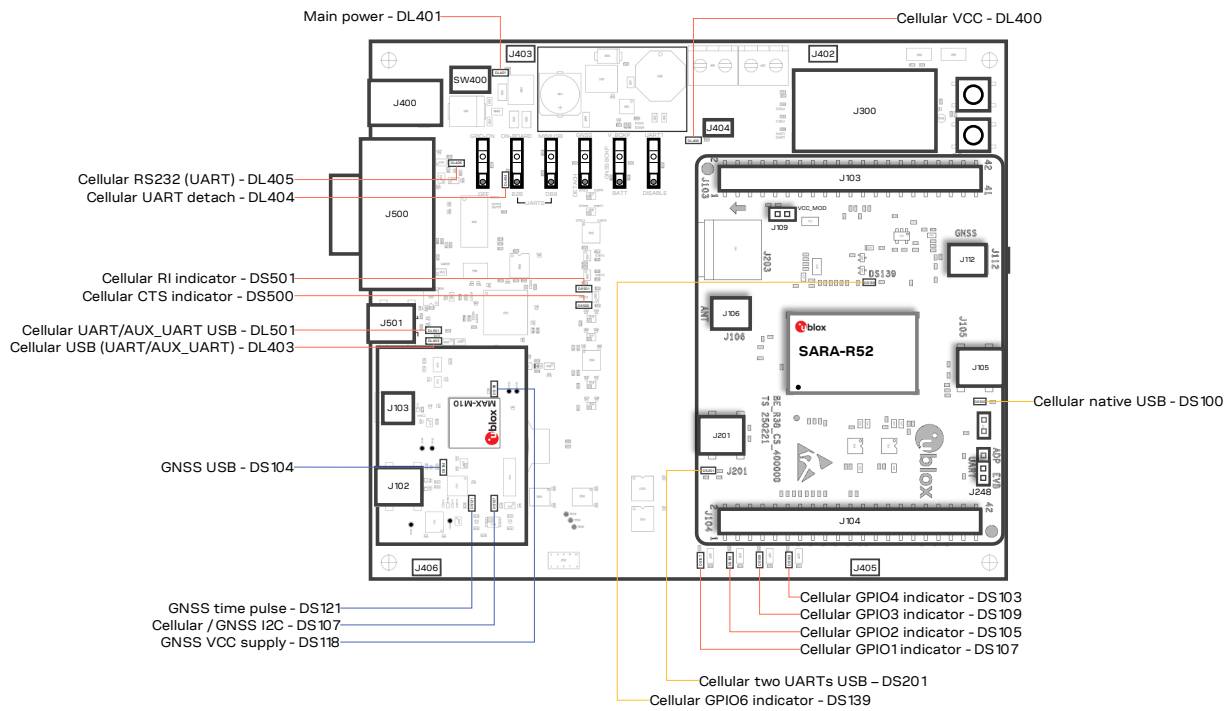


| Function | Description | Name | Board |
|-----------------------------------|--|-------|--------------|
| Main power switch | Power on / off the whole evaluation kit | SW400 | EVB-WL3 |
| Cellular VCC | Jumper socket to provide the 3.8 V supply to the cellular VCC input | J404 | EVB-WL3 |
| | | J109 | ADP-SARA-R52 |
| Cellular power-on | Push button to switch on / off the cellular system | SW302 | EVB-WL3 |
| Cellular reset | Push button to reset the cellular system | SW303 | EVB-WL3 |
| Cellular UART detach | Slide switch to attach / detach cellular UART from USB / RS232 connectors | SW401 | EVB-WL3 |
| Cellular UART routing | Slide switch to select cellular main UART routing on USB or RS232 connector | SW403 | EVB-WL3 |
| Cellular UARTs routing | 3-pin header jumper to route cellular UART(s) interfaces to the USB two UARTs connector on the ADP-SARA-R52, or over the USB or RS232 connectors on the EVB-WL3, or over the DIL B2B connector on the ADP-SARA-R52 | J248 | ADP-SARA-R52 |
| Cellular GPIO detach | Slide switch to attach / detach the cellular GPIOs from peripherals: when detached, the signals are available only on DIL B2B connector on ADP-SARA-R52 board | SW300 | EVB-WL3 |
| Cellular GNSS detach ¹ | Slide switch to attach / detach the cellular system to the GNSS module mounted on the ADP-GNSS: when detached, signals are available only on DIL B2B connector on ADP-SARA-R52 board | SW304 | EVB-WL3 |
| GNSS BCKP | Slide switch to connect / disconnect backup battery to V_BCKP pin of the GNSS module mounted on the ADP-GNSS | SW204 | EVB-WL3 |

Table 2: EVK-SARA-R52 switches, jumpers and buttons description

¹ For EVK-SARA-R520M10 it is recommended to keep this switch in “DETACH” position.

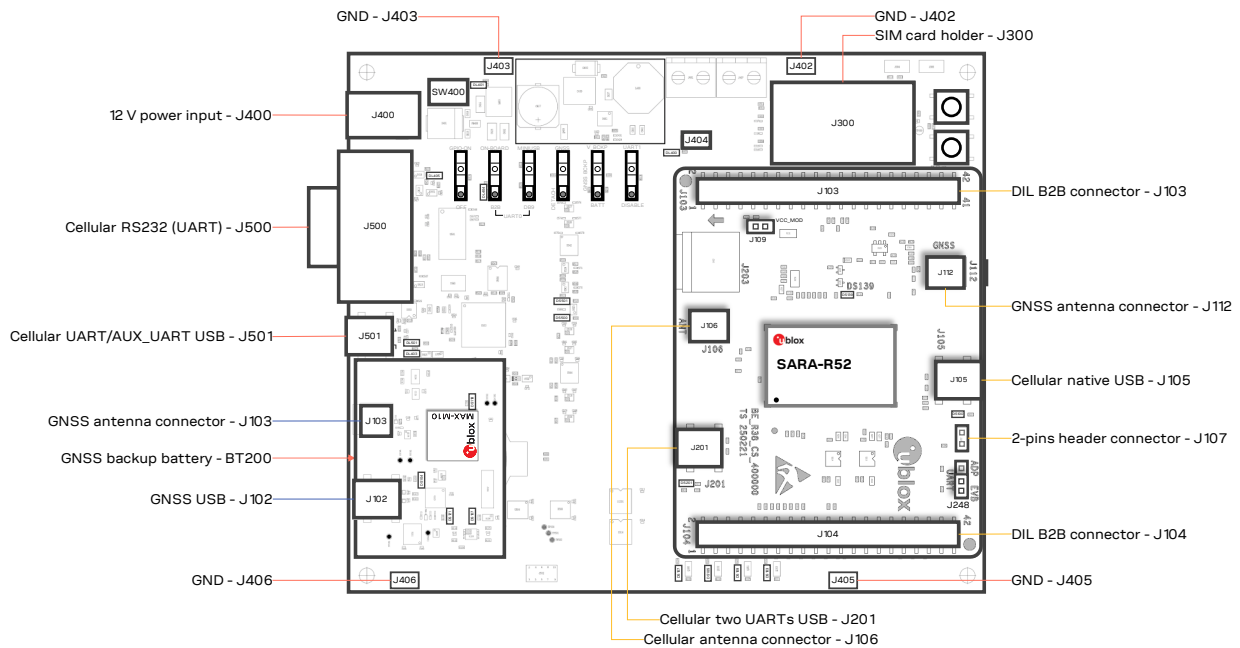
5.3 LEDs



| Function | Color | Description | LED # | Board |
|--------------------------|-------|--|-------|--------------|
| Main power | | Power supply plugged in the 9 - 18 V power input | DL401 | EVB-WL3 |
| Cellular VCC | | Cellular module supplied; main power switch must be switched on | DL400 | EVB-WL3 |
| Cellular USB (UART) | | USB cable plugged in J501 for UART access | DL501 | EVB-WL3 |
| Cellular USB (UART) | | Green light on when UART is routed to J501 Red light blinks at UART TX or RX data on J501 | DL403 | EVB-WL3 |
| Cellular UART detach | | UART signals are available only on ADP-SARA-R52 | DL404 | EVB-WL3 |
| Cellular RS232 (UART) | | Green light on when UART is routed to J500 Red light blinks at UART TX or RX data on J500 | DL405 | EVB-WL3 |
| Cellular RI indicator | | RI line turns ON (active low) | DS501 | EVB-WL3 |
| Cellular CTS indicator | | CTS line turns ON (active low) | DS500 | EVB-WL3 |
| Cellular GPIO1 indicator | | Green light on when cellular GPIO1 is high | DS107 | EVB-WL3 |
| Cellular GPIO2 indicator | | Green light on when cellular GPIO2 is high | DS105 | EVB-WL3 |
| Cellular GPIO3 indicator | | Green light on when cellular GPIO3 is high | DS109 | EVB-WL3 |
| Cellular GPIO4 indicator | | Green light on when cellular GPIO4 is high | DS103 | EVB-WL3 |
| Cellular GPIO6 indicator | | Green light on when cellular GPIO6 is high (e.g., time pulse) | DS139 | ADP-SARA-R52 |
| Cellular native USB | | USB cable plugged in J105 on ADP-SARA-R52 | DS100 | ADP-SARA-R52 |
| Cellular two UARTs USB | | USB cable plugged in J201 on ADP-SARA-R52 | DS201 | ADP-SARA-R52 |
| GNSS VCC supply | | MAX-M10S GNSS module supply is turned on | DS118 | ADP-GNSS |
| GNSS USB | | USB cable plugged in J102 on ADP-GNSS | DS104 | ADP-GNSS |
| GNSS time pulse | | MAX-M10S GNSS time pulse | DS121 | ADP-GNSS |
| Cellular / GNSS I2C | | Cellular / GNSS module communication over the I2C interface | DS107 | ADP-GNSS |

Table 3: EVK-SARA-R52 LEDs description

5.4 Connectors



| Function | Description | Name | Board |
|------------------------|--|--------------------------|--------------|
| 9 - 18 V power input | Connector for the AC / DC power adapter of EVK AC: 100-240 V, 0.8 A, 50-60 Hz / DC: +12 V, 2.5 A | J400 | EVb-WL3 |
| SIM card holder | SIM card holder (mini-SIM 2FF) | J300 | EVb-WL3 |
| Cellular USB (UART) | Mini-USB connector for the cellular UART interface converted as USB interface | J501 | EVb-WL3 |
| Cellular RS232 (UART) | DB9 connector for the cellular UART interface converted as RS232 interface | J500 | EVb-WL3 |
| GNSS backup battery | Backup battery socket for the GNSS module (under ADP-GNSS board) | BT200 | EVb-WL3 |
| GND | Ground terminals for the probe reference | J402, J403 J405, J406 | EVb-WL3 |
| Cellular antenna | SMA connector for the cellular antenna (ANT) | J106 | ADP-SARA-R52 |
| GNSS antenna | SMA connector for the GNSS antenna to be connected to the GNSS RF input of the SARA-R52 series module (ANT_GNSS) | J112 | ADP-SARA-R52 |
| Cellular native USB | Mini-USB connector for the cellular native USB interface | J105 | ADP-SARA-R52 |
| Cellular two UARTs USB | Mini-USB connector for the cellular two UART interfaces converted as USB interfaces | J201 | ADP-SARA-R52 |
| DIL B2B headers | Dual-in-line board-to-board connectors for cellular module interfaces | J103, J104 | ADP-SARA-R52 |
| 2-pin header | Header providing access to some pins of the cellular module | J107 | ADP-SARA-R52 |
| GNSS antenna | SMA connector for the GNSS antenna to be connected to the GNSS RF input of the MAX-M10S GNSS module (RF_IN) | J103 | ADP-GNSS |
| GNSS USB | Mini-USB connector for the GNSS module UART interface converted as USB interface | J102 | ADP-GNSS |

Table 4: EVK-SARA-R52 connectors description

- ⚠ Caution! In the unlikely event of a failure in the internal protection circuitry, there is a risk of an explosion when charging a fully or a partially discharged battery. Replace the battery when it no longer has sufficient charge for unit operation. Check the battery before use if the device has not been used for an extended period.
- ⚠ Caution! Risk of explosion if the battery is replaced with an incorrect type. Dispose battery according to rules!

5.5 EVK-SARA-R52 pin out

Table 5 lists the interfaces of the SARA-R52 series modules, as routed up to the 42-pin dual-in-line board-to-board connectors (J103 and J104), the 2-pin header connector (J107), the mini USB connector (J105), the micro SD card connector (J203) or the SMA connectors (J106 and J112) available on the ADP-SARA-R52 adapter board of the evaluation kit.

| SARA-R52 module | | | SARA-R52 module | | |
|-----------------|--------------------------|-----------------------------|-----------------|--------------------------|-----------------------------|
| Pin no. | Signal name | Connector Name / pin number | Pin no. | Signal name | Connector Name / pin number |
| 1 | GND | J104 pins 7-10 | 33 | EXT_INT * RTC_GNSS ** | J107 pin 2 |
| 2 | RSVD * V_BCKP_GNSS ** | J104 pin 4 | 34 | RFCTRL1 | J103 pin 26 |
| 3 | GND | J104 pins 7-10 | 35 | RFCTRL2 | J103 pin 23 |
| 4 | V_INT | J104 pin 35, J107 pin 1 | 36 | GPIO7 * TXD_GNSS ** | J103 pin 21 |
| 5 | GND | J104 pins 7-10 | 37 | GPIO8 * ANT_ON ** | J103 pin 24 |
| 6 | DSR | J104 pin 17 | 38 | SIM_CLK | J103 pin 16 |
| 7 | RI | J104 pin 18 | 39 | SIM_IO | J103 pin 13 |
| 8 | DCD | J104 pin 12 | 40 | SIM_RST | J103 pin 15 |
| 9 | DTR | J104 pin 11 | 41 | VSIM | J103 pin 14 |
| 10 | RTS | J104 pin 14 | 42 | GPIO5 | J104 pin 24 |
| 11 | CTS | J104 pin 13 | 43 | GND | J104 pins 7-10 |
| 12 | TXD | J104 pin 16 | 44 | SDIO_D2 | J203 pin 1 |
| 13 | RXD | J104 pin 15 | 45 | SDIO_CLK | J203 pin 5 |
| 14 | GND | J104 pins 7-10 | 46 | SDIO_CMD | J203 pin 3 |
| 15 | PWR_ON | J104 pin 30 | 47 | SDIO_D0 | J203 pin 7 |
| 16 | GPIO1 | J104 pin 34 | 48 | SDIO_D3 | J203 pin 2 |
| 17 | VUSB_DET | J105 pin 1 | 49 | SDIO_D1 | J203 pin 8 |
| 18 | RESET_N | J103 pin 25 | 50 | GND | J104 pins 7-10 |
| 19 | GPIO6 | J104 pin 23 | 51 | VCC | J103 pins 7-10 |
| 20 | GND | J104 pins 7-10 | 52 | VCC | J103 pins 7-10 |
| 21 | ADC | J104 pin 22 | 53 | VCC | J103 pins 7-10 |
| 22 | GND | J104 pins 7-10 | 54 | GND | J104 pins 7-10 |
| 23 | GPIO2 | J104 pin 32 | 55 | GND | J104 pins 7-10 |
| 24 | GPIO3 | J104 pin 31 | 56 | ANT | J106 pin 1 |
| 25 | GPIO4 | J104 pin 26 | 57 | GND | J104 pins 7-10 |
| 26 | SDA | J103 pin 22 | 58 | GND | J104 pins 7-10 |
| 27 | SCL | J103 pin 19 | 59 | GND | J104 pins 7-10 |
| 28 | USB_D- | J105 pin 2 | 60 | GND | J104 pins 7-10 |
| 29 | USB_D+ | J105 pin 3 | 61 | GND | J104 pins 7-10 |
| 30 | GND | J104 pins 7-10 | 62 | ANT_DET | J106 pin 1 |
| 31 | ANT_GNSS | J112 pin 1 | 63 | GND | J104 pins 7-10 |
| 32 | GND | J104 pins 7-10 | 64 | GND | J104 pins 7-10 |

* SARA-R520

** SARA-R520M10


Table 5: Interfaces of SARA-R52 series modules

| Dual-in-line board-to-board connector J104 | | | | Dual-in-line board-to-board connector J103 | | | |
|--|---------|---------|--------------------------|--|---------|---------|----------------------|
| Signal name | Pin no. | Pin no. | Signal name | Signal name | Pin no. | Pin no. | Signal name |
| Not connected | 1 | 2 | GND | Not connected | 1 | 2 | GND |
| Not connected | 3 | 4 | RSVD * V_BCKP_GNSS ** | Not connected | 3 | 4 | Not connected |
| Not connected | 5 | 6 | Not connected | Not connected | 5 | 6 | Not connected |
| GND | 7 | 8 | GND | VCC | 7 | 8 | VCC |
| GND | 9 | 10 | GND | VCC | 9 | 10 | VCC |
| DTR | 11 | 12 | DCD | Not connected | 11 | 12 | Not connected |
| CTS | 13 | 14 | RTS | SIM_IO | 13 | 14 | VSIM |
| RXD | 15 | 16 | TXD | SIM_RST | 15 | 16 | SIM_CLK |
| DSR | 17 | 18 | RI | Not connected | 17 | 18 | Not connected |
| Not connected ² | 19 | 20 | Not connected | SCL | 19 | 20 | Not connected |
| Not connected | 21 | 22 | ADC | GPIO7 * TXD_GNSS ** | 21 | 22 | SDA |
| GPIO6 | 23 | 24 | GPIO5 | RFCTRL2 | 23 | 24 | GPIO8 * ANT_ON ** |
| Not connected | 25 | 26 | GPIO4 | RESET_N | 25 | 26 | RFCTRL1 |
| Not connected | 27 | 28 | Not connected | Not connected | 27 | 28 | Not connected |
| Not connected | 29 | 30 | PWR_ON | Not connected | 29 | 30 | Not connected |
| GPIO3 | 31 | 32 | GPIO2 | Not connected | 31 | 32 | Not connected |
| Not connected | 33 | 34 | GPIO1 | Not connected | 33 | 34 | Not connected |
| V_INT | 35 | 36 | Not connected | Not connected | 35 | 36 | Not connected |
| Not connected | 37 | 38 | Not connected | Not connected | 37 | 38 | Not connected |
| Not connected | 39 | 40 | Not connected | Not connected | 39 | 40 | Not connected |
| GND | 41 | 42 | Not connected | GND | 41 | 42 | Not connected |

* SARA-R520

** SARA-R520M10

Table 6: Pin-out of the 42-pin dual-in-line board-to-board connectors (J103, J104)

 The pins / interfaces that are not supported by a specific SARA-R52 series module product version should be not driven by an external device. (See the SARA-R52 series data sheet [2] and the SARA-R52 series system integration manual [3] to learn about the features supported by each SARA-R52 series module product version.)

² For SARA-R520M10, short this pin with J103 pin 21 to route TXD_GNSS to the second COM port over J501 on EVB-WL3 (SW510 on “UART1” position)

5.6 Current consumption measurement

To measure the current consumption of SARA-R52 series modules, remove the jumper socket from the cellular VCC supply jumper **J109** on the ADP-SARA-R52 board, as shown in [Figure 7](#).

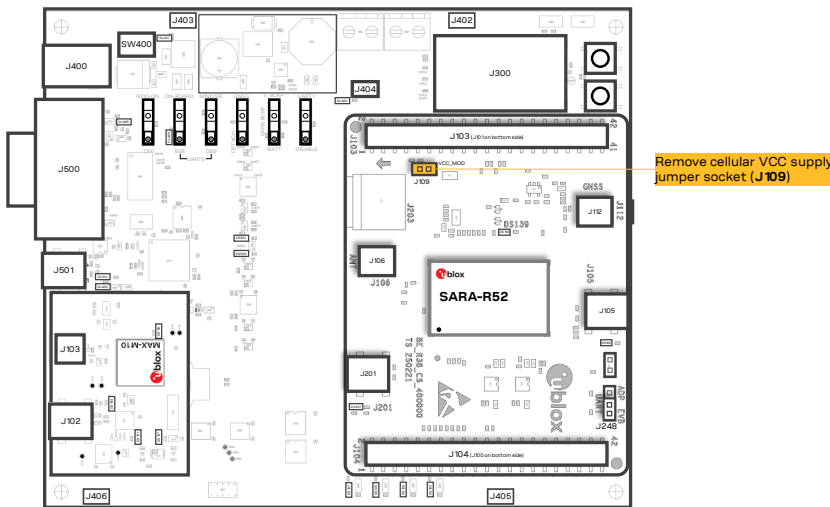


Figure 7: Jumper socket to be removed for SARA-R52 series module's current consumption measurement

A suitable external digital multi-meter (as the Keysight 34465A, 34410A or 34411A) can be used for current consumption measurements: in this example, the 3.8 V supply circuit on the EVB-WL3 will supply the cellular module, with the digital multi-meter placed in series as illustrated in [Figure 8](#).

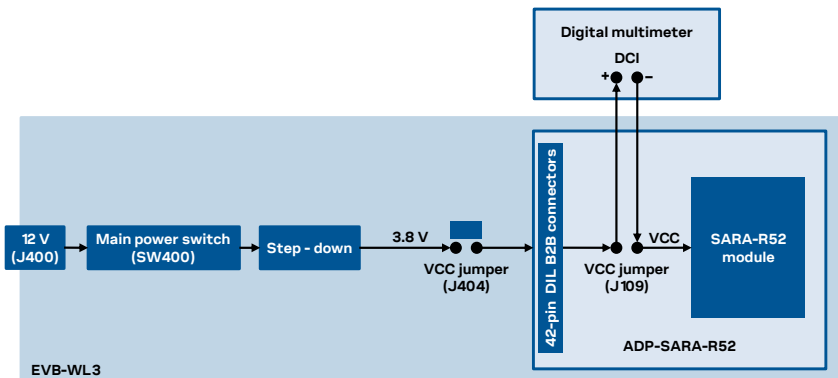


Figure 8: Setup for cellular module's current consumption measurement using a current meter

Alternatively, a suitable external DC power supply with dynamic current measurement capabilities (e.g., the portable and cheap Qoitech Otii Arc, or the more accurate Keysight N6705B, or the models designed for mobile communications Keysight 66319B/D or 66321B/D) can be used, acting also as 3.8 V supply source for the cellular module mounted on the adapter board, as illustrated in [Figure 9](#).

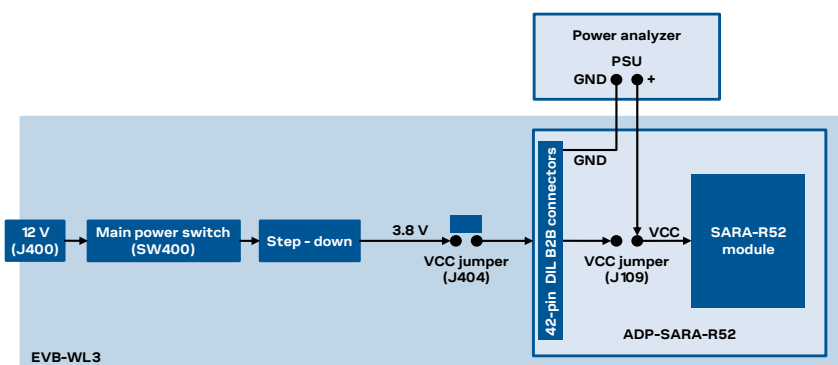


Figure 9: Setup for cellular module's current consumption measurement using a DC power analyzer

Appendix

A Setting up AT terminal communication

The u-blox m-center cellular module evaluation tool is a powerful platform for evaluating, configuring and testing u-blox cellular products. m-center includes an AT commands terminal for communication with the device and can be downloaded for free from www.u-blox.com. For m-center example scripts, visit <https://github.com/u-blox/m-center>.

1. Follow the board setup instructions in section 2 to provide all the required connections and switching on the cellular module.
2. Run the m-center tool: after the m-center start-up, the **Home** page appears, as shown in [Figure 10](#).

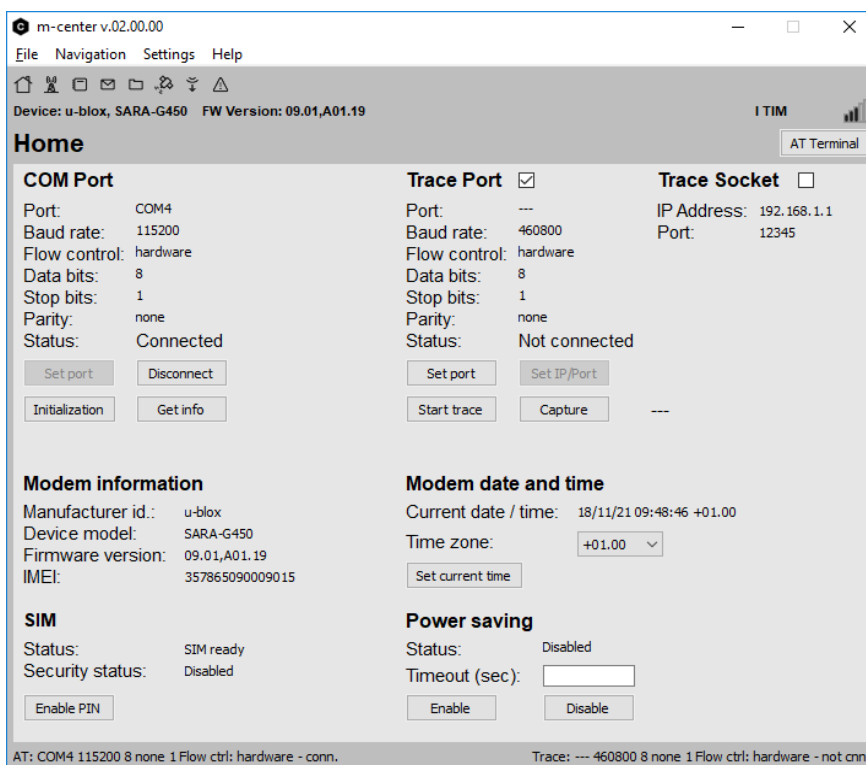


Figure 10: m-center Home page

3. On the **Home** page, set up the AT COM port with setting values below:
 - Data rate: 115200 bit/s
 - Data bits: 8
 - Parity: N
 - Stop bits: 1
 - Flow control: HW
4. Check in Windows Device Manager to find out which COM port is being used by the EVK-SARA-R52.
5. Enable the connection to u-blox cellular module by clicking on the **Connect** button.
6. Retrieve the module and network information by clicking on the **Get info** button.
7. The module information is retrieved and displayed on the **Home** page.

- Click on the **AT Terminal** button, found at the upper right of the **Home** page. A new window opens and the AT command terminal is now ready for communication with the EVK-SARA-R52.

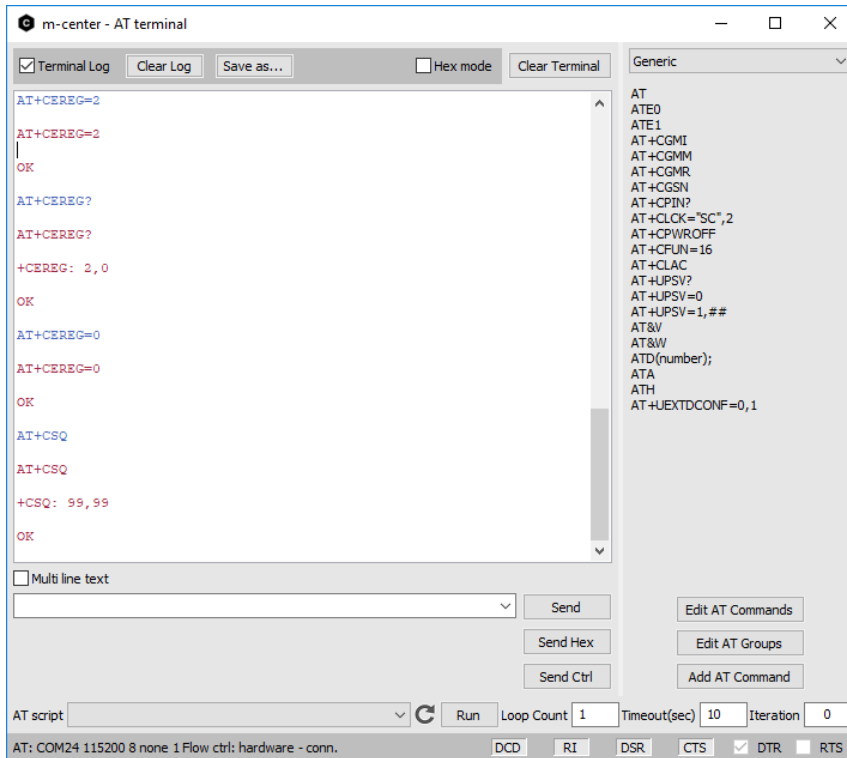


Figure 11: AT terminal window

- The AT terminal is ready to use.

For more information on using the u-blox m-center, press the **F1** key to open the m-center help window on the computer.

For the complete list of the AT commands supported by the modules and their syntax, see the SARA-R52 series AT commands manual [\[1\]](#).

B Glossary

| Abbreviation | Definition |
|--------------|--|
| ADP | Adapter Board |
| AT | AT Command Interpreter Software Subsystem, or attention |
| B2B | Board-To-Board |
| CTS | Clear To Send |
| DCD | Data Carrier Detect |
| DCE | Data Communication Equipment |
| DCI | Direct Current |
| DIL | Dual In Line |
| DSR | Data Set Ready |
| DTE | Data Terminal Equipment |
| DTR | Data Terminal Ready |
| EVB | Evaluation Board |
| EVK | Evaluation Kit |
| GND | Ground |
| GNSS | Global Navigation Satellite System |
| GPIO | General Purpose Input Output |
| HW | Hardware |
| I2C | Inter-Integrated Circuit |
| I2S | Inter IC Sound |
| IoT | Internet of Things |
| IP | Internet Protocol |
| LED | Light Emitting Diode |
| LTE | Long Term Evolution |
| NB | Narrow Band |
| PSD | Packet-Switched Data |
| PSU | Power Supply Unit |
| RAT | Radio Access Technology |
| RF | Radio Frequency |
| RI | Ring Indicator |
| RTS | Request To Send |
| Rx | Receiver |
| SDIO | Secure Digital Input Output |
| SIM | Subscriber Identity Module |
| SMA | SubMiniature version A |
| TCP | Transfer Control Protocol |
| Tx | Transmitter |
| UART | Universal Asynchronous Receiver-Transmitter serial interface |
| UDP | User Datagram Protocol |
| USB | Universal Serial Bus |

C Declaration of conformities


The equipment is intended for indoor usage. It is the user's duty to verify if further restrictions apply, such as in airplanes, hospitals, or hazardous locations (petrol stations, refineries...). Any changes or modification made to this equipment will void its compliance to the safety requirements.

Maintenance, inspections and/or repairs of the EVK-R5 shall be performed by u-blox AG.

Related documentation

- [1] u-blox SARA-R5 series AT commands manual, [UBX-19047455](#)
- [2] u-blox SARA-R52 series data sheet, [UBX-22038918](#)
- [3] u-blox SARA-R52 series system integration manual, [UBX-23004806](#)
- [4] u-blox SARA-R5 series application development guide, [UBX-20009652](#)

All these documents are available on our website (<http://www.u-blox.com>).

 For regular updates to u-blox documentation and to receive product change notifications, register on our homepage (www.u-blox.com).

Revision history

| Revision | Date | Name | Comments |
|----------|-------------|------|------------------|
| R01 | 06-Jun-2023 | fvid | Initial release. |

Contact

u-blox AG

Address: Zürcherstrasse 68
8800 Thalwil
Switzerland

For further support and contact information, visit us at www.u-blox.com/support.

X-ON Electronics

Largest Supplier of Electrical and Electronic Components

Click to view similar products for [Mobile Development Tools](#) category:

Click to view products by [U-Blox](#) manufacturer:

Other Similar products are found below :

[5G-SOC-EVB-KIT](#) [MIKROE-5124](#) [EVK-R422M8S-0](#) [76002147](#) [ADP-SARA-R500E-01](#) [6000648](#) [6001457](#) [MIKROE-2535](#) [1946](#) [1963](#)
[2687](#) [2691](#) [XK3-C-G1-UT-W](#) [XK3-C-G4-UT-W](#) [XK3-C-GM2-UT-W](#) [MIKROE-4118](#) [MIKROE-1298](#) [MIKROE-1375](#) [MIKROE-1720](#)
[MIKROE-3294](#) [MIKROE-4506](#) [MIKROE-5991](#) [MIKROE-6256](#) [MIKROE-6277](#) [MIKROE-6318](#) [EG800QEULC-N03-TA0AA](#) [109030001](#)
[109030002](#) [Monarch 2 NEKTAR-B-GM02S](#) [Monarch 2 NEKTAR-B-GM02SP](#) [Monarch-Go-STK](#) [Monarch-Go-GPS-STK](#) [6001458](#)
[SKY68001-31EK1](#) [CEL-13120](#) [CEL-14997](#) [KIT-21229](#) [WRL-20409](#) [ADP-LEXI-R520-02](#) [ADP-R10801D-00](#) [ADP-R8001-00C](#) [ADP-](#)
[R8001M10-00C](#) [ADP-SARA-R520-02](#) [ADP-SARA-R520M10-02](#) [ADP-LEXI-R422-01](#) [EVK-LEXI-R422-01](#) [EVK-R10801D-00](#) [EVK-](#)
[R422M10S-0](#) [EVK-R8001-00C](#) [EVK-R8001M10-00C](#)