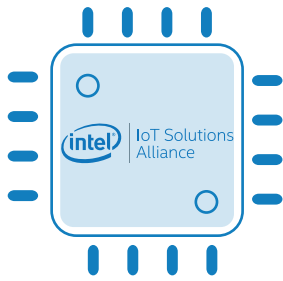




THE NEXT-GEN INTEL® X86 II OPEN HARDWARE SBC

www.udoo.org

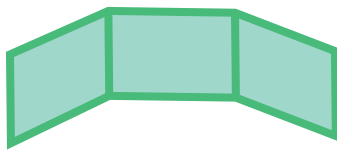
X86 II



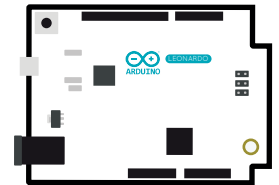
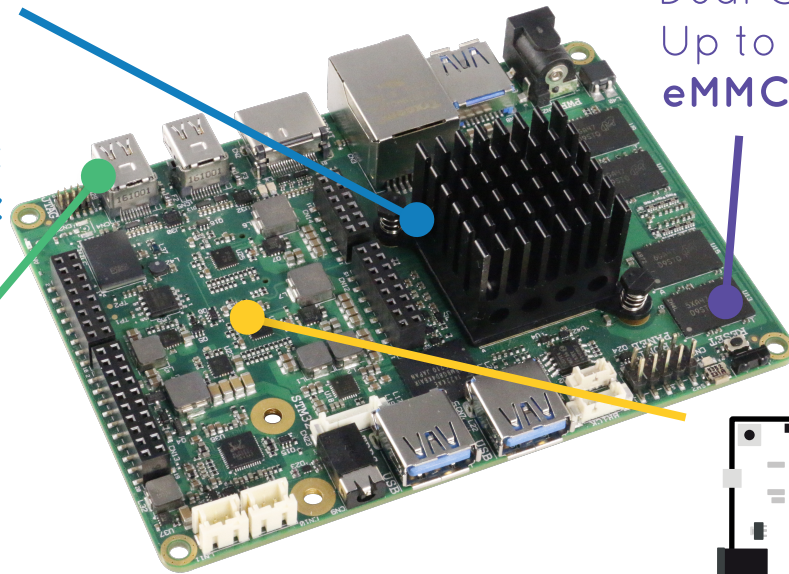
Quad core 64 BIT
CPU Up to **2.56 GHz**
GPU Up to **700 MHz**



Up to **8 GB**
Dual Channel **RAM**
Up to **32 GB**
eMMC Drive*



Up to **3 simultaneous screens**
1x HDMI, 2x MiniDP++



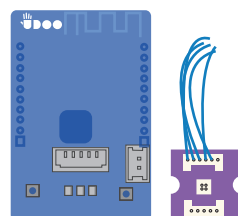
Embedded
Arduino™ Leonardo-compatible

Bluetooth 4.0 and Wi-Fi**



IoT Ready:

Main cloud services,
UDOO BRICKS &
UDOO BLU



Operating Systems:

Windows 10, 8.1, 7,
+ All Linux Flavors
for x86, Android






Low Consumption and Fanless



* Depends on version
** Optional



FEATURES	UDOO X86	
	ADVANCED PLUS	ULTRA
PROCESSOR	2.24 GHZ INTEL® CELERON® N3160	2.56 GHZ INTEL® PENTIUM® N3710
CORES	4	
MEMORY	4 GB DDR3L DUAL CHANNEL	8 GB DDR3L DUAL CHANNEL
MASS STORAGE	SATA connector - M.2 Key B SSD Slot - Micro SD card slot	
USB	3x USB 3.0 type-A sockets	
NETWORKING	Gigabit Ethernet LAN interface M.2 Key E slot for optional Wireless modules	
VIDEO INTERFACE	1 x HDMI 2 x mini DP++	
GRAPHICS	Intel HD Graphics 400 Up to 640 MHz 12 execution units	Intel HD Graphics 405 Up to 700 MHz 16 execution units
MULTIMEDIA	HW Video decode: H.265/HEVC, H.264, MPEG2, MVC, VC-1, WMV9, JPEG, VP8, VP9 HW Video encode: H.264, MVC, JPEG	
AUDIO	HD audio codec ALC 283CG Microphone+Headphone combo connector Preamplified speaker output - S/PDIF output	
IR	RC5 IR interface	
OTHER INTERFACES	Up to 20 GPIOs - 2x I2C - 2x UART - LPC - SDIO - Touch Screen signals on external pin headers	
OPERATING SYSTEM	  	
DIMENSIONS	120 mm x 85 mm (4.72 inch x 3.35 inch)	

Main Fields of Application



Digital Signage



3D Scanning



Gaming



Development platform



Interactive Installation



Smart Home Gateway



Rovers and Drones



Educational

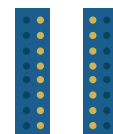
The communication between the Braswell SoC and the ATmega32U4 Microcontroller goes through an internal USB interface just like Arduino Leonardo boards connect to external PCs.

Arduino Leonardo Microcontroller

Microcontroller	ATmega32U4
Other Interfaces	1 UART 1 x i2C 1 x SPI
Arduino Pinout	Arduino Leonardo-compatible and compatible with most Arduino shields 5V compliant
Digital I/O Pinout	Up to 23 x digital I/O (7 PWM)
Analog I/O Pinout	12 x Analog input

UDOO X86 II is ARDUINO LEONARDO-COMPATIBLE

ARDUINO™ PINOUT



X-ON Electronics

Largest Supplier of Electrical and Electronic Components

Click to view similar products for [Single Board Computers](#) category:

Click to view products by [UDOO](#) manufacturer:

Other Similar products are found below :

[MANO882VPGGA-H81](#) [SSD3200W-S-SLC-INN 20-101-0738](#) [MVME61006E-2173R](#) [SHB230DGGA-RC](#) [IMB210VGGA](#) [IB915F-3955](#)
[MI958F-16C](#) [S2600WFT](#) [S2600STB](#) [BBS2600BPS](#) [BLKNUC7I3DNHNC1978015](#) [DEV-17745](#) [BEAGLEBOARD POCKET](#) [BPI-M5](#)
[MICROSOM I2 + WIFI/BT](#) [HUMMINGBOARD-I2EX BASE + WIFI/BT](#) [HUMMINGBOARD-I4 PRO + WIFI/BT](#) [VAB-600-B](#) [RT5350F-](#)
[OLINUXINO-EVB](#) [MITX-440-DVI-2E](#) [ATCA-7365-D-24GB](#) [NITX-315-DEVKIT](#) [A13-SOM-512](#) [NITX-315](#) [BANANA PI BPI-M1+](#) [A13-](#)
[SOM-WIFI-4GB](#) [AM3359-SOM-EVB-IND](#) [UPS-APLC2-A10-0432](#) [DFR0419](#) [UPS-APLP4-A10-0864](#) [UPS-APLP4-A10-0432](#) [UPS-APLP4-](#)
[A10-08128](#) [MI977F-Q27](#) [BBBLUE](#) [IB811F-I30](#) [DFR0470-ENT](#) [Nit6Q_i](#) [M2M \(TELIT\)](#) [RELAY](#) [PROFESSIONAL](#) [GCS22.2.080.2.2.I](#)
[GCS22.8.100.4.2.I](#) [GLS11.2.053.2.2.E](#) [A20-OLINUXINO-LIME-E16GS16M](#) [A20-OLINUXINO-LIME-S16M](#) [A20-OLINUXINO-LIME2-](#)
[E16GS16M](#) [A20-OLINUXINO-MICRO-E16GS16M](#) [A20-OLINUXINO-MICRO-S16M](#) [BANANA PI BPI-W2](#)