

VIEW N
SCALE 1:1

TOLERANCE			
LINEAR	ANGLES		
X ± 0.40	X° ± 5°		
.X ± 0.30	.X° ± 3°		
.XX ± 0.20	.XX° ± 2°		
.XXX ± 0.10	.XXX° ± 1°		
REV	ECN NO.	NAME	DATE

UMax conn 东莞市友贸实业有限公司
DONGGUAN UMAX ENTERPRISE LIMITED

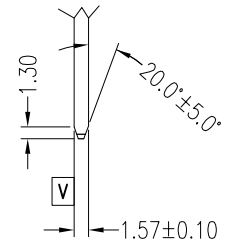
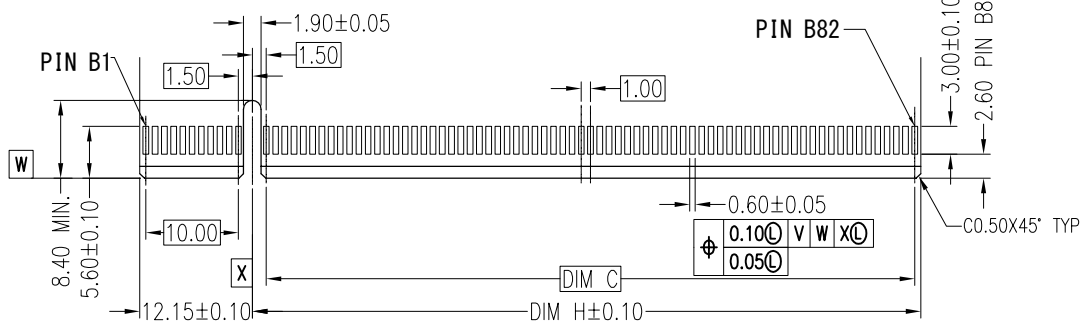
APPD: Jason MAT'L:
CHKD: Schumi FINISH:
DRWN: Lei Songping Q' TY:

TITLE: PCI-E CARD EDGE GEN5 SMT

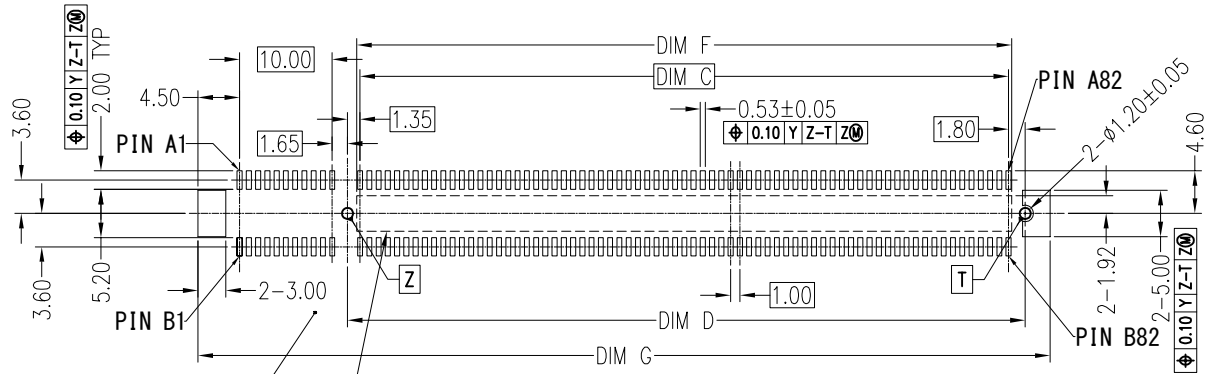
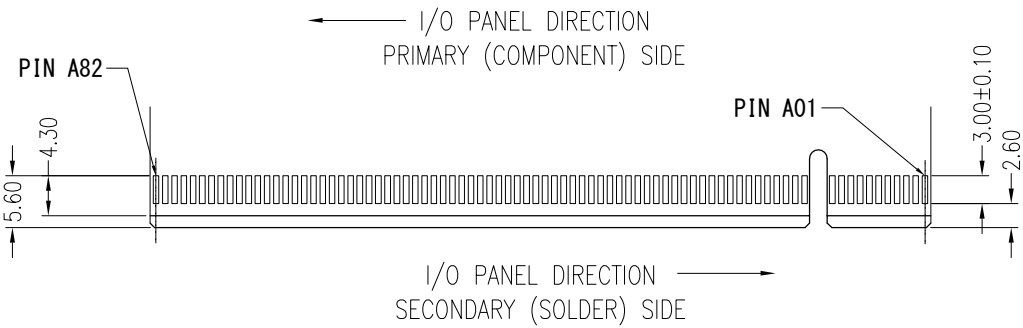
PART NO. 21650-XXXXXX

DWG NO. C-21650

UNITS	SCALE	SHEET	REV
MM	1:1	1 OF 3	0



NOTES:
CHAMFER EDGE MUST BE FREE OF CUTTING BURRS



DIMENSIONS								
POSITION	DIM A	DIM B	DIM C	DIM D	DIM E	DIM F	DIM G	DIM H
98	56.00	38.65	37.00	40.15	58	37.70	59	39.15
164	89.00	71.65	70.00	73.15	91	70.70	92	72.15

RECOMMENDED PCB LAYOUT
TOLERANCE ±0.05

TOLERANCE	
LINEAR	ANGLES
X ± 0.40	X° ± 5°
.X ± 0.30	.X° ± 3°
.XX ± 0.20	.XX° ± 2°
.XXX ± 0.10	.XXX° ± 1°

UMax conn 东莞市友贸实业有限公司
DONGGUAN UMAX ENTERPRISE LIMITED

TITLE: PCI-E CARD EDGE GEN5 SMT

PART NO. 21650-XXXXXX

DWG NO. C-21650

APPD: Jason MAT'L:

CHKD: Schumi FINISH:

DRWN: Lei Songping Q' TY:

REV	ECN NO.	NAME	DATE

UNITS	SCALE	SHEET	REV
MM	1 : 1	2 OF 3	0

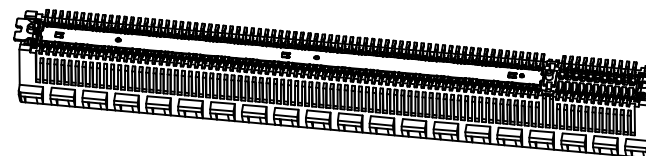
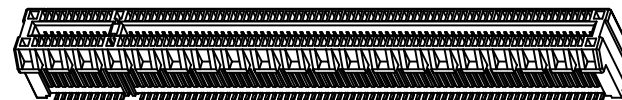
NOTE:

1.MATERIAL:

HOUSING: THERMOPLASTIC, HIGH TEMP, UL94V-0, BLACK.
 TERMINAL: COPPER ALLOY.
 GND PIN: SUS304 1/2H.
 STATOR: SUS304 1/2H.

2.FINISH:

TERMINAL:
 CONTACT AREA: SELECTIVE GOLD PLATING.
 SOLDERING AREA: TIM PITING 100u"MIN THICKNESS
 UNDER PLATING: NICKEL PLATING 50u"MIN THICKNESS.
 GND PIN: NO PLATING.
 STATOR:
 MATTE TIN PLATING 100u"MIN THICKNESS.OVERALL
 UNDER PLATING: NICKEL PLATING 50u"MIN THICKNESS.



PART NO.

21650 - X 1 X X X X

Ridge Options

- 0: Non Ridge
- 1: With Ridge

HSG Color

- 1: Black

Post Options

- 0: With Post
- 1: Without Post

Contact Plating

- 0: 30u" Gold
- 1: 15u" Gold
- 2: Gold Flash

Packing Options

- T-Tray Packaging
- C-Tray Packaging With Cap

No. of Pins

- 2: 98P
- 3: 164P

TOLERANCE		UMax conn	东莞市友贸实业有限公司 DONGGUAN UMAX ENTERPRISE LIMITED		TITLE: PCI-E CARD EDGE GEN5 SMT			
LINEAR	ANGLES				PART NO. 21650-XXXXXX			
X. ±0.40	X° ± 5°	APPD: Jason	MAT'L:	DWG NO. C-21650				
.X ±0.30	.X° ± 3°			CHKD: Schumi	FINISH:			
.XX ±0.20	.XX° ± 2°	DRWN: Lei Songping	Q' TY:		UNITS	SCALE	SHEET	REV
.XXX ±0.10	.XXX° ± 1°			MM	1 : 1	3 OF 3	0	

REV	ECN NO.	NAME	DATE

X-ON Electronics

Largest Supplier of Electrical and Electronic Components

Click to view similar products for [UMAX](#) manufacturer:

Other Similar products are found below :

[161C200](#) [20912-115110C](#) [20912-215110C](#) [21650-11012T](#) [21650-11013T](#) [3091-10100T](#) [3091-10102T](#) [3091-10111T](#) [3091-10113T](#) [3113-110T](#) [3113-111T](#) [3113-112T](#) [3113-113T](#) [3126-10101D](#) [3126-10101T](#) [3126-10102T](#) [3126-10103D](#) [3126-10103T](#) [3126-10200T](#) [3157-00102D](#) [3157-10100D](#) [3157-10101D](#) [3157-10103D](#) [3157-10200D](#) [3160-10120T](#) [3183-10110P1T](#) [3183-10111P1T](#) [3183-10112P1T](#) [3183-10113P1T](#) [3183-10200P1T](#) [3183-10201P1T](#) [3183-10202P1T](#) [3183-10203P1T](#) [3183-10211P1T](#) [4-5099-0](#) [4-5099-2](#) [4-5099-7](#) [4-5099-8](#) [90405-15211-2](#) [90405-15212-2](#) [90411-151131](#) [90411-151231](#) [90414-15011-21](#) [91302-32-067R2B](#) [91302-32-067RDM](#) [91302-42-067R2B](#) [91302-55-067R2M](#) [91302-67-067R2M](#) [91302-85-067RCB](#) [91302-85-067RDM](#)