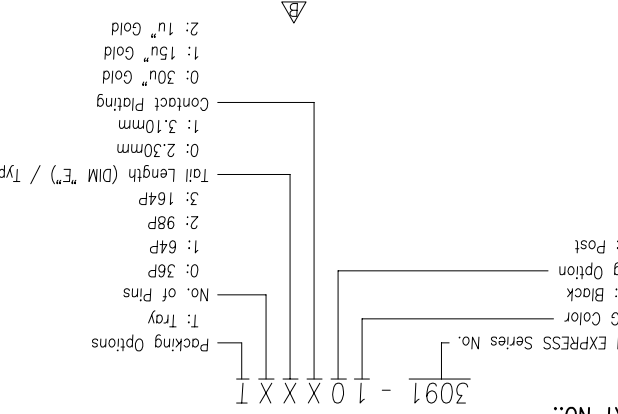


DIMENSIONS

POSITION	N	B ±0.15	C ±0.15	D ±0.23
36	6	7.65	9.15	25.00
64	20	21.65	23.15	39.00
98	37	38.65	40.15	56.00
164	70	71.65	73.15	89.00



NOTES:

- MATERIAL: PA9T (KUARARY G2330) WITH 30% GF, UL94V-0, COLOR: SEE PART No..
- TINE PLATE: LCP (ZENITE 5145L OR E471I) WITH 30% GF, COLOR: SEE PART No., UL94V-0
- 1.2 CONTACTS: PHOSPHOR BRONZE, C5191R-H, T=0.25mm
2. FINISH: SELECTIVE GOLD PLATING ON CONTACT AREA, 100u" MIN. MATTE TIN PLATING ON SOLDER TAILS, 50u" MIN. NICKEL UNDERPLATING OVERALL.
- "⑩" IS MAJOR DIMENSION FOR QC.
- "⊗" SHOWS FAI MEASUREMENT POINT.
- PRODUCT SPEC: PS-3G10-01
- PACKAGING SPEC: 309104001

PART NO.: 3091-10XXX1

PCI EXPRESS Series No. 3091-10XXX1

Packing Options: T. Tray, No. of Pins, HSG Color, Peg Option, 0: Post

Contact Plating: 0: 2.30mm, 1: 3.10mm, 2: 98P, 3: 164P, 4: 2.98P, 5: 1.64P, 6: 0.36P

Tail Length (DIM "E") / Type: 1: 3.10mm, 2: 2.30mm, 3: 1.64P, 4: 2.98P, 5: 1.64P, 6: 0.36P

REV	ECCN NO.	NAME	DATE	.XXX±.10	.XXX±.15	.XXX±.20	.X±.25	LINEAR ANGLES	TOLERANCE
A	12035	Terry	Jul,05,2012	.XX±.15	.XX±.15	.X±.20	X.±		
B	14026	Terry	Nov,13,2014	.X±.20	.X±.20	.X±.20	X.±		
REV	ECCN NO.	NAME	DATE	.XXX±.10	.XXX±.15	.XXX±.20	.X±.25	LINEAR ANGLES	TOLERANCE

DRWN:	CHKD:	APPD:	MAT'L:	DWG NO.	PART NO.	TITLE:
Terry	Schumi	Jason		309105001	3091-10XXX1	PCI EXPRESS CARD EDGE, 1.0mm PITCH, R/A TYPE

Q'TY:	FINISH:	UNITS	SCALE	SHEET	REV
		MM	1:1	1 OF 1	B

Umax 东莞市友贸实业有限公司 DONGGUAN UMAXCONN ENTERPRISE LIMITED

DRWN: Terry

CHKD: Schumi

APPD: Jason

MAT'L:

DWG NO. 309105001

PART NO. 3091-10XXX1

TITLE: PCI EXPRESS CARD EDGE, 1.0mm PITCH, R/A TYPE

UNITS: MM

SCALE: 1:1

SHEET: 1 OF 1

REV: B

X-ON Electronics

Largest Supplier of Electrical and Electronic Components

Click to view similar products for [Standard Card Edge Connectors](#) category:

Click to view products by [UMAX](#) manufacturer:

Other Similar products are found below :

[6565204-6](#) [PKC-156](#) [1437274-4](#) [147889-1](#) [1489165-4](#) [EBT156-12B1X](#) [EBT15622B2X](#) [EBT156-22R2W](#) [1-582587-1](#) [1-582589-1](#) [2-6437275-9](#) [284-0102-12100](#) [306022901000000](#) [307-012-502-202](#) [307-024-526-201](#) [307-056-520-300](#) [307-080-526-208](#) [1926088-2](#) [245-062-520-350](#) [287-0032-12101](#) [306-010-500-112](#) [306-028-525-102](#) [306-240-318](#) [307-036-502-202](#) [307-036-521-301](#) [307-072-526-202](#) [345-060-559-303](#) [368-004-520-201](#) [392-008-559-201](#) [534671-1](#) [5-530501-5](#) [341-240-317](#) [345-029-520-300](#) [345-030-500-301](#) [345-044-500-300](#) [345-220-058](#) [346-240-318](#) [387-012-523-300](#) [395-044-520-300](#) [395-100-524-300](#) [50-12B-10](#) [50-6SN-5](#) [09-07-2032](#) [10035388-106LF](#) [10035388-802LF](#) [10115859-011LF](#) [10122859-009LF](#) [101269333204245CLF](#) [10127905-B04B24BLF](#) [530555-1](#)