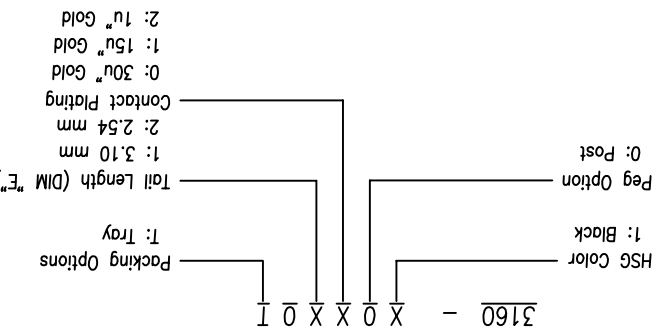
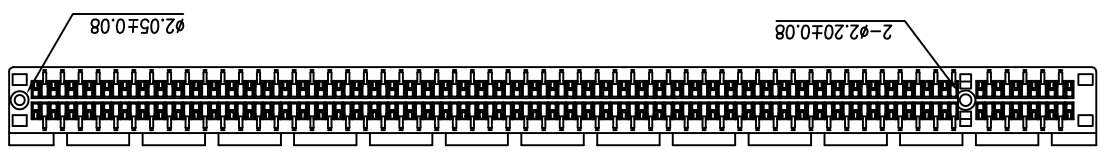
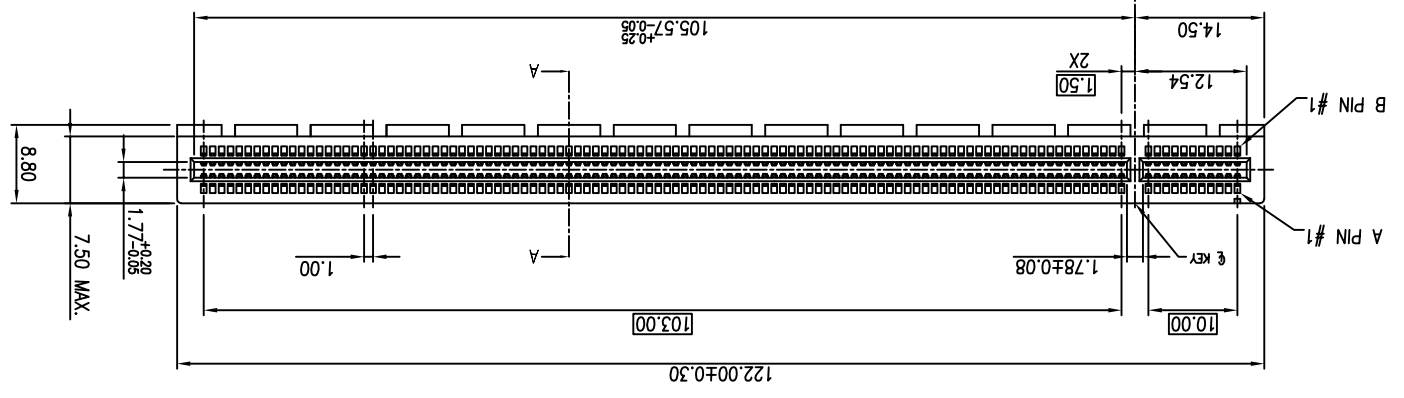
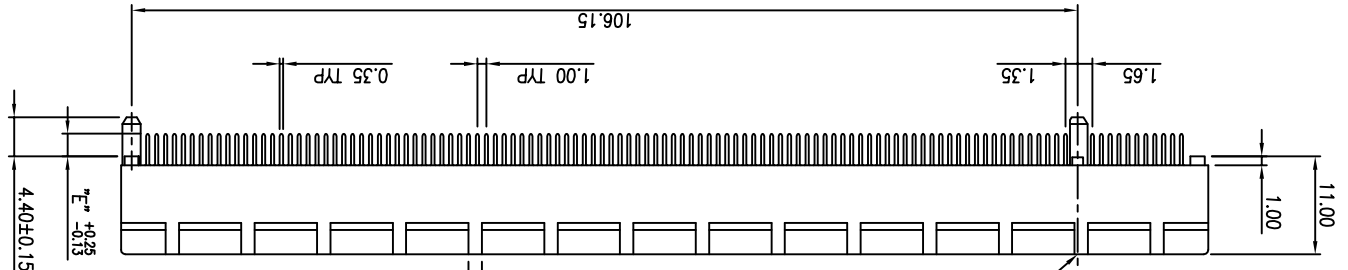


1	REV	ECN NO.	NAME	DATE	.XXX±0.10	.XXX±	DRWN: Jason	6	7	8
0	0	---	Terry	Jul,08,2015	.XX±0.20	.XX±	CHKD: Schumi	Q'TY:	MM	CUSTOMER
					.X±0.30	.X±	APPD: John	FINISH:	UNITS	SCALE
					X.±0.40	X.± 3'	MATERIAL:		1 : 1	1 OF 3
	TOLERANCE		ANGLES		UMax		DONGGUAN UMAX ENTERPRISE LIMITED		TITLE:	
					com		东莞市外贸实业有限公司		PCI EXPRESS CARD EDGE 230P	
					DWG NO.		C-3160		REV	

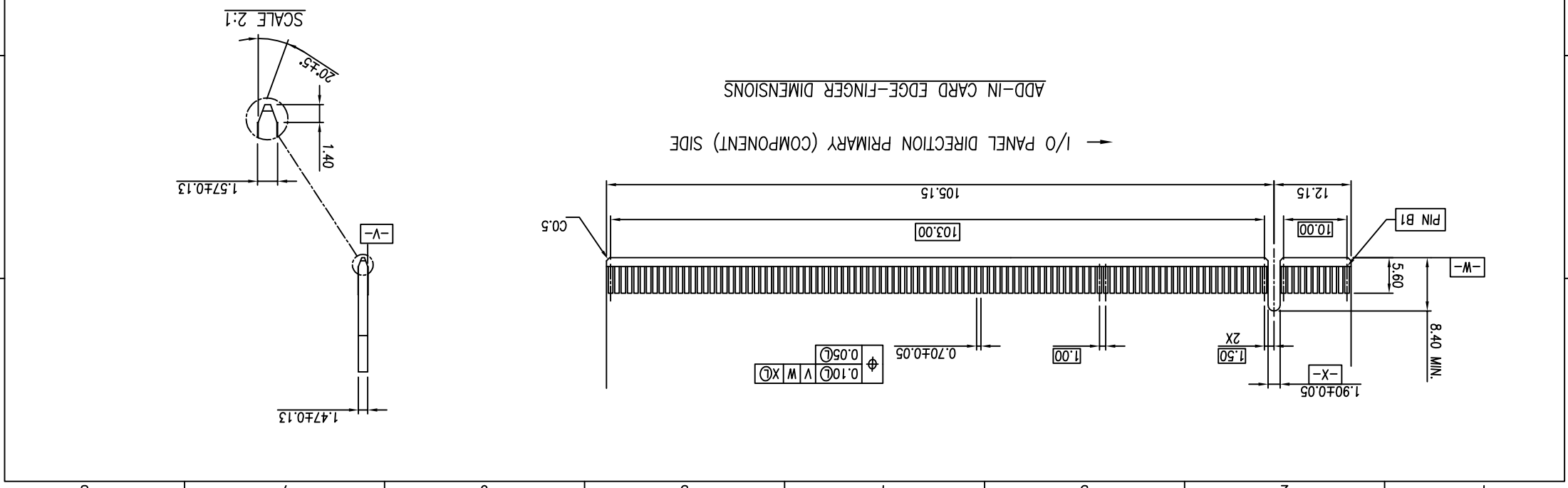
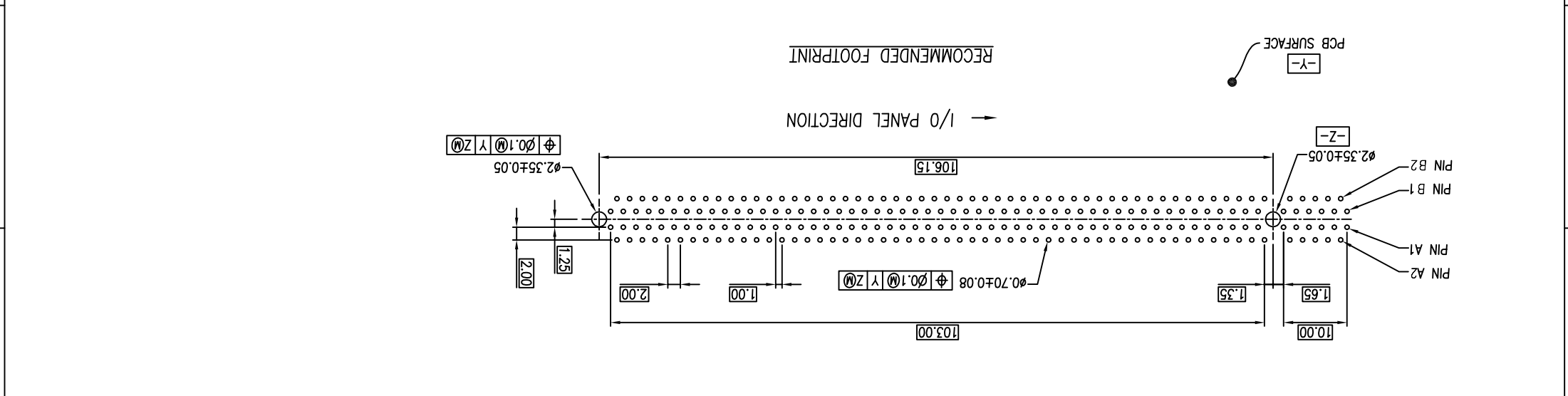


PART NO. 3160 - X 0 X 0 X 0 I



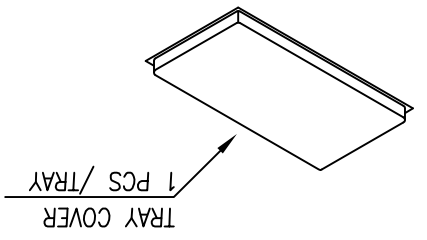
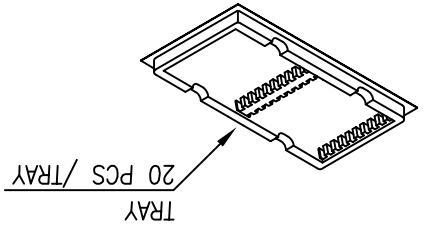
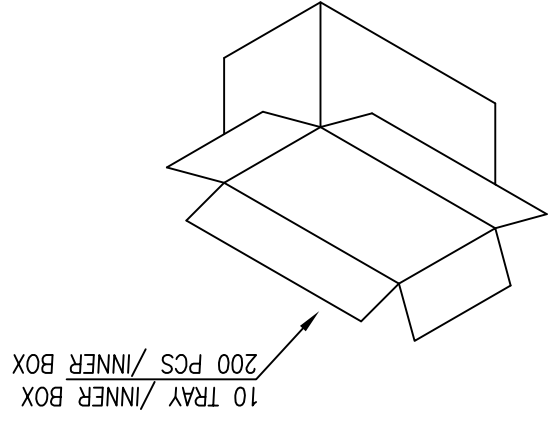
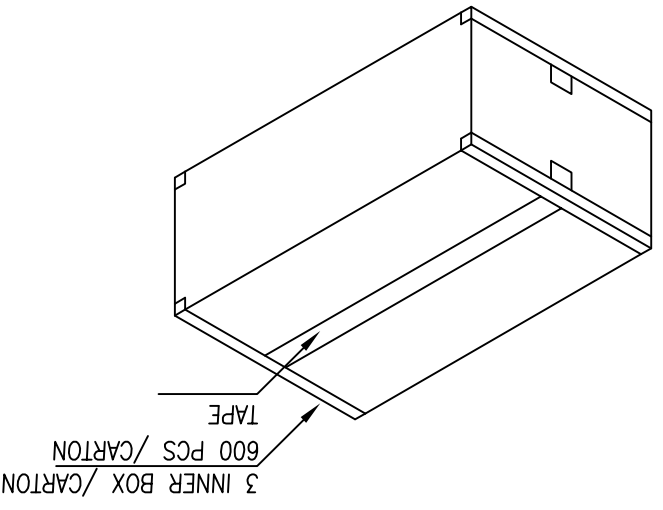
- NOTES:
1. MATERIAL: 1.1 HOUSING: THERMOPLASTIC, HIGH TEMP, UL94V-0; 1.2 CONTACTS: COPPER ALLOY. COLOR: BLACK
 2. FINISH: 2.1 CONTACT: SELECTIVE GOLD PLATING ON THE CONTACT AREA. 100u" MIN. MATTE TIN PLATING ON THE SOLDER TAILS. 50u" MIN. NICKEL UNDERPLATING OVERALL.
 3. PRODUCT SPEC.: PS-3610-01
 4. FOR WAVE SOLDER APPLICATION ONLY

1	REV	ECN NO.	NAME	DATE	.XXX±0.05	.XXX±	DRWN: Jason	Q'TY:	6	7	8
2	SEE SHEET 1				.XX±0.10	.XX±	CHKD: Schumi	FINISH:			
3					.X±0.15	.X±	APPD: John	MAT'L:			
4					X.±0.20	X.± 3'	Umax DONGGUAN UMAX ENTERPRISE LIMITED 东莞市友贸实业有限公司				
5	TOLERANCE		LINEAR	ANGLES							
6	DWG NO.		C-3160								
7	TITLE:		PCI EXPRESS CARD EDGE 230P								
8	REV	SHEET	SCALE	1:1	2 OF 3	0					



1	REV	ECN NO.	NAME	DATE	.XXX±.05	.XXX±	DRWN: Jason	Q'TY:	6	7	8
2	SEE SHEET 1				.XX±.10	.XX±	CHKD: Schumi	FINISH:		UNITS	3 OF 3
3					.X±.15	.X±	APPD: John	MAT'L:		SCALE	0
4					X.±.20	X.±.3	DONGGUAN UMAX ENTERPRISE LIMITED			MM	
5	TOLERANCE		LINEAR	ANGLES	UMax		东莞市友贸实业有限公司			MM	
6	TITLE:		PCI EXPRESS CARD EDGE 230P		DONGGUAN UMAX ENTERPRISE LIMITED		DONGGUAN UMAX ENTERPRISE LIMITED			UNITS	
7	DWG NO.		C-3160		APPD: John		MAT'L:			SCALE	
8	CUSTOMER		PCI EXPRESS CARD EDGE 230P		DRWN: Jason		Q'TY:			SCALE	

SHIPPING CARTON



- NOTES:
1. TRAY COVER SIZE: 329.5mm(L) X 170mm(W) X 20mm(H).
 2. TRAY SIZE: 328.5mm(L) X 170mm(W) X 20mm(H).
 3. BOX SIZE: 340mm(L) X 187mm(W) X 210mm(H).
 4. CARTON SIZE: 576mm(L) X 350mm(W) X 232mm(H).
 5. NET WEIGHT: 8.7 kg.
 6. GROSS WEIGHT: 10.4 kg.

X-ON Electronics

Largest Supplier of Electrical and Electronic Components

Click to view similar products for [FFC & FPC Connectors](#) category:

Click to view products by [UMAX](#) manufacturer:

Other Similar products are found below :

[HFW11R-1STE1H1LF](#) [FH29B-100S-0.2SHW\(99\)](#) [FA5S008HP1](#) [FH29B-120S-0.2SHW\(99\)](#) [FH29B-80S-0.2SHW\(99\)](#) [FHS-16](#) [FPH-2022G](#)
[52610-1075](#) [52610-1275](#) [52610-1934](#) [XF3M\(1\)-1415-1B-R100](#) [501864-3091-TR225](#) [0525594033](#) [086210010340800](#) [086222026001800](#)
[52271-2869-CUT-TAPE](#) [62674-201121DLF](#) [62684-36210E9ALF](#) [52610-1675](#) [52746-1671-TR250](#) [10051922-2810EHLF](#) [6-520415-9](#)
[BD021-09A-A1-0350-0200-0550-LD](#) [SFV6R-1STE9HLF](#) [XF3M-2915-1B-R100](#) [1658549-1](#) [62674-221121ALF](#) [46214008010800](#)
[046298003000883](#) [151660622](#) [842-816-2630-035](#) [AYF530665TA](#) [AYF351525](#) [046296011930846+](#) [AYF352325A](#) [046254020000800+](#)
[FH19C-13S-0.5SH\(99\)](#) [FH39J-51S-0.3SHW\(99\)](#) [AYF355125A](#) [AYF530365TA](#) [FH29B-44S-0.2SHW\(99\)](#) [SFW5R-2STAE9LF](#) [AYF351125A](#)
[AYF350725A](#) [62684-502100AHLF](#) [FH39-61S-0.3SHW\(99\)](#) [AYF414035A](#) [10064555-172520HLF](#) [AYF212335A](#) [504754-2500](#)