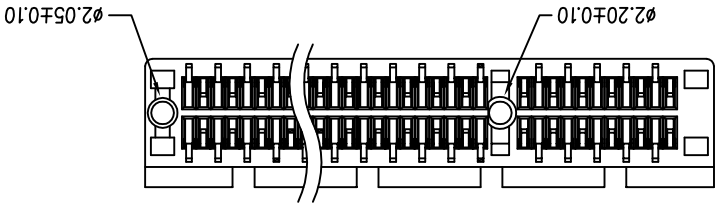
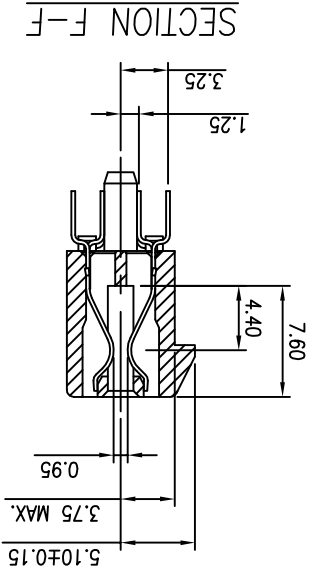
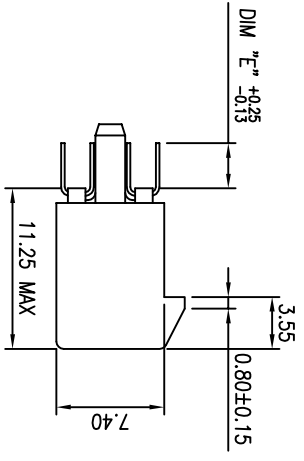
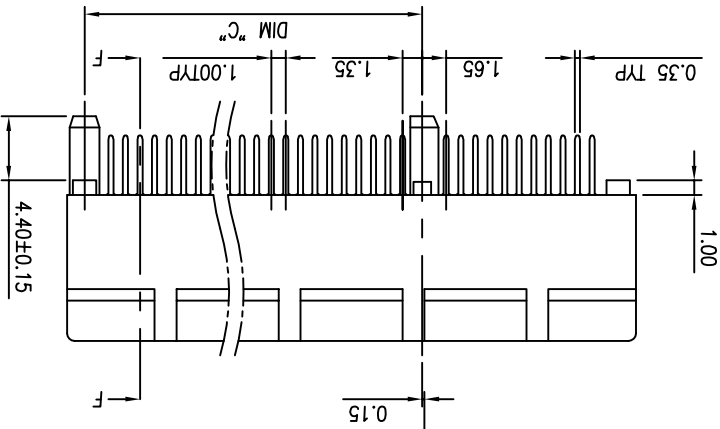
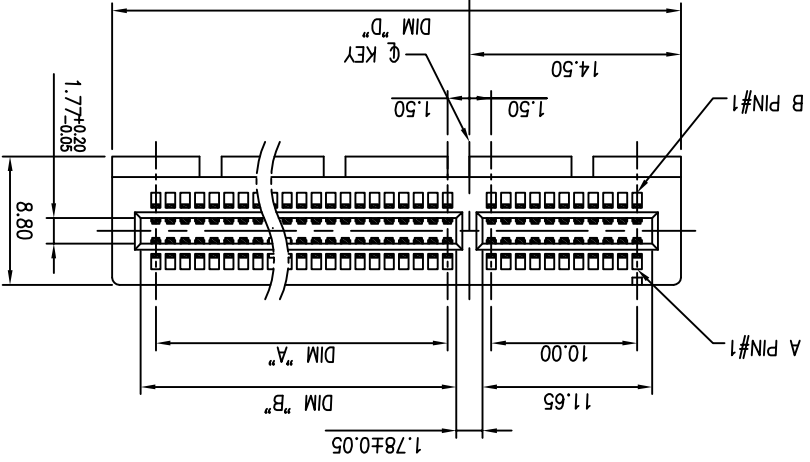


DIMENSIONS				
POSITION	A ± 0.10	B $^{+0.15}_{-0.05}$	C ± 0.20	D ± 0.23
36	6	7.65	9.15	25.00
64	20	21.65	23.15	39.00
98	37	38.65	40.15	56.00
164	70	71.65	73.15	89.00



DUAL POST TYPE

TITLE: PCI EXPRESS 1.0mm CARD EDGE ASSY		PART NO. 3183-XXXXXPXT		DWG NO. 318307001		REV	
Umax 东莞市外贸实业有限公司		DONGGUAN UMAXCONN ENTERPRISE LIMITED		APPD: John		MATERIAL: Jason	
TOLERANCE		ANGLES		CHKD: Jason		Q'TY:	
LINEAR		X.±0.40		DRWN: Schumi		SCALE	
X.±0.10		X.XX±.10		DATE		SHEET	
X.±0.20		X.XX±.20		Oct,28,2005		1 OF 5	
X.±0.30		X.±.30		Jul,10,2009		CUSTOMER	
X.±.40		X.±.40		May,11,2011		8	
Terry		Terry		NAME		REV	
A		A		Schumi		94035	
B		B		Terry		09026	
B0		B0		Terry		ECN NO.	

1 2 3 4 5 6 7 8

POSITION	A ± 0.10	B $^{+0.15}_{-0.05}$	C ± 0.20	D ± 0.23
36	6	7.65	9.15	25.00
64	20	21.65	23.15	39.00
98	37	38.65	40.15	56.00
164	70	71.65	73.15	89.00

DIM E	PCB THICKNESS	DIM F
2.30	1.56	1.7
3.10	2.36	2.5
2.54	1.56	1.7

DIM "F"	± 0.15
7.40	
11.25 MAX	

DIM "E"	$^{+0.25}_{-0.13}$
2.72wX0.6t	

DIM "C"	1.00TYP
1.35	
1.65	

DIM "D"	ϕ KEY
1.50	
1.50	

DIM "A"	10.00
11.65	

DIM "B"	1.78 ± 0.05
8.80	

DIM "A PIN#1"	11.65
10.00	

DIM "B PIN#1"	1.50
1.50	

DIM "D"	1.77 $^{+0.20}_{-0.08}$
8.80	

DIM "C"	1.00
0.35 TYP	

DIM "E"	$^{+0.25}_{-0.13}$
2.72wX0.6t	

DIM "F"	± 0.15
7.40	
11.25 MAX	

DIM "C"	1.00TYP
1.35	
1.65	

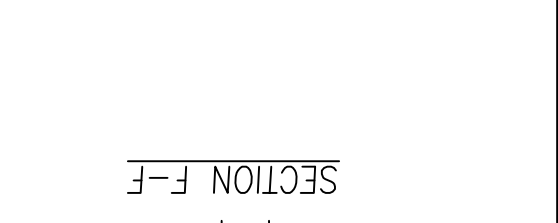
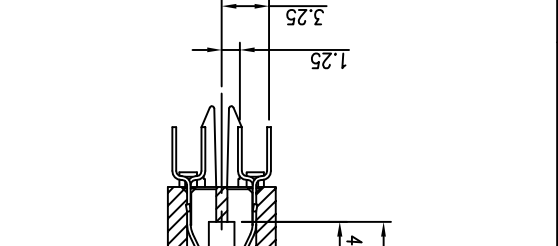
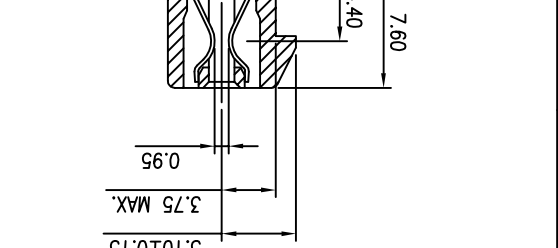
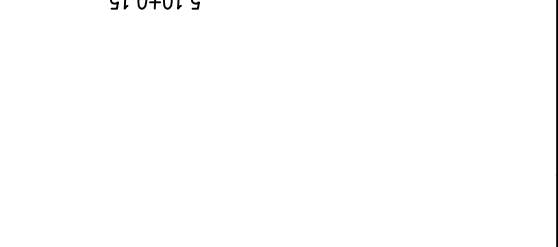
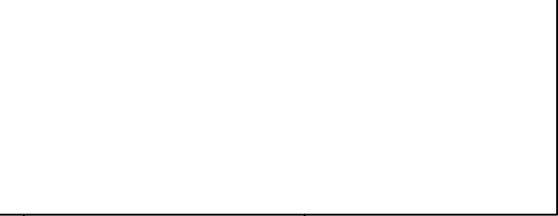
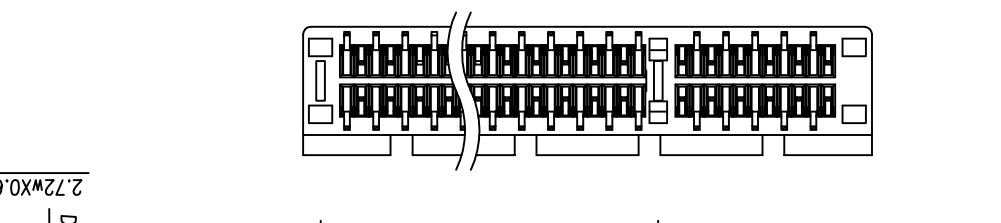
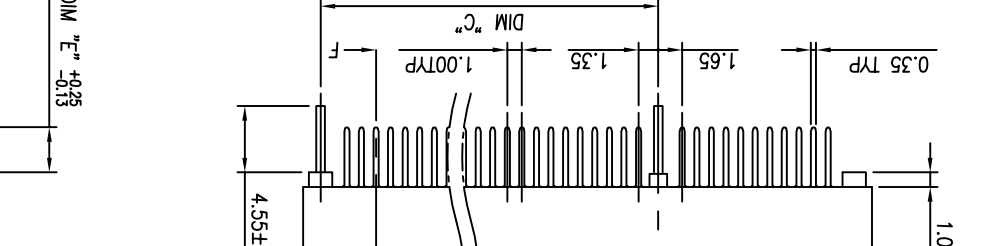
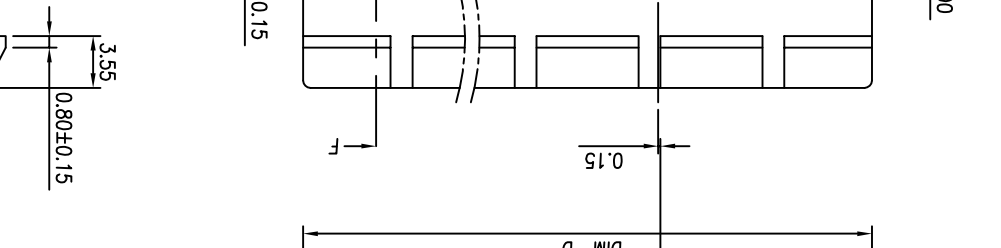
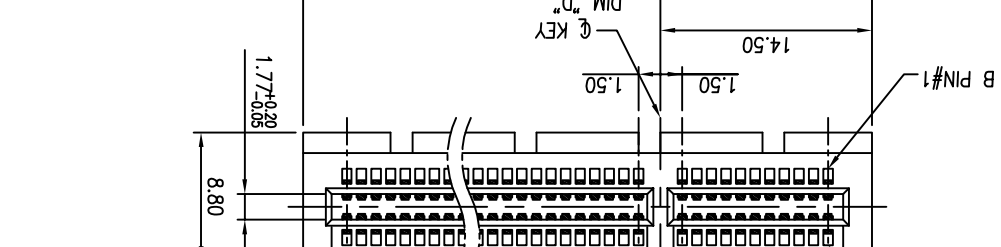
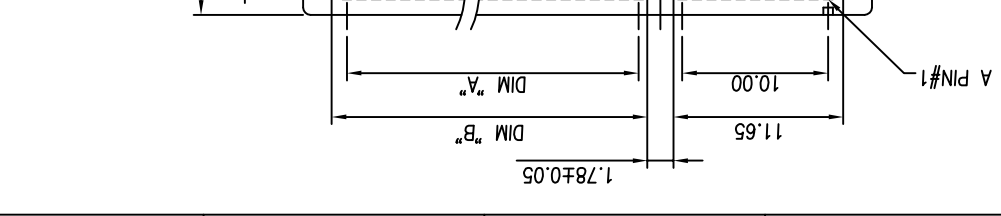
DIM "D"	ϕ KEY
1.50	
1.50	

DIM "A"	10.00
11.65	

DIM "B"	1.78 ± 0.05
8.80	

DIM "A PIN#1"	11.65
10.00	

DIM "B PIN#1"	1.50
1.50	



REV	ECN NO.	NAME	DATE
See Sheet 1			

TOLERANCE	LINEAR	ANGLES
X.±0.40	X.±	X.±
.X±0.30	.X±	.X±
.XXX±0.10	.XXX±	.XXX±

APPD:	JASON	MAT'L:	DWG NO.
APPD:	JASON	MAT'L:	318307001

REV	ECN NO.	NAME	DATE
REV	ECN NO.	NAME	DATE

REV	ECN NO.	NAME	DATE
REV	ECN NO.	NAME	DATE

REV	ECN NO.	NAME	DATE
REV	ECN NO.	NAME	DATE

REV	ECN NO.	NAME	DATE
REV	ECN NO.	NAME	DATE

REV	ECN NO.	NAME	DATE
REV	ECN NO.	NAME	DATE

REV	ECN NO.	NAME	DATE
REV	ECN NO.	NAME	DATE

REV	ECN NO.	NAME	DATE
REV	ECN NO.	NAME	DATE

REV	ECN NO.	NAME	DATE
REV	ECN NO.	NAME	DATE

REV	ECN NO.	NAME	DATE
REV	ECN NO.	NAME	DATE

REV	ECN NO.	NAME	DATE
REV	ECN NO.	NAME	DATE

REV	ECN NO.	NAME	DATE
REV	ECN NO.	NAME	DATE

REV	ECN NO.	NAME	DATE
REV	ECN NO.	NAME	DATE

REV	ECN NO.	NAME	DATE
REV	ECN NO.	NAME	DATE

REV	ECN NO.	NAME	DATE
REV	ECN NO.	NAME	DATE

REV	ECN NO.	NAME	DATE
REV	ECN NO.	NAME	DATE

REV	ECN NO.	NAME	DATE
REV	ECN NO.	NAME	DATE

REV	ECN NO.	NAME	DATE
REV	ECN NO.	NAME	DATE

REV	ECN NO.	NAME	DATE
REV	ECN NO.	NAME	DATE

REV	ECN NO.	NAME	DATE
REV	ECN NO.	NAME	DATE

REV	ECN NO.	NAME	DATE
REV	ECN NO.	NAME	DATE

REV	ECN NO.	NAME	DATE
REV	ECN NO.	NAME	DATE

REV	ECN NO.	NAME	DATE
REV	ECN NO.	NAME	DATE

REV	ECN NO.	NAME	DATE
REV	ECN NO.	NAME	DATE

REV	ECN NO.	NAME	DATE
REV	ECN NO.	NAME	DATE

REV	ECN NO.	NAME	DATE
REV	ECN NO.	NAME	DATE

REV	ECN NO.	NAME	DATE
REV	ECN NO.	NAME	DATE

REV	ECN NO.	NAME	DATE
REV	ECN NO.	NAME	DATE

REV	ECN NO.	NAME	DATE
REV	ECN NO.	NAME	DATE

REV	ECN NO.	NAME	DATE
REV	ECN NO.	NAME	DATE

REV	ECN NO.	NAME	DATE
REV	ECN NO.	NAME	DATE

REV	ECN NO.	NAME	DATE
REV	ECN NO.	NAME	DATE

REV	ECN NO.	NAME	DATE
REV	ECN NO.	NAME	DATE

REV	ECN NO.	NAME	DATE
REV	ECN NO.	NAME	DATE

REV	ECN NO.	NAME	DATE
REV	ECN NO.	NAME	DATE

REV	ECN NO.	NAME	DATE
REV	ECN NO.	NAME	DATE

REV	ECN NO.	NAME	DATE
REV	ECN NO.	NAME	DATE

REV	ECN NO.	NAME	DATE
REV	ECN NO.	NAME	DATE

REV	ECN NO.	NAME	DATE
REV	ECN NO.	NAME	DATE

REV	ECN NO.	NAME	DATE
REV	ECN NO.	NAME	DATE

REV	ECN NO.	NAME	DATE
REV	ECN NO.	NAME	DATE

REV	ECN NO.	NAME	DATE
REV	ECN NO.	NAME	DATE

REV	ECN NO.	NAME	DATE
REV	ECN NO.	NAME	DATE

REV	ECN NO.	NAME	DATE
REV	ECN NO.	NAME	DATE

REV	ECN NO.	NAME	DATE
REV	ECN NO.	NAME	DATE

REV	ECN NO.	NAME	DATE
REV	ECN NO.	NAME	DATE

REV	ECN NO.	NAME	DATE
REV	ECN NO.	NAME	DATE

REV	ECN NO.	NAME	DATE
REV	ECN NO.	NAME	DATE

REV	ECN NO.	NAME	DATE
REV	ECN NO.	NAME	DATE

REV	ECN NO.	NAME	DATE
REV	ECN NO.	NAME	DATE

REV	ECN NO.	NAME	DATE
REV	ECN NO.	NAME	DATE

REV	ECN NO.	NAME	DATE
REV	ECN NO.	NAME	DATE

REV	ECN NO.	NAME	DATE
REV	ECN NO.	NAME	DATE

REV	ECN NO.	NAME	DATE
REV	ECN NO.	NAME	DATE

REV	ECN NO.	NAME	DATE
REV	ECN NO.	NAME	DATE

REV	ECN NO.	NAME	DATE
REV	ECN NO.	NAME	DATE

REV	ECN NO.	NAME	DATE
REV	ECN NO.	NAME	DATE

REV	ECN NO.	NAME	DATE
REV	ECN NO.	NAME	DATE

REV	ECN NO.	NAME	DATE
REV	ECN NO.	NAME	DATE

REV	ECN NO.	NAME	DATE
REV	ECN NO.	NAME	DATE

REV	ECN NO.	NAME	DATE
REV	ECN NO.	NAME	DATE

REV	ECN NO.	NAME	DATE
REV	ECN NO.	NAME	DATE

REV	ECN NO.	NAME	DATE
REV	ECN NO.	NAME	DATE

REV	ECN NO.	NAME	DATE
REV	ECN NO.	NAME	DATE

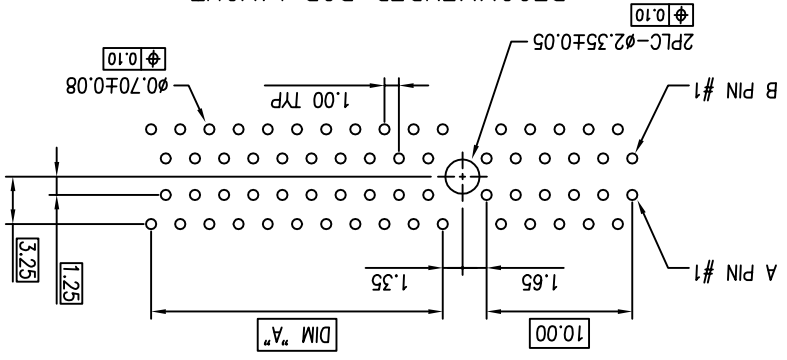
REV	ECN NO.	NAME	DATE
REV	ECN NO.	NAME	DATE

REV	ECN NO.	NAME	DATE
REV	ECN NO.	NAME	DATE

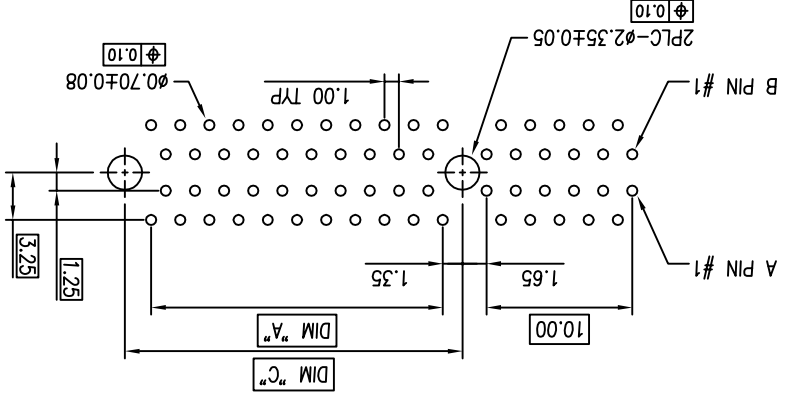
REV	ECN NO.	NAME	DATE	.XXX .XXX±	DRWN: Schumi	Q'TY:	7
See Sheet 1				.XX .XX±	CHKD: Schumi	FINISH:	6
				.X .X±	APPD: Jason	MAT'L:	5
				X X±			4
TOLERANCE		LINEAR		ANGLES		TITLE:	
						PCI EXPRESS 1.0mm CARD EDGE ASSY	
						PART NO. 3183-XXXXPXT	
						DWG NO. 318307001	
						UNITS SCALE SHEET REV	
						MM 1:1 4 OF 5 BO	

Umax
DONGGUAN UMAXCONN ENTERPRISE LIMITED
东莞市友贸实业有限公司

TOLERANCE: ±0.05
SINGLE POST TYPE
RECOMMENDED PCB LAYOUT

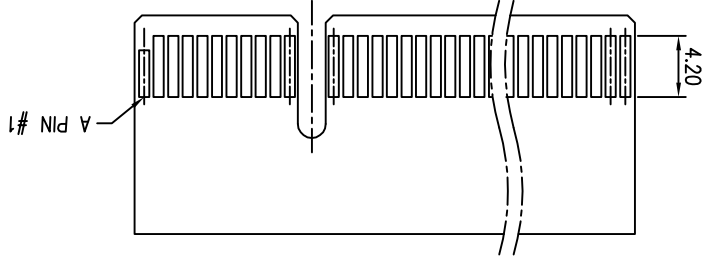


TOLERANCE: ±0.05
POST TYPE & CLIP TYPE
RECOMMENDED PCB LAYOUT

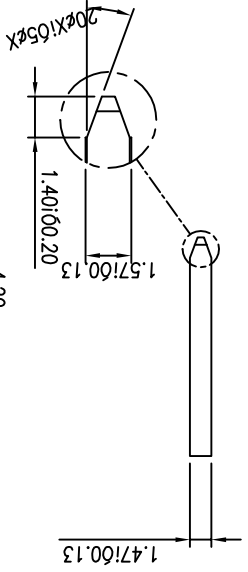
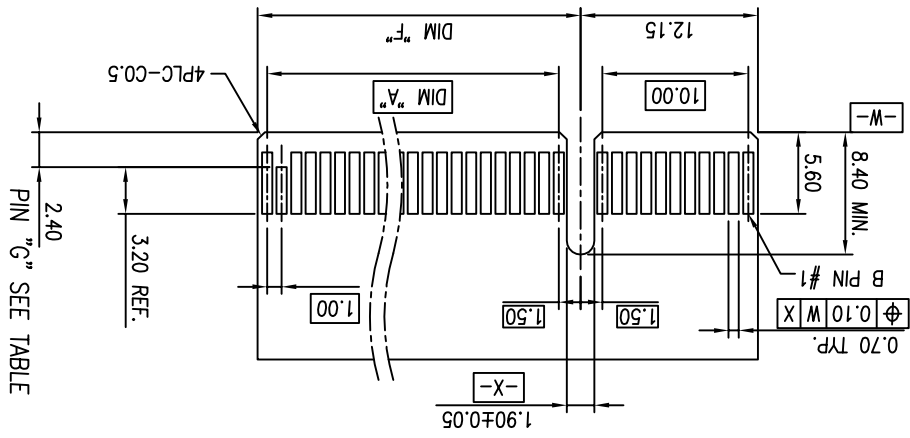


DIMENSIONS		POSITION	
A	B	A	B
B PIN#17	8.15	A	70
B PIN#31	22.15	C	37
B PIN#48	39.15	F ±0.20	164
B PIN#81	72.15		70

I/O PANEL DIRECTION
SECONDARY (SOLDER) SIDE
ADD-IN CARD EDGE-FINGER DIMENSIONS



I/O PANEL DIRECTION
PRIMARY (COMPONENT) SIDE



X-ON Electronics

Largest Supplier of Electrical and Electronic Components

Click to view similar products for [Standard Card Edge Connectors](#) category:

Click to view products by [UMAX](#) manufacturer:

Other Similar products are found below :

[6565204-6](#) [PKC-156](#) [1437274-4](#) [147889-1](#) [1489165-4](#) [EBT156-12B1X](#) [EBT15622B2X](#) [EBT156-22R2W](#) [1-582587-1](#) [1-582589-1](#) [2-6437275-9](#) [284-0102-12100](#) [306022901000000](#) [307-012-502-202](#) [307-024-526-201](#) [307-056-520-300](#) [307-080-526-208](#) [1926088-2](#) [245-062-520-350](#) [287-0032-12101](#) [306-010-500-112](#) [306-028-525-102](#) [306-240-318](#) [307-036-502-202](#) [307-036-521-301](#) [307-072-526-202](#) [345-060-559-303](#) [368-004-520-201](#) [392-008-559-201](#) [534671-1](#) [5-530501-5](#) [341-240-317](#) [345-029-520-300](#) [345-030-500-301](#) [345-044-500-300](#) [345-220-058](#) [346-240-318](#) [387-012-523-300](#) [395-044-520-300](#) [395-100-524-300](#) [50-12B-10](#) [50-6SN-5](#) [09-07-2032](#) [10035388-106LF](#) [10035388-802LF](#) [10115859-011LF](#) [10122859-009LF](#) [101269333204245CLF](#) [10127905-B04B24BLF](#) [530555-1](#)