

REV	ECN NO.	NAME	DATE	TOLERANCE	
				LINEAR	ANGLES
3	---	Lin xuejun	Oct,12,2022	LINEAR	ANGLES
2	---	Lin xuejun	Aug,03,2022	X.±0.40	X'± 3'
1	---	Lin xuejun	Jan,10,2022	.X±0.30	.X'±
0	---	Lei Songping	Jul,13,2021	.XX±0.20	.XX'±
REV	ECN NO.	NAME	DATE	.XXX±0.10	.XXX'±

UMax conn 东莞市友贸实业有限公司
DONGGUAN UMAX ENTERPRISE LIMITED

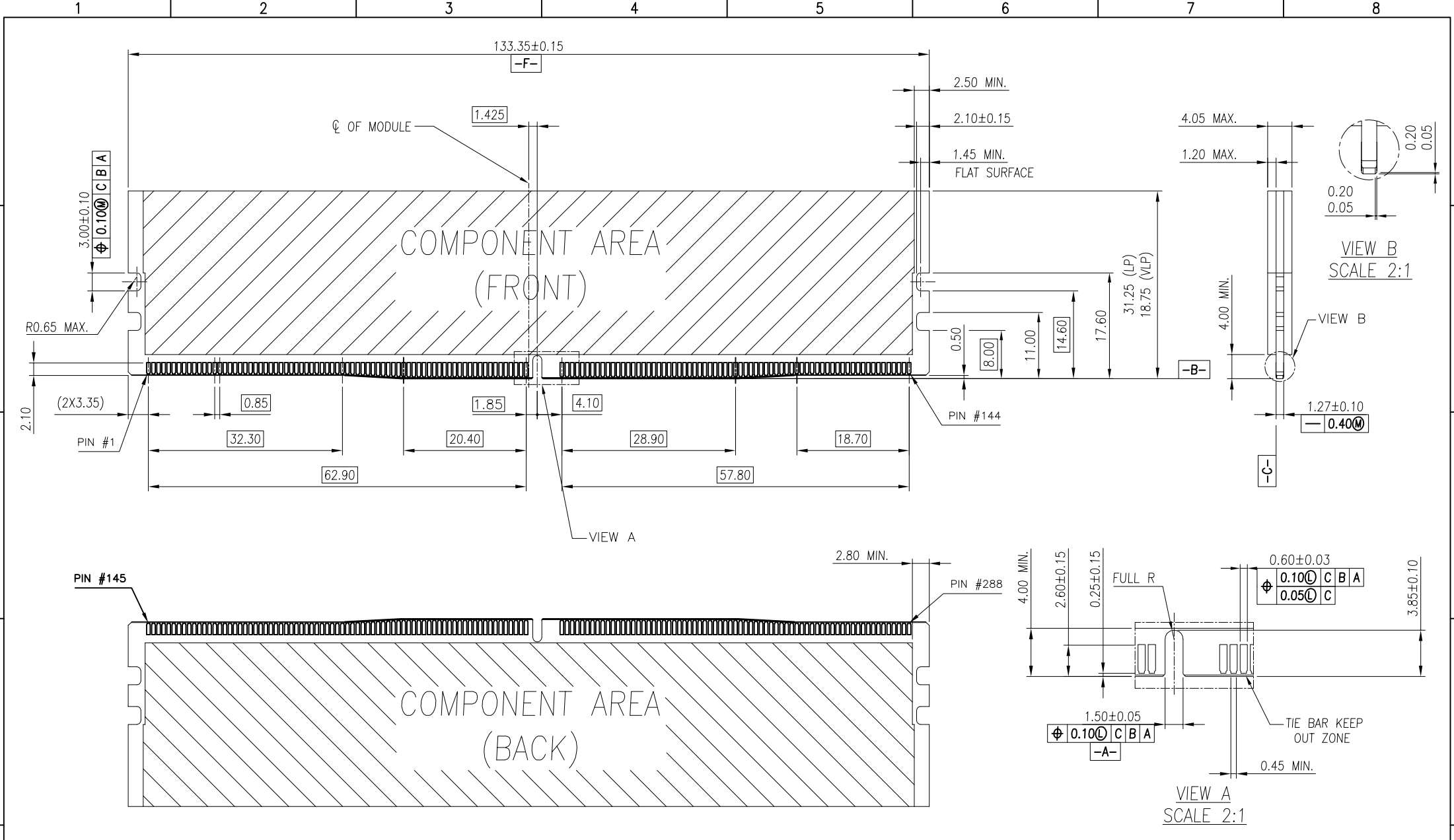
TITLE: DDR 5, 288P MEMORY SOCKET
UDIMM, SMT TYPE CONNECTOR

PART NO. 90414-XX0XX-XX

DWG NO. C-90414

APPD: Jason MAT'L:
CHKD: Schumi FINISH:
DRWN: Lei Songping Q'TY:

UNITS	SCALE	SHEET	REV
MM	1 : 1	1 OF 4	3



TOLERANCE	
LINEAR	ANGLES
X.±0.40	X'± 3'
.X±0.30	.X'±
.XX±0.20	.XX'±
.XXX±0.10	.XXX'±

UMax conn 东莞市友贸实业有限公司
DONGGUAN UMAX ENTERPRISE LIMITED

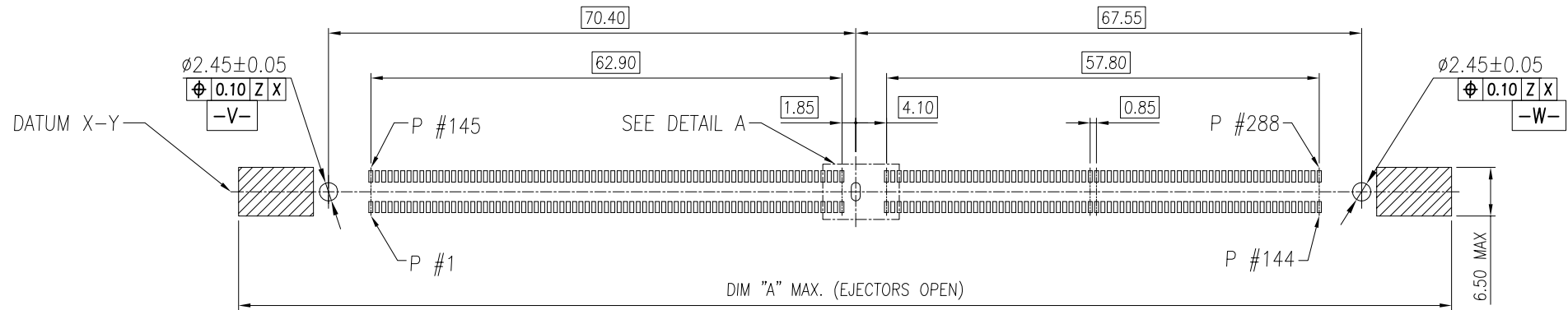
APPD: Jason MAT'L:
CHKD: Schumi FINISH:
DRWN: Lei Songping Q'TY:

TITLE: DDR 5, 288P MEMORY SOCKET
UDIMM, SMT TYPE CONNECTOR

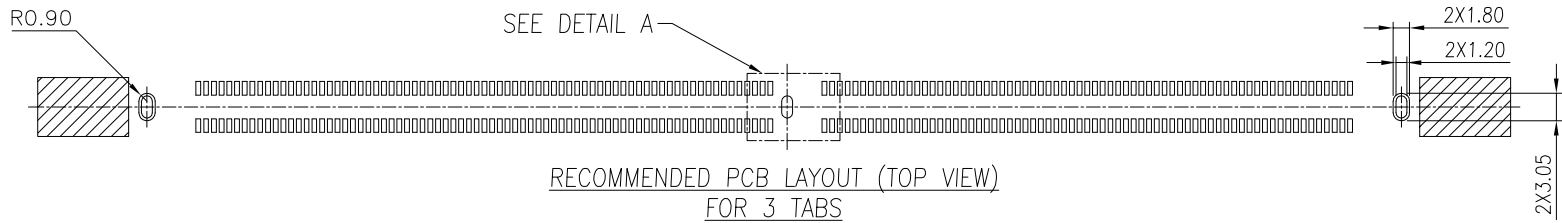
PART NO. 90414-XX0XX-XX
DWG NO. C-90414

UNITS	SCALE	SHEET	REV
MM	1 : 1	2 OF 4	3

REV	SEE SHEET 1	NAME	DATE
	ECN NO.		



RECOMMENDED PCB LAYOUT (TOP VIEW)
FOR 3 BOARDLOCKS



RECOMMENDED PCB LAYOUT (TOP VIEW)
FOR 3 TABS



DETAIL A
SCALE 2:1

TOLERANCE	
LINEAR	ANGLES
X.±0.40	X'± 3'
.X±0.30	.X'±
.XX±0.20	.XX'±
.XXX±0.10	.XXX'±

UMax conn 东莞市友贸实业有限公司
DONGGUAN UMAX ENTERPRISE LIMITED

APPD: Jason MAT'L:

CHKD: Schumi FINISH:

DRWN: Lei Songping Q'TY:

TITLE:		DDR 5, 288P MEMORY SOCKET UDIMM, SMT TYPE CONNECTOR			
PART NO.		90414-XX0XX-XX			
DWG NO.		C-90414			
	UNITS	SCALE	SHEET	REV	
	MM	1 : 1	3 OF 4	3	

SEE SHEET 1			
REV	ECN NO.	NAME	DATE

NOTES:

1. MATERIAL :

- 1.1 HOUSING: HIGH PERFORMANCE RESINS, GLASS FIBER, UL94 V-0, COLOR: SEE PART NO..
- 1.2 LATCH: HIGH PERFORMANCE RESINS, GLASS FIBER, UL94 V-0, COLOR: SEE PART NO..
- 1.3 CONTACTS: COPPER ALLOY.
- 1.4 BOARDLOCK: STAINLESS STEEL.
- 1.5 TABS: STAINLESS STEEL.

2. FINISH :

2.1 CONTACT

- [SEE PART NO..] GOLD PLATING ON THE CONTACT AREA.
- 100u" MIN. MATTE-TIN PLATING ON THE SOLDERING AREA.
- 50u" MIN. NICKEL UNDERPLATING OVERALL.

20.70	147.50	158.50	162.00	LONG
20.30	145.50	156.00	156.00	MIDDLE
20.20	142.00	151.50	152.00	SHORT
DIM. D	DIM. C	DIM. B	DIM. A	LATCH TYPE

PART NO..

90414-XX 0 X X-X X X

CONTACT

- AREA PLATING
- 15: 15u" Au
- 30: 30u" Au

SOLDERTAIL LENGTH

0- FOR SMT TYPE

HOUSING COLOR

- 1: BLACK
- 2: NATURAL
- 3: YELLOW
- 4: BLUE

PACKAGING OPTIONS

- BLANK: HARD TRAY
- M: HARD TRAY WITH MYLAR

BOARDLOCK TYPE

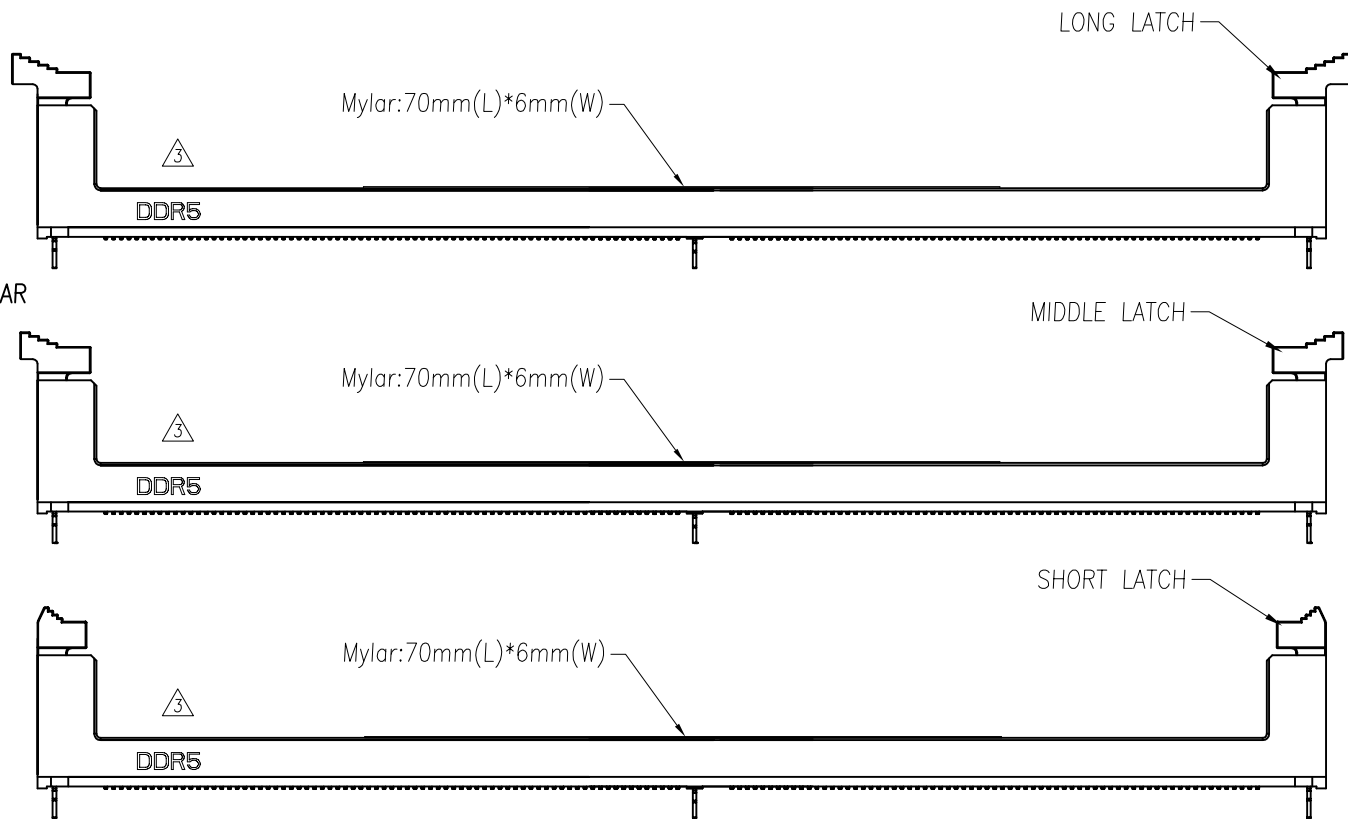
- BLANK: BOARDLOCK
- 1: TAB

LATCH TYPE

- 1: SHORT LATCH
- 2: LONG LATCH
- 3: MIDDLE LATCH

LATCH COLOR

- 1: BLACK
- 2: NATURAL
- 3: YELLOW
- 4: BLUE



TOLERANCE	
LINEAR	ANGLES
X.±0.40	X'± 3'
.X±0.30	.X'±
.XX±0.20	.XX'±
.XXX±0.10	.XXX'±

UMax conn 东莞市友贸实业有限公司
DONGGUAN UMAX ENTERPRISE LIMITED

TITLE: DDR 5, 288P MEMORY SOCKET UDIMM, SMT TYPE CONNECTOR

PART NO. 90414-XX0XX-XX

DWG NO. C-90414

APPD: Jason

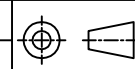
MAT'L:

CHKD: Schumi

FINISH:

DRWN: Lei Songping

Q'TY:



UNITS	SCALE	SHEET	REV
MM	1 : 1	4 OF 4	3

SEE SHEET 1			
REV	ECN NO.	NAME	DATE

X-ON Electronics

Largest Supplier of Electrical and Electronic Components

Click to view similar products for [Standard Card Edge Connectors](#) category:

Click to view products by [UMAX](#) manufacturer:

Other Similar products are found below :

[CR7E-30DB-3.96E\(72\)](#) [6565204-6](#) [1437274-4](#) [EBT15622B2X](#) [1-582587-1](#) [284-0102-12100](#) [286-0052-12101A](#) [306022901000000](#) [307-012-502-202](#) [307-056-520-300](#) [A6D22DS29C2](#) [1926088-2](#) [287-0032-12101](#) [345-060-559-303](#) [392-008-559-201](#) [534671-1](#) [341-240-317](#) [345-044-500-300](#) [346-240-318](#) [387-012-523-300](#) [395-100-524-300](#) [09-07-2032](#) [10035388-802LF](#) [10115859-011LF](#) [10122859-009LF](#) [101269333204245CLF](#) [530555-1](#) [66925-516LF](#) [5145409-2](#) [73726-0005](#) [66308-1](#) [5036A30](#) [PEC-07-02-T-S-A](#) [346-014-520-801](#) [KSLX-62-BR](#) [307-048-502-202](#) [CE100F26-7-C](#) [CE100F28-3-D](#) [CE100F28-4-D](#) [CE156F18-9-C](#) [CE156F22-5-D](#) [CE156F22-9-C](#) [CT100F22-2-D](#) [CT100F22-3-D](#) [CT100F24-2-D](#) [CT100F24-3-D](#) [CT100F24-6-C](#) [CT156F22-4-D](#) [MLSS100-12-C](#) [MLSS100-16-C](#)