

PROVISIONAL

PCB Thickness "DIM. K"	
0	2.08
1	2.30
2	1.80
4	1.57

DIMENSIONS				
POSITION	A±0.20	B ^{+0.20} / _{-0.08}	D ±0.25	E ±0.55
36	6	7.65	25	36.2
64	20	21.65	39	50.2
98	37	38.65	56	67.2
164	70	71.65	89	100.2

				TOLERANCE	
				LINEAR	ANGLES
1	-----	Lin xuejun	Oct,13,2022	.X±0.30	.X'±
0	-----	Lei Songping	Aug,11,2022	.XX±0.20	.XX'±
REV	ECN NO.	NAME	DATE	.XXX±0.10	.XXX'±

UMax conn 东莞市友贸实业有限公司
DONGGUAN UMAX ENTERPRISE LIMITED

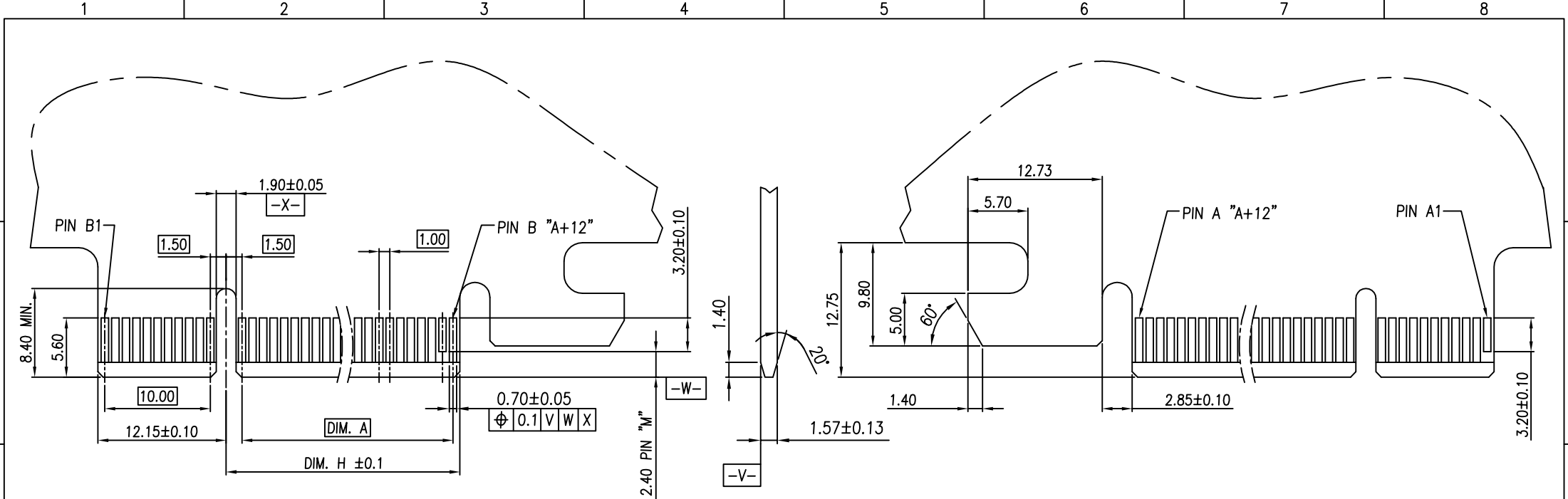
APPD: Jason MAT'L:
CHKD: Schumi FINISH:
DRWN: Lei Songping Q'TY:

TITLE: PCI EXPRESS 4.0
STRADDLE MOUNT TYPE WITH LATCH

PART NO. 91622-110X4DXX

DWG NO. C-91622

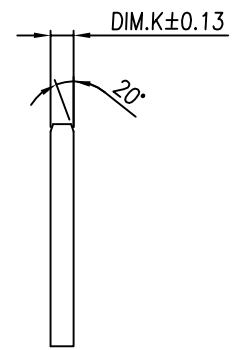
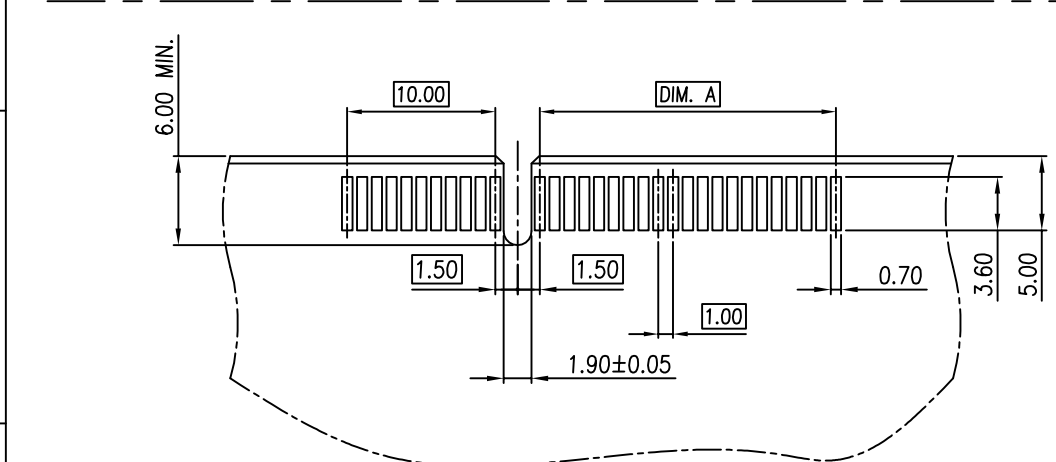
UNITS	SCALE	SHEET	REV
	MM	1 : 1	1 OF 3



← I/O PANEL DIRECTION
PRIMARY (COMPONENT) SIDE

NOTES:
CHAMFER EDGE MUST BE FREE OF CUTTING BURRS

SECONDARY (SOLDER) SIDE



PROVISIONAL

POS.	DIM. A	DIM. H	"M"
36	6	8.15	B17
64	20	22.15	B31
98	37	39.15	B48
164	70	72.15	B81

REV	See Sheet 1	NAME	DATE
ECN NO.			

TOLERANCE	
LINEAR	ANGLES
X.±	X'±
.X±	.X'±
.XX±	.XX'±
.XXX±	.XXX'±

UMax conn 东莞市友贸实业有限公司
DONGGUAN UMAX ENTERPRISE LIMITED

APPD: Jason MAT'L:

CHKD: Schumi FINISH:

DRWN: Lei Songping Q'TY:

TITLE: PCI EXPRESS 4.0 STRADDLE MOUNT TYPE WITH LATCH

PART NO. 91622-110X4XDXX

DWG NO. C-91622

UNITS	SCALE	SHEET	REV
MM	1 : 1	2 OF 3	1

NOTES:

1. MATERIAL:
 - 1.1 HOUSING: THERMOPLASTIC, HIGH TEMP, UL94V-0, COLOR: SEE PART NO.
 - 1.2 LATCH: THERMOPLASTIC, HIGH TEMP, UL94V-0, COLOR: SEE PART NO.
 - 1.3 CONTACTS: COPPER ALLOY.
 - 1.4 DUMMY CARD: THERMOPLASTIC, HIGH TEMP, UL94 V-0, COLOR: BLACK.
2. FINISH:
 - CONTACT:
 - SELECTIVE GOLD PLATING ON THE CONTACT AREA.
 - 100 μ " MIN. MATTE-TIN PLATING ON THE SOLDERTAILS,
 - 50 μ " MIN. NICKEL UNDERPLATING OVERALL.
3. PRODUCT SPEC: PS-GEN4-01
4. PACKAGING SPEC: 6431404001

PART NO.

91622 - 1 1 1 X X X D XX

Ridge Options
1: With Ridge

HSG Color
1: Black Hsg + Natural Latch
2: Black Hsg + Black Latch

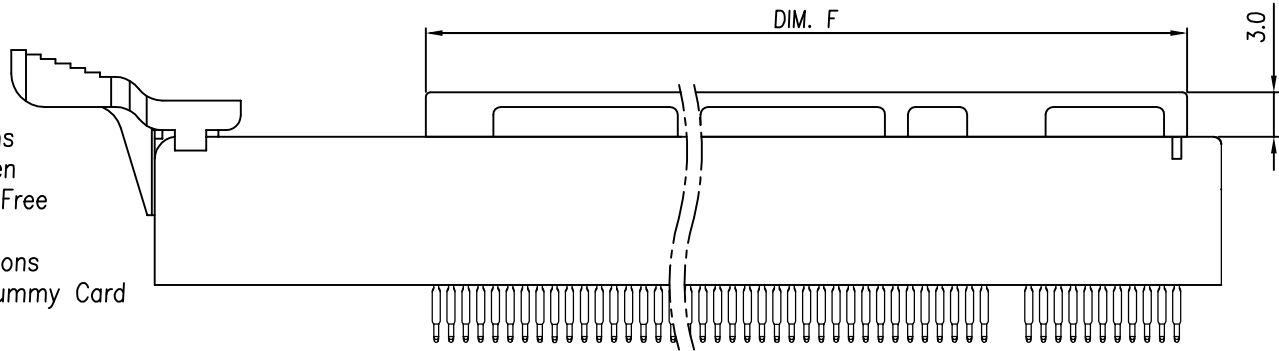
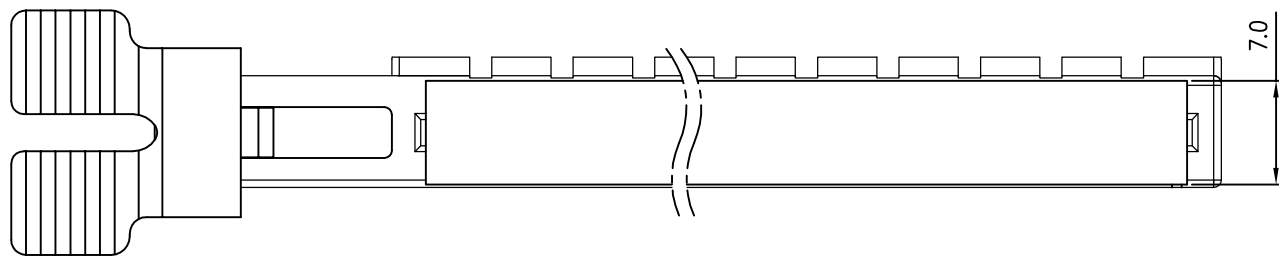
Contact Plating
0: 30u" Gold
1: 15u" Gold
2: Gold Flash

Halogen Options
Blank: Halogen
HF: Halogen Free

Packaging Options
D: Tray + Dummy Card

No. of Pins
0: 36P
1: 64P
2: 98P
3: 164P

PCB Thickness Options "DIM.K"
0: 2.08mm
1: 2.30mm
2: 1.80mm
4: 1.57mm



WITH Dummy Card

PROVISIONAL

DIMENSIONS	
POSITION	DIM. F
36	20.4
64	34.4
98	51.4
164	84.4

TOLERANCE	
LINEAR	ANGLES
X.±	X'.±
.X±	.X'±
.XX±	.XX'±
.XXX±	.XXX'±

UMax conn 东莞市友贸实业有限公司 DONGGUAN UMAX ENTERPRISE LIMITED		TITLE: PCI EXPRESS 4.0 STRADDLE MOUNT TYPE WITH LATCH
APPD: Jason	MAT'L:	PART NO. 91622-110X4XDXX
CHKD: Schumi	FINISH:	DWG NO. C-91622
DRWN: Lei Songping	Q'TY:	

	UNITS	SCALE	SHEET	REV
	MM	1 : 1	3 OF 3	1

See Sheet 1			
REV	ECN NO.	NAME	DATE

X-ON Electronics

Largest Supplier of Electrical and Electronic Components

Click to view similar products for [Standard Card Edge Connectors](#) category:

Click to view products by [UMAX](#) manufacturer:

Other Similar products are found below :

[CR7E-30DB-3.96E\(72\)](#) [6565204-6](#) [1437274-4](#) [1-582587-1](#) [284-0102-12100](#) [286-0052-12101A](#) [306022901000000](#) [A6D22DS29C2](#) [1926088-2](#) [245-062-520-350](#) [287-0032-12101](#) [306-028-525-102](#) [307-072-526-202](#) [330-030-500-278](#) [345-060-559-303](#) [534671-1](#) [341-240-317](#) [345-044-500-300](#) [346-240-318](#) [C7D10DS29C1M133](#) [395-100-524-300](#) [09-07-2032](#) [10035388-802LF](#) [10115859-011LF](#) [10122859-009LF](#) [101269333204245CLF](#) [530555-1](#) [66925-516LF](#) [5145409-2](#) [73726-0005](#) [66308-1](#) [EBC05DRXN](#) [KSLX-62-BR](#) [CE100F26-7-C](#) [CE100F28-3-D](#) [CE100F28-4-D](#) [CE156F22-9-C](#) [CT100F24-3-D](#) [CT100F24-6-C](#) [MLSS100-12-C](#) [SCC100F-11-C](#) [SCC100F-20-C](#) [SCC100F-24-C](#) [SCC100F-25-C](#) [3-530656](#) [2512250177](#) [285-0112-12300](#) [346-068-556-300](#) [284-0492-11000](#) [287-0032-12301](#)