

NOTE:

- MATERIAL: HOUSING: L.C.P (VECTRA E130) UL94V-0
CONTACTS: PHOSPHOR BRONZE, C5191-H
OR BRASS, C2680-H, t=0.465mm or 0.3mm
PAD: BRASS, C2680-H, t=0.3mm.
- FINISH:
CONTACT: SELECTIVE GOLD PLATING ON CONTACT AREA
100u" MIN. TIN PLATING ON SOLDERTAILS
50u" MIN. NICKEL UNDERPLATED OVERALL.
HOLDDOWN: 100u" MIN. TIN PLATING WITH
50u" MIN. NICKEL UNDERPLATED OVERALL.
- Ø IS MAJOR DIMENSION FOR QC

PART NO. CFH-L X C 1 X X X XX M N O

Post Pitch & HSG Type
3: 40.16mm & Normal
4: 40.16mm & Inverse

HSG
L: LCP, Color: Natural
K: LCP, Color: Black
B: Brass
P: Phosphor Bronze

Contact
01: Gold Flash
30: 30u" Gold

Plating
L: Lead Free, Bright
M: Lead Free, Matte

Table 2

Type	Dim	A	B
Normal	1.40mm	0.79mm	1.40mm
Inverse	0.79mm	1.40mm	1.40mm

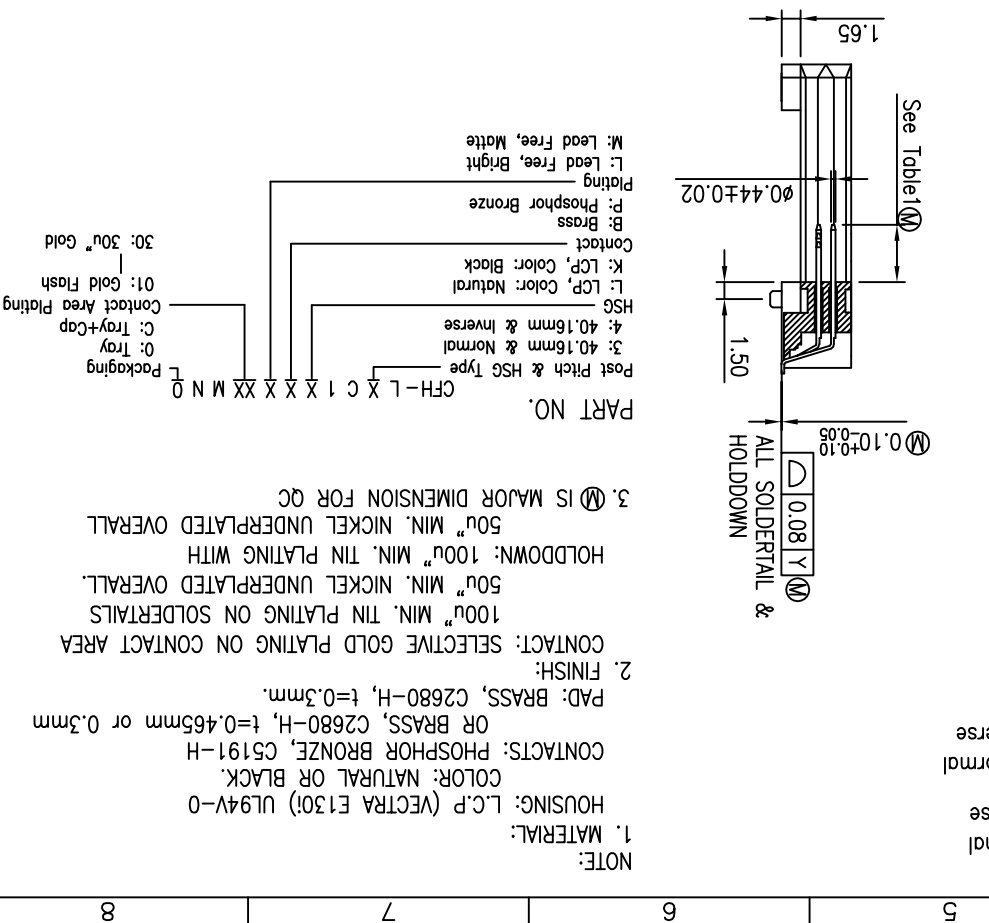
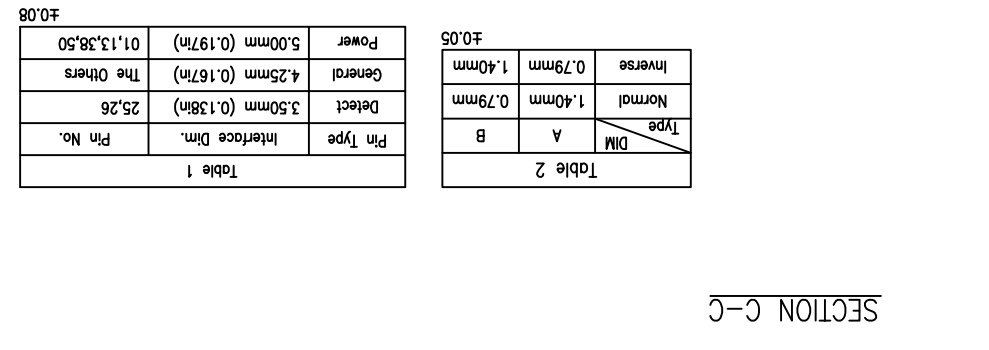
±0.05

Table 1

Pin No.	Interface Dim.	Pin Type	Detect	General	Power
			3.50mm (0.138in)	4.25mm (0.167in)	5.00mm (0.197in)
			25.26	The Others	01,13,38,50

±0.08

REV		ECN NO.	NAME	DATE	.XXX±0.08	.XX±0.15	.XX±	DRWN: Terry	Q'TY:	INSPECTION	
C	07077		Terry	Nov,28,2007	.XX±0.15	.XX±		CHKD: Schumi	FINISH:	MM	1 OF 1
D	08019		Terry	Mar,28,2008	.X±0.20	.X±	Jason	APPD: Jason	MAT'L:	DWG NO.	CF105005
E	09031		Joanne	Jul,22,2009	X±0.30	X±	2			PART NO.	CFH-LXC1XXXXXXMNO
F	09070		Joanne	Nov,25,2009	TOLERANCE		DONGGUAN UMAXCONN ENTERPRISE LIMITED		TITLE: CF Card Header, Type I Post Pitch 40.16mm, With Nut Standoff 1.65mm		



X-ON Electronics

Largest Supplier of Electrical and Electronic Components

Click to view similar products for [Standard Card Edge Connectors](#) category:

Click to view products by [UMAX](#) manufacturer:

Other Similar products are found below :

[6565204-6](#) [PKC-156](#) [1437274-4](#) [147889-1](#) [1489165-4](#) [EBT156-12B1X](#) [EBT15622B2X](#) [EBT156-22R2W](#) [1-582587-1](#) [1-582589-1](#) [2-6437275-9](#) [284-0102-12100](#) [306022901000000](#) [307-012-502-202](#) [307-024-526-201](#) [307-056-520-300](#) [307-080-526-208](#) [1926088-2](#) [245-062-520-350](#) [287-0032-12101](#) [306-010-500-112](#) [306-028-525-102](#) [306-240-318](#) [307-036-502-202](#) [307-036-521-301](#) [307-072-526-202](#) [345-060-559-303](#) [368-004-520-201](#) [392-008-559-201](#) [534671-1](#) [5-530501-5](#) [341-240-317](#) [345-029-520-300](#) [345-030-500-301](#) [345-044-500-300](#) [345-220-058](#) [346-240-318](#) [387-012-523-300](#) [395-044-520-300](#) [395-100-524-300](#) [50-12B-10](#) [50-6SN-5](#) [09-07-2032](#) [10035388-106LF](#) [10035388-802LF](#) [10115859-011LF](#) [10122859-009LF](#) [101269333204245CLF](#) [10127905-B04B24BLF](#) [530555-1](#)