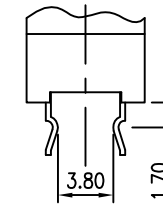
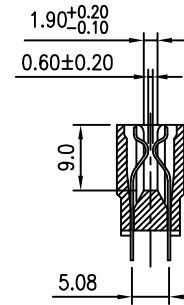


RECOMMENDED PCB LAYOUT
Tolerance: ± 0.05



DETAIL OF KINKED

MATERIAL
INSULATOR: GLASS-REINFORCED THERMOPLASTIC (NY 9T),
UL94V-0 RATED.
CONTACT: COPPER ALLOY.
PLATING: CONTACT AREA- SELECTIVE GOLD OVER NICKEL.
SOLDER AREA- 1u" GOLD OR TIN OVER NICKEL.

ELECTRICAL
DIELECTRIC WITHSTANDING VOLTAGE: 1,000 VAC RMS.
CURRENT RATING: 3 AMP.
INSULATION RESISTANCE: 5,000 MEG. OHMS MIN. AT 500 VDC.
CONTACT RESISTANCE: 20 MILLI OHMS MAX.

MECHANICAL
INSERTION FORCE: 340 GRAMS MAX PER CONTACT PAIR.
WITHDRAWAL FORCE: 28 GRAMS MIN PER CONTACT PAIR.

ENVIRONMENTAL
TEMPERATURE RANGE: -55° TO +85°.

PART NO.

Series No.	SA	98	XX	X	XX	X	Tail Type
SA: Slot 180°							D: No Kink
No Of Pins							02: 2 Pair Kinks
Contact							04: 4 Pair Kinks
B: BRASS+ PBT							06: 6 Pair Kinks
B9: Brass + NY9T							08: 8 Pair Kinks
P9: Phosphor Bronze + NY9T							16: 16 Pair Kinks
Soldertail Plating							Gold Plating
9: 1u" Gold							01: 1u" Gold
L: Lead Free, Bright							10: 10u" Gold
							15: 15u" Gold
							30: 30u" Gold

Pair Of Kinks	Kink Position
4 Pair	A3,A26,A27,C16 & B3,B26,B27,D16
6 Pair	A3,A4,A28,A29,C15,C16 & B3,B4,B28,B29,D15,D16
8 Pair	A2,A3,A24,A25,A28,A29,C16,C17 & B2,B3,B24,B25,B28,B29,D16,D17
16 Pair	A2,A3,A4,A14,A15,A16,A17,A28,A29,A30,A31,C1,C2,C3,C16,C17 & B2,B3,B4,B14,B15,B16,B17,B28,B29,B30,B31,D1,D2,D3,D16,D17

REV	ECN NO.	NAME	DATE	TOLERANCE	
				LINEAR	ANGLES
C	11052	Terry	Jul,07,2011	X.±0.40	X'±
B	11046	Terry	Jun,21,2011	.X±0.30	.X'±
A	07037	Schumi	Jul,04,2007	.XX±0.20	.XX'±
REV	ECN NO.	NAME	DATE	.XXX±0.10	.XXX'±

UMax conn 东莞市友贸实业有限公司 DONGGUAN UMAX ENTERPRISE LIMITED		APPD: Jason	MAT'L:
		CHKD: Schumi	FINISH:
DRWN: Schumi	Q'TY:		

TITLE: CARDEDGE SLOT 98 P, 2.54mm PITCH			
PART NO. SA98XXXXXD		DWG NO. SA09807002	
UNITS	SCALE	SHEET	REV
MM	1 : 1	1 OF 1	C

X-ON Electronics

Largest Supplier of Electrical and Electronic Components

Click to view similar products for [Standard Card Edge Connectors](#) category:

Click to view products by [UMAX](#) manufacturer:

Other Similar products are found below :

[CR7E-30DB-3.96E\(72\)](#) [6565204-6](#) [1437274-4](#) [EBT15622B2X](#) [1-582587-1](#) [284-0102-12100](#) [286-0052-12101A](#) [306022901000000](#) [307-012-502-202](#) [307-056-520-300](#) [A6D22DS29C2](#) [1926088-2](#) [287-0032-12101](#) [345-060-559-303](#) [392-008-559-201](#) [534671-1](#) [341-240-317](#) [345-044-500-300](#) [346-240-318](#) [387-012-523-300](#) [395-100-524-300](#) [09-07-2032](#) [10035388-802LF](#) [10115859-011LF](#) [10122859-009LF](#) [101269333204245CLF](#) [530555-1](#) [66925-516LF](#) [5145409-2](#) [73726-0005](#) [66308-1](#) [5036A30](#) [PEC-07-02-T-S-A](#) [346-014-520-801](#) [KSLX-62-BR](#) [307-048-502-202](#) [CE100F26-7-C](#) [CE100F28-3-D](#) [CE100F28-4-D](#) [CE156F18-9-C](#) [CE156F22-5-D](#) [CE156F22-9-C](#) [CT100F22-2-D](#) [CT100F22-3-D](#) [CT100F24-2-D](#) [CT100F24-3-D](#) [CT100F24-6-C](#) [CT156F22-4-D](#) [MLSS100-12-C](#) [MLSS100-16-C](#)