

Art. 195

Scatola in polipropilene, 1 - 20 scomparti mobili.
Polypropylene box, 1- 20 adjustable compartments.

Dim. ESTERNE / OUTSIDE Dim.:

276x188xh45 mm / 10.87x7.40xh1.77 Inch.

H. INTERNA 40 mm
INTERNAL H. 1.57 inch



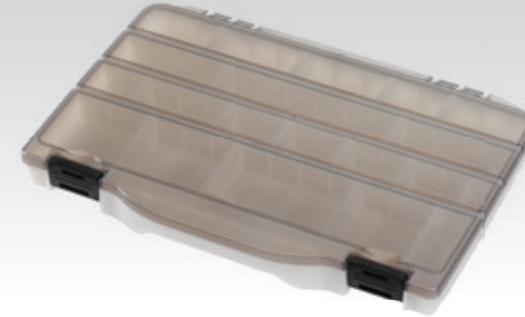
Art. Slim198

4 - 20 scomparti mobili
4 - 20 adjustable compartments

H. INTERNA 24 mm
INTERNAL H. 0.94 inch

Dim. ESTERNE / OUTSIDE Dim.:

mm 276 x 186 x H27 / 10.87 x 7.32 x H1.06 inch.



Art. Slim199

4 - 16 scomparti mobili
4 - 16 adjustable compartments

Dim. ESTERNE / OUTSIDE Dim.:

mm 206 x 147 x H27 / 8.11 x 5.79 x H1.06 inch.



H. INTERNA 24 mm
INTERNAL H. 0.94 inch



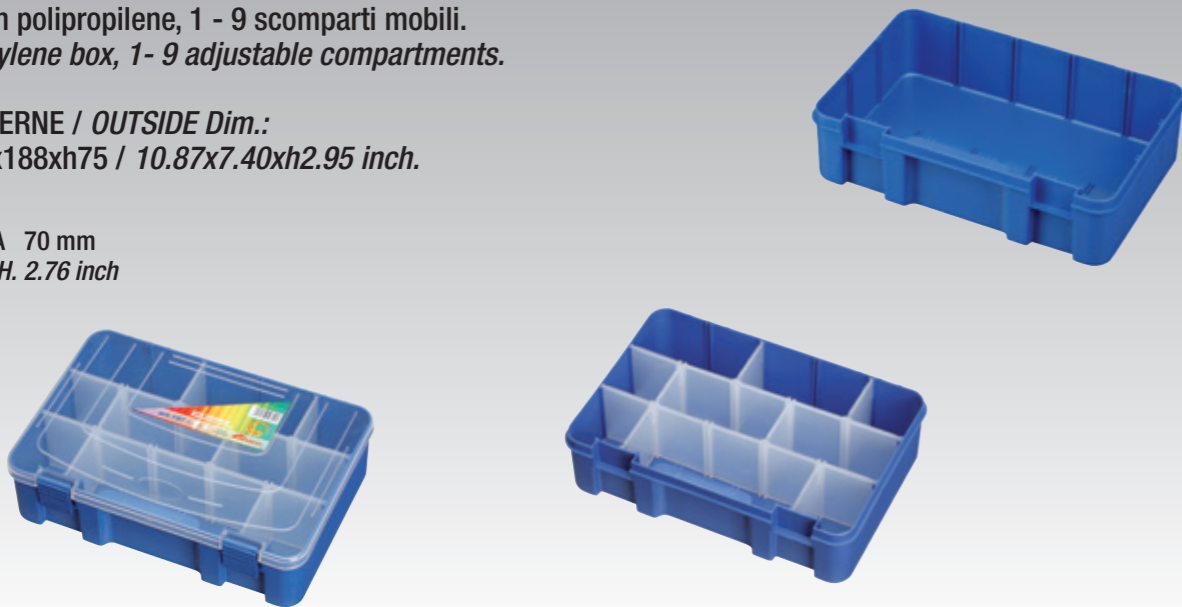
Art. 197

Scatola in polipropilene, 1 - 9 scomparti mobili.
Polypropylene box, 1- 9 adjustable compartments.

Dim. ESTERNE / OUTSIDE Dim.:

mm 276x188xh75 / 10.87x7.40xh2.95 inch.

H. INTERNA 70 mm
INTERNAL H. 2.76 inch



Art. Slim396

8 - 32 scomparti mobili
8 - 32 adjustable compartments

Dim. ESTERNE / OUTSIDE Dim.:

mm 276x186xh59 / 10.86x7.32xh2.32 inch.



X-ON Electronics

Largest Supplier of Electrical and Electronic Components

Click to view similar products for [unbranded manufacturer](#):

Other Similar products are found below :

[BL200H](#) [396.357](#) [AC-9](#) [MODEL 1000](#) [62845](#) [MPT-251](#) [20844](#) [BP00001/36 ROLLS](#) [A1319](#) [MA0510BIM-3PIN](#) [OL1000](#) [JR9235-1M](#)
[BLUE](#) [HT-328](#) [195.303](#) [SB344](#) [029-1039](#) [F2](#) [WATERPROOF CASE 24"](#) [CS-47](#) [MA0410B1M](#) [10HA084](#) [26.514.5026.50](#) [JR9235-1.5M](#)
[RED](#) [029-0058](#) [KLEIN TOOLS SCREWDRIVER 4-IN-1](#) [JR9021-2M](#) [JR9235-1M YELLOW](#) [S2G](#) [029-1044](#) [JR9235-0.5M YELLOW](#)
[199.370](#) [WATERPROOF CASE 10.5"](#) [029-0054](#) [JR9235-0.5M BLUE](#) [JR9235-0.5M GREEN](#) [JR9235-0.5M RED](#) [WATERPROOF CASE 18"](#)
[JR9235-1M RED](#) [JR9235-1M BLACK](#) [JR8001/0.5M BLACK](#) [029-1022](#) [029-0057](#) [15X24X24" SQUARE BIN LINERS, 200 PER BOX](#)