

Flat electrician`s screwdriver TBI

602TBI



Profiles

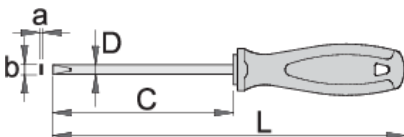


Standards


DIN ISO 2380-1:2006 and DIN ISO 2380-2:2006

Product features

- blade: premium hard chrome vanadium steel, entirely hardened and tempered
- blade chrome plated, black anodised tip
- handle: ergonomic shape
- three component material
- hanging hole

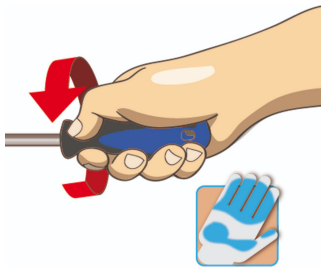


|  | axb | C | L | D |  |
|--|-----------|-----|-----|-----|---|
| 612797 | 0.4 x 2.5 | 60 | 145 | 2.5 | 33 |
| 612798 | 0.4 x 2.5 | 75 | 160 | 2.5 | 33 |
| 611684 | 0.5 x 3.0 | 100 | 185 | 3 | 37 |

|  | axb | C | L | D |  |
|---|-----------|-----|-----|-----|--|
| 612799 | 0.5 x 3.0 | 150 | 235 | 3 | 39 |
| 612800 | 0.6 x 3.5 | 100 | 185 | 3.5 | 39 |
| 612801 | 0.8 x 4.0 | 100 | 185 | 4 | 43 |
| 611685 | 0.8 x 4.0 | 125 | 210 | 4 | 45 |
| 612802 | 0.8 x 4.0 | 150 | 235 | 4 | 48 |
| 612803 | 0.8 x 4.0 | 250 | 335 | 4 | 56 |
| 612804 | 1.0 x 5.5 | 125 | 225 | 5.5 | 75 |
| 611686 | 1.0 x 5.5 | 150 | 250 | 5.5 | 81 |
| 616843 | 1.0 x 5.5 | 280 | 380 | 5.5 | 103 |
| 612805 | 1.2 x 6.5 | 150 | 260 | 6.5 | 113 |
| 616844 | 1.2 x 6.5 | 280 | 390 | 6.5 | 145 |
| 612806 | 1.2 x 8.0 | 175 | 295 | 8 | 163 |

* Images of products are symbolic. All dimensions are in mm, and weight in grams. All listed dimensions may vary in tolerance.

Usage (pictures)



Safety tips



- Use a screw holding screwdriver to get screws started in awkward, hard-to-reach areas.
- Use a stubby screwdriver in close quarters where a conventional screwdriver cannot be used.
- A rounded tip should be redressed with a file; make sure edges are straight.
- Screwdrivers used in the shop are best stored in a rack. This way, the proper selection of the



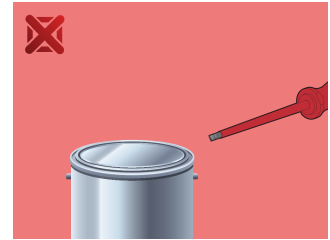
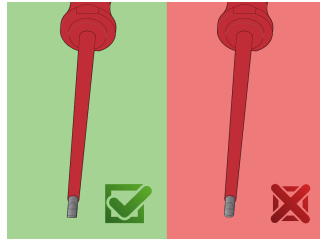
- Don't use pliers on the handle of a screwdriver to get extra turning power. A wrench should only be used on the square shank or bolster of a screwdriver that is especially designed for that purpose.
- Don't expose a screwdriver blade to excessive heat as it may reduce the hardness of the blade.
- Don't use a screwdriver with a split or broken handle.

right screwdriver can be quickly made.

- Keep the screwdriver handle clean; a greasy handle is apt to cause accidents.
- A screwdriver should never be used as pry bar. If it is overstressed in this manner, the blade might break and send a particle of steel into the operator's arm or even towards his eyes.

- Don't use a regular screwdriver to check a storage battery or to determine if an electrical circuit is live.

Safety (pictures)



X-ON Electronics

Largest Supplier of Electrical and Electronic Components

Click to view similar products for [Screwdrivers, Nut Drivers & Socket Drivers](#) category:

Click to view products by [UNIOR](#) manufacturer:

Other Similar products are found below :

[1406504-2](#) [272012M](#) [271001M](#) [30246](#) [HMM-HH](#) [32024](#) [TL10416](#) [612020B](#) [35-045](#) [6951](#) [83](#) [9977](#) [EMF](#) [99833](#) [RB1](#) [S3166V](#) [X103V](#)
[XTD10TP](#) [X108N](#) [HS7N](#) [HS618N](#) [LN25MMN](#) [HS18N](#) [XST1010N](#) [P4N](#) [R146N](#) [P12SN](#) [R5324N](#) [99764N](#) [P8N](#) [99312N](#) [R3163N](#)
[SX101N](#) [LN22N](#) [XTD10N](#) [9955MMN](#) [995MMN](#) [996MMN](#) [LN25N](#) [THS9N](#) [R3166N](#) [R144N](#) [RB2N](#) [HS10N](#) [99964BPN](#) [HS11N](#) [HS12N](#)
[THS8N](#) [TL12N](#) [LN23BPN](#)