

**UNI-ROYAL**  
厚聲集團

# DATA SHEET

**Product Name** Automotive Thick Film Chip Resistors

---

**Part Name** CQ Series

## **Uniroyal Electronics Global Co., Ltd.**

88#, Longteng Road, Economic & Technical Development Zone, Kunshan, Jiangsu, China

Tel +86 512 5763 1411 / 22 /33

Email [marketing@uni-royal.cn](mailto:marketing@uni-royal.cn)

Manufacture Plant Uniroyal Electronics Industry Co., Ltd.

Aeon Technology Corporation

Royal Electronic Factory (Thailand) Co., Ltd.

Royal Technology (Thailand) Co., Ltd.

## 1. Scope

- 1.1 This datasheet is the characteristics of Automotive Thick Film Chip Resistors manufactured by UNI-ROYAL Application automobile.  
 1.2 The test items follow the test standard of AEC-Q200.  
 1.3 Anti-Sulfidation  
 1.4 Application car、IPAD、LED Lamps、 Intelligent home appliances , Medical equipment, Kinds of industrial control devices & industrial supplies

## 2. Part No. System

Part No. includes 14 codes shown as below:

2.1 1<sup>st</sup>~4<sup>th</sup> codes: Part name. E.g.: CQ01,CQ02,CQ03,CQ05,CQ06,CQ07,CQ10,CQ12

2.2 5<sup>th</sup>~6<sup>th</sup> codes: Power rating.

E.g.: W=Normal Size	“1~G” = “1~16”								
Wattage	3/4	1/2	1/4	1/8	1/10	1/16	1/20	1	
Normal Size	07	W2	W4	W8	WA	WG	WM	1W	

If power rating is equal or lower than 1 watt, 5<sup>th</sup> code would be “W” and 6<sup>th</sup> code would be a number or letter.

E.g.: WA=1/10W                      W4=1/4W

2.3 7<sup>th</sup> code: Tolerance. E.g.: D=±0.5%      F=±1%                      G=±2%                      J=±5%                      K= ±10%

2.4 8<sup>th</sup>~11<sup>th</sup> codes: Resistance Value.

2.4.1 If value belongs to standard value of E-24 series, the 8<sup>th</sup> code is zero, 9<sup>th</sup>~10<sup>th</sup> codes are the significant figures of resistance value, and the 11<sup>th</sup> code is the power of ten.

2.4.2 If value belongs to standard value of E-96 series, the 8<sup>th</sup>~10<sup>th</sup> codes are the significant figures of resistance value, and the 11<sup>th</sup> code is the power of ten.

2.4.3 11<sup>th</sup> codes listed as following:

0=10<sup>0</sup>    1=10<sup>1</sup>    2=10<sup>2</sup>    3=10<sup>3</sup>    4=10<sup>4</sup>    5=10<sup>5</sup>    6=10<sup>6</sup>    J=10<sup>-1</sup>    K=10<sup>-2</sup>    L=10<sup>-3</sup>    M=10<sup>-4</sup>

2.5 12<sup>th</sup>~14<sup>th</sup> codes.

2.5.1 12<sup>th</sup> code: Packaging Type. E.g.: C=Bulk                      T=Tape/Reel

2.5.2 13<sup>th</sup> code: Standard Packing Quantity.

4=4,000pcs    5=5,000pcs    C=10,000pcs    D=20,000pcs    E=15,000pcs

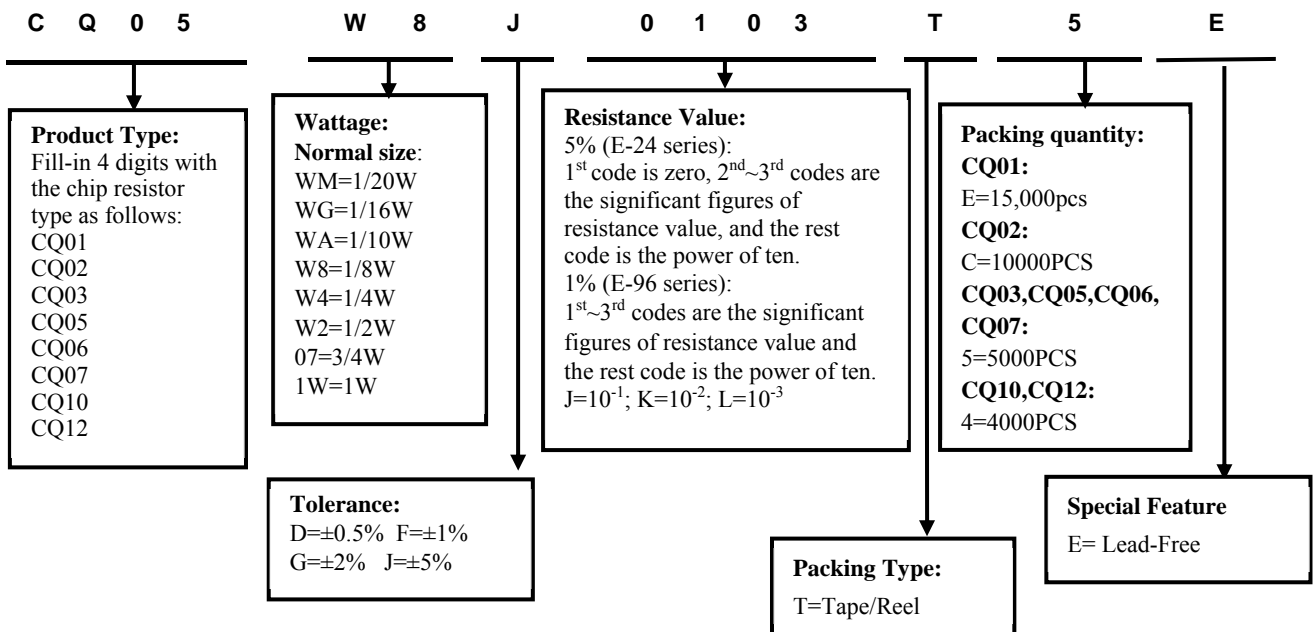
Chip Product: BD=B/B-20000pcs    TC=T/R-10000pcs

2.5.3 14<sup>th</sup> code: Special features.

E = Environmental Protection, Lead Free, or Standard type.

## 3. Ordering Procedure

(Example: CQ05 1/8W ±5% 10K Ω T/R-5000 )



## 4. Marking

4.1 Normally, the making of CQ01,CQ02 resistors as following



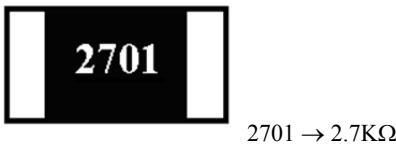
4.2 Normally, the making of 0Ω CQ03, 0Ω CQ05, 0Ω CQ06, 0Ω CQ07, 0Ω CQ10, 0Ω CQ12, resistors as following



4.3 ±5% tolerance products (E-24 series):  
 3 codes.  
 1<sup>st</sup>~2<sup>nd</sup> codes are the significant figures of resistance value,  
 and the rest code is the power of ten.

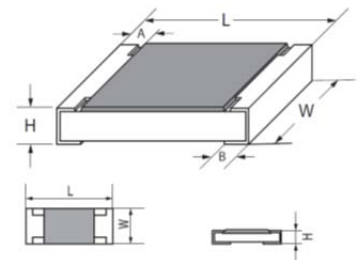


4.4 ±1% tolerance products (E-96 series):  
 4 codes.  
 1<sup>st</sup>~3<sup>rd</sup> codes are the significant figures of resistance value,  
 and the rest code is the power of ten.  
 Letter "R" in mark means decimal point.



## 5. Dimension

Type	Dimension(mm)				
	L	W	H	A	B
CQ01(0201)	0.60±0.03	0.30±0.03	0.23±0.03	0.12±0.05	0.15±0.05
CQ02(0402)	1.00±0.10	0.50±0.05	0.35±0.05	0.20±0.10	0.25±0.10
CQ03(0603)	1.60±0.10	0.80±0.10	0.45±0.10	0.30±0.20	0.30±0.20
CQ05(0805)	2.00±0.15	1.25 +0.15/-0.10	0.55±0.10	0.40±0.20	0.40±0.20
CQ06(1206)	3.10±0.15	1.55+0.15/-0.10	0.55±0.10	0.45±0.20	0.45±0.20
CQ07(1210)	3.10±0.10	2.60±0.20	0.55±0.10	0.50±0.25	0.50±0.20
CQ10(2010)	5.00±0.10	2.50±0.20	0.55±0.10	0.60±0.25	0.50±0.20
CQ12(2512)	6.35±0.10	3.20±0.20	0.55±0.10	0.60±0.25	0.50±0.20



## 6. Resistance Range

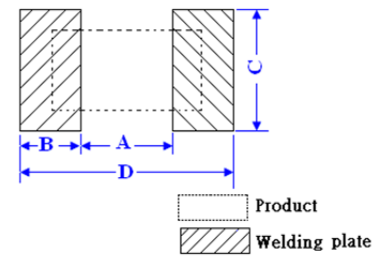
Type	Power Rating	Resistance Range	
		1.0%	5.0%
CQ01	1/20W	1Ω-10MΩ	1Ω-10MΩ
CQ02	1/16W	1Ω-10MΩ	1Ω-10MΩ
CQ03	1/10W	1Ω-10MΩ	1Ω-10MΩ
CQ05	1/8W	1Ω-10MΩ	1Ω-10MΩ
CQ06	1/4W	1Ω-10MΩ	1Ω-10MΩ
CQ07	1/2W	1Ω-10MΩ	1Ω-10MΩ
CQ10	3/4W	1Ω-10MΩ	1Ω-10MΩ
CQ12	1W	1Ω-10MΩ	1Ω-10MΩ

## 7. Ratings

Type	Max. Working Voltage	Max. Overload Voltage	Dielectric withstanding Voltage	Resistance Value of Jumper	Rated Current of Jumper	Max. Overload Current of Jumper	Operating Temperature
CQ01	25V	50V	/	<50mΩ	0.5A	1A	-55℃~155℃
CQ02	50V	100V	100V	<50mΩ	1A	2A	-55℃~155℃
CQ03	75V	150V	300V	<50mΩ	1A	2A	-55℃~155℃
CQ05	150V	300V	500V	<50mΩ	2A	5A	-55℃~155℃
CQ06	200V	400V	500V	<50mΩ	2A	10A	-55℃~155℃
CQ07	200V	500V	500V	<50mΩ	2A	10A	-55℃~155℃
CQ10	200V	500V	500V	<50mΩ	2A	10A	-55℃~155℃
CQ12	200V	500V	500V	<50mΩ	2A	10A	-55℃~155℃

## 8. Soldering pad size recommended

Type	Dimension(mm)			
	A	B	C	D
CQ01	0.3±0.05	0.35±0.05	0.4±0.05	1.0±0.05
CQ02	0.50±0.05	0.45±0.05	0.5±0.05	1.4±0.05
CQ03	0.8±0.05	0.65±0.05	0.8±0.05	2.1±0.05
CQ05	1.0±0.1	1.0±0.1	1.3±0.1	3.0±0.1
CQ06	2.0±0.1	1.1±0.1	1.6±0.1	4.2±0.1
CQ07	2.0±0.1	1.1±0.1	2.6±0.1	4.2±0.1
CQ10	3.6±0.1	1.3±0.1	2.6±0.1	6.2±0.1
CQ12	4.9±0.1	1.6±0.1	3.3±0.1	8.1±0.1



## 9. Derating Curve

Power rating will change based on continuous load at ambient temperature from -55 to 155°C. It is constant between -55 to 70°C, and derate to zero when temperature rise from 70 to 155°C.

Voltage rating:

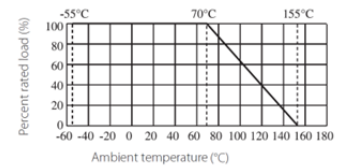
Resistors shall have a rated direct-current (DC) continuous working voltage or an approximate sine-wave root-mean-square (RMS) alternating-current (AC) continuous working voltage at commercial-line frequency and waveform corresponding to the power rating, as determined from the following formula:

$$RCWV = \sqrt{P \times R}$$

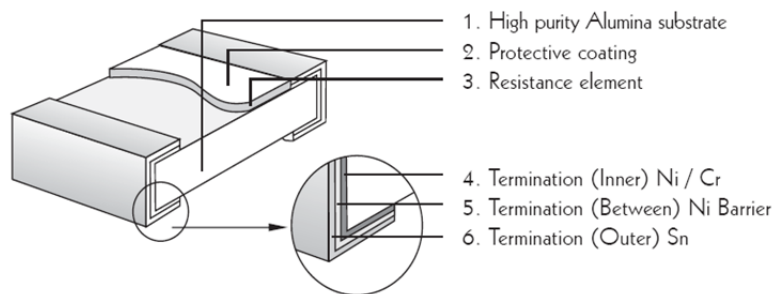
Remark: RCWV: Rating Continuous Working Voltage (Volt.) P: power rating (Watt) R: nominal resistance (Ω)

In no case shall the rated DC or RMS AC continuous working voltage be greater than the applicable maximum value.

The overload voltage is 2.5 times RCWV or Max. Overload voltage whichever is lower.



## 10. Structure



## 11. Performance Specification

Characteristic	Limits	Ref. Standards	Test Methods
Operational life	±5%: ±(3.0%+0.1Ω) ±1%: ±(1.0%+0.1Ω)	MIL-STD-202	125°C, at 36% of operating power, 1000H(1.5 hours "ON", 0.5 hour "OFF").
	<100mΩ		Apply to rate current for 0 Ω
Electrical Characterization	CQ01: 1Ω≤R≤10Ω: -100~+350PPM/°C >10Ω: ±200PPM/°C CQ02~CQ12: 1Ω≤R≤10Ω: ±200PPM/°C >10Ω: ±100PPM/°C	User Spec	Parametrically test per lot and sample size requirements, summary to show Min, Max, Mean and Standard deviation at room as well as Min and Max operating temperatures.
Short-time overload	±1%: ±(1.0%+0.05Ω) ±5%: ±(2.0%+0.05Ω)	JIS-C-5201	4.13 Permanent resistance change after the application of a potential of 2.5 times RCWV or Max. Overload Voltage whichever less for 5 seconds..
	<50mΩ		Apply max Overload current for 0Ω
External Visual	No Mechanical Damage	MIL-STD-883 Method 2009	Electrical test not required. Inspect device construction, marking and workmanship
Physical Dimension	Reference 2.0 Dimension Standards	JESD22 MH Method JB-100	Verify physical dimensions to the applicable device detail specification. Note: User(s) and Suppliers spec. Electrical test not required.
Resistance to Solvent	Marking Unsmearred	MIL-STD-202 Method 215	Note: Add Aqueous wash chemical – OKEM Clean or equivalent. Do not use banned solvents.

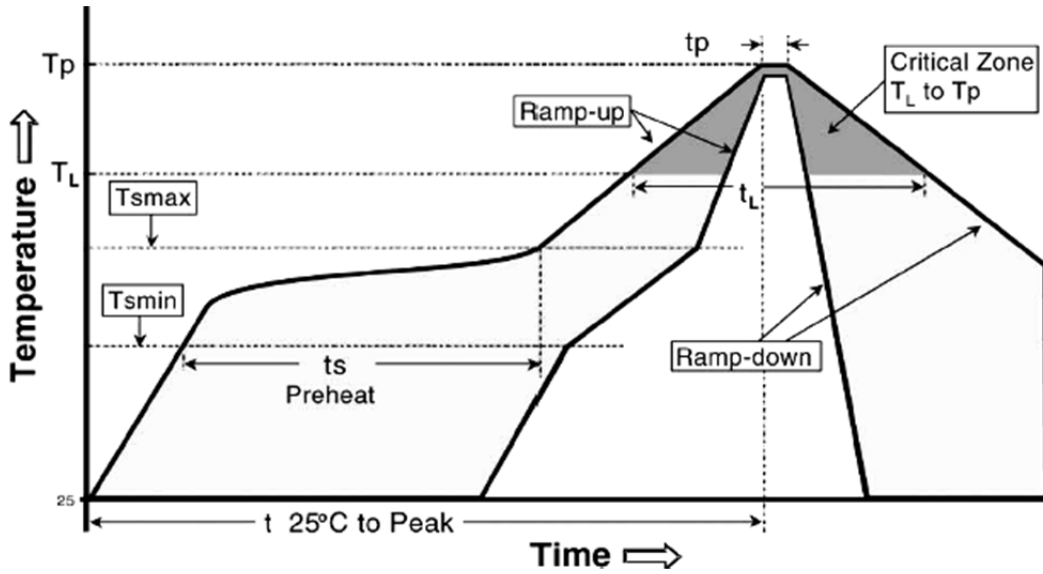
Terminal Strength	Not broken	JIS-C-6429	Force of 1.8kg for 60 seconds.
High Temperature Exposure (Storage)	$\pm(1.0\%+0.1\Omega)$	MIL-STD-202 Method 108	1000hrs. @T=155°C. Unpowered. Measurement at 24 $\pm$ 2 hours after test conclusion.
	<50m $\Omega$		Apply to rate current for 0 $\Omega$
Temperature Cycling	$\pm(1.0\%+0.1\Omega)$	JESD22 Method JA-104	1000 Cycles (-55°C to +155°C). Measurement at 24 $\pm$ 2 hours after test conclusion.
	<50m $\Omega$		Apply to rate current for 0 $\Omega$
Biased Humidity	$\pm 5\%: \pm(3.0\%+0.05\Omega)$ $\pm 1\%: \pm(1.0\%+0.05\Omega)$	MIL-STD-202 Method 103	1000 hours 85°C, 85%RH. Note: Specified conditions: 10% of operating power. Measurement at 24 $\pm$ 2 hours after test conclusion.
	<100m $\Omega$		Apply to rate current for 0 $\Omega$
Mechanical Shock	$\pm(1.0\%+0.1\Omega)$	MIL-STD-202 Method 213	Wave Form: Tolerance for half sine shock pulse. Peak value is 100g's. Normal duration (D) is 6.
Vibration	$\pm(1.0\%+0.1\Omega)$	MIL-STD-202 Method 204	5g's for 20 min., 12cycle each of 3 orientations. Note: Use 8''*5''PCB. 031'' thick 7 secure points on one long side and 2 secure points at corners of opposite sides. Parts mounted within 2' from any secure point. Test from 10-2000Hz.
ESD	$\pm(1.0\%+0.1\Omega)$	AEC-Q200-002	With the electrometer in direct contact with the discharge tip, verify the voltage setting at levels of $\pm 500V, \pm 1KV, \pm 2KV, \pm 4KV, \pm 8KV$ , The electrometer reading shall be within $\pm 10\%$ for voltages from 500V to $\leq 800V$ .
Solderability	Coverage must be over 95%.	J-STD-020E	For both leaded & SMD. Electrical test not required. Magnification 50X. Conditions: a) Method B 4hrs at 155°C dry heat, the dip in bath with 245°C, 5s. b) Method D: at 260°C, 30 $\pm$ 0.5s.
Flammability	No ignition of the tissue paper or scorching or the pinewood board	UL-94	V-0 or V-1 are acceptable. Electrical test not required.
Board Flex	$\pm(1.0\%+0.05\Omega)$	JIS-C-6429	2mm (Min)
	<50m $\Omega$		Apply to rate current for 0 $\Omega$
Flame Retardance	No flame	AEC-Q200-001	Only requested, when voltage/power will increase the surface temp to 350°C. Apply voltage from 9V to 32V. No flame; No explosion.
Resistance to Soldering Heat	$\pm(1.0\%+0.05\Omega)$	MIL-STD-202 Method 210	Condition B No per-heat of samples. Note: Single Wave Solder-Procedure 2 for SMD and Procedure 1 for Leaded with solder within 1.5mm of device body.
	<50m $\Omega$		Apply to rate current for 0 $\Omega$
Sulfuration test	$\pm(1.0\%+0.05\Omega)$	ASTM B-809-95	sulfur(saturated vapor), Temperature: 50 $\pm$ 2°C Humidity: 86 ~ 90%RH, 1000H.

Sulfuration test: H<sub>2</sub>S 3~5PPM 50°C $\pm$ 2°C 91%~93%RH 1000H $\pm 5\%: (5.0\%+0.05\Omega)$ ;  $\pm 1\%: (1.0\%+0.05\Omega)$

11. Soldering Condition

(This is for recommendation, please customer perform adjustment according to actual application)

11.1 Recommend Reflow Soldering Profile : (solder : Sn96.5 / Ag3 / Cu0.5)

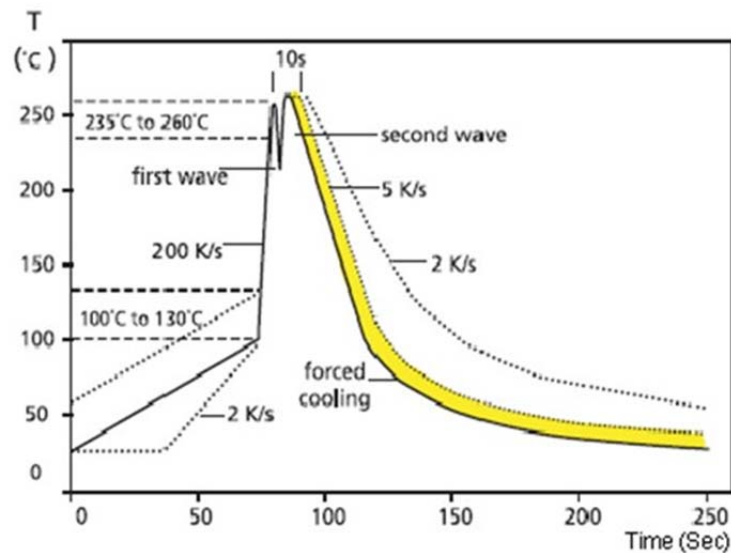


Profile Feature	Lead (Pb)-Free solder
Preheat: Temperature Min ( $T_{s_{min}}$ ) Temperature Max ( $T_{s_{max}}$ ) Time ( $T_{s_{min}}$ to $T_{s_{max}}$ ) ( $t_s$ )	150°C 200°C 60 -120seconds
Average ramp-up rate: ( $T_{s_{max}}$ to $T_p$ )	3°C / second max.
Time maintained above : Temperature ( $T_L$ ) Time ( $t_L$ )	217°C 60-150 seconds
Peak Temperature ( $T_p$ )	260°C
Time within $+0$ $-5$ of actual peak Temperature ( $t_p$ ) <sup>2</sup>	10 seconds
Ramp-down Rate	6°C/second max.
Time 25°C to Peak Temperature	8minutes max.

Allowed Re-flow times : 2 times

Remark : To avoid discoloration phenomena of chip on terminal electrodes, please use N2 Re-flow furnace .

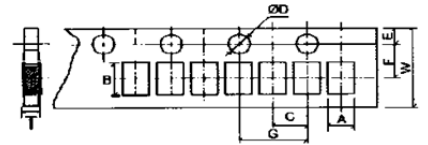
11.2 Recommend Wave Soldering Profile : (Apply to 0603 and above size)



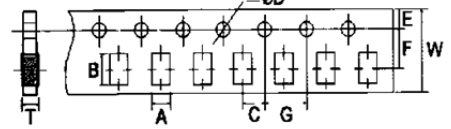
## 12. Packing

### 12.1 Dimension of Paper Taping :(Unit: mm)

Type	A	B	C ±0.05	$\Phi D_{-0}^{+0.1}$	E ±0.1	F ±0.05	G ±0.1	W ±0.2	T
CQ01	0.40±0.05	0.70±0.05	2.00	1.50	1.75	3.50	4.00	8.00	0.42±0.1
CQ02	0.65±0.1	1.20±0.1	2.00	1.50	1.75	3.50	4.00	8.00	0.42±0.05

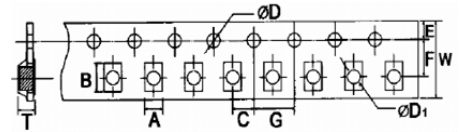


Type	A ±0.2	B ±0.2	C ±0.05	$\Phi D_{-0}^{+0.1}$	E ±0.1	F ±0.05	G ±0.1	W ±0.2	T ±0.1
CQ03	1.10	1.90	2.00	1.50	1.75	3.50	4.00	8.00	0.67
CQ05	1.65	2.40	2.00	1.50	1.75	3.50	4.00	8.00	0.81
CQ06	2.00	3.60	2.00	1.50	1.75	3.50	4.00	8.00	0.81
CQ07	2.80	3.50	2.00	1.50	1.75	3.50	4.00	8.00	0.75



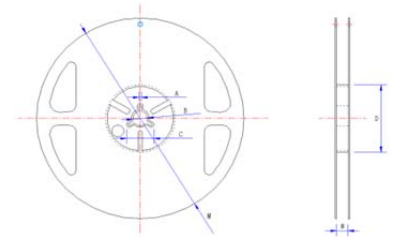
### 12.2 Dimension of plastic taping: (Unit: mm)

Type	A ±0.2	B ±0.2	C ±0.05	$\Phi D_{-0}^{+0.1}$	$\Phi D1_{-0}^{+0.25}$	E ±0.1	F ±0.05	G ±0.1	W ±0.2	T ±0.1
CQ10	2.90	5.60	2.00	1.50	1.50	1.75	5.50	4.00	12.00	1.00
CQ12	3.50	6.70	2.00	1.50	1.50	1.75	5.50	4.00	12.00	1.00



### 12.3 Dimension of Reel : (Unit: mm)

Type	Taping	Qty/Reel	A±0.5	B±0.5	C±0.5	D±1	M±2	W±1
CQ01	Paper	15,000pcs	2.0	13.0	21.0	60.0	178.0	10.0
CQ02	Paper	10,000pcs	2.0	13.0	21.0	60.0	178.0	10.0
CQ03	Paper	5,000pcs	2.0	13.0	21.0	60.0	178.0	10.0
CQ05	Paper	5,000pcs	2.0	13.0	21.0	60.0	178.0	10.0
CQ06	Paper	5,000pcs	2.0	13.0	21.0	60.0	178.0	10.0
CQ07	Paper	5,000pcs	2.0	13.0	21.0	60.0	178.0	10.0
CQ10	Embossed	4,000pcs	2.0	13.0	21.0	60.0	178.0	13.8
CQ12	Embossed	4,000pcs	2.0	13.0	21.0	60.0	178.0	13.8



## 13. Note

13.1. UNI-ROYAL recommend products store in warehouse with temperature between 15 to 35°C under humidity between 25 to 75%RH.

Even under storage conditions recommended above, solder ability of products will be degraded stored over 1 year old.

13.2. Cartons must be placed in correct direction which indicated on carton, otherwise the reel or wire will be deformed.

13.3. Storage conditions as below are inappropriate:

- Stored in high electrostatic environment
- Stored in direct sunshine, rain, snow or condensation.

13.4 This product is used for automotive electronics. UNI-ROYAL will not be responsible for any damage, expense or loss caused by the use of this specification in any special environment. This series of products are suitable for automotive electronics applications, as shown below, if there are other applications, you need to confirm with UNI-ROYAL whether they are applicable:

- Control unit for information, entertainment, navigation, audio;
- Control unit for comfortable doors, windows, seat;
- Control unit for internal lighting.

**14. Record**

Version	Description	Page	Date	Amended by	Checked by
1	First version	1~7	Mar.20, 2018	Haiyan Chen	Nana Chen
2	Modify the product name	1~7	Nov.22, 2018	Haiyan Chen	Nana Chen
3	Modify characteristic	5~6	Feb.16, 2019	Haiyan Chen	Yuhua Xu
4	Experimental method and standard for adding vulcanization	6	Mar.05, 2019	Haiyan Chen	Yuhua Xu
5	1.Modify the reflow curve and add the wave soldering curve	6	Apr.30, 2020	Haiyan Chen	Yuhua Xu
	2. Notes for improvement	7			

© Uniroyal Electronics Global Co., Ltd. All rights reserved. Specification herein will be changed at any time without prior notice



## X-ON Electronics

Largest Supplier of Electrical and Electronic Components

*Click to view similar products for [Thick Film Resistors - SMD category](#):*

*Click to view products by [Uniroyal manufacturer](#):*

Other Similar products are found below :

[CR-05FL7--150R](#) [CR-05FL7--698K](#) [CR-12FP4--324R](#) [CR-12JP4--680R](#) [M55342K06B10D0RS6](#) [M55342K06B14E0RS6](#)  
[M55342K06B1E78RS3](#) [M55342K06B24E9RS6](#) [M55342K06B6E19RWL](#) [M55342K06B6E81RS3](#) [M55342M05B200DRWB](#)  
[M55342M06B4K70MS3](#) [MC0603-511-JTW](#) [742C083750JTR](#) [MCR01MZPF1202](#) [MCR01MZPF1601](#) [MCR01MZPF1800](#)  
[MCR01MZPF6201](#) [MCR01MZPF9102](#) [MCR01MZPJ113](#) [MCR01MZPJ121](#) [MCR01MZPJ125](#) [MCR01MZPJ751](#) [MCR03EZHJ103](#)  
[MCR03EZPF2004](#) [MCR03EZPJ270](#) [MCR03EZPJ821](#) [MCR10EZPF1102](#) [MCR10EZPF2700](#) [MCR18EZPJ330](#) [RC1005F1152CS](#)  
[RC1005F1182CS](#) [RC1005F1372CS](#) [RC1005F183CS](#) [RC1005F1911CS](#) [RC1005F1912CS](#) [RC1005F203CS](#) [RC1005F2052CS](#)  
[RC1005F241CS](#) [RC1005F2431CS](#) [RC1005F3011CS](#) [RC1005F303CS](#) [RC1005F4321CS](#) [RC1005F4642CS](#) [RC1005F471CS](#)  
[RC1005F4751CS](#) [RC1005F5621CS](#) [RC1005F6041CS](#) [RC1005J106CS](#) [RC1005J121CS](#)