

# LBG Series

- For airbag application
- High capacitance, low impedance, and good low temperature behavior
- Endurance with ripple current : 5,000 hours at 105°C
- Solvent resistant type (see PRECAUTIONS AND GUIDELINES)
- RoHS Compliant



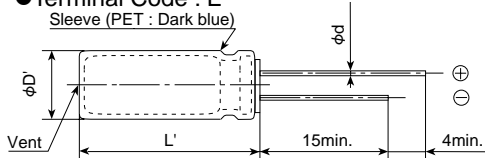
## ◆ SPECIFICATIONS

Items	Characteristics		
Category			
Temperature Range	-55 to +105°C		
Rated Voltage Range	25 & 35V <sub>dc</sub>		
Capacitance Range	1,000 to 11,000µF (at 20°C, 120Hz)		
Capacitance Tolerance	0 to +30% (A) (at 20°C, 120Hz)		
Leakage Current	I=0.01CV Where, I : Max. leakage current (µA), C : Nominal capacitance (µF), V : Rated voltage (V) (at 20°C after 2 minutes)		
Dissipation Factor (tanδ)	Rated voltage (V <sub>dc</sub> )	25V	35V
	tanδ (Max.)	0.20	0.16
	When nominal capacitance exceeds 1,000µF, add 0.02 to the value above for each 1,000µF increase. (at 20°C, 120Hz)		
Low Temperature Characteristics (Max. Impedance Ratio)	Rated voltage (V <sub>dc</sub> )	25V	35V
	Z(-55°C)/Z(+20°C)	3	3
	Impedance at -40°C and 20°C 100kHz in the STANDARD RATINGS (at 120Hz)		
Endurance	The following specifications shall be satisfied when the capacitors are restored to 20°C after subjected to DC voltage with the rated ripple current is applied for 5,000 hours at 105°C.		
	Capacitance change	≤±20% of the initial value	
	D.F. (tanδ)	≤200% of the initial specified value	
	Leakage current	≤The initial specified value	
Shelf Life	The following specifications shall be satisfied when the capacitors are restored to 20°C after exposing them for 1,000 hours at 105°C without voltage applied. Before the measurement, the capacitor shall be preconditioned by applying voltage according to Item 4.1 of JIS C 5101-4.		
	Capacitance change	≤±20% of the initial value	
	D.F. (tanδ)	≤200% of the initial specified value	
	Leakage current	≤The initial specified value	

## ◆ DIMENSIONS [mm]

### ● Terminal Code : E

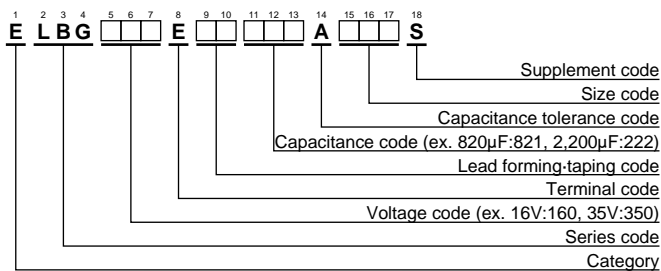
Sleeve (PET : Dark blue)



Gas escape end seal

φD	12.5	14.5	16	18
φd	0.6	0.8	0.8	0.8
F	5.0	7.5	7.5	7.5
φD'	φD+0.5max.			
L'	L+1.5max.			

## ◆ PART NUMBERING SYSTEM



Please refer to "Product code guide (radial lead type)"

**◆STANDARD RATINGS**

VV (Vdc)	Cap ( $\mu$ F)	Case size $\phi$ D×L(mm)	Impedance ( $\Omega$ max/100kHz)		Rated ripple current (mA <sub>rms</sub> /105°C,100kHz)	Part No.
			20°C	-40°C		
25	1,700	12.5 × 20	0.057	0.29	1,700	ELBG250E□□172AK20S
	2,400	12.5 × 25	0.045	0.23	2,000	ELBG250E□□242AK25S
	2,400	14.5 × 20	0.051	0.26	2,000	ELBG250E□□242AU20S
	2,800	12.5 × 30	0.039	0.20	2,300	ELBG250E□□282AK30S
	3,000	16 × 20	0.044	0.22	2,250	ELBG250E□□302AL20S
	3,400	14.5 × 25	0.041	0.21	2,400	ELBG250E□□342AU25S
	3,500	12.5 × 35	0.033	0.17	2,700	ELBG250E□□352AK35S
	4,200	16 × 25	0.033	0.17	2,600	ELBG250E□□422AL25S
	4,200	18 × 20	0.042	0.21	2,500	ELBG250E□□422AM20S
	4,500	12.5 × 40	0.027	0.14	3,100	ELBG250E□□452AK40S
	4,600	14.5 × 31.5	0.032	0.16	2,700	ELBG250E□□462AUN3S
	5,400	14.5 × 35.5	0.028	0.14	3,100	ELBG250E□□542AUP1S
	5,600	16 × 31.5	0.026	0.13	3,200	ELBG250E□□562ALN3S
	6,000	18 × 25	0.030	0.15	2,800	ELBG250E□□602AM25S
	6,400	14.5 × 40	0.025	0.13	3,400	ELBG250E□□642AU40S
	6,600	16 × 35.5	0.023	0.12	3,500	ELBG250E□□662ALP1S
	7,800	16 × 40	0.021	0.11	3,800	ELBG250E□□782AL40S
7,900	18 × 31.5	0.024	0.12	3,500	ELBG250E□□792AMN3S	
9,200	18 × 35.5	0.022	0.11	3,700	ELBG250E□□922AMP1S	
11,000	18 × 40	0.020	0.10	4,000	ELBG250E□□113AM40S	
35	1,000	12.5 × 20	0.057	0.29	1,700	ELBG350E□□102AK20S
	1,400	12.5 × 25	0.045	0.23	2,000	ELBG350E□□142AK25S
	1,400	14.5 × 20	0.051	0.26	2,000	ELBG350E□□142AU20S
	1,600	12.5 × 30	0.039	0.20	2,300	ELBG350E□□162AK30S
	1,800	16 × 20	0.044	0.22	2,250	ELBG350E□□182AL20S
	2,000	14.5 × 25	0.041	0.21	2,400	ELBG350E□□202AU25S
	2,100	12.5 × 35	0.033	0.17	2,700	ELBG350E□□212AK35S
	2,500	16 × 25	0.033	0.17	2,600	ELBG350E□□252AL25S
	2,500	18 × 20	0.042	0.21	2,500	ELBG350E□□252AM20S
	2,700	12.5 × 40	0.027	0.14	3,100	ELBG350E□□272AK40S
	2,800	14.5 × 31.5	0.032	0.16	2,700	ELBG350E□□282AUN3S
	3,200	14.5 × 35.5	0.028	0.14	3,100	ELBG350E□□322AUP1S
	3,400	16 × 31.5	0.026	0.13	3,200	ELBG350E□□342ALN3S
	3,600	18 × 25	0.030	0.15	2,800	ELBG350E□□362AM25S
	3,800	14.5 × 40	0.025	0.13	3,400	ELBG350E□□382AU40S
	4,000	16 × 35.5	0.023	0.12	3,500	ELBG350E□□402ALP1S
	4,700	16 × 40	0.021	0.11	3,800	ELBG350E□□472AL40S
4,800	18 × 31.5	0.024	0.12	3,500	ELBG350E□□482AMN3S	
5,600	18 × 35.5	0.022	0.11	3,700	ELBG350E□□562AMP1S	
6,700	18 × 40	0.020	0.10	4,000	ELBG350E□□672AM40S	

□□ : Enter the appropriate lead forming or taping code.

**◆RATED RIPPLE CURRENT MULTIPLIERS**
**●Frequency Multipliers**

Capacitance ( $\mu$ F)	Frequency (Hz)			
	120	1k	10k	100k
1,000 to 2,000	0.60	0.87	0.95	1.00
2,100 to 3,800	0.75	0.90	0.95	1.00
4,000 to 11,000	0.85	0.95	0.98	1.00

The endurance of capacitors is reduced with internal heating produced by ripple current at the rate of halving the lifetime with every 5°C rise. When long life performance is required in actual use, the rms ripple current has to be reduced.

## X-ON Electronics

Largest Supplier of Electrical and Electronic Components

*Click to view similar products for [Aluminium Electrolytic Capacitors - Radial Leaded](#) category:*

*Click to view products by [United Chemicon](#) manufacturer:*

Other Similar products are found below :

[LXY50VB4.7M-5X11](#) [B41041A2687M8](#) [B41041A7226M8](#) [B41044A7157M6](#) [EPA-201ELL151MM25S](#) [NCD681K10KVY5PF](#) [KM4700/16](#)  
[KME50VB100M-8X11.5](#) [SG220M1CSA-0407](#) [ES5107M016AE1DA](#) [ESRL25V330](#) [ESX472M16B](#) [SZ010M1500A5S-1015](#) [227RZS050M](#)  
[476CKH100MSA](#) [477CKR100M](#) [KME25VB100M-6.3X11](#) [XRL50V22](#) [052687X](#) [107CKR010M](#) [EKMA500ELL4R7ME07D](#)  
[RGA221M1CTA-0611G](#) [ERZA630VHN182UP54N](#) [UPL1A331MPH](#) [MAL214658821E3](#) [MAL214658122E3](#) [SK106M016AC3KAKPLP](#)  
[SK107M025AE3EAKPLP](#) [B43827A1106M8](#) [B41022A5686M6](#) [EKMA160EC3101MF07D](#) [ESMG160ETD221MF11D](#)  
[EKZH160ETD152MJ20S](#) [EKMA350ELL100ME07D](#) [ESMG160ETD101ME11D](#) [EGXF500ELL561ML15S](#) [SK107M025AE3KAKPLP](#)  
[EKMG350ETD471MJ16S](#) [MEA562M2W--D130](#) [35YXA330MEFC10X12.5](#) [RGA221M2ABK-1320G](#) [ERR1HM1R0D11OT](#)  
[ERR1CM222W20OT](#) [TM1081EMF202RB](#) [RXQ271M2EBK-1836](#) [RXW103M1CBK-1840](#) [B41896C5278M](#) [B41851A8107M000](#)  
[B41888G6108M000](#) [EKMA160ETD470MF07D](#)