



LARGE CAPACITANCE ALUMINUM ELECTROLYTIC CAPACITORS long life screw terminals, 105°C

LXA Series

- Rated voltage range up to 525V_{dc}
- Endurance with ripple current : 5,000 hours at 105°C (2,000 hours for 500V_{dc} & 525V_{dc})
- RoHS2 Compliant

LXA

Long life
KMH

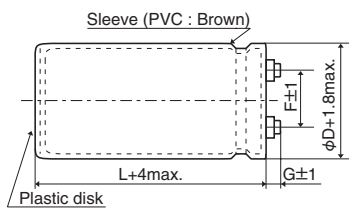


◆SPECIFICATIONS

| Items | Characteristics | | | | | | | | | | | | |
|--|---|--------------------------------------|-----------------------------|---------------------------|--------------------------------------|-----------------------------|------------------------------|--------------|--------------------------------------|--------------------------------------|-----------------|------------------------------|------------------------------|
| Category | -40 to +105°C (10 to 100V _{dc}) -25 to +105°C (160 to 525V _{dc}) | | | | | | | | | | | | |
| Temperature Range | | | | | | | | | | | | | |
| Rated Voltage Range | 10 to 525V _{dc} | | | | | | | | | | | | |
| Capacitance Tolerance | -10 to +50% (T) (10 to 250V _{dc}) ±20% (M) (350 to 525V _{dc}) (at 20°C, 120Hz) | | | | | | | | | | | | |
| Leakage Current | I=0.02CV or 5mA, whichever is smaller. Where, I : Max. leakage current (μA), C : Nominal capacitance (μF), V : Rated voltage (V) (at 20°C after 5 minutes) | | | | | | | | | | | | |
| Dissipation Factor (tan δ) | See STANDARD RATINGS (10 to 250V _{dc}) 0.20max. (350 to 525V _{dc}) (at 20°C, 120Hz) | | | | | | | | | | | | |
| Low Temperature Characteristics | Capacitance change C(-40°C)/C(+20°C)≥0.6(10 to 100V _{dc}) C(-25°C)/C(+20°C)≥0.7(160 to 250V _{dc}) C(-25°C)/C(+20°C)≥0.65(350 to 525V _{dc}) (at 120Hz) | | | | | | | | | | | | |
| Insulation Resistance | When measured between the terminals that are connected to each other and to the mounting clamp on the insulating sleeve covering the case by using an insulation resistance meter of 500V _{dc} , the insulation resistance shall not be less than 100MΩ. | | | | | | | | | | | | |
| Insulation Withstanding Voltage | When a voltage of 2,000V _{ac} is applied for 1 minute between the terminals that are connected to each other and to the mounting clamp on the insulating sleeve covering the case, there shall not be electrical damage. | | | | | | | | | | | | |
| Endurance | The following specifications shall be satisfied when the capacitors are restored to 20°C after subjected to DC voltage with the rated ripple current is applied (the peak voltage shall not exceed the rated voltage) for 5,000 hours (2,000 hours for 500 & 525V _{dc} products) at 105°C. <table border="1" style="width: 100%; border-collapse: collapse;"> <tr> <td>Capacitance change</td> <td>≤ ±20% of the initial value</td> </tr> <tr> <td>D.F. (tan δ)</td> <td>≤200% of the initial specified value</td> </tr> <tr> <td>Leakage current</td> <td>≤The initial specified value</td> </tr> </table> | Capacitance change | ≤ ±20% of the initial value | D.F. (tan δ) | ≤200% of the initial specified value | Leakage current | ≤The initial specified value | | | | | | |
| Capacitance change | ≤ ±20% of the initial value | | | | | | | | | | | | |
| D.F. (tan δ) | ≤200% of the initial specified value | | | | | | | | | | | | |
| Leakage current | ≤The initial specified value | | | | | | | | | | | | |
| Shelf Life | The following specifications shall be satisfied when the capacitors are restored to 20°C after exposing them for 1,000 hours at 105°C without voltage applied. Before the measurement, the capacitor shall be preconditioned by applying voltage according to Item 4.1 of JIS C 5101-4. <table border="1" style="width: 100%; border-collapse: collapse;"> <tr> <td>Rated voltage</td> <td>10 to 250V_{dc}</td> <td>350 to 525V_{dc}</td> </tr> <tr> <td>Capacitance change</td> <td>≤ ±15% of the initial value</td> <td>≤ ±20% of the initial value</td> </tr> <tr> <td>D.F. (tan δ)</td> <td>≤150% of the initial specified value</td> <td>≤200% of the initial specified value</td> </tr> <tr> <td>Leakage current</td> <td>≤The initial specified value</td> <td>≤The initial specified value</td> </tr> </table> | Rated voltage | 10 to 250V _{dc} | 350 to 525V _{dc} | Capacitance change | ≤ ±15% of the initial value | ≤ ±20% of the initial value | D.F. (tan δ) | ≤150% of the initial specified value | ≤200% of the initial specified value | Leakage current | ≤The initial specified value | ≤The initial specified value |
| Rated voltage | 10 to 250V _{dc} | 350 to 525V _{dc} | | | | | | | | | | | |
| Capacitance change | ≤ ±15% of the initial value | ≤ ±20% of the initial value | | | | | | | | | | | |
| D.F. (tan δ) | ≤150% of the initial specified value | ≤200% of the initial specified value | | | | | | | | | | | |
| Leakage current | ≤The initial specified value | ≤The initial specified value | | | | | | | | | | | |

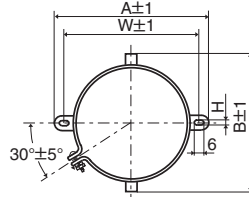
◆DIMENSIONS (Screw-Mount) [mm]

●Terminal Code : LG



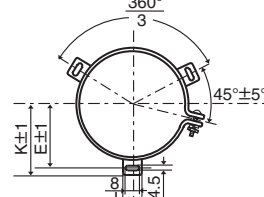
| φD | G | |
|--------|--------------------------|---------------------------|
| | 10 to 250V _{dc} | 350 to 525V _{dc} |
| ~φ63.5 | 6 | 6 |
| φ76.2 | 5 | 6 |
| φ89 | 5 | 4 |

●Mounting Clamp Code : B



| φD | A | B | W | H | F |
|------|-------|----|------|-----|------|
| 35 | 58 | 44 | 48 | 3.5 | 12.7 |
| 50 | 78 | 64 | 68 | 4.5 | 22.4 |
| 63.5 | 90 | 76 | 80 | 4.5 | 28.0 |
| 76.2 | 104.5 | 90 | 93.5 | 4.5 | 31.5 |

●Mounting Clamp Code : C



| φD | E | K | J | F |
|------|------|------|------|------|
| 50 | 32.5 | 37.0 | 14.0 | 22.4 |
| 63.5 | 38.1 | 43.5 | 14.0 | 28.0 |
| 76.2 | 44.5 | 50.0 | 14.0 | 31.5 |
| 89 | 50.8 | 56.5 | 16.0 | 31.5 |

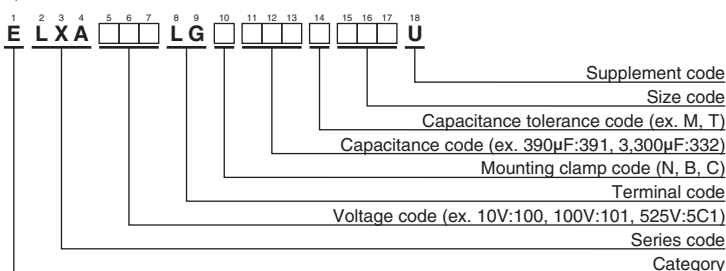
<Screw specifications>

Plus hexagon-headed screw :M5×0.8×10

Maximum screw tightening torque :3.23Nm

* The screw and the mounting clamp are separately supplied and not attached to the product.

◆PART NUMBERING SYSTEM



Please refer to "Product code guide (screw-mount terminal type)"



LARGE CAPACITANCE ALUMINUM ELECTROLYTIC CAPACITORS long life screw terminals, 105°C

LXASeries

◆ **STANDARD RATINGS**

| WV (V _{dc}) | Cap (μF) | Case size φD×L(mm) | tan δ | Rated ripple current (Arms/105°C, 120Hz) | Part No. | WV (V _{dc}) | Cap (μF) | Case size φD×L(mm) | tan δ | Rated ripple current (Arms/105°C, 120Hz) | Part No. | |
|-----------------------|------------|--------------------|-------|--|--------------------|-----------------------|------------|--------------------|--------------------|--|--------------------|--------------------|
| 10 | 27,000 | 35 × 80 | 0.45 | 4.30 | ELXA100LGB273TA80U | 50 | 10,000 | 35 × 80 | 0.25 | 3.70 | ELXA500LGB103TA80U | |
| | 33,000 | 35 × 80 | 0.45 | 4.70 | ELXA100LGB333TA80U | | 12,000 | 35 × 100 | 0.25 | 4.40 | ELXA500LGB123TAA0U | |
| | 39,000 | 35 × 80 | 0.45 | 5.30 | ELXA100LGB393TA80U | | 15,000 | 35 × 120 | 0.30 | 4.70 | ELXA500LGB153TAC0U | |
| | 47,000 | 35 × 100 | 0.45 | 6.10 | ELXA100LGB473TAA0U | | 18,000 | 50 × 80 | 0.35 | 4.80 | ELXA500LGC183TC80U | |
| | 56,000 | 35 × 100 | 0.50 | 6.20 | ELXA100LGB563TAA0U | | 22,000 | 50 × 100 | 0.35 | 5.90 | ELXA500LGC223TCA0U | |
| | 68,000 | 35 × 120 | 0.60 | 6.80 | ELXA100LGB683TAC0U | | 27,000 | 50 × 120 | 0.35 | 7.00 | ELXA500LGC273TCC0U | |
| | 82,000 | 50 × 80 | 0.60 | 7.80 | ELXA100LGC823TC80U | | 33,000 | 63.5 × 100 | 0.40 | 7.60 | ELXA500LGC333TDA0U | |
| | 100,000 | 50 × 100 | 0.70 | 8.50 | ELXA100LGC104TCA0U | | 39,000 | 63.5 × 120 | 0.40 | 8.90 | ELXA500LGC393TDC0U | |
| | 120,000 | 50 × 100 | 0.70 | 9.50 | ELXA100LGC124TCA0U | | 47,000 | 63.5 × 120 | 0.40 | 9.80 | ELXA500LGC473TDC0U | |
| | 150,000 | 63.5 × 100 | 0.80 | 11.0 | ELXA100LGC154TDA0U | | 56,000 | 76.2 × 120 | 0.40 | 11.9 | ELXA500LGC563TEC0U | |
| | 180,000 | 63.5 × 100 | 0.80 | 12.1 | ELXA100LGC184TDA0U | | 68,000 | 76.2 × 140 | 0.45 | 13.1 | ELXA500LGC683TFC0U | |
| | 220,000 | 76.2 × 100 | 1.00 | 13.2 | ELXA100LGC224TEA0U | | 82,000 | 89 × 140 | 0.50 | 14.8 | ELXA500LGC823TFE0U | |
| | 270,000 | 76.2 × 120 | 1.20 | 14.4 | ELXA100LGC274TEC0U | | 63 | 2,700 | 35 × 50 | 0.15 | 1.90 | ELXA630LGB272TA50U |
| | 330,000 | 76.2 × 140 | 1.20 | 17.0 | ELXA100LGC334TEE0U | | | 3,300 | 35 × 50 | 0.15 | 2.10 | ELXA630LGB332TA50U |
| 390,000 | 89 × 140 | 1.40 | 18.6 | ELXA100LGC394TFE0U | 3,900 | 35 × 80 | | 0.20 | 2.70 | ELXA630LGB392TA80U | | |
| 16 | 15,000 | 35 × 50 | 0.45 | 2.90 | ELXA160LGB153TA50U | 4,700 | | 35 × 80 | 0.20 | 2.90 | ELXA630LGB472TA80U | |
| | 18,000 | 35 × 80 | 0.45 | 3.50 | ELXA160LGB183TA80U | 5,600 | | 35 × 80 | 0.20 | 3.20 | ELXA630LGB562TA80U | |
| | 22,000 | 35 × 80 | 0.45 | 3.90 | ELXA160LGB223TA80U | 6,800 | | 35 × 80 | 0.20 | 3.50 | ELXA630LGB682TA80U | |
| | 27,000 | 35 × 80 | 0.45 | 4.30 | ELXA160LGB273TA80U | 8,200 | | 35 × 100 | 0.20 | 4.20 | ELXA630LGB822TAA0U | |
| | 33,000 | 35 × 100 | 0.50 | 4.80 | ELXA160LGB333TAA0U | 10,000 | | 35 × 120 | 0.25 | 4.30 | ELXA630LGB103TAC0U | |
| | 39,000 | 35 × 100 | 0.50 | 5.30 | ELXA160LGB393TAA0U | 12,000 | | 50 × 80 | 0.25 | 4.80 | ELXA630LGC123TC80U | |
| | 47,000 | 35 × 120 | 0.50 | 6.20 | ELXA160LGB473TAC0U | 15,000 | | 50 × 100 | 0.25 | 5.90 | ELXA630LGC153TCA0U | |
| | 56,000 | 50 × 80 | 0.60 | 6.30 | ELXA160LGC563TC80U | 18,000 | | 50 × 120 | 0.25 | 6.30 | ELXA630LGC183TCC0U | |
| | 68,000 | 50 × 100 | 0.60 | 7.60 | ELXA160LGC683TCA0U | 22,000 | | 50 × 120 | 0.30 | 6.70 | ELXA630LGC223TCC0U | |
| | 82,000 | 50 × 120 | 0.70 | 8.30 | ELXA160LGC823TCC0U | 27,000 | | 63.5 × 120 | 0.30 | 8.80 | ELXA630LGC273TDC0U | |
| | 100,000 | 50 × 120 | 0.70 | 9.20 | ELXA160LGC104TCC0U | 33,000 | | 76.2 × 100 | 0.30 | 10.0 | ELXA630LGC333TEA0U | |
| | 120,000 | 63.5 × 100 | 0.80 | 9.90 | ELXA160LGC124TDA0U | 39,000 | 76.2 × 120 | 0.35 | 10.7 | ELXA630LGC393TEC0U | | |
| | 150,000 | 76.2 × 100 | 0.80 | 12.3 | ELXA160LGC154TEA0U | 47,000 | 76.2 × 140 | 0.35 | 12.5 | ELXA630LGC473TFE0U | | |
| | 180,000 | 76.2 × 120 | 0.80 | 14.5 | ELXA160LGC184TEC0U | 56,000 | 89 × 140 | 0.40 | 13.8 | ELXA630LGC563TFE0U | | |
| 220,000 | 76.2 × 140 | 1.00 | 15.2 | ELXA160LGC224TEE0U | 80 | 2,200 | 35 × 50 | 0.15 | 1.90 | ELXA800LGB222TA50U | | |
| 270,000 | 89 × 140 | 1.20 | 16.8 | ELXA160LGC274TFE0U | | 2,700 | 35 × 80 | 0.15 | 2.20 | ELXA800LGB272TA80U | | |
| 25 | 12,000 | 35 × 80 | 0.35 | 3.30 | | ELXA250LGB123TA80U | 3,300 | 35 × 80 | 0.15 | 2.50 | ELXA800LGB332TA80U | |
| | 15,000 | 35 × 80 | 0.35 | 3.70 | | ELXA250LGB153TA80U | 3,900 | 35 × 80 | 0.15 | 2.90 | ELXA800LGB392TA80U | |
| | 18,000 | 35 × 80 | 0.35 | 4.00 | | ELXA250LGB183TA80U | 4,700 | 35 × 100 | 0.15 | 3.10 | ELXA800LGB472TAA0U | |
| | 22,000 | 35 × 80 | 0.35 | 4.50 | | ELXA250LGB223TA80U | 5,600 | 35 × 100 | 0.15 | 3.50 | ELXA800LGB562TAA0U | |
| | 27,000 | 35 × 100 | 0.40 | 5.00 | | ELXA250LGB273TAA0U | 6,800 | 35 × 120 | 0.20 | 4.10 | ELXA800LGB682TAC0U | |
| | 33,000 | 35 × 120 | 0.40 | 5.90 | | ELXA250LGB333TAC0U | 8,200 | 50 × 80 | 0.20 | 4.80 | ELXA800LGC822TC80U | |
| | 39,000 | 50 × 80 | 0.40 | 6.50 | | ELXA250LGC393TC80U | 10,000 | 50 × 100 | 0.20 | 5.60 | ELXA800LGC103TCA0U | |
| | 47,000 | 50 × 100 | 0.40 | 7.90 | | ELXA250LGC473TCA0U | 12,000 | 50 × 100 | 0.20 | 6.10 | ELXA800LGC123TCA0U | |
| | 56,000 | 50 × 120 | 0.40 | 8.80 | | ELXA250LGC563TCC0U | 15,000 | 50 × 120 | 0.20 | 7.40 | ELXA800LGC153TCC0U | |
| | 68,000 | 50 × 120 | 0.50 | 9.10 | | ELXA250LGC683TCC0U | 18,000 | 63.5 × 120 | 0.25 | 8.00 | ELXA800LGC183TDC0U | |
| | 82,000 | 63.5 × 100 | 0.50 | 10.6 | | ELXA250LGC823TDA0U | 22,000 | 76.2 × 100 | 0.25 | 9.10 | ELXA800LGC223TEA0U | |
| | 100,000 | 63.5 × 120 | 0.60 | 11.4 | | ELXA250LGC104TDC0U | 27,000 | 76.2 × 120 | 0.30 | 9.70 | ELXA800LGC273TEC0U | |
| | 120,000 | 76.2 × 100 | 0.60 | 12.8 | ELXA250LGC124TEA0U | 33,000 | 76.2 × 140 | 0.30 | 11.5 | ELXA800LGC333TEE0U | | |
| | 150,000 | 76.2 × 120 | 0.75 | 13.7 | ELXA250LGC154TEC0U | 39,000 | 89 × 140 | 0.35 | 12.5 | ELXA800LGC393TFE0U | | |
| 180,000 | 76.2 × 140 | 0.75 | 16.1 | ELXA250LGC184TEE0U | 100 | 1,200 | 35 × 50 | 0.15 | 1.40 | ELXA101LGB122TA50U | | |
| 220,000 | 89 × 140 | 1.00 | 16.6 | ELXA250LGC224TFE0U | | 1,500 | 35 × 80 | 0.15 | 1.60 | ELXA101LGB152TA80U | | |
| 35 | 8,200 | 35 × 80 | 0.30 | 3.00 | | ELXA350LGB822TA80U | 1,800 | 35 × 80 | 0.15 | 1.80 | ELXA101LGB182TA80U | |
| | 10,000 | 35 × 80 | 0.30 | 3.30 | | ELXA350LGB103TA80U | 2,200 | 35 × 80 | 0.15 | 2.00 | ELXA101LGB222TA80U | |
| | 12,000 | 35 × 80 | 0.30 | 3.60 | | ELXA350LGB123TA80U | 2,700 | 35 × 80 | 0.15 | 2.40 | ELXA101LGB272TA80U | |
| | 15,000 | 35 × 80 | 0.30 | 4.10 | | ELXA350LGB153TA80U | 3,300 | 35 × 100 | 0.15 | 2.80 | ELXA101LGB332TAA0U | |
| | 18,000 | 35 × 100 | 0.30 | 4.80 | | ELXA350LGB183TAA0U | 3,900 | 35 × 120 | 0.15 | 3.10 | ELXA101LGB392TAC0U | |
| | 22,000 | 35 × 120 | 0.35 | 5.20 | | ELXA350LGB223TAC0U | 4,700 | 50 × 80 | 0.15 | 3.60 | ELXA101LGC472TC80U | |
| | 27,000 | 50 × 80 | 0.40 | 5.90 | | ELXA350LGC273TC80U | 5,600 | 50 × 100 | 0.15 | 4.30 | ELXA101LGC562TCA0U | |
| | 33,000 | 50 × 100 | 0.40 | 6.60 | | ELXA350LGC333TCA0U | 6,800 | 50 × 120 | 0.15 | 5.00 | ELXA101LGC682TCC0U | |
| | 39,000 | 50 × 120 | 0.40 | 7.80 | | ELXA350LGC393TCC0U | 8,200 | 50 × 120 | 0.15 | 5.50 | ELXA101LGC822TCC0U | |
| | 47,000 | 50 × 120 | 0.45 | 8.00 | | ELXA350LGC473TCC0U | 10,000 | 63.5 × 100 | 0.15 | 6.40 | ELXA101LGC103TDA0U | |
| | 56,000 | 63.5 × 100 | 0.45 | 9.20 | | ELXA350LGC563TDA0U | 12,000 | 63.5 × 120 | 0.20 | 6.60 | ELXA101LGC123TDC0U | |
| | 68,000 | 63.5 × 120 | 0.45 | 11.0 | | ELXA350LGC683TDC0U | 15,000 | 76.2 × 100 | 0.20 | 7.50 | ELXA101LGC153TEA0U | |
| | 82,000 | 76.2 × 120 | 0.50 | 12.7 | ELXA350LGC823TEC0U | 18,000 | 76.2 × 120 | 0.25 | 8.00 | ELXA101LGC183TEC0U | | |
| | 100,000 | 76.2 × 140 | 0.60 | 13.5 | ELXA350LGC104TEE0U | 22,000 | 76.2 × 140 | 0.25 | 9.40 | ELXA101LGC223TEE0U | | |
| 120,000 | 89 × 140 | 0.60 | 16.1 | ELXA350LGC124TFE0U | 27,000 | 89 × 140 | 0.30 | 10.4 | ELXA101LGC273TFE0U | | | |
| 50 | 3,900 | 35 × 50 | 0.20 | 2.00 | ELXA500LGB392TA50U | 160 | 680 | 35 × 50 | 0.15 | 1.10 | ELXA161LGB681TA50U | |
| | 4,700 | 35 × 50 | 0.25 | 2.20 | ELXA500LGB472TA50U | | 820 | 35 × 80 | 0.15 | 1.20 | ELXA161LGB821TA80U | |
| | 5,600 | 35 × 80 | 0.25 | 2.80 | ELXA500LGB562TA80U | | 1,000 | 35 × 80 | 0.15 | 1.30 | ELXA161LGB102TA80U | |
| | 6,800 | 35 × 80 | 0.25 | 3.00 | ELXA500LGB682TA80U | | 1,200 | 35 × 80 | 0.15 | 1.50 | ELXA161LGB122TA80U | |
| | 8,200 | 35 × 80 | 0.25 | 3.30 | ELXA500LGB822TA80U | | 1,500 | 35 × 80 | 0.15 | 1.70 | ELXA161LGB152TA80U | |



LARGE CAPACITANCE ALUMINUM ELECTROLYTIC CAPACITORS long life screw terminals, 105°C

LXASeries

◆STANDARD RATINGS

| WV (V _{dc}) | Cap (μF) | Case size φD×L(mm) | tan δ | Rated ripple current (Arms/105°C, 120Hz) | Part No. |
|-----------------------|------------|--------------------|-------|--|--------------------|
| 160 | 1,800 | 35 × 100 | 0.15 | 2.00 | ELXA161LGB182TAA0U |
| | 2,200 | 35 × 120 | 0.15 | 2.30 | ELXA161LGB222TAC0U |
| | 2,700 | 35 × 120 | 0.15 | 2.70 | ELXA161LGB272TAC0U |
| | 3,300 | 50 × 100 | 0.15 | 3.30 | ELXA161LGC332TCA0U |
| | 3,900 | 50 × 120 | 0.15 | 3.80 | ELXA161LGC392TCC0U |
| | 4,700 | 50 × 120 | 0.15 | 4.20 | ELXA161LGC472TCC0U |
| | 5,600 | 50 × 120 | 0.15 | 4.70 | ELXA161LGC562TCC0U |
| | 6,800 | 63.5 × 120 | 0.15 | 5.70 | ELXA161LGC682TDC0U |
| | 8,200 | 76.2 × 100 | 0.20 | 6.40 | ELXA161LGC822TEA0U |
| | 10,000 | 76.2 × 120 | 0.20 | 6.60 | ELXA161LGC103TEC0U |
| 12,000 | 76.2 × 140 | 0.20 | 7.80 | ELXA161LGC123TEE0U | |
| 15,000 | 89 × 140 | 0.20 | 9.50 | ELXA161LGC153TFE0U | |
| 200 | 470 | 35 × 50 | 0.15 | 0.90 | ELXA201LGB471TA50U |
| | 560 | 35 × 80 | 0.15 | 1.00 | ELXA201LGB561TA80U |
| | 680 | 35 × 80 | 0.15 | 1.10 | ELXA201LGB681TA80U |
| | 820 | 35 × 80 | 0.15 | 1.30 | ELXA201LGB821TA80U |
| | 1,000 | 35 × 100 | 0.15 | 1.50 | ELXA201LGB102TAA0U |
| | 1,200 | 35 × 120 | 0.15 | 1.70 | ELXA201LGB122TAC0U |
| | 1,500 | 35 × 120 | 0.15 | 1.90 | ELXA201LGB152TAC0U |
| | 1,800 | 50 × 80 | 0.15 | 2.20 | ELXA201LGC182TC80U |
| | 2,200 | 50 × 100 | 0.15 | 2.70 | ELXA201LGC222TCA0U |
| | 2,700 | 50 × 120 | 0.15 | 3.20 | ELXA201LGC272TCC0U |
| | 3,300 | 50 × 120 | 0.15 | 3.50 | ELXA201LGC332TCC0U |
| | 3,900 | 63.5 × 100 | 0.15 | 4.00 | ELXA201LGC392TDA0U |
| | 4,700 | 63.5 × 120 | 0.15 | 4.70 | ELXA201LGC472TDC0U |
| 5,600 | 76.2 × 100 | 0.15 | 5.30 | ELXA201LGC562TEA0U | |
| 6,800 | 76.2 × 120 | 0.15 | 6.30 | ELXA201LGC682TEC0U | |
| 8,200 | 76.2 × 140 | 0.20 | 6.40 | ELXA201LGC822TEE0U | |
| 10,000 | 89 × 140 | 0.20 | 7.70 | ELXA201LGC103TFE0U | |
| 250 | 330 | 35 × 50 | 0.15 | 0.70 | ELXA251LGB331TA50U |
| | 390 | 35 × 80 | 0.15 | 0.80 | ELXA251LGB391TA80U |
| | 470 | 35 × 80 | 0.15 | 0.90 | ELXA251LGB471TA80U |
| | 560 | 35 × 80 | 0.15 | 1.00 | ELXA251LGB561TA80U |
| | 680 | 35 × 100 | 0.15 | 1.20 | ELXA251LGB681TAA0U |
| | 820 | 35 × 100 | 0.15 | 1.40 | ELXA251LGB821TAA0U |
| | 1,000 | 35 × 120 | 0.15 | 1.60 | ELXA251LGB102TAC0U |
| | 1,200 | 50 × 80 | 0.15 | 1.80 | ELXA251LGC122TC80U |
| | 1,500 | 50 × 100 | 0.15 | 2.20 | ELXA251LGC152TCA0U |
| | 1,800 | 50 × 120 | 0.15 | 2.60 | ELXA251LGC182TCC0U |
| | 2,200 | 50 × 120 | 0.15 | 2.80 | ELXA251LGC222TCC0U |
| | 2,700 | 63.5 × 100 | 0.15 | 3.30 | ELXA251LGC272TDA0U |
| | 3,300 | 63.5 × 120 | 0.15 | 4.00 | ELXA251LGC332TDC0U |
| 3,900 | 76.2 × 100 | 0.15 | 4.40 | ELXA251LGC392TEA0U | |
| 4,700 | 76.2 × 120 | 0.15 | 5.20 | ELXA251LGC472TCE0U | |
| 5,600 | 76.2 × 140 | 0.15 | 6.10 | ELXA251LGC562TEE0U | |
| 6,800 | 89 × 140 | 0.15 | 7.40 | ELXA251LGC682TFE0U | |
| 350 | 820 | 50 × 60 | 0.20 | 3.30 | ELXA351LGC821MC60U |
| | 1,500 | 50 × 85 | 0.20 | 5.20 | ELXA351LGC152MC85U |
| | 2,200 | 50 × 105 | 0.20 | 7.00 | ELXA351LGC222MCA5U |
| | 2,700 | 50 × 125 | 0.20 | 8.40 | ELXA351LGC272MCC5U |
| | 2,700 | 63.5 × 85 | 0.20 | 8.10 | ELXA351LGC272MD85U |
| | 3,300 | 50 × 145 | 0.20 | 9.90 | ELXA351LGC332MCE5U |
| | 3,300 | 63.5 × 105 | 0.20 | 9.80 | ELXA351LGC332MDA5U |
| | 3,900 | 63.5 × 125 | 0.20 | 11.5 | ELXA351LGC392MDC5U |
| | 3,900 | 76.2 × 85 | 0.20 | 10.8 | ELXA351LGC392ME85U |
| | 5,600 | 63.5 × 145 | 0.20 | 14.7 | ELXA351LGC562MDE5U |
| | 6,800 | 76.2 × 125 | 0.20 | 16.8 | ELXA351LGC682MEC5U |
| | 8,200 | 76.2 × 145 | 0.20 | 19.6 | ELXA351LGC822MEE5U |
| | 8,200 | 89 × 125 | 0.20 | 18.9 | ELXA351LGC822MFC5U |
| 10,000 | 76.2 × 190 | 0.20 | 23.0 | ELXA351LGC103MEK0U | |
| 10,000 | 89 × 145 | 0.20 | 22.2 | ELXA351LGC103MFE5U | |
| 15,000 | 89 × 190 | 0.20 | 30.6 | ELXA351LGC153MFK0U | |
| 22,000 | 89 × 270 | 0.20 | 43.5 | ELXA351LGC223MFT0U | |

| WV (V _{dc}) | Cap (μF) | Case size φD×L(mm) | tan δ | Rated ripple current (Arms/105°C, 120Hz) | Part No. | |
|-----------------------|----------|--------------------|----------|--|--------------------|--------------------|
| 400 | 680 | 50 × 60 | 0.20 | 3.00 | ELXA401LGC681MC60U | |
| | 1,200 | 50 × 85 | 0.20 | 4.70 | ELXA401LGC122MC85U | |
| | 1,800 | 50 × 105 | 0.20 | 6.30 | ELXA401LGC182MCA5U | |
| | 2,200 | 50 × 125 | 0.20 | 7.50 | ELXA401LGC222MCC5U | |
| | 2,200 | 63.5 × 85 | 0.20 | 7.30 | ELXA401LGC222MD85U | |
| | 2,700 | 50 × 145 | 0.20 | 8.90 | ELXA401LGC272MCE5U | |
| | 2,700 | 63.5 × 105 | 0.20 | 8.80 | ELXA401LGC272MDA5U | |
| | 3,300 | 63.5 × 125 | 0.20 | 10.5 | ELXA401LGC332MDC5U | |
| | 3,300 | 76.2 × 85 | 0.20 | 9.90 | ELXA401LGC332ME85U | |
| | 4,700 | 63.5 × 145 | 0.20 | 13.4 | ELXA401LGC472MDE5U | |
| | 4,700 | 76.2 × 125 | 0.20 | 13.9 | ELXA401LGC472MCE5U | |
| | 6,800 | 76.2 × 145 | 0.20 | 17.9 | ELXA401LGC682MEE5U | |
| | 6,800 | 89 × 125 | 0.20 | 17.2 | ELXA401LGC682MFC5U | |
| | 8,200 | 76.2 × 190 | 0.20 | 20.8 | ELXA401LGC822MEK0U | |
| | 8,200 | 89 × 145 | 0.20 | 20.1 | ELXA401LGC822MFE5U | |
| | 12,000 | 89 × 190 | 0.20 | 27.4 | ELXA401LGC123MFK0U | |
| 18,000 | 89 × 270 | 0.20 | 39.4 | ELXA401LGC183MFT0U | | |
| 450 | 560 | 50 × 60 | 0.20 | 2.60 | ELXA451LGC561MC60U | |
| | 1,000 | 50 × 85 | 0.20 | 4.00 | ELXA451LGC102MC85U | |
| | 1,200 | 50 × 105 | 0.20 | 4.80 | ELXA451LGC122MCA5U | |
| | 1,800 | 50 × 125 | 0.20 | 6.40 | ELXA451LGC182MCC5U | |
| | 1,800 | 63.5 × 85 | 0.20 | 6.20 | ELXA451LGC182MD85U | |
| | 2,200 | 50 × 145 | 0.20 | 7.60 | ELXA451LGC222MCE5U | |
| | 2,200 | 63.5 × 105 | 0.20 | 7.50 | ELXA451LGC222MDA5U | |
| | 2,700 | 63.5 × 125 | 0.20 | 8.90 | ELXA451LGC272MDC5U | |
| | 2,700 | 76.2 × 85 | 0.20 | 8.40 | ELXA451LGC272ME85U | |
| | 3,300 | 63.5 × 145 | 0.20 | 10.6 | ELXA451LGC332MDE5U | |
| | 3,300 | 76.2 × 105 | 0.20 | 10.2 | ELXA451LGC332MEA5U | |
| | 3,900 | 76.2 × 125 | 0.20 | 11.9 | ELXA451LGC392MEC5U | |
| | 4,700 | 76.2 × 145 | 0.20 | 14.0 | ELXA451LGC472MEE5U | |
| | 5,600 | 89 × 125 | 0.20 | 14.2 | ELXA451LGC562MFC5U | |
| | 6,800 | 76.2 × 190 | 0.20 | 17.3 | ELXA451LGC682MEK0U | |
| | 6,800 | 89 × 145 | 0.20 | 16.7 | ELXA451LGC682MFE5U | |
| 10,000 | 89 × 190 | 0.20 | 22.8 | ELXA451LGC103MFK0U | | |
| 15,000 | 89 × 270 | 0.20 | 32.8 | ELXA451LGC153MFT0U | | |
| 500 | 470 | 50 × 60 | 0.20 | 2.40 | ELXA501LGC471MC60U | |
| | 820 | 50 × 85 | 0.20 | 3.60 | ELXA501LGC821MC85U | |
| | 1,000 | 50 × 105 | 0.20 | 4.40 | ELXA501LGC102MCA5U | |
| | 1,200 | 50 × 125 | 0.20 | 5.20 | ELXA501LGC122MCC5U | |
| | 1,200 | 63.5 × 85 | 0.20 | 5.00 | ELXA501LGC122MD85U | |
| | 1,500 | 50 × 145 | 0.20 | 6.30 | ELXA501LGC152MCE5U | |
| | 1,800 | 63.5 × 105 | 0.20 | 6.80 | ELXA501LGC182MDA5U | |
| | 2,700 | 63.5 × 145 | 0.20 | 9.60 | ELXA501LGC272MDE5U | |
| | 2,700 | 76.2 × 105 | 0.20 | 9.20 | ELXA501LGC272MEA5U | |
| | 3,900 | 76.2 × 145 | 0.20 | 12.7 | ELXA501LGC392MEE5U | |
| | 3,900 | 89 × 125 | 0.20 | 11.9 | ELXA501LGC392MFC5U | |
| | 6,800 | 89 × 190 | 0.20 | 18.8 | ELXA501LGC682MFK0U | |
| | 10,000 | 89 × 270 | 0.20 | 26.8 | ELXA501LGC103MFT0U | |
| | 525 | 390 | 50 × 60 | 0.20 | 2.20 | ELXA5C1LGC391MC60U |
| | | 680 | 50 × 85 | 0.20 | 3.30 | ELXA5C1LGC681MC85U |
| | | 1,000 | 50 × 125 | 0.20 | 4.80 | ELXA5C1LGC102MCC5U |
| 1,500 | | 63.5 × 105 | 0.20 | 6.20 | ELXA5C1LGC122MDA5U | |
| 1,800 | | 63.5 × 125 | 0.20 | 7.30 | ELXA5C1LGC182MDC5U | |
| 2,200 | | 63.5 × 145 | 0.20 | 8.60 | ELXA5C1LGC222MDE5U | |
| 2,200 | | 76.2 × 105 | 0.20 | 8.30 | ELXA5C1LGC222MEA5U | |
| 2,700 | | 76.2 × 125 | 0.20 | 9.90 | ELXA5C1LGC272MCE5U | |
| 3,300 | | 76.2 × 145 | 0.20 | 11.7 | ELXA5C1LGC332MEE5U | |
| 4,700 | | 76.2 × 190 | 0.20 | 14.4 | ELXA5C1LGC472MEK0U | |
| 4,700 | | 89 × 145 | 0.20 | 13.9 | ELXA5C1LGC472MFE5U | |
| 5,600 | | 89 × 190 | 0.20 | 17.1 | ELXA5C1LGC562MFK0U | |



LARGE CAPACITANCE ALUMINUM ELECTROLYTIC CAPACITORS long life screw terminals , 105°C

LXA Series

◆ RATED RIPPLE CURRENT MULTIPLIERS

● Frequency Multipliers

| Frequency (Hz) | 50 | 120 | 300 | 1k | 3k | 10k | 50k |
|---------------------------|------|------|------|------|------|------|------|
| 10 to 50V _{dc} | 0.95 | 1.00 | 1.03 | 1.05 | — | 1.09 | 1.12 |
| 63 to 80V _{dc} | 0.90 | 1.00 | 1.06 | 1.10 | — | 1.18 | 1.22 |
| 100 to 250V _{dc} | 0.80 | 1.00 | 1.12 | 1.22 | — | 1.30 | 1.33 |
| 350 to 525V _{dc} | 0.80 | 1.00 | 1.20 | 1.50 | 1.60 | — | — |

Note : The endurance of capacitors is reduced with internal heating produced by ripple current at the rate of halving the lifetime with every 5 to 10°C rise. When long life performance is requested in actual use, the rms ripple current has to be reduced. Also, for the LXA series capacitors (350 to 525V_{dc} products), using them at operating voltage can extend their lifetime. For details, please contact a representative of Nippon Chemi-con.

X-ON Electronics

Largest Supplier of Electrical and Electronic Components

Click to view similar products for Aluminium Electrolytic Capacitors - Screw Terminal category:

Click to view products by United Chemicon manufacturer:

Other Similar products are found below :

[M39018/04-2181M](#) [M39018/06-0125M](#) [M39018/06-0158M](#) [A331FH221M500A](#) [A331FD682M063A](#) [A331LH223M063A](#)
[A331PM682M200A](#) [FAS220250AA](#) [M39018/04-2146M](#) [36DA222F450CC2A](#) [32D502F075CD2B](#) [36D552G040AC2A](#) [36DA223F025BA2A](#)
[36DA563F050BF2A](#) [36DA152F400BC2AEA](#) [M39018/04-2145M](#) [36DA683F025BL2A](#) [M39018/06-0139M](#) [A331PM472M250A](#)
[E74D400HPN173TCE3M](#) [500X822U450DG1B](#) [HV101761T250BA2A](#) [A331LH683M025A](#) [A331LM333M063A](#) [A331TW682M500A](#)
[ALS36H222L5L350](#) [550322T450DF2BP](#) [500332U050BB2B](#) [3186EC422U100APA1](#) [E36D351CPN402TEE3U](#) [HES352T325X5L](#)
[E36D800HPN104MEE3U](#) [E36D401HPN542TEH0U](#) [E36D451LPN412TEB7U](#) [E32D3B1HPN222MD79U](#) [E36D800HLN104MEE3U](#) [MC-](#)
[TD5.08H02C-0001](#) [DB2EKCM-5.08-2P-GN](#) [DB129R-5.0-2P-GN-S](#) [DB129R-5.0-3P-GN-S](#) [DB129R-5.08-2P-GN-S](#) [DB129R-5.08-3P-GN-S](#)
[CGH292T250V3L](#) [MAL210158103E3](#) [MAL210253472E3](#) [B41458B7479M000](#) [B43703A5828M000](#) [B43742A4189M000](#)
[B43742A5278M000](#) [B43742A6188M000](#)