

# Utica® Torque Limiting Screwdrivers

## Standard Models



- Standard product calibrated right hand only. Left hand calibration on request.
- Choice of adjustable models with precision micrometer scale or factory preset models.
- U.S. Standard or metric scales
- Precision micrometer scale (adjustable models) calibrated in inch-ounces or inch-pounds. Metric models: cm-kg.
- Easy-release bit holders securely retain bits during operation while permitting easy removal.
- Anti-backlash design for repeatability.
- Meets or exceeds ASME B107.14M and ISO 6789 specifications.
- Adjustable model accuracy is ±6% of setting, starting at 20% of full scale to full scale. Right hand only.

### Adjustable Models

Model No.	Range	Collar Color	Increments	Hex Drive	Weight lbs.	kg.
TS-100	20–100 in.-oz.	Black	2 in.-oz.	1/4 Female	.50	.23
TS-30	6–30 in.-lb.	Red	1 in.-lb.	1/4 Female	.50	.23
TS-35	6–36 in.-lb.	Blue	1 in.-lb.	1/4 Female	.50	.23

### Metric

TS-3M*	.7–3.5 Nm	Gold	.1 Nm	1/4 Female	.50	.23
--------	-----------	------	-------	------------	-----	-----

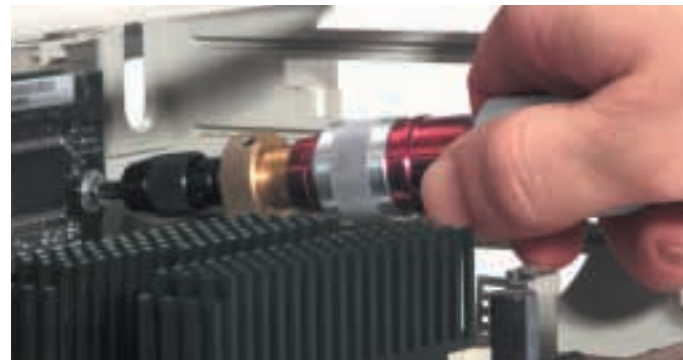
If calibration certification is required, request at time of purchase (extra charge).

### Preset Models (Preset models are designed for highly repetitive assembly line operations.)

Model No.	Range				Hex Drive
	in.-oz.	in.-lb.	Nm	cm-kg	
TS-SN-1	20–150	1.5–10	.15–1.1	1.5–12	1/4 Female
TS-SN-2	128–640	8–40	1–4.5	9–45	1/4 Female

If calibration certification is required, request at time of purchase (extra charge).

**NOTE:** When ordering preset tools, specify desired torque setting.



TS-30

TS-SN-1

# Utica® Torque Limiting Screwdrivers

## Standard Model Accessories & Kits

### Hex Bits

Part No.	Hex Size	Cap Screw Size	Set Screw Size	Flathead Screw Size
185-00X	050	0	3,4	1,2
185-00X	1/16	1	5,6	3,4
185-0X	5/64	2,3	8	5,6
185-1X	3/32	4,5	10	8
185-9X	7/64	6	-	-
185-2X	1/8	-	1/4	10
185-10X	9/64	8	-	-
185-3X	5/32	10	5/16	1/4
185-4X	3/16	1/4	3/8	-

### Phillips Bits

Part No.	Point Size	Screw Size
446-0X	0	0,1
446-1X	1	2,3,4
446-2X	2	5,6,7,8,10
440-3X	3	12,14

### Screwdriver Bits

Part No.	Blade Width	Blade Thickness	Screw Size
445-00X	.134	.028	2,3
445-0X	.155	.030	3,4
445-10X	.185	.034	4,5
445-20X	.214	.036	5,6
445-30X	.250	.040	6,8

### Kit No. KT-100

Range 20-100 in.-oz. 20 piece

Qty.	Description
1	Adj. torque screwdriver 1/4" fm. hex
1	Torque screwdriver bld. .000
1	Torque screwdriver bld. .100
1	Hex socket 3/32"
1	Hex socket 7/64"
1	Hex key .028
1	Hex key .035
1	Screwdriver hex bit .050
1	Screwdriver hex bit 1/16"
1	Screwdriver hex bit 5/64"
1	Screwdriver bld. torque screw SZ. 2, 3
1	Screwdriver bld. torque screw SZ. 4, 5
1	Screwdriver bld. torque screw SZ. 5, 6
1	Screwdriver bld. torque screw SZ. 6, 8
1	Phillips bld. torque screw SZ. 0, 1
1	Phillips bld. torque screw SZ. 2, 3, 4
1	Adapter 1/4" drive
1	Bit holder mini. torque
1	1/4" Dr. reg. socket 1/8"
1	1/4" Dr. reg. socket 3/16"
1	1/4" Dr. reg. socket 1/4"
1	1/4" Dr. reg. socket 5/16"
1	Plas/case
1	Insert

### Kit No. KT-30

Range 6 to 30 in.-lb. 24 piece

Qty.	Description
1	Adj. torque screwdriver 1/4" fm. hex
1	Torque screwdriver bld. .100
1	Hex socket 7/64"
1	Hex key .035
1	Screwdriver hex bit .050
1	Screwdriver hex bit 1/16"
1	Screwdriver hex bit 5/64"
1	Screwdriver hex bit 3/32"
1	Screwdriver hex bit 1/8"
1	Screwdriver hex bit 5/32"
1	Screwdriver bld. torque screw SZ. 2, 3
1	Screwdriver bld. torque screw SZ. 4, 5
1	Screwdriver bld. torque screw SZ. 5, 6
1	Screwdriver bld. torque screw SZ. 6, 8
1	Phillips bld. torque screw SZ. 0, 1
1	Phillips bld. torque screw SZ. 2, 3, 4
1	Adapter 1/4" drive
1	Bit holder mini. torque
1	1/4" Dr. reg. socket 1/8"
1	1/4" Dr. reg. socket 3/16"
1	1/4" Dr. reg. socket 1/4"
1	1/4" Dr. reg. socket 5/16"
1	Plas/case
1	Insert

### Kit No. KT-130

Range 20 in.-oz. to 30 in.-lb. 43 piece

Qty.	Description
1	Adj. torque screwdriver 1/4" fm. hex
1	Adj. torque screwdriver 1/4" fm. hex
1	Torque screwdriver bld. .080
2	Torque screwdriver bld. .100
1	Hex socket 3/32"
2	Hex socket 7/64"
1	Hex key .028
2	Hex key .035
2	Screwdriver hex bit .050
2	Screwdriver hex bit 1/16"
2	Screwdriver hex bit 5/64"
1	Screwdriver hex bit 3/32"
1	Screwdriver hex bit 1/8"
1	Screwdriver hex bit 5/32"
2	Screwdriver bld. torque screw SZ. 2, 3
2	Screwdriver bld. torque screw SZ. 4, 5
1	Screwdriver bld. torque screw SZ. 5, 6
1	Screwdriver bld. torque screw SZ. 6, 8
2	Screwdriver bld. torque screw SZ. 2, 3
2	Screwdriver bld. torque screw SZ. 4, 5
1	Screwdriver bld. torque screw SZ. 5, 6
1	Screwdriver bld. torque screw SZ. 6, 8
2	Phillips bld. torque screw SZ. 0, 1
2	Phillips bld. torque screw SZ. 2, 3, 4
1	Phillips bld. torque screw SZ. 4, 6, 7, 8, 10
2	Adapter 1/4" drive
2	Bit holder mini. torque
1	1/4" Dr. reg. socket 1/8"
1	1/4" Dr. reg. socket 5/32"
2	1/4" Dr. reg. socket 3/16"
1	1/4" Dr. reg. socket 1/4"
1	1/4" Dr. reg. socket 5/16"
1	Plas/case
1	Insert



**CAUTION:** 1. Under normal use, periodic recalibration may be necessary to ensure accurate readings and applied torque.  
2. FOR EXTENDED SPRING LIFE, RETURN TO LOWEST SETTING AFTER EACH USE.

# Utica® Torque Limiting Screwdrivers

## Standard Models



- Standard product calibrated right hand only. Left hand calibration on request.
- Choice of adjustable models with precision micrometer scale or factory preset models.
- U.S. Standard or metric scales
- Precision micrometer scale (adjustable models) calibrated in inch-ounces or inch-pounds. Metric models: cm-kg.
- Easy-release bit holders securely retain bits during operation while permitting easy removal.
- Anti-backlash design for repeatability.
- Meets or exceeds ASME B107.14M and ISO 6789 specifications.
- Adjustable model accuracy is ±6% of setting, starting at 20% of full scale to full scale. Right hand only.

### Adjustable Models

Model No.	Range	Collar Color	Increments	Hex Drive	Weight lbs.	kg.
TS-100	20–100 in.-oz.	Black	2 in.-oz.	1/4 Female	.50	.23
TS-30	6–30 in.-lb.	Red	1 in.-lb.	1/4 Female	.50	.23
TS-35	6–36 in.-lb.	Blue	1 in.-lb.	1/4 Female	.50	.23

### Metric

TS-3M*	.7–3.5 Nm	Gold	.1 Nm	1/4 Female	.50	.23
--------	-----------	------	-------	------------	-----	-----

If calibration certification is required, request at time of purchase (extra charge).

### Preset Models (Preset models are designed for highly repetitive assembly line operations.)

Model No.	Range				Hex Drive
	in.-oz.	in.-lb.	Nm	cm-kg	
TS-SN-1	20–150	1.5–10	.15–1.1	1.5–12	1/4 Female
TS-SN-2	128–640	8–40	1–4.5	9–45	1/4 Female

If calibration certification is required, request at time of purchase (extra charge).

**NOTE:** When ordering preset tools, specify desired torque setting.



TS-30

TS-SN-1

# Utica® Torque Limiting Screwdrivers

## Standard Model Accessories & Kits

### Hex Bits

Part No.	Hex Size	Cap Screw Size	Set Screw Size	Flathead Screw Size
185-00X	050	0	3,4	1,2
185-00X	1/16	1	5,6	3,4
185-0X	5/64	2,3	8	5,6
185-1X	3/32	4,5	10	8
185-9X	7/64	6	-	-
185-2X	1/8	-	1/4	10
185-10X	9/64	8	-	-
185-3X	5/32	10	5/16	1/4
185-4X	3/16	1/4	3/8	-

### Phillips Bits

Part No.	Point Size	Screw Size
446-0X	0	0,1
446-1X	1	2,3,4
446-2X	2	5,6,7,8,10
440-3X	3	12,14

### Screwdriver Bits

Part No.	Blade Width	Blade Thickness	Screw Size
445-00X	.134	.028	2,3
445-0X	.155	.030	3,4
445-10X	.185	.034	4,5
445-20X	.214	.036	5,6
445-30X	.250	.040	6,8

### Kit No. KT-100

Range 20-100 in.-oz. 20 piece

Qty.	Description
1	Adj. torque screwdriver 1/4" fm. hex
1	Torque screwdriver bld. .000
1	Torque screwdriver bld. .100
1	Hex socket 3/32"
1	Hex socket 7/64"
1	Hex key .028
1	Hex key .035
1	Screwdriver hex bit .050
1	Screwdriver hex bit 1/16"
1	Screwdriver hex bit 5/64"
1	Screwdriver bld. torque screw SZ. 2, 3
1	Screwdriver bld. torque screw SZ. 4, 5
1	Screwdriver bld. torque screw SZ. 5, 6
1	Screwdriver bld. torque screw SZ. 6, 8
1	Phillips bld. torque screw SZ. 0, 1
1	Phillips bld. torque screw SZ. 2, 3, 4
1	Adapter 1/4" drive
1	Bit holder mini. torque
1	1/4" Dr. reg. socket 1/8"
1	1/4" Dr. reg. socket 3/16"
1	1/4" Dr. reg. socket 1/4"
1	1/4" Dr. reg. socket 5/16"
1	Plas/case
1	Insert

### Kit No. KT-30

Range 6 to 30 in.-lb. 24 piece

Qty.	Description
1	Adj. torque screwdriver 1/4" fm. hex
1	Torque screwdriver bld. .100
1	Hex socket 7/64"
1	Hex key .035
1	Screwdriver hex bit .050
1	Screwdriver hex bit 1/16"
1	Screwdriver hex bit 5/64"
1	Screwdriver hex bit 3/32"
1	Screwdriver hex bit 1/8"
1	Screwdriver hex bit 5/32"
1	Screwdriver bld. torque screw SZ. 2, 3
1	Screwdriver bld. torque screw SZ. 4, 5
1	Screwdriver bld. torque screw SZ. 5, 6
1	Screwdriver bld. torque screw SZ. 6, 8
1	Phillips bld. torque screw SZ. 0, 1
1	Phillips bld. torque screw SZ. 2, 3, 4
1	Adapter 1/4" drive
1	Bit holder mini. torque
1	1/4" Dr. reg. socket 1/8"
1	1/4" Dr. reg. socket 3/16"
1	1/4" Dr. reg. socket 1/4"
1	1/4" Dr. reg. socket 5/16"
1	Plas/case
1	Insert

### Kit No. KT-130

Range 20 in.-oz. to 30 in.-lb. 43 piece

Qty.	Description
1	Adj. torque screwdriver 1/4" fm. hex
1	Adj. torque screwdriver 1/4" fm. hex
1	Torque screwdriver bld. .080
2	Torque screwdriver bld. .100
1	Hex socket 3/32"
2	Hex socket 7/64"
1	Hex key .028
2	Hex key .035
2	Screwdriver hex bit .050
2	Screwdriver hex bit 1/16"
2	Screwdriver hex bit 5/64"
1	Screwdriver hex bit 3/32"
1	Screwdriver hex bit 1/8"
1	Screwdriver hex bit 5/32"
2	Screwdriver bld. torque screw SZ. 2, 3
2	Screwdriver bld. torque screw SZ. 4, 5
1	Screwdriver bld. torque screw SZ. 5, 6
1	Screwdriver bld. torque screw SZ. 6, 8
2	Screwdriver bld. torque screw SZ. 2, 3
2	Screwdriver bld. torque screw SZ. 4, 5
1	Screwdriver bld. torque screw SZ. 5, 6
1	Screwdriver bld. torque screw SZ. 6, 8
2	Phillips bld. torque screw SZ. 0, 1
2	Phillips bld. torque screw SZ. 2, 3, 4
1	Phillips bld. torque screw SZ. 4, 6, 7, 8, 10
2	Adapter 1/4" drive
2	Bit holder mini. torque
1	1/4" Dr. reg. socket 1/8"
1	1/4" Dr. reg. socket 5/32"
2	1/4" Dr. reg. socket 3/16"
1	1/4" Dr. reg. socket 1/4"
1	1/4" Dr. reg. socket 5/16"
1	Plas/case
1	Insert

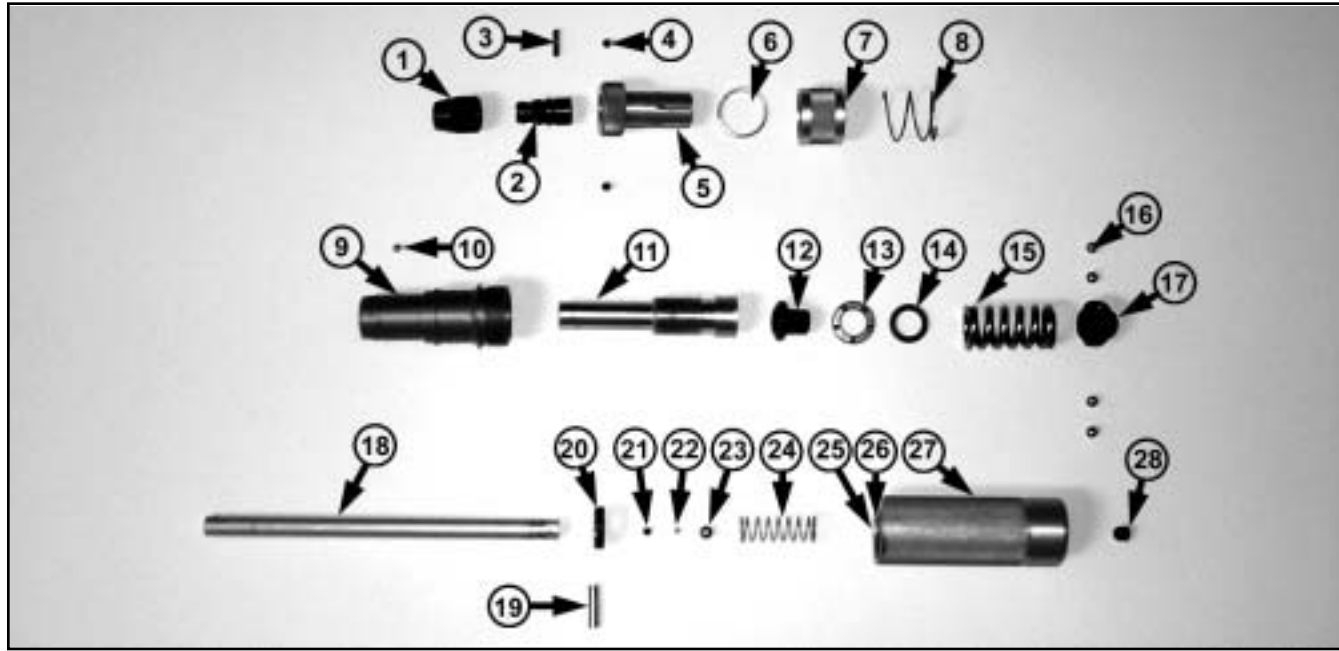


**CAUTION:** 1. Under normal use, periodic recalibration may be necessary to ensure accurate readings and applied torque.  
2. FOR EXTENDED SPRING LIFE, RETURN TO LOWEST SETTING AFTER EACH USE.





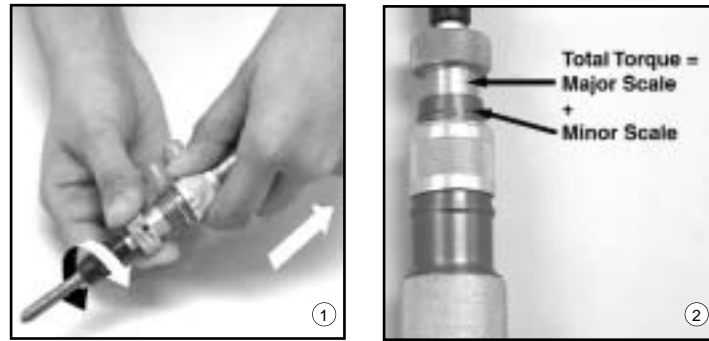
**! IMPORTANT: Unauthorized repair of this product may void warranty (all parts may not be servicable). !**



**Service Repair Parts for TS-30, TS-30CM, TS-35, and TS-100 Adjustable Torque Screwdrivers**

Index	Description	TS-30	TS-30CM	TS-35	TS-100	
1	Outer Bit Holder	8502871095	8502871095	8502871095	8502871095	1
2	Inner Bit Holder	8502871094	8502871094	8502871094	8502871094	1
3	Spirol Pin	4502870142	4502870142	4502870142	4502870142	1
4	#6-32 Set Screw	4502870135	4502870135	4502870135	4502870135	2
5	Sleeve	8502870118	8502870187	8502870112	8502870119	1
6	Snap Ring	4502870137	4502870137	4502870137	4502870137	1
7	Lock Collar	8502870105	8502870105	8502870105	8502870105	1
8	Lock Collar Spring	4502870138	4502870138	4502870138	4502870138	1
9	Front Barrel	8502870116	8502870188	8502870115	8502870117	1
10	Steel Ball	4502840356	4502840356	4502840356	4502840356	1
11	Adjusting Plug	8602870184	8602870184	8602870184	8602870184	1
12	Spacer	8502870109	8502870109	8502870109	8502870109	1
13	Thrust Bearing	4502870113	4502870113	4502870113	4502870113	1
14	Thrust Washer	8502870108	8502870108	8502870108	8502870108	1
15	Torque Spring	4502870145	4502870145	4502870145	4502870140	1
16	Steel Ball	4502870143	4502870143	4502870143	4502870143	4
17	Cam	8502870101	8502870101	8502870101	8502870101	1
18	Adjusting Shaft	8502870129	8502870129	8502870129	8502870129	1
19	Roller Pin	4502870103	4502870103	4502870103	4502870103	1
20	Shaft Retainer	8502870127	8502870127	8502870127	8502870127	1
21	#6-32 X 1/8" Set Screw	4502840376	4502840376	4502840376	4502840376	1
22	3/32" Steel Ball	4502840377	4502840377	4502840377	4502840377	1
23	Steel Ball	4502870144	4502870144	4502870144	4502870144	1
24	Compression Spring	4502870141	4502870141	4502870141	4502870141	1
25	Cam Insert	8502870106	8502870106	8502870106	8502870106	1
26	Spacer	8502870102	8502870102	8502870102	8502870102	1
27	Handle	8502870107	8502870107	8502870107	8502870107	1
28	Set Screw	4502840359	4502840359	4502840359	4502840359	1

## Inserting and Removing Bits

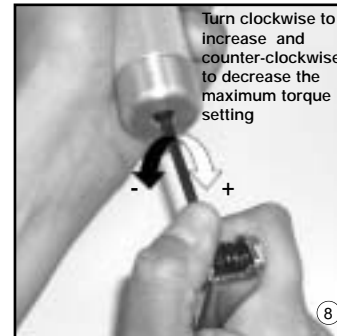
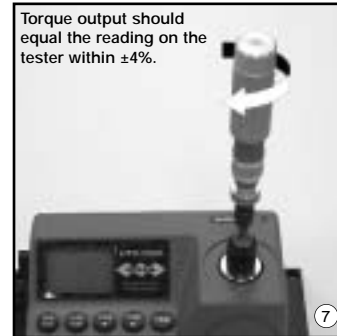
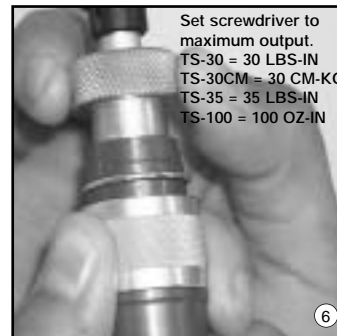
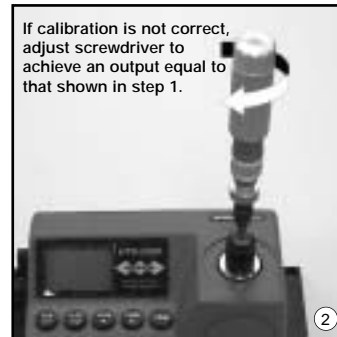
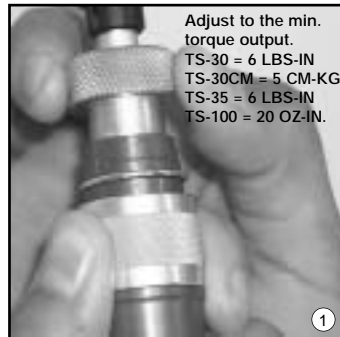


Total Torque =  
Major Scale  
+  
Minor Scale

## Recalibration of the Utica



Proper Calibration equipment is required to ensure accuracy!



For torque certification return to your nearest sales and service center

## **X-ON Electronics**

Largest Supplier of Electrical and Electronic Components

*Click to view similar products for [Utica manufacturer](#):*

Other Similar products are found below :

[TS-100](#) [TS-30](#) [185-1X](#) [446-2X](#)