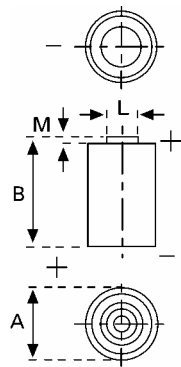


Prel. Data Sheet



Type Designation ER C
Type Number 7114
Designation IEC 26500
System Primary Li-Thionyl Chloride / Li-SOCl₂

UL Recognition:..... MH 13654
Nominal Voltage 3.6 V
Typical Capacity C 8500 mAh
 Load 4 mA, at 20°C, down to 2.0 V

Max continuous discharge current 80 mA
 to get 50% of nom. cap +20°C, down to 2.0V
Max pulse discharge current 180 mA

Weight (approx.) 50g
Volume 26,5 ccm
Coding..... Date of Manufacturing
 Month / Year

Temperature Ranges min max.
 Operating -55°C 85°C

Dimensions min max.
 Diameter (A) 25,3 25,9
 Height (B) 49,8 50,5
 Shoulder Diameter[L]..... 4,1 4,5
 Shoulder Height [M]..... 2,2 2,8

Segment Electronic

Main Applications Utility Metering
Li metal content..... Approx. 2.18g

warning: Fire, explosion and severe burn hazard. Do not recharge, crush, disassemble, heat above 100°C (212°F), incinerate, short circuit or expose contents to water. Keep battery out of reach of children and in original package until ready for use. Dispose of used batteries properly.

Internal resistance may rise versus time, especially in case of exposure to elevated temperature.

All Data contained herein is for single cells

For battery applications, performance data may vary from single cell data, depending on specific battery configuration

X-ON Electronics

Largest Supplier of Electrical and Electronic Components

Click to view similar products for [varta manufacturer](#):

Other Similar products are found below :

[56456 702 099](#) [18750](#) [4610 726 406](#) [4122 210 511](#) [LCD-CHARGER + 4XAA 2400MAH](#) [449915B](#) [4607 726 406](#) [55171403014](#)
[55625603059](#) [55615602940](#) [4112101411](#) [4 022 211 111](#) [4 106 101 436](#) [4 020 211 111](#) [MINI CHARGER + 2XAA 2100MAH](#) [MINI-CHARGER](#) [17730](#) [LCD-SMART-CHARGER](#) [414086X](#) [POCKET-CHARGER + 4XAA 2100MAH](#) [458980A](#) [LCD MULTI CHARGER](#)
[CG511-150-PB](#) [EE UNIVERSAL CHARGER](#) [CG401D-050-PB](#) [CG511-050-PB](#) [CU303-018-PB](#) [CG381D-G-100-PB](#) [413675G](#) [CU202-030-PB](#) [55615603059](#) [CG381D-G-150-PB](#) [CG481G-050-PB](#) [CU303-030-PB](#) [CG511D-030-PB](#) [CA317-PB](#) [CG511D-100-PB](#) [CU201G-B-030-PB](#)
[095668F](#) [4600 726 406](#) [CG511-030-PB](#) [CA418-PB](#) [CG481G-030-PB](#) [CG511D-150-PB](#) [CG381D-G-050-PB](#) [CU302-030-PB](#) [CG341-030-PB](#)
[CU201G-B-050-PB](#) [CA089-PB](#) [CU202G-B-030-PB](#)