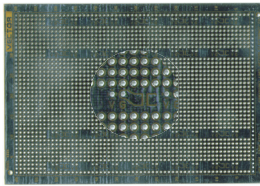
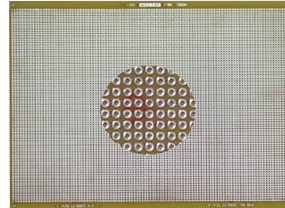




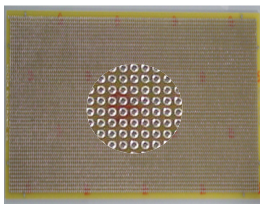
Round Pads-Per-Hole with 0.042" Holes, .100" Grid



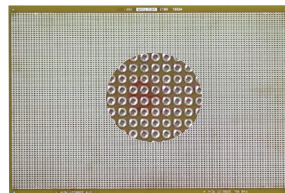
8008 4.5"Hx6.5"L x .062" TH
0.100" grid, UNIQUE circuit pattern features full voltage and ground planes on both sides with isolated plated-thru holes. 0.080" solder pads and Surface Mount cap positions for discreet decoupling capacitors. Solder coated pattern.
Material: FR4
WW Terminals: T44, T46, T49, T68
Solder Terminals: T42-1
WW Socket Pin: R32



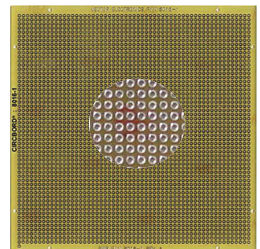
8012 9.2"Hx11.0"L x .062" TH
0.100" grid Pad-Per-Hole Pattern. .042" holes plated thru with .080" isolated solder pad around each hole on both sides.
16-Pin DIP= 72.
Material: FR4.
WW Terminals: T44, T46, T49, T68.
Solder Terminals: T42-1, K24C
WW Socket Pin: R32



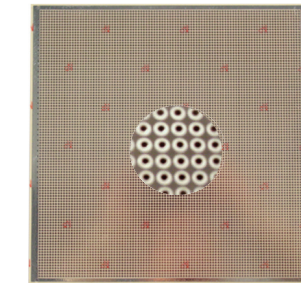
8006 5.0"Hx13.25"L x .062" TH
0.100" grid Pad-Per-Hole Pattern copper plated-thru holes both sides .042" holes with .080" isolated solder pad around each hole on both sides
16-Pin DIP= 154
Material: FR4 Epoxy Glass
WW Terminals: T44, T46, T49, T68
Solder Terminals: T42-1
WW Socket Pin: R32



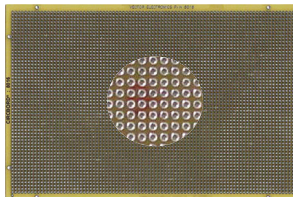
8013 10.5"Hx18.0"L x .062" TH
0.100" grid Pad-Per-Hole Pattern on both sides. Isolated 0.080" pads with 0.042" holes plated-thru copper. Unrestricted component placement.
Solder coated pattern
16-Pin DIP= 175
Material: FR4.
WW Terminals: T44, T46, T49, T68.
Solder Terminals: T42-1
WW Socket Pin: R32



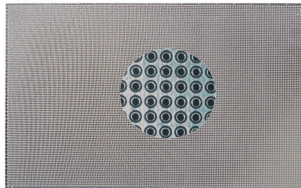
8016-1 6.0"H x 6.0"L x .062" TH
0.100" grid Pad-Per-Hole Pattern on one side only, 0.042" holes
Small economical size.
Solder coated pattern
Material: FR4
WW Terminals: T44, T46, T49, T68
Solder Terminals: T42-1
WW Socket Pin: R32



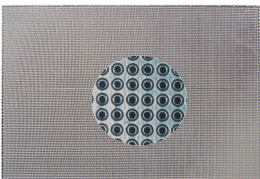
106P106-1 10.6"Hx10.6"L .062"TH
0.100" grid Pad-Per-Hole & peripheral Ground Plane on both sides .042" holes not plated thru with .080" isolated solder pad around each hole
16-Pin DIP= 275
Material: CEM-1
WW Terminals: T44, T46, T49, T68
Solder Terminals: T42-1
WW Socket Pin: R32



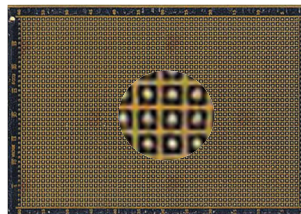
8016 6.0"H x 9.0"L x .062" TH
0.100" grid Pad-Per-Hole Pattern on both sides, 0.042" holes plated-thru copper. Unrestricted component placement.
Solder coated pattern
16-Pin DIP capacity = 165
Material: FR4
WW Terminals: T44, T46, T49, T68
Solder Terminals: T42-1
WW Socket Pin: R32



106P180-4 10.5"Hx18.0"Lx.062"TH
0.100" grid Pad-Per-Hole Pattern on both sides. Etched ground plane surrounds 0.080" pads on both sides. 0.042" holes plated-thru copper. Unrestricted component placement.
Solder coated pattern.
16-Pin DIP = 175
Material: FR-4
WW Terminals: T44, T46, T49, T68
Solder Terminals: T42-1
WW Socket Pin: R32



106P70-4 7.0"H x 10.6"L x .062"TH
0.100" grid Pad-Per-Hole Pattern on both sides. Etched ground plane surrounds 0.080" pads on both sides. 0.042" holes plated-thru copper. Solder coated pattern.
16-Pin DIP= 175
Material: FR4
WW Terminals: T44, T46, T49, T68
Solder Terminals: T42-1
WW Socket Pin: R32



8003 4.50"Hx6.50"L x .062" TH
0.100" grid Pad-Per-Hole Pattern & peripheral Ground Plane on one side only
Single-sided with no etch & plating on reverse side .042" holes not plated thru .085" square isolated solder pad
16-Pin DIP= 60
Material: CEM-1
WW Terminals: T44, T46, T49, T68
Solder Terminals: T42-1
WW Socket Pin: R32

Circbord



X-ON Electronics

Largest Supplier of Electrical and Electronic Components

Click to view similar products for [PCBs & Breadboards category](#):

Click to view products by [Vector manufacturer](#):

Other Similar products are found below :

[8004](#) [8007](#) [8016](#) [8017](#) [8028](#) [8029](#) [1268-12](#) [1268-10](#) [1320833-1](#) [923252-R](#) [3410](#) [3396](#) [15107](#) [8006](#) [8015](#) [8018](#) [8019](#) [8020](#) [1268-19](#) [1268-20](#) [8026](#) [1239-19](#) [SBBTH1520-1](#) [SBBTH1506-1](#) [SBBTH4080-1](#) [SBBTH3030-1](#) [SBBTH1512-1](#) [SBBTH1508-1](#) [SBB2808-1](#) [SBB2805-1](#) [SBB1605-1](#) [SBB1602-1](#) [SBB1005-1](#) [SBB1002-1](#) [3426](#) [32P15WE](#) [ZAS1X206203XRPU160](#) [SBBTH3040-1](#) [SBB0004-1](#) [SBB830-QTY10](#) [7115](#) [923749-I](#) [RE013-LF](#) [RE014-LF](#) [RE015-LF](#) [RE1210-LF](#) [RE200-C3](#) [RE210-S1](#) [RE317-HP](#) [RE438-LF](#)