



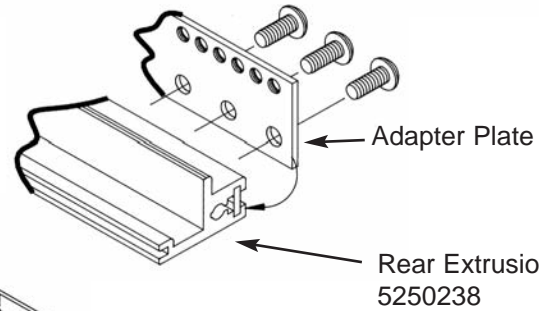
# Non EMC DIN-Based VectorPak™ Subracks

Rack Components  
& Accessories



## Adapter Plates (Z-Rail Type)

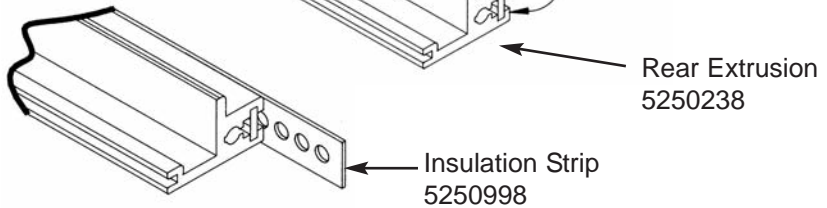
Part No.	Description
AS1/2 (Pkg of 2)	Adapter plate for mounting DIN connectors directly onto subrack, 84 tapped holes (2.5mm x 4.5mm pitch) To be used without backplane



## Insulation Strips

Mounted between backplane and rear extrusion

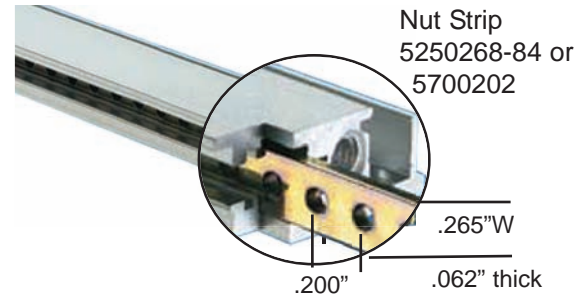
Part No.	HP	Width
5250998-84	84	17.00" (431.8mm)



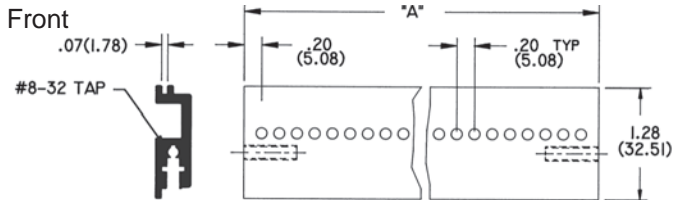
## Nut Strips

Threaded mounting holes spaced at 0.2" centers slide into extrusion grooves, can be used to anchor panels, cards or other components. Used on front & rear extrusions on all Vector DIN based metric subracks.

Part No.	HP	Width
5250268-84	84	17" (431.8mm)
5250268-63	63	12.8" (325.1mm)
5250268-42	42	8.6" (218.4mm)
5250268-21	21	4.4" (111.8mm)



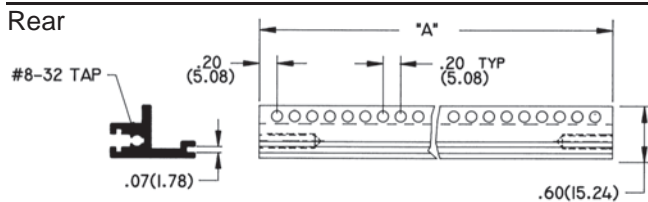
# Extrusions



All extrusions available in any length

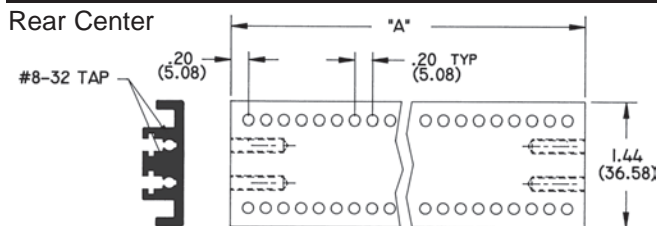
Part No.	HP	A
5250236-84	84	17.00" (431.8)
5250236-63	63	12.80" (325.8)
5250236-42	42	8.60" (218.4)
5250236-21	21	4.40" (11.8)

Pack of 12 8-32 screws, P/N HD94



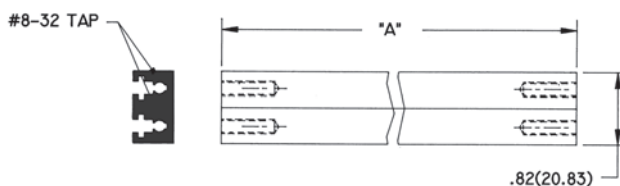
Part No.	HP	A
5250238-84	84	17.00" (431.8)
5250238-63	63	12.80" (325.8)
5250238-42	42	8.60" (218.4)
5250238-21	21	4.40" (11.8)

Pack of 12 8-32 screws, P/N HD94



Part No.	HP	A
5250237-84	84	17.00" (431.8)
5250237-63	63	12.80" (325.8)
5250237-42	42	8.60" (218.4)
5250237-21	21	4.40" (11.8)

Pack of 12 8-32 screws, P/N HD94

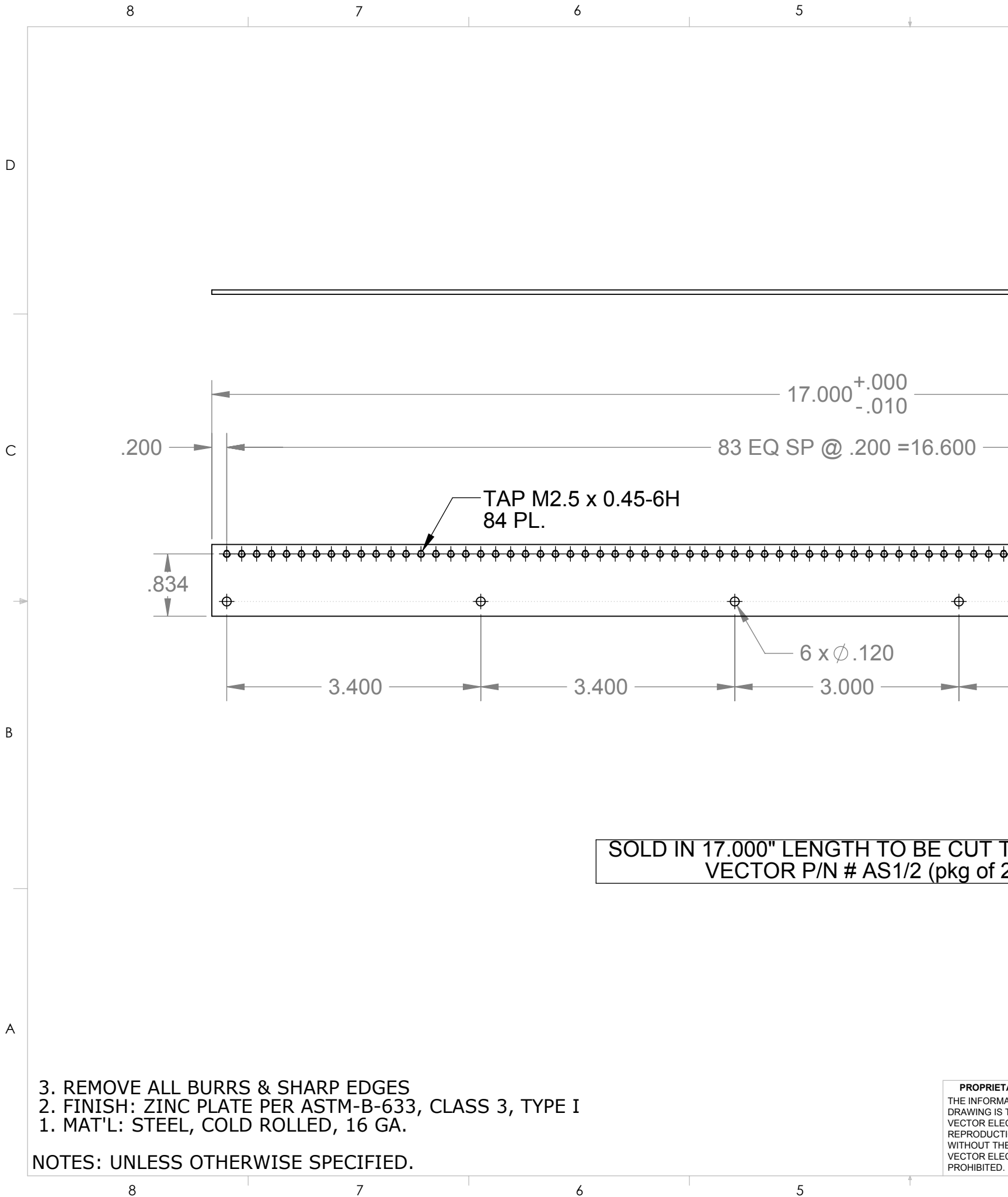


Part No.	HP	A
5250229-84	84	17.00" (431.8)
5250229-63	63	12.80" (325.8)
5250229-42	42	8.60" (218.4)
5250229-21	21	4.40" (11.8)

Pack of 12 8-32 screws, P/N HD94

Non EMC  
Subracks





8

7

6

5

D

C

B

A

17.000<sup>+0.000</sup>/<sub>-.010</sub>

.200 83 EQ SP @ .200 = 16.600

TAP M2.5 x 0.45-6H  
84 PL.

.834

6 x Ø .120

3.400

3.400

3.000

SOLD IN 17.000" LENGTH TO BE CUT TO SIZE  
VECTOR P/N # AS1/2 (pkg of 2)

- 3. REMOVE ALL BURRS & SHARP EDGES
- 2. FINISH: ZINC PLATE PER ASTM-B-633, CLASS 3, TYPE I
- 1. MAT'L: STEEL, COLD ROLLED, 16 GA.

NOTES: UNLESS OTHERWISE SPECIFIED.

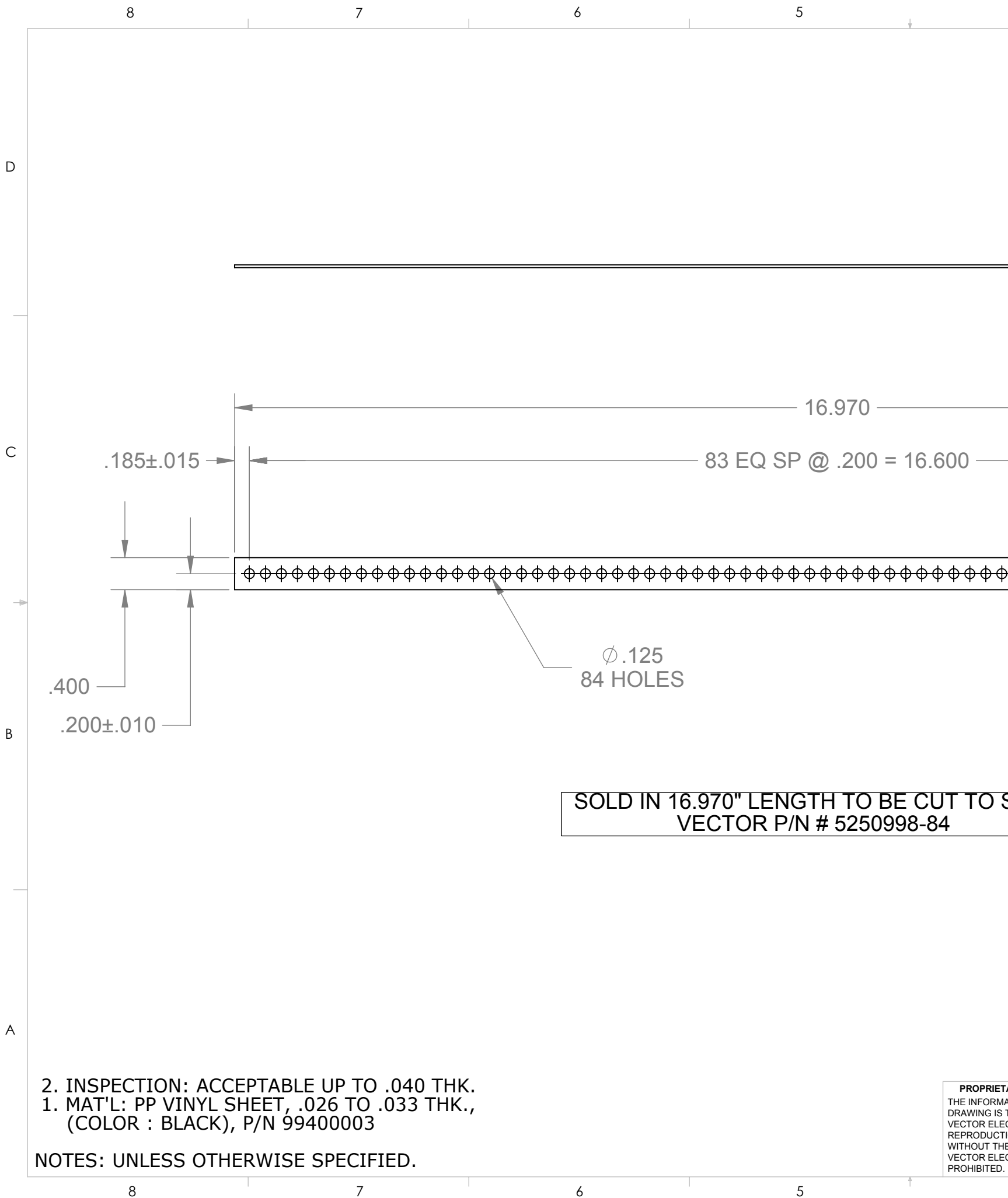
PROPRIETARY  
THE INFORMATION  
DRAWING IS THE  
VECTOR ELECTRONIC  
REPRODUCTION  
WITHOUT THE  
VECTOR ELECTRONIC  
PROHIBITED.

8

7

6

5

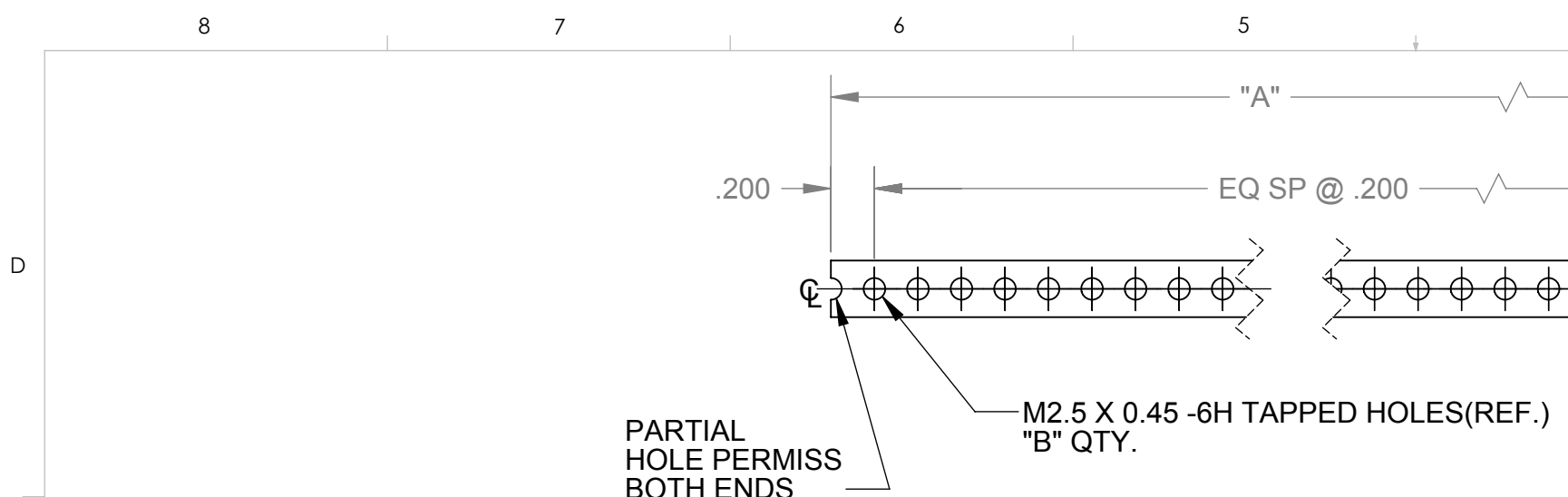


SOLD IN 16.970" LENGTH TO BE CUT TO SIZE  
 VECTOR P/N # 5250998-84

- 2. INSPECTION: ACCEPTABLE UP TO .040 THK.
- 1. MAT'L: PP VINYL SHEET, .026 TO .033 THK.,  
 (COLOR : BLACK), P/N 99400003

NOTES: UNLESS OTHERWISE SPECIFIED.

PROPRIETARY  
 THE INFORMATION  
 DRAWING IS THE  
 VECTOR ELECTRONIC  
 REPRODUCTION  
 WITHOUT THE  
 VECTOR ELECTRONIC  
 PROHIBITED.



TABULATION		
PART NO.	"A"	"B"
5250268-03	0.800	3
5250268-04	1.000	4
5250268-05	1.200	5
5250268-06	1.400	6
5250268-07	1.600	7
5250268-08	1.800	8
5250268-09	2.000	9
5250268-10	2.200	10
5250268-11	2.400	11
5250268-12	2.600	12
5250268-13	2.800	13
5250268-14	3.000	14
5250268-15	3.200	15
5250268-16	3.400	16
5250268-17	3.600	17
5250268-18	3.800	18
5250268-19	4.000	19
5250268-20	4.200	20
5250268-21	4.400	21

6

TABULATION		
PART NO.	"A"	"B"
5250268-22	4.600	22
5250268-23	4.800	23
5250268-24	5.000	24
5250268-25	5.200	25
5250268-26	5.400	26
5250268-27	5.600	27
5250268-28	5.800	28
5250268-29	6.000	29
5250268-30	6.200	30
5250268-31	6.400	31
5250268-32	6.600	32
5250268-33	6.800	33
5250268-34	7.000	34
5250268-35	7.200	35
5250268-36	7.400	36
5250268-37	7.600	37
5250268-38	7.800	38
5250268-39	8.000	39
5250268-40	8.200	40
5250268-41	8.400	41
5250268-42	8.600	42

6

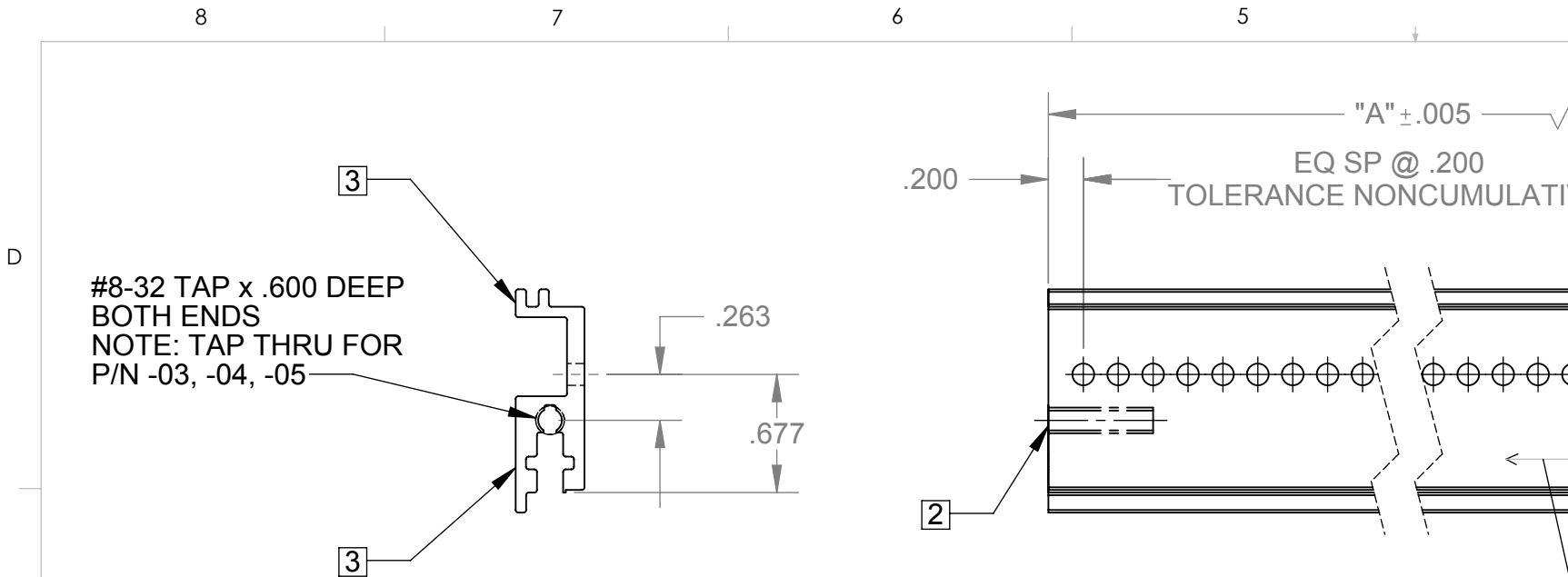
TABULATION	
PART NO.	"B"
5250268-43	22
5250268-44	23
5250268-45	24
5250268-46	25
5250268-47	26
5250268-48	27
5250268-49	28
5250268-50	29
5250268-51	30
5250268-52	31
5250268-53	32
5250268-54	33
5250268-55	34
5250268-56	35
5250268-57	36
5250268-58	37
5250268-59	38
5250268-60	39
5250268-61	40
5250268-62	41
5250268-63	42

6

6. DASH NOS. INDICATE RACK SPACE IN "HP" UNITS (HOLE PITCH OF .200)  
 5. DEGREASE & SEAL CUT ENDS  
 4. MAKE FROM P/N # 5700202  
 3. REMOVE ALL BURRS & SHARP EDGES  
 2. FINISH: ZINC PLATE PER ASTM-B-633, CLASS 3, TYPE I  
 1. MAT'L: STEEL, COLD ROLLED, 16 GA.(.0598) (REF.)

NOTES: UNLESS OTHERWISE SPECIFIED.

PROPRIETARY  
 THE INFORMATION  
 DRAWING IS THE  
 VECTOR ELECTRONIC  
 REPRODUCTION  
 WITHOUT THE  
 VECTOR ELECTRONIC  
 PROHIBITED.



TABULATION			
PART NO.	7	"A"	"B"
5250236-03		0.800	3
5250236-04		1.000	4
5250236-05		1.200	5
5250236-06		1.400	6
5250236-07		1.600	7
5250236-08		1.800	8
5250236-09		2.000	9
5250236-10		2.200	10
5250236-11		2.400	11
5250236-12		2.600	12
5250236-13		2.800	13
5250236-14		3.000	14
5250236-15		3.200	15
5250236-16		3.400	16
5250236-17		3.600	17
5250236-18		3.800	18
5250236-19		4.000	19
5250236-20		4.200	20
5250236-21		4.400	21

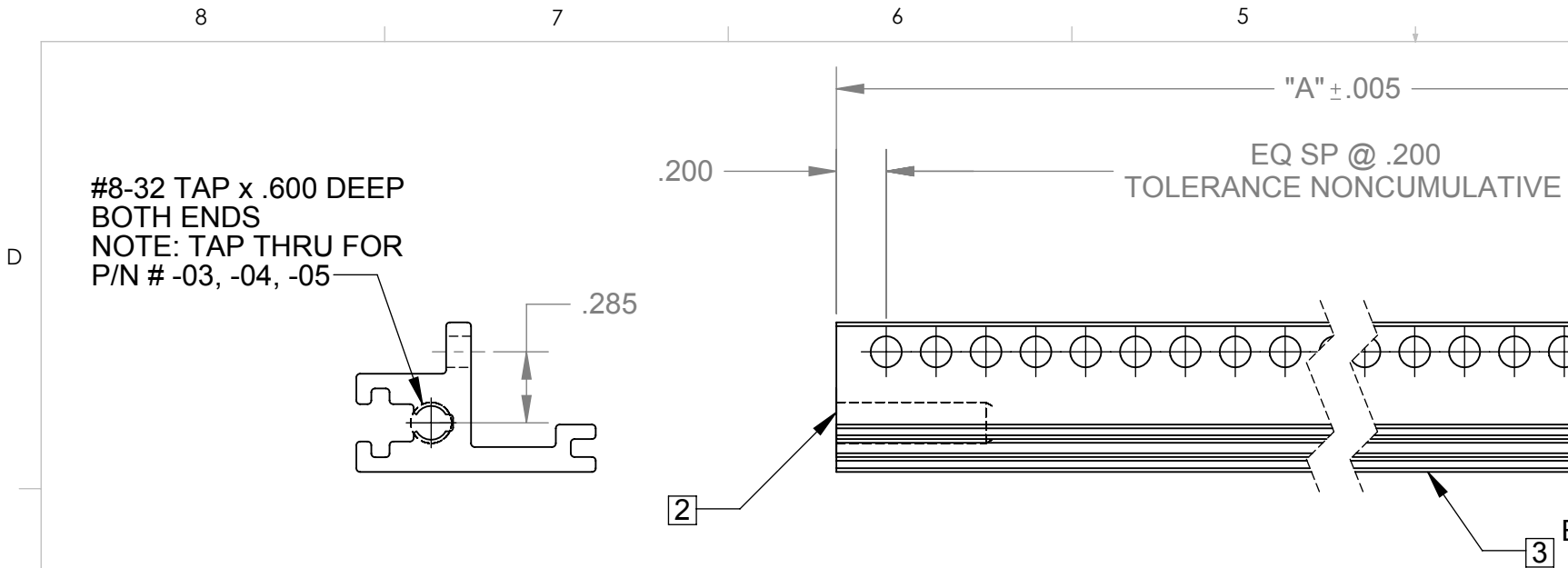
TABULATION			
PART NO.	7	"A"	"B"
5250236-22		4.600	22
5250236-23		4.800	23
5250236-24		5.000	24
5250236-25		5.200	25
5250236-26		5.400	26
5250236-27		5.600	27
5250236-28		5.800	28
5250236-29		6.000	29
5250236-30		6.200	30
5250236-31		6.400	31
5250236-32		6.600	32
5250236-33		6.800	33
5250236-34		7.000	34
5250236-35		7.200	35
5250236-36		7.400	36
5250236-37		7.600	37
5250236-38		7.800	38
5250236-39		8.000	39
5250236-40		8.200	40
5250236-41		8.400	41
5250236-42		8.600	42

5250236A FINISH : GOLD II

- 7. DASH NO(S). INDICATE RACK SPACE IN "HP" UNITS (HOLE PITCH OF .200)
- 6. FINISH: SATIN ETCH, 7 MIN., CHEM FILM, CLEAR, CLASS 1A, IAW MIL-C-5541
- 5. DEGREASE
- 4. REMOVE ALL BURS & SHARP EDGES
- 3. FINE GRAIN FINISH ON SURFACES INDICATED (3 PL.)
- 2. ENDS TO BE SQUARE WITHIN: .0025 PER INCH OF WIDTH
- 1. MAT'L: MAKE FROM P/N # 5280233

NOTES: UNLESS OTHERWISE SPECIFIED.

PROPRIETARY  
 THE INFORMATION  
 DRAWING IS THE  
 VECTOR ELECTRONIC  
 REPRODUCTION  
 WITHOUT THE  
 VECTOR ELECTRONIC  
 PROHIBITED.



TABULATION			
PART NO.	7	"A"	"B"
5250238-03		0.800	3
5250238-04		1.000	4
5250238-05		1.200	5
5250238-06		1.400	6
5250238-07		1.600	7
5250238-08		1.800	8
5250238-09		2.000	9
5250238-10		2.200	10
5250238-11		2.400	11
5250238-12		2.600	12
5250238-13		2.800	13
5250238-14		3.000	14
5250238-15		3.200	15
5250238-16		3.400	16
5250238-17		3.600	17
5250238-18		3.800	18
5250238-19		4.000	19
5250238-20		4.200	20
5250238-21		4.400	21

TABULATION			
PART NO.	7	"A"	"B"
5250238-22		4.600	22
5250238-23		4.800	23
5250238-24		5.000	24
5250238-25		5.200	25
5250238-26		5.400	26
5250238-27		5.600	27
5250238-28		5.800	28
5250238-29		6.000	29
5250238-30		6.200	30
5250238-31		6.400	31
5250238-31		6.600	32
5250238-33		6.800	33
5250238-34		7.000	34
5250238-35		7.200	35
5250238-36		7.400	36
5250238-37		7.600	37
5250238-38		7.800	38
5250238-39		8.000	39
5250238-40		8.200	40
5250238-41		8.400	41
5250238-42		8.600	42

5250238A FINISH: GOLD IR

- 7. DASH NO(S). INDICATE RACK SPACE IN "HP" UNITS (HOLE PITCH OF .200)
- 6. FINISH: SATIN ETCH, 7 MIN., CHEM FILM, CLEAR, CLASS 1A, IAW MIL-C-5541
- 5. DEGREASE
- 4. REMOVE ALL BURS & SHARP EDGES
- 3. FINE GRAIN FINISH ON SURFACES INDICATED ONLY
- 2. ENDS TO BE SQUARE WITHIN: .0025 PER INCH OF WIDTH
- 1. MAT'L: MAKE FROM P/N # 5280234

NOTES: UNLESS OTHERWISE SPECIFIED.

PROPRIETARY  
THE INFORMATION  
DRAWING IS THE  
VECTOR ELECTRONIC  
REPRODUCTION  
WITHOUT THE  
VECTOR ELECTRONIC  
PROHIBITED.

8

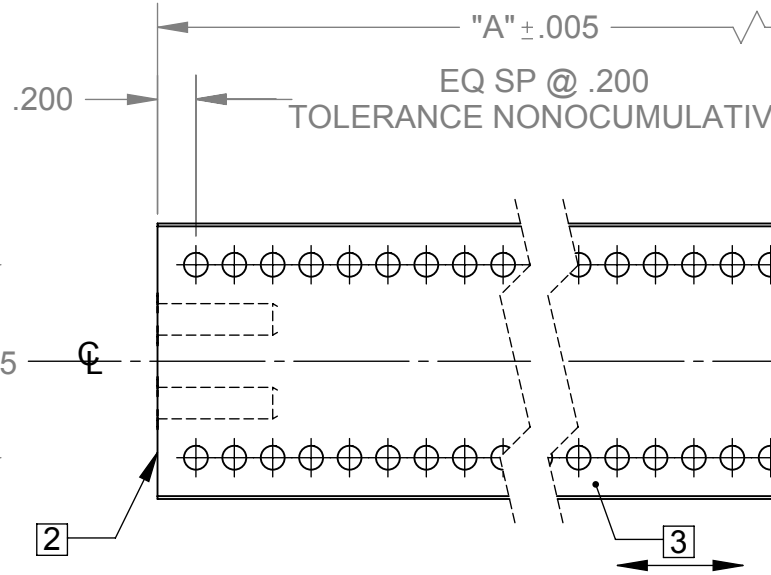
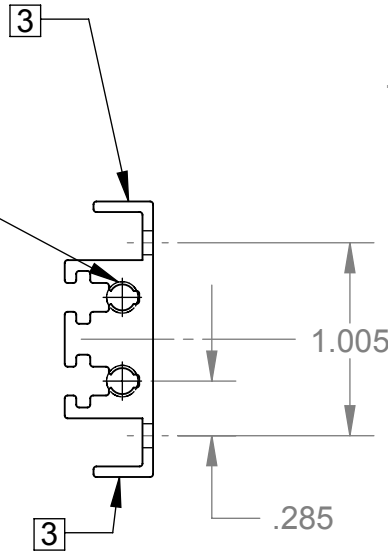
7

6

5

D

#8-32 TAP x .600 DEEP  
 4 PL.  
 NOTE: TAP THRU FOR  
 P/N # -03, -04, -05



C

B

A

TABULATION			
PART NO.	7	"A"	"B"
5250237-03		0.800	3
5250237-04		1.000	4
5250237-05		1.200	5
5250237-06		1.400	6
5250237-07		1.600	7
5250237-08		1.800	8
5250237-09		2.000	9
5250237-10		2.200	10
5250237-11		2.400	11
5250237-12		2.600	12
5250237-13		2.800	13
5250237-14		3.000	14
5250237-15		3.200	15
5250237-16		3.400	16
5250237-17		3.600	17
5250237-18		3.800	18
5250237-19		4.000	19
5250237-20		4.200	20
5250237-21		4.400	21

TABULATION			
PART NO.	7	"A"	"B"
5250237-22		4.600	22
5250237-23		4.800	23
5250237-24		5.000	24
5250237-25		5.200	25
5250237-26		5.400	26
5250237-27		5.600	27
5250237-28		5.800	28
5250237-29		6.000	29
5250237-30		6.200	30
5250237-31		6.400	31
5250237-32		6.600	32
5250237-33		6.800	33
5250237-34		7.000	34
5250237-35		7.200	35
5250237-36		7.400	36
5250237-37		7.600	37
5250237-38		7.800	38
5250237-39		8.000	39
5250237-40		8.200	40
5250237-41		8.400	41
5250237-42		8.600	42

PA

52

52

52

52

52

52

52

52

52

52

52

52

52

52

52

52

52

52

52

52

- 7. DASH NO(S). INDICATE RACK SPACE IN "HP" UNITS (HOLE PITCH OF .200)
- 6. FINISH: SATIN ETCH, 7 MIN., CHEM FILM, CLEAR, CLASS 1A, IAW MIL-C-5541
- 5. DEGREASE
- 4. REMOVE ALL BURS & SHARP EDGES
- 3. FINE GRAIN FINISH ON SURFACES INDICATED (3 PL.)
- 2. ENDS TO BE SQUARE WITHIN: .0025 PER INCH OF WIDTH
- 1. MAT'L: MAKE FROM P/N # 5280220

NOTES: UNLESS OTHERWISE SPECIFIED.

PROPRIETARY  
 THE INFORMATION  
 DRAWING IS THE  
 VECTOR ELECTRONIC  
 REPRODUCTION  
 WITHOUT THE  
 VECTOR ELECTRONIC  
 PROHIBITED.

8

7

6

5





## X-ON Electronics

Largest Supplier of Electrical and Electronic Components

*Click to view similar products for [Racks & Rack Cabinet Accessories](#) category:*

*Click to view products by [Vector](#) manufacturer:*

Other Similar products are found below :

[M00-PLN](#) [F2424](#) [8351-832-A-24](#) [9104](#) [9105](#) [PLFF2000](#) [H-9163-B](#) [1427C3](#) [HTS10](#) [PC-79](#) [SC10-3A](#) [SC4-28](#) [CG3-340S/12](#) [CP-001BK](#)  
[M6123-4007-SS](#) [TS170](#) [LP40](#) [5261304-07](#) [CG3-160G](#) [7112C-PLN](#) [ALUM](#) [CM10](#) [8610-3124-S-26](#) [TS81](#) [7142](#) [GP134](#) [M6125-4007-A-24](#)  
[M6127-4007-SS](#) [PBCOVER](#) [512](#) [AEG-4000G](#) [AEG-3000G](#) [HD99](#) [SR2-66A2](#) [FP10B4HP-1](#) [SR16-66A2](#) [FP52-2](#) [1406-1006-01](#) [29478](#)  
[TS2535](#) [TS169-6](#) [CAC2](#) [HA19-3U](#) [BR-19-10-1](#) [TS180](#) [CG3-ESD](#) [SC11-1](#) [CFS-1.00/2.20](#) [AX6145WM](#) [HEC0800PB](#) [ZC633R](#)