

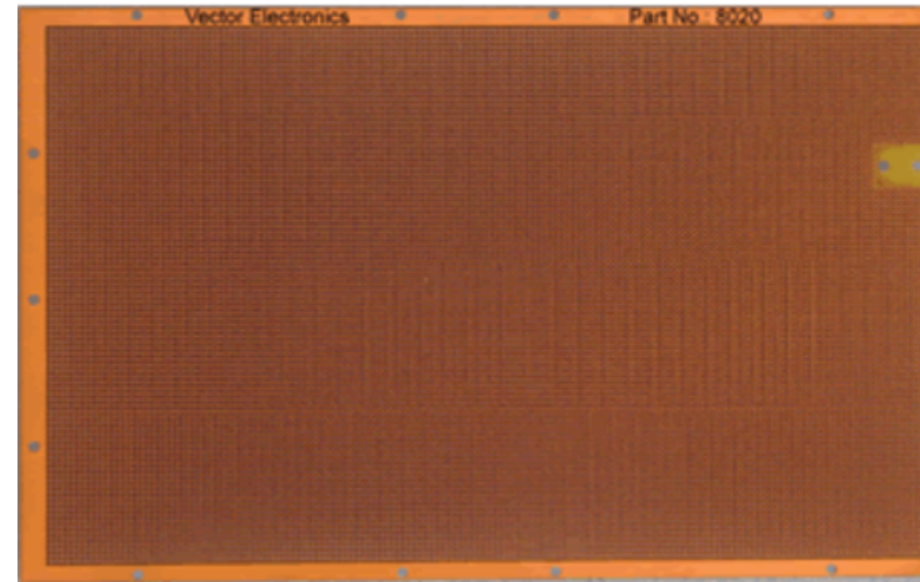
8020 Hard Metric Eurocard Plugbord™

Description

- 3U x 160mm Eurocard size for 2mm Hard Metric connector.
- Pad-Per-Hole and peripheral bus both sides.
- Pad and bus surfaces **not solder coated**.
- Accepts cPCI 2mm J1 (25 row) & J2 (22 row) connectors on edge.

Specifications

Dimensions (H x W x Thick)	3.94" x 6.30" x 0.062" (100mm x 160mm x 1.57mm)
Hole Diameter	0.025" (0.635mm) Plated Thru
Grid	0.039" x 0.039" (1mm x 1mm)
Circuit Pattern	Pad per hole - both sides
Material	FR4
UL Flammability Class	94V-0
16 Pin DIP Capacity	-
Wire-Wrap Terminals	-
Inbord Pins	K36
Wire-Wrap Connector	-



Ordering Info

Part Number : **8020** (Board only)
Part Number : **8020J1** (Board with cPCI J1 connector installed)

VECTOR ELECTRONICS AND TECHNOLOGY, INC., AN ISO 9001:2015 and AS9100 REGISTERED COMPANY

Copyright © Vector Electronics & Technology, Inc. All rights reserved. All contents of this site (including artwork, text, photos, other representations of the artworks, materials related to the artworks) are protected by copyright – any use of these materials without the express permission of Vector Electronics & Technology, Inc. is a violation of said copyrights.

[Limited Warranty](#)

X-ON Electronics

Largest Supplier of Electrical and Electronic Components

Click to view similar products for [PCBs & Breadboards category](#):

Click to view products by [Vector manufacturer](#):

Other Similar products are found below :

[8004](#) [8007](#) [8016](#) [8017](#) [8028](#) [8029](#) [1268-12](#) [1268-10](#) [1320833-1](#) [923252-R](#) [3410](#) [3396](#) [8006](#) [8015](#) [8018](#) [8019](#) [8020](#) [1268-19](#) [1268-20](#)
[8026](#) [1239-19](#) [SBBTH1520-1](#) [SBBTH1506-1](#) [SBBTH4080-1](#) [SBBTH3030-1](#) [SBBTH1512-1](#) [SBBTH1508-1](#) [SBBSM2120-1](#) [SBB2808-1](#)
[SBB2805-1](#) [SBB1605-1](#) [SBB1602-1](#) [SBB1005-1](#) [SBB1002-1](#) [3426](#) [32P15WE](#) [ZAS1X206203XRPU160](#) [SBBTH3040-1](#) [SBB0004-1](#)
[SBB830-QTY10](#) [7115](#) [923749-I](#) [RE013-LF](#) [RE014-LF](#) [RE015-LF](#) [RE1210-LF](#) [RE200-C3](#) [RE210-S1](#) [RE317-HP](#) [RE438-LF](#)