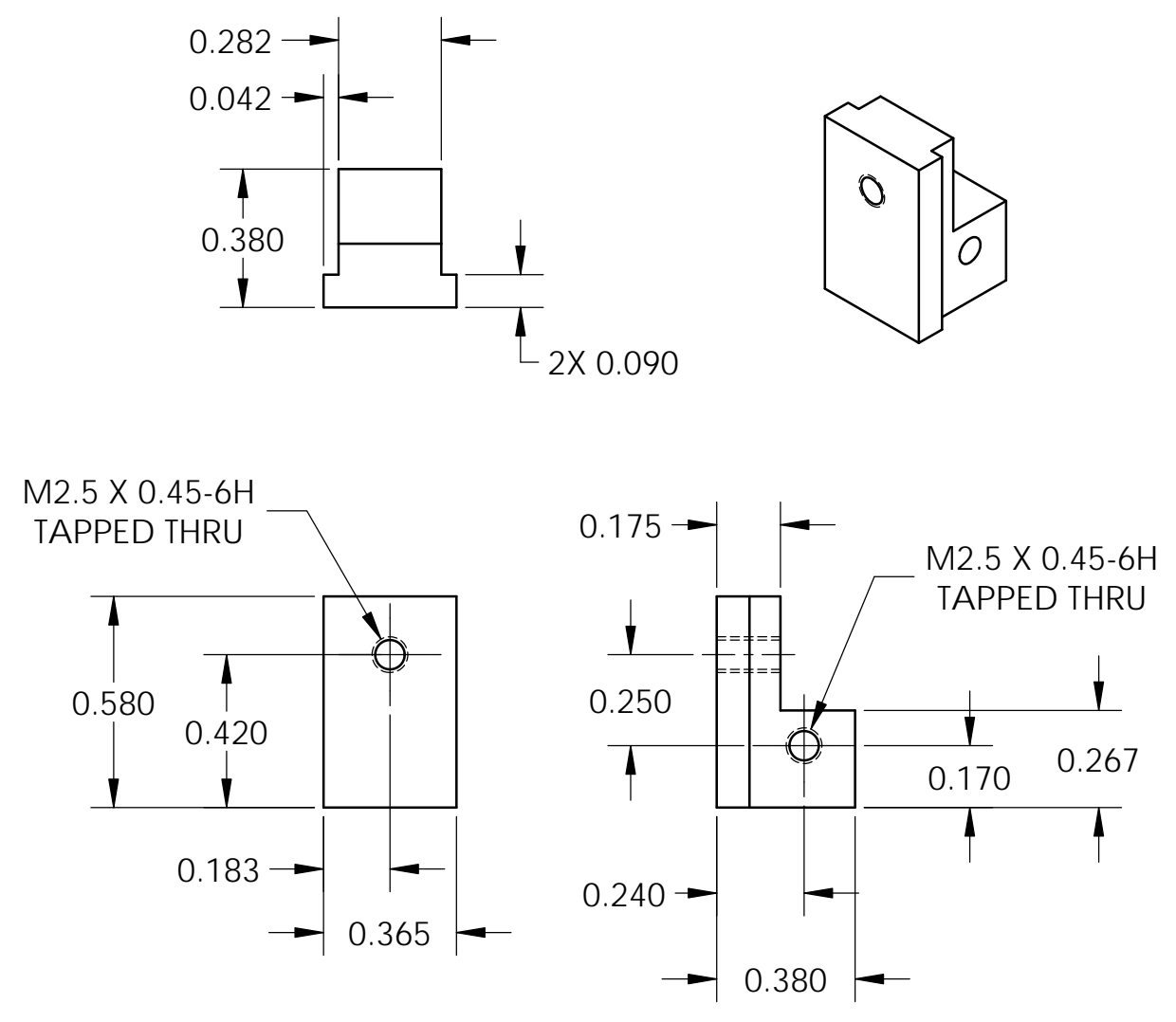
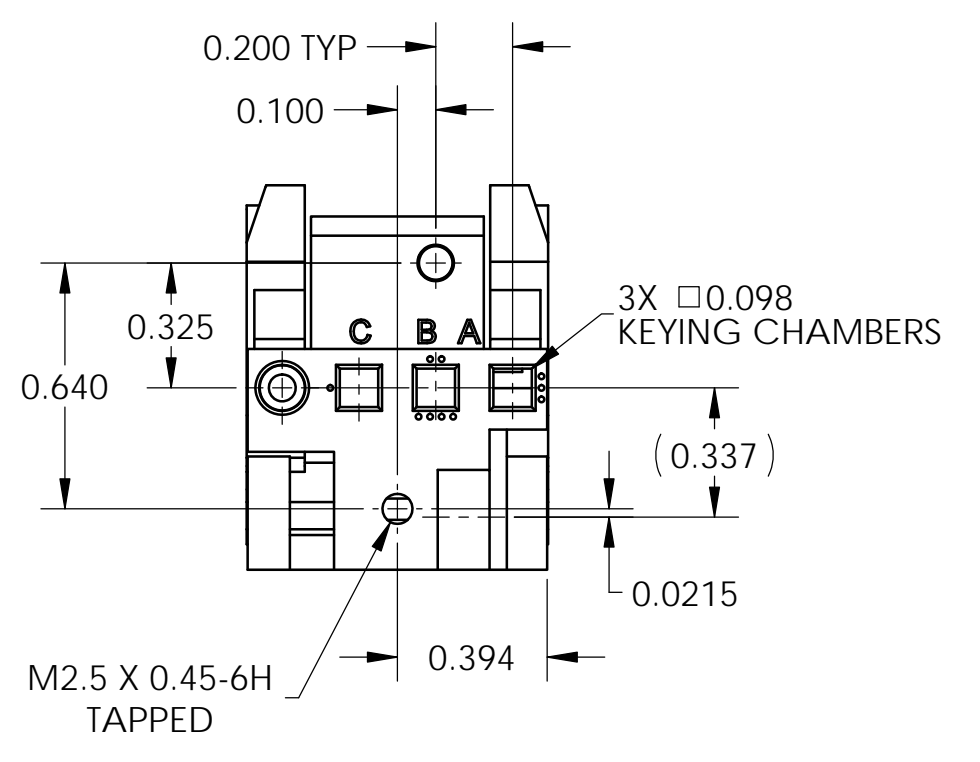
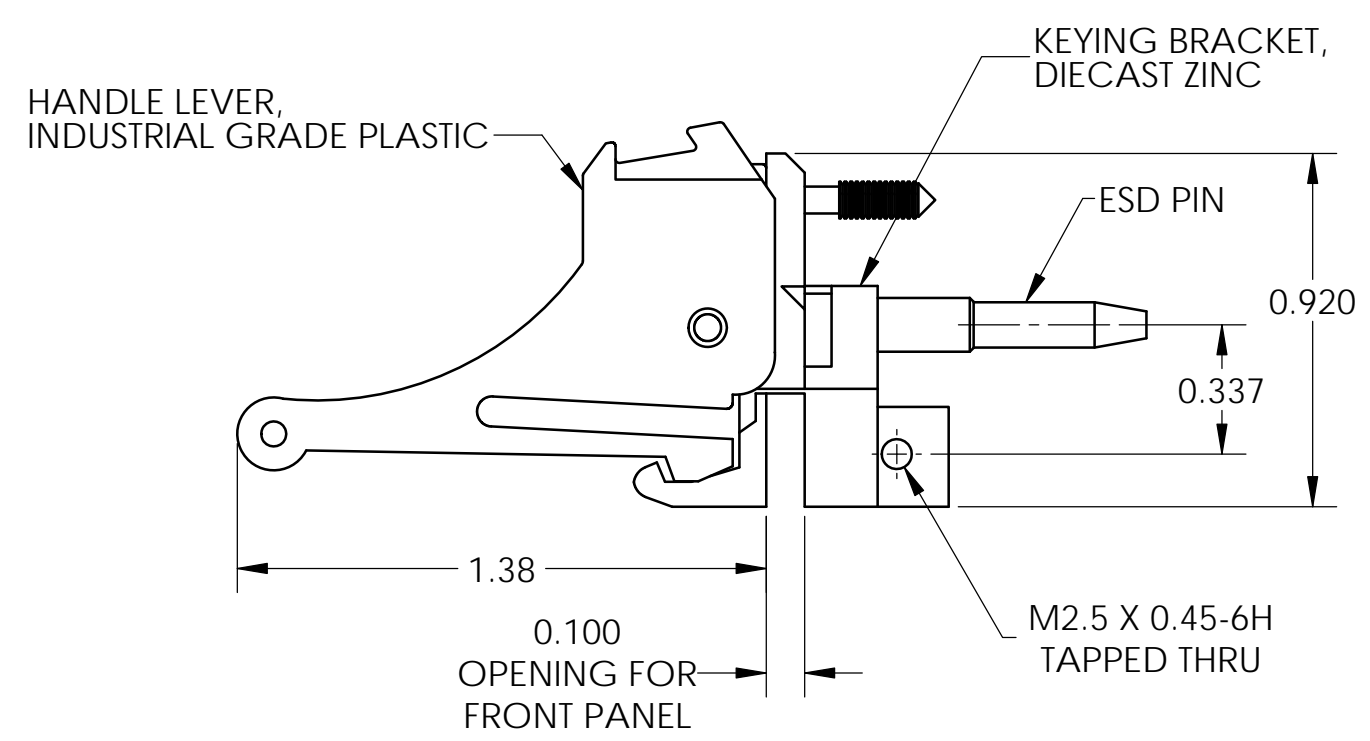
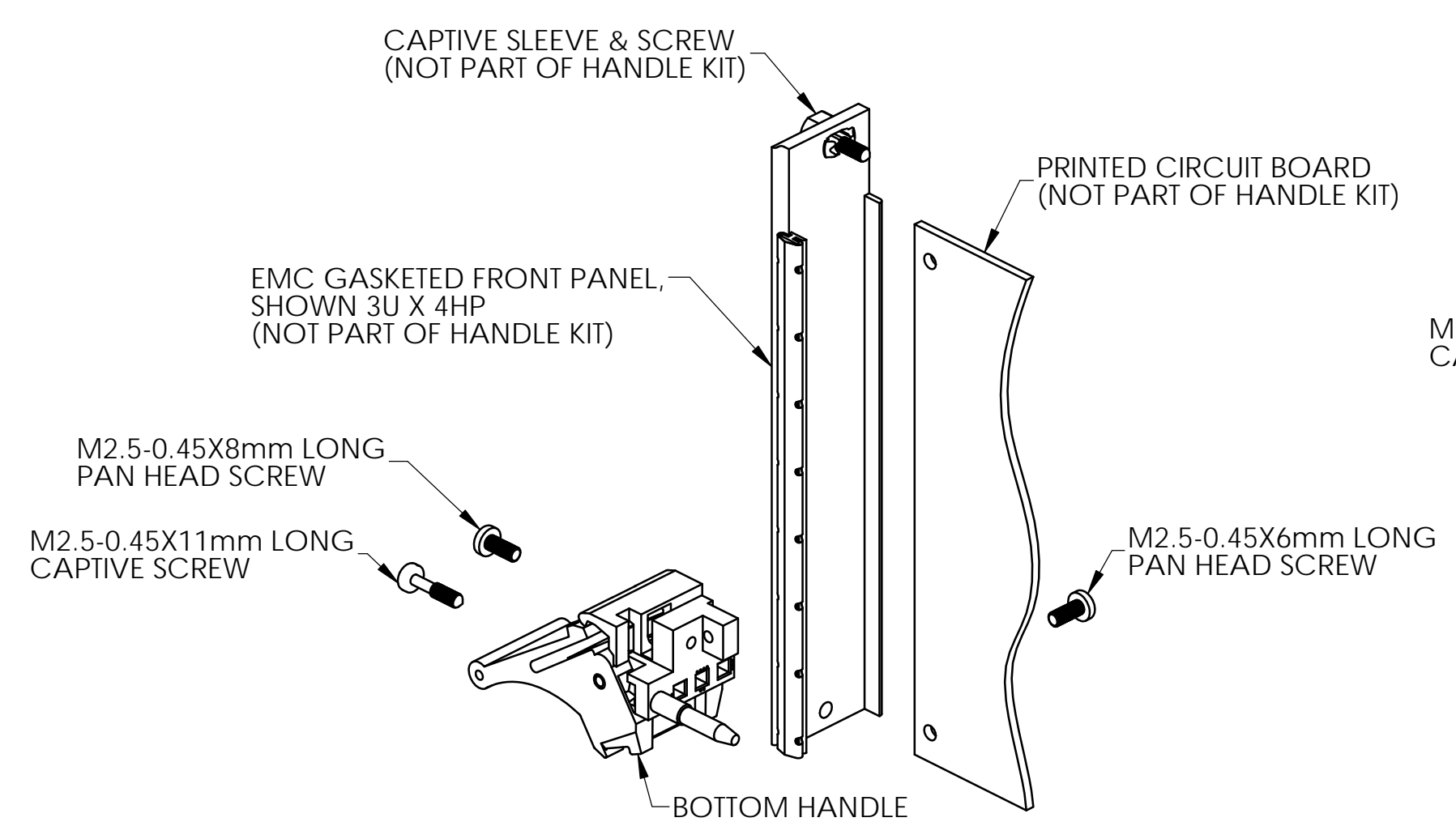
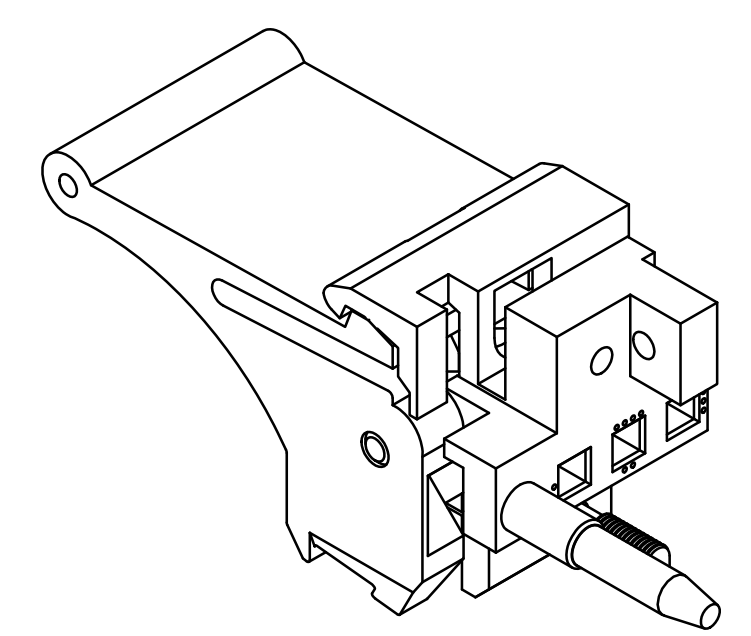
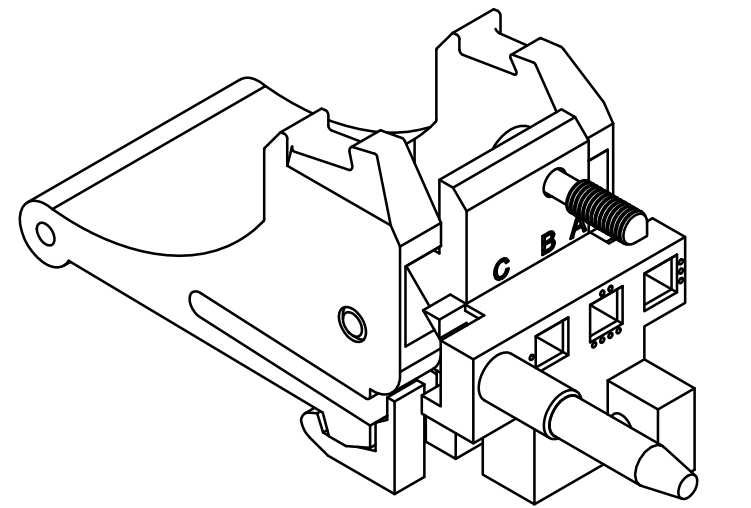
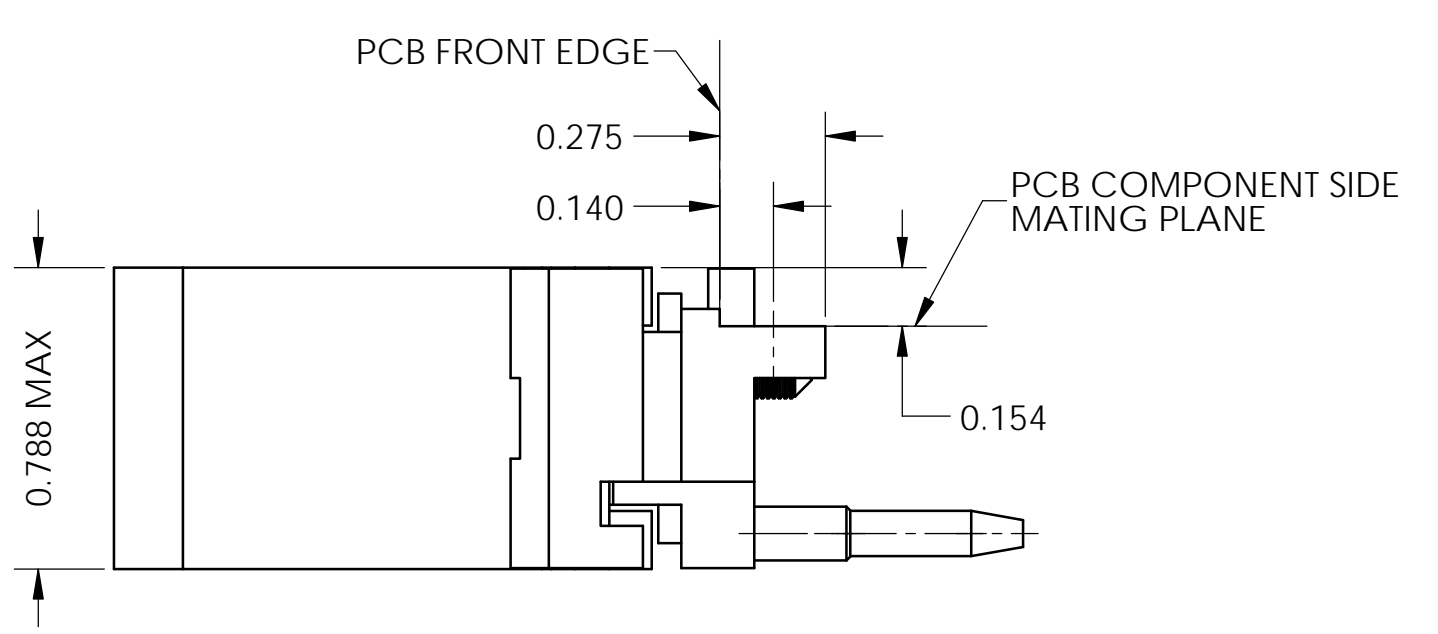
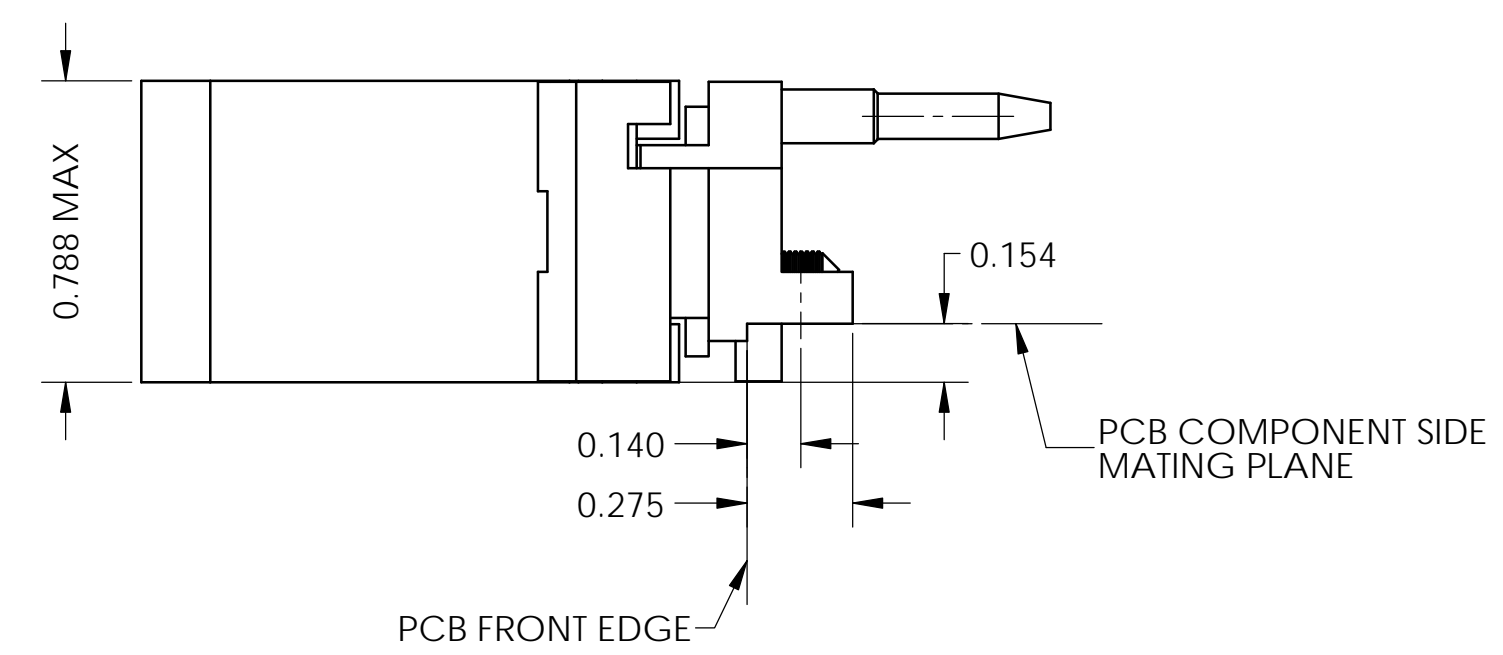


PROPRIETARY AND CONFIDENTIAL
 THE INFORMATION CONTAINED IN THIS DRAWING IS THE SOLE PROPERTY OF
 VECTOR ELECTRONICS & TECHNOLOGY, INC. ANY REPRODUCTION IN PART
 OR AS A WHOLE WITHOUT THE WRITTEN PERMISSION OF VECTOR ELECTRONICS
 & TECHNOLOGY, INC. IS PROHIBITED.

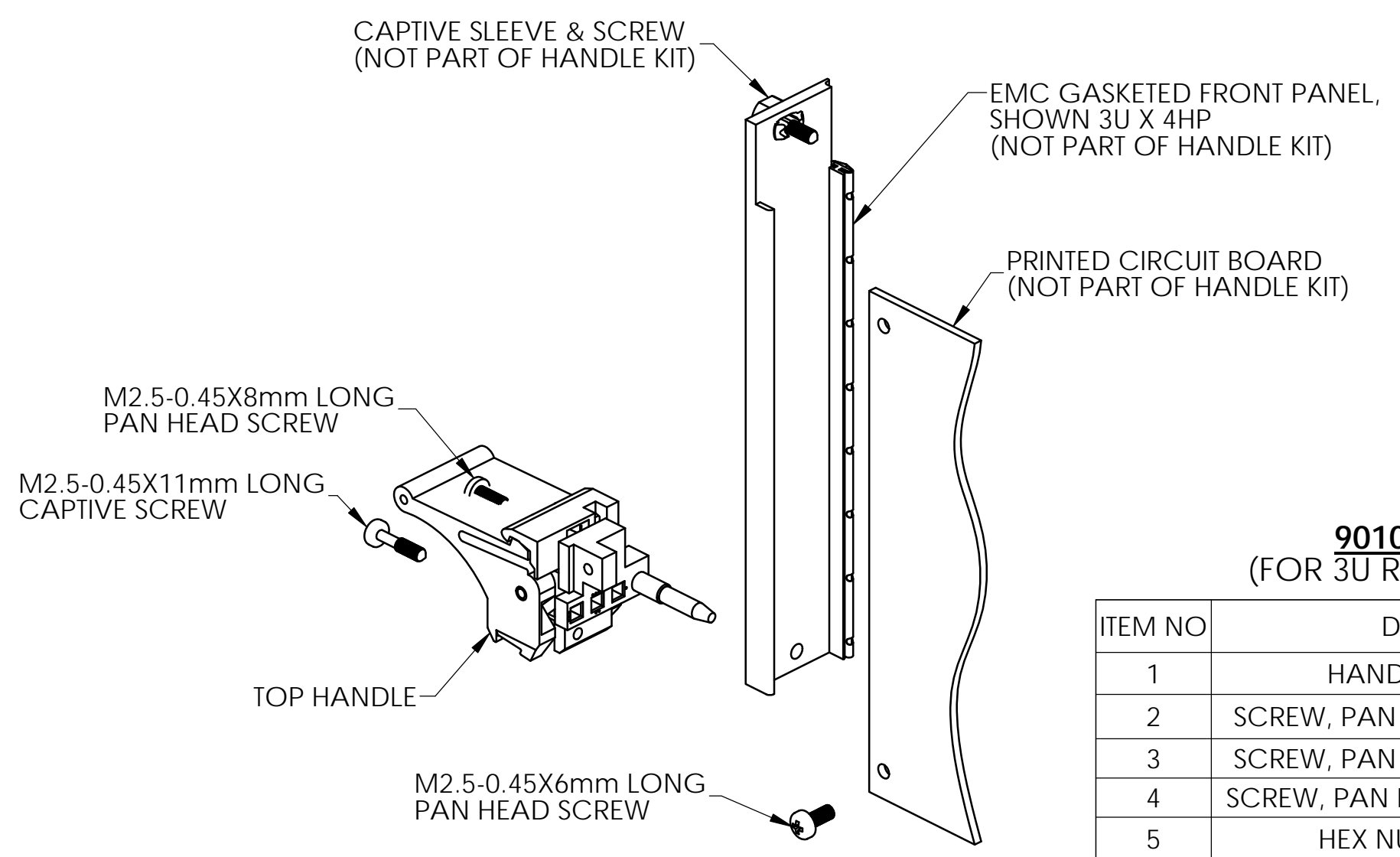
| REVISIONS | | | | |
|-----------|-----|--|----------|----------|
| ZONE | REV | DESCRIPTION | DATE | APPROVED |
| ALL | A | INITIAL RELEASE | 02/27/15 | |
| ALL | B | ADDED PART - 9010002 FOR RTM PANELS | 09/19/17 | |
| ALL | C | ADDED NOTE FOR OPTIONAL CENTER L-BRACKET | 05/23/19 | |



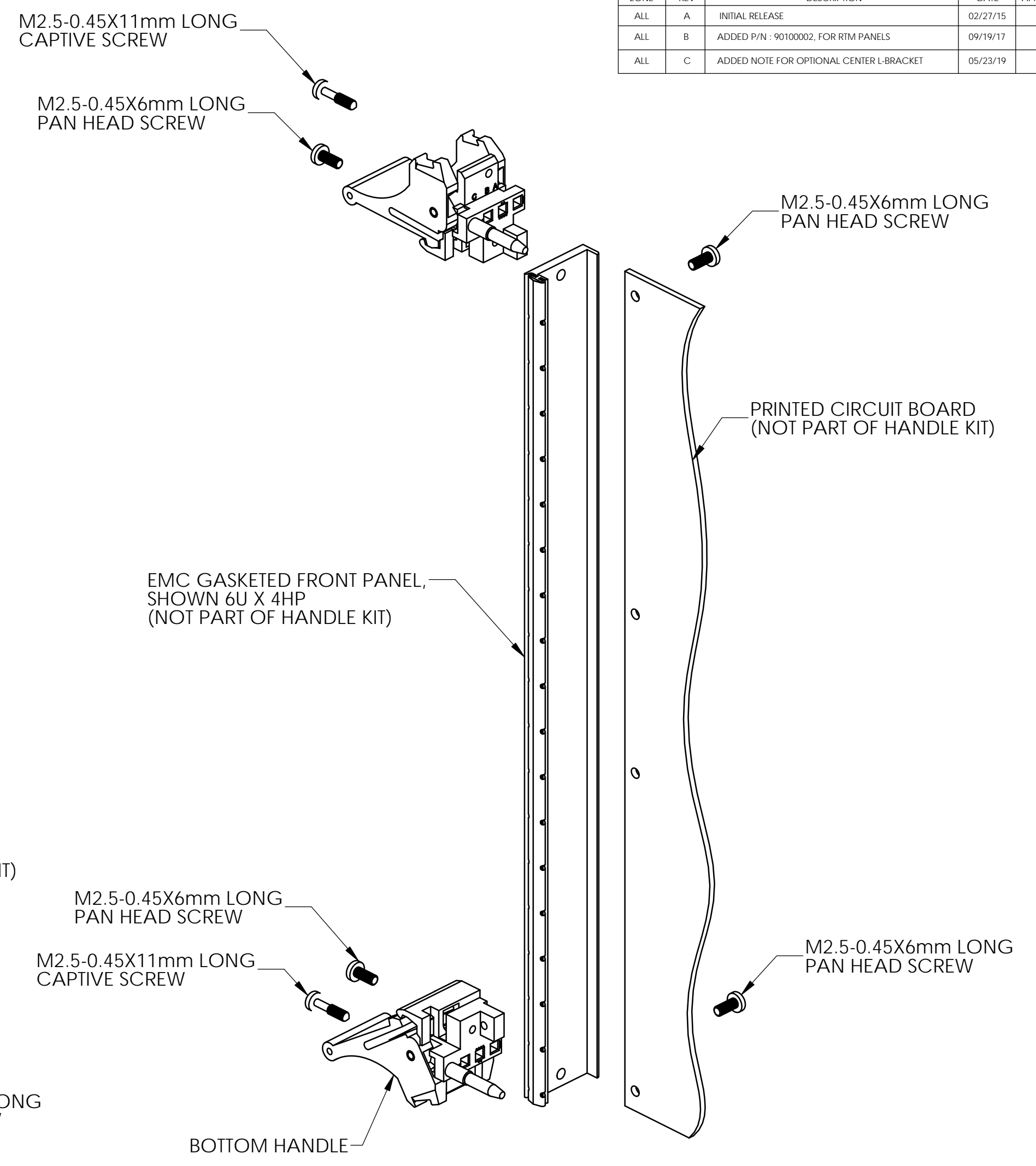
L-BRACKET DETAIL (PART OF 90100016)
 CENTER L-BRACKET MOUNTING IS OPTIONAL AND THAT IT CAN BE ORIENTED UP OR DOWN, USER MUST FIND THE FRONT PANEL LOCATION DEPENDING ON THE POSITION OF L-BRACKET AND WHICH HOLE WILL BE USED.



EXPLODED VIEW 3U FRONT PLUG-IN CARD ASSEMBLY



EXPLODED VIEW 3U RTM PLUG-IN CARD ASSEMBLY



EXPLODED VIEW 6U OR 9U PLUG-IN CARD ASSEMBLY

90100016 PARTS LIST (FOR 6U OR 9U FRONT PANEL ASSEMBLY)

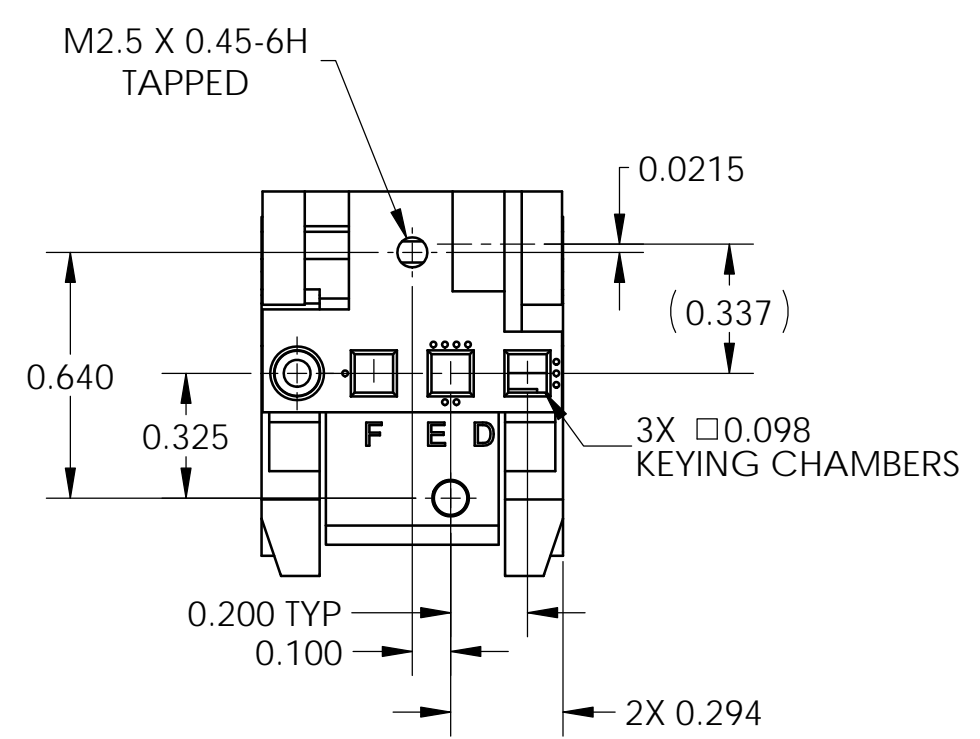
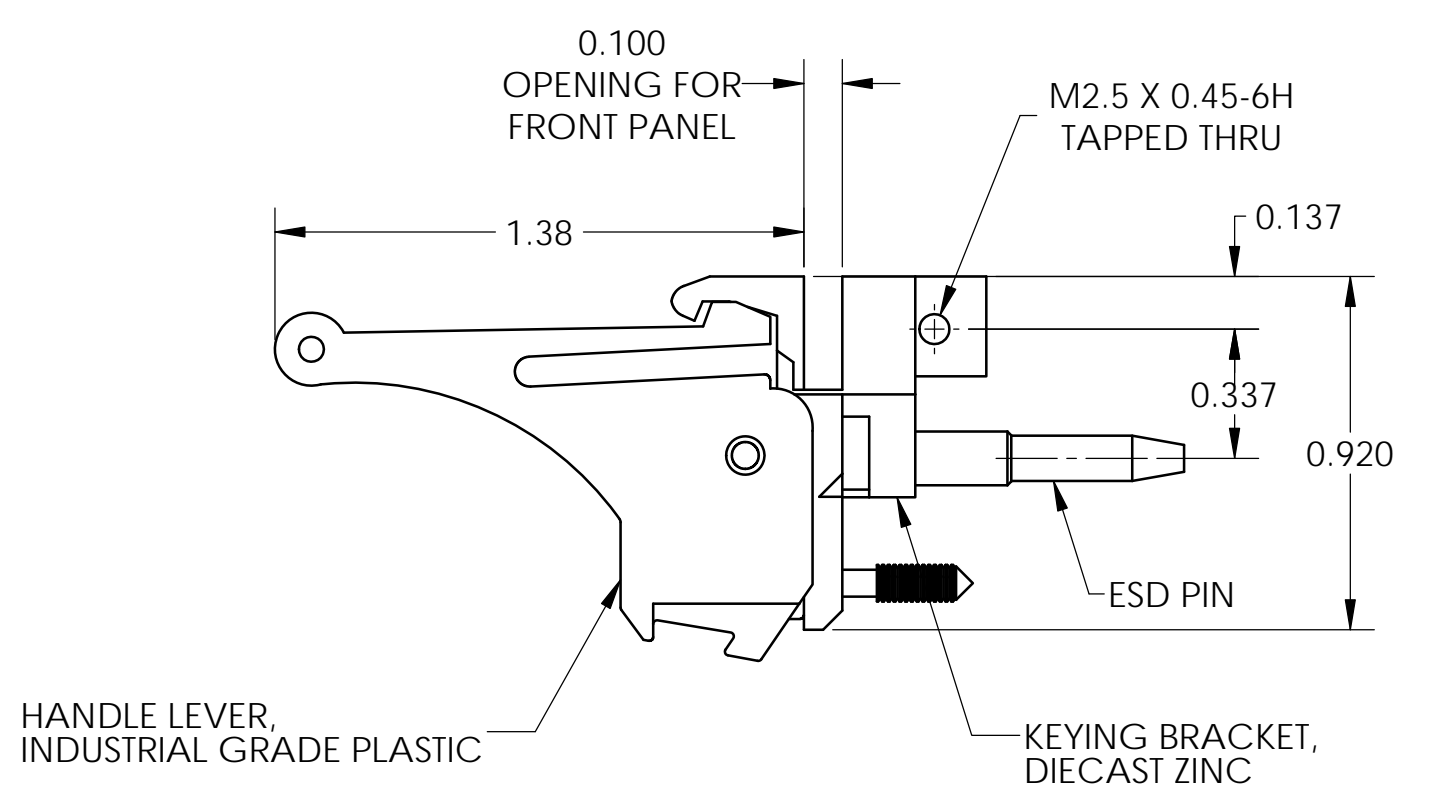
| ITEM NO | DESCRIPTION | QTY | U/M |
|---------|---------------------------------|-----|------|
| 1 | HANDLE, BOTTOM, TYPE IV | 1 | EACH |
| 2 | HANDLE, TOP, TYPE IV | 1 | EACH |
| 3 | L-BRACKET, METAL (OPTIONAL) | 1 | EACH |
| 4 | SCREW, PAN HEAD, M2.5-0.45X6mm | 5 | EACH |
| 5 | SCREW, CAPTIVE, M2.5-0.45X11mm | 2 | EACH |
| 6 | SCREW, FLAT HEAD, M2.5-0.45X8mm | 1 | EACH |

90100002-1 PARTS LIST (FOR 3U FRONT PANEL ASSEMBLY)

| ITEM NO | DESCRIPTION | QTY | U/M |
|---------|---------------------------------|-----|------|
| 1 | HANDLE, BOTTOM, TYPE IV | 1 | EACH |
| 2 | SCREW, PAN HEAD, M2.5-0.45X6mm | 1 | EACH |
| 3 | SCREW, PAN HEAD, M2.5-0.45X8mm | 1 | EACH |
| 4 | SCREW, PAN HEAD, M2.5-0.45X10mm | 2 | EACH |
| 5 | HEX NUT, M2.5X0.45-6H | 2 | EACH |
| 6 | SCREW, CAPTIVE, M2.5-0.45X11mm | 2 | EACH |
| 7 | WASHER, SPLIT LOCK, #3 | 2 | EACH |

90100002 PARTS LIST (FOR 3U RTM PANEL ASSEMBLY)

| ITEM NO | DESCRIPTION | QTY | U/M |
|---------|---------------------------------|-----|------|
| 1 | HANDLE, TOP, TYPE IV | 1 | EACH |
| 2 | SCREW, PAN HEAD, M2.5-0.45X6mm | 1 | EACH |
| 3 | SCREW, PAN HEAD, M2.5-0.45X8mm | 1 | EACH |
| 4 | SCREW, PAN HEAD, M2.5-0.45X10mm | 2 | EACH |
| 5 | HEX NUT, M2.5X0.45-6H | 2 | EACH |
| 6 | SCREW, CAPTIVE, M2.5-0.45X11mm | 2 | EACH |
| 7 | WASHER, SPLIT LOCK, #3 | 2 | EACH |



UNLESS OTHERWISE SPECIFIED: DIMENSIONS ARE IN INCHES

TOLERANCES: DEC X.X ±0.1, DEC X.XX ±0.03, DEC X.XXX ±0.010, FRACTIONS ±0.050, ANGLES ±1°

THIRD ANGLE PROJECTION

MATERIAL FINISH

NAME: TRISHAR, DATE: 08/31/12

VECTOR ELECTRONICS & TECHNOLOGY, INC. 11115 VANOWEN ST., NORTH HOLLYWOOD, CA 91605

INJECTOR/EJECTOR HANDLE, TYPE IV 1101.10

SIZE: **D** DWG. NO.: **IEL-TYPE-IV** REV: **B**

SCALE: 1:1 | CAGE CODE: 82893 | SHEET 1 OF 1

X-ON Electronics

Largest Supplier of Electrical and Electronic Components

Click to view similar products for [Mounting Fixings](#) category:

Click to view products by [Vector](#) manufacturer:

Other Similar products are found below :

[5912235-2](#) [007541](#) [627](#) [M3783-7001](#) [71-074914-006](#) [75-69211-3P](#) [75-69214-6P](#) [75-69220-27S](#) [75-69224-5S](#) [7717-8DAP](#) [85047GULPT](#)
[85048GBESR](#) [FPK-02-R10](#) [PMS27488-001-01](#) [1-18023-0](#) [H-118-2](#) [DB1](#) [1302030464](#) [DC37-22-21PX](#) [1302010957](#) [1302263564](#)
[1302340393](#) [1404-0016-78](#) [14540](#) [1561-60](#) [1566](#) [1566](#) [BR16A](#) [NT20SATT01](#) [22594-8](#) [KBB-141](#) [89078GBEPR](#) [915060](#) [SF4011-60101](#)
[97-CS-50](#) [1671](#) [1855-54](#) [T-2085-SP](#) [20800240002](#) [21899-4](#) [2193](#) [2518](#) [25745-1](#) [H-118-1](#) [354467](#) [37184](#) [4658](#) [4665](#) [4731](#) [BRACKET-RA-](#)
[30](#)