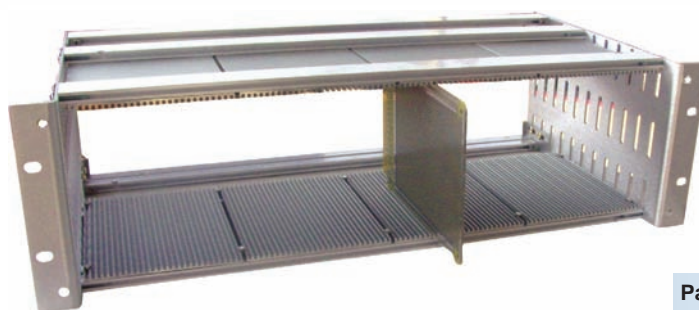
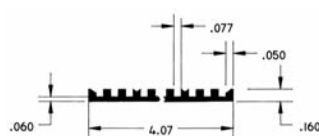




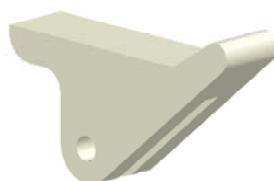
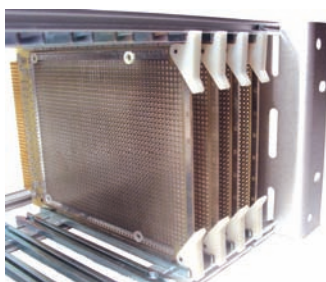
EIA -Based VectorPak™ Subrack Systems



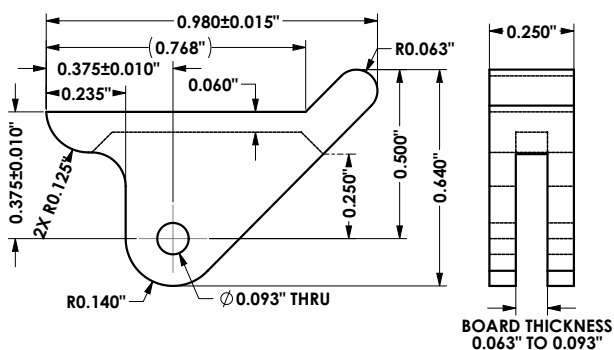
CCA13C/90 - Assembled Subrack with continuous guide plate.



CCA14F/90 - Subrack frame only



Rotation Type Ejector Handle - HA9



Part No.	Pkg Qty
HA9/4	4
HA9/C	100

- Card ejector, corner mounting
- Supports up to 40 lbs extraction force
- White nylon, (hardware included)

VectorPak™ Continuous Guide Plate

Card Racks with Continuous Guide Plate allows card placement on 0.150" centers. Guide plates created from extruded 6063-T6 aluminum. 0.80" thick brushed aluminum side plates with clear irridite finish. Rear "T" Struts included for mounting of connectors (Vector P/N HD34).

Part No.	Dimensions (H x W x D)	Description/ Installed
2U Rack CCA10C/90	Card height min. 0.75" to 2.75" max. X 6.5" L 2U (3.50") X 19.0" X 12.0"	Continuous guide plate, conductive
3U Rack CCA13C/90	Card height min. 2.50" to 4.50" max. X 6.5" L 3U (5.25") X 19.0" X 9.0"	Continuous guide plate, conductive
3U Rack CCA14C/90	Card height min. 2.50" to 4.50" max. X 9.6" L 3U (5.25") X 19.0" X 12.0"	Continuous guide plate, conductive
4U Rack CCA15C/90	Card height min. 4.25" to 6.25" max. X 9.6" L 4U (7.00") X 19.0" X 12.0"	Continuous guide plate, conductive

VectorPak™ Card Frame Only

Card Rack Frame only, no card guides (guides sold separately). Will accept any VectorPak™ CG2-series card guide. More economical when only a few cards needed. Rear "T"-struts included for mounting of connectors (Vector P/N HD34).

Part No. / Version	Description/ Installed	Rack Outer Dimensions (H x W x D)	Kit
2U Rack CCA10F/90	Frame only	2U (3.50") X 19" X 12"	CCK10F/90
3U Rack CCA13F/90	Frame only	3U (5.25") X 19" X 9"	CCK13F/90
4U Rack CCA15F/90	Frame only	4U (7.00") X 19" X 12"	CCK15F/90
5U Rack CCA17F/90	Frame only	5U (8.75") X 19" X 12"	CCK17F/90

Attractive & Extremely Rugged Benchtop/Desktop Outer Enclosures

SE1588
4U for 8.4"W Subrack



SE1322
3U x 22"D for 19"W Subrack



X-ON Electronics

Largest Supplier of Electrical and Electronic Components

Click to view similar products for [Racks & Rack Cabinet Accessories](#) category:

Click to view products by [Vector](#) manufacturer:

Other Similar products are found below :

[M00-PLN](#) [F2424](#) [8351-832-A-24](#) [9104](#) [9105](#) [PLFF2000](#) [H-9163-B](#) [1427C3](#) [HTS10](#) [PC-79](#) [SC10-3A](#) [SC4-28](#) [CG3-340S/12](#) [CP-001BK](#)
[M6123-4007-SS](#) [TS170](#) [LP40](#) [5261304-07](#) [CG3-160G](#) [7112C-PLN](#) [ALUM](#) [CM10](#) [8610-3124-S-26](#) [TS81](#) [7142](#) [GP134](#) [M6125-4007-A-24](#)
[M6127-4007-SS](#) [PBCOVER](#) [512](#) [AEG-4000G](#) [AEG-3000G](#) [HD99](#) [SR2-66A2](#) [FP10B4HP-1](#) [SR16-66A2](#) [FP52-2](#) [1406-1006-01](#) [29478](#)
[TS2535](#) [TS169-6](#) [CAC2](#) [HA19-3U](#) [BR-19-10-1](#) [TS180](#) [CG3-ESD](#) [SC11-1](#) [CFS-1.00/2.20](#) [HEC0800PB](#) [ZC633R](#) [140PLN](#)