



## PCB Accessories

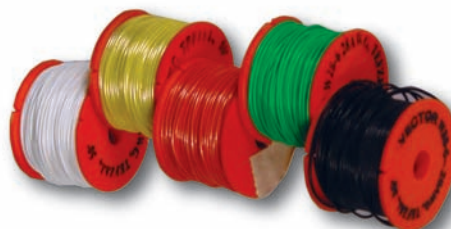
### Tefzel 28 AWG Wire Insulation Properties

Property	Test Method	Unit	Value
<b>Thermal Properties</b>			
Nominal Melting Point	ASTM D3159	°C (°F)	255-280 (491-536)
Flow Rate	ASTM D315	g/10 min	20
Upper Service Temperature	UL746	°C	135
<b>Mechanical Properties</b>			
Tensile Strength, 23°C (73°F)	ASTM D3159	MPa, (psi)	40, (6,500)
Specific Gravity	ASTM D792	-	1.71
Ultimate Elongation, 23°C (73°F)	ASTM D3159	%	300
Flexural Modulus, 23°C (73°F)	ASTM D790	MPa (psi)	1,200 (170,000)
Impact Strength, 23°C (73°F)	ASTM D256	J/m (ft-lb/in.)	No Break
Hardness, Durometer	ASTM D2240	Shore D	63
Compressive Strength	ASTM D695	MPa, (psi)	38 (5,500)
Linear Coefficient of Expansion, 0-100°C (32-212°F)	ASTM E831	mm/mm/°C in./in./°F	12.6x 10 <sup>-5</sup> (7.0 x 10 <sup>-5</sup> )
<b>Electrical Properties</b>			
Dielectric Strength, 0.25mm (0.010in.)	ASTM D149	kV/mm (V/0.001in.)	70 (1,800)
Dielectric Constant, 1MHz, 23°C (73°F)	ASTM D1531	-	2.5-2.6
Dissipation Factor, 1MHz, 23°C (73°F)	ASTM D1531	-	0.00540
Volume Resistivity	ASTM D257	ohm cm	1 x 10 <sup>11</sup> (1 x 10 <sup>11</sup> )
Arc Resistance	ASTM D49	seconds	122
<b>General Properties</b>			
Water Absorption, 24 h	ASTM D570	%	0.007
Weather and Chemical Resistance	-	-	Excellent
Limiting Oxygen Index	ASTM D2863	%	30-32

### Slit-N-Wrap® Wire

Tefzel Insulated Silver Plated Wire for use with No. 02 Bit

Part No.	AWG	Color	Spool Dia.	Feet/Spool	Spools/Pkg
W28-6A	28	green	1"	50	2
W28-6B	28	red	1"	50	2
W28-6D	28	blue	1"	50	2
W28-6E	28	white	1"	50	2
W28-6F	28	yellow	1"	50	2
W28-6H	28	black	1"	50	2
W28-6AU	28	green	1.5"	150	1
W28-6BU	28	red	1.5"	150	1
W28-6DU	28	blue	1.5"	150	1
W28-6EU	28	white	1.5"	150	1
W28-6FU	28	yellow	1.5"	150	1
W28-6HU	28	black	1.5"	150	1

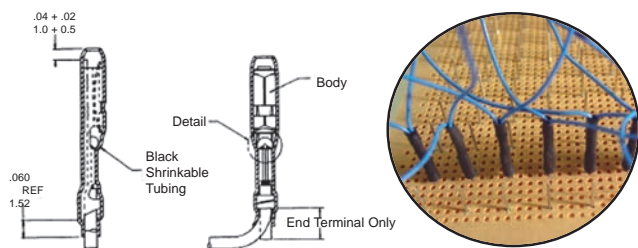
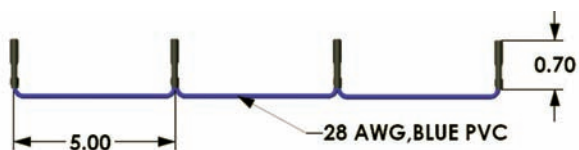


Vector 28AWG Tefzel wire is rated 300V at 150 degrees C

### T120-1

#### Slip-On Contacts

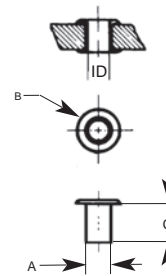
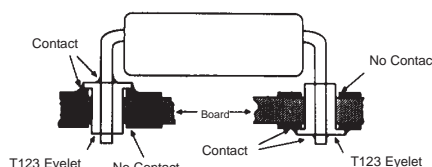
- Reels of slip-on contacts. 5" apart
- Slips onto .025" square posts
- 28 gage PVC insulated blue wire
- Temperature Range: -310 to 221°F (-190 to 105°C)



Part No.	Contact Description	Package Quantity.
T120-1/50	installed on wire	Reel of 50
T120-1/250	installed on wire	Reel of 250

### Eyelets T15.23, T123

- 2 versions provide hole size reduction  
T123 - reduces .055" dia. holes to .042"
- T123 eyelets are copper with .0003" to .0005" thick tin plating  
T15.23 - reduces .062" dia. holes to .042"
- Simulates copper thru hole plating
- Used to commit power and ground planes



Part No.	Qty	A	B	C	ID
T15.23/M	1000	.062"	.105"	.093"	.042"
T123/500	500	.055"	.105"	.093"	.042"
T123/1000	1000	.055"	.105"	.093"	.042"

## X-ON Electronics

Largest Supplier of Electrical and Electronic Components

*Click to view similar products for [Hook-up Wire](#) category:*

*Click to view products by [Vector](#) manufacturer:*

Other Similar products are found below :

[8918-BRN-1000](#) [8920-DK-BLU-1000](#) [CR6328-000](#) [01776.38.01](#) [M22759/16-14-5-500FT](#) [7053-RED-1000](#) [7053-SLATE-1000](#) [F25935-000](#)  
[F60898-000](#) [8055](#) [81044/12-18-9CS3209](#) [82A0811-4-9-G110](#) [83004-ORG-1000](#) [83005-LT-BLU-1000](#) [83025-VIO-1000](#) [8523-RED-100](#)  
[8524-WHT-100](#) [8525-ORG-1000](#) [8530-BLK-1000](#) [8530-LT-BLU-100](#) [8538-009-1000](#) [8597-LT-BLU-100](#) [8898-BLK-100](#) [138498-000](#)  
[E76065-000](#) [EPD50886A-20-9](#) [BFWUL3239-24-PINK](#) [C2015A.12.04](#) [C2015A.12.05](#) [C2015A.12.08](#) [C2015A.12.10](#) [C2015A.12.19](#)  
[C2016A.12.05](#) [C2016A.12.07](#) [C2065A.12.02](#) [C77653-000](#) [220368-001](#) [8916-GRY-500](#) [8918-RED-100](#) [8919-DK-BLU-1000](#) [8919-YEL-100](#)  
[8920-YEL-100](#) [9242833001](#) [933205-000](#) [2841/7-YELLOW-1000](#) [2842/7-ORANGE-100](#) [2842/7-RED-1000](#) [2843/19-BLUE-100](#) [2843/1-](#)  
[YELLOW-100](#) [2843/7-GREEN-100](#)