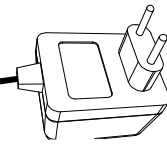




1s - 60 hour start-stop timer module

VM141

Buffered remote pushbutton inputs

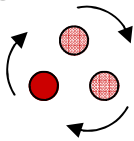


12VDC/100mA

START-button

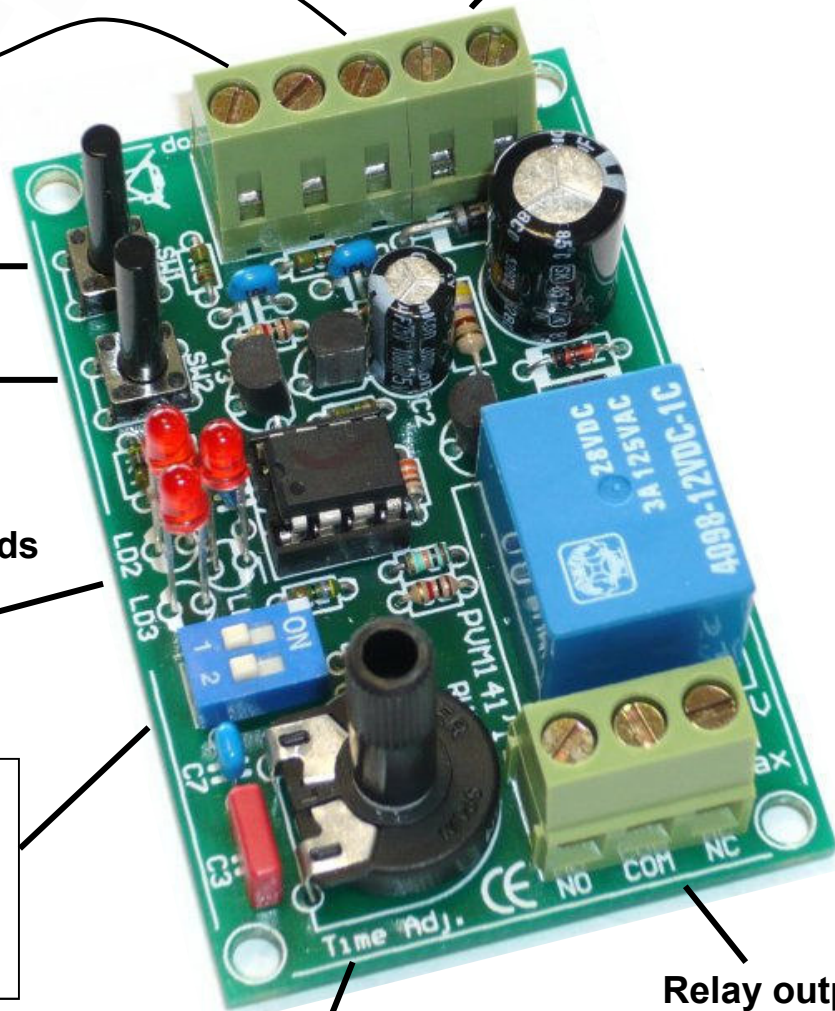
STOP-button

Timing indicator leds

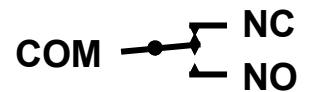


Range select:

- 1.. 6s
- 1.. 60s
- 1.. 60 min
- 1.. 60 hours



Relay output
3A max.



Time adjust

Features & specifications:

- Wide timing range
- Easy time setting
- Led animation during operation
- On-board START-STOP buttons
- Non retriggerable
- Power-on trigger is possible
- Debounced buffered inputs avoid false triggering
- Compact size
- Front panel mountable
- Adjustable delay: 1s - 60h
- Power supply: 12VDC / 100mA
- NO/NC relay: 24VAC/DC 3A max.
- Dimensions: 70x45x20mm



X-ON Electronics

Largest Supplier of Electrical and Electronic Components

Click to view similar products for [Velleman](#) manufacturer:

Other Similar products are found below :

[80-7352](#) [AIM60005](#) [AIM60100](#) [AIM6010A](#) [AIM603000](#) [AIM6030A](#) [AIM6050](#) [AIM60500](#) [AIM605000](#) [AIM701000](#) [AIM7015A](#)
[AIM703000](#) [AS11](#) [AS12](#) [AS20](#) [AVM6030](#) [AVM7030](#) [AVM70300](#) [BITC50N1](#) [BITC50N2](#) [BITC50N3](#) [BITC50N4](#) [DCM140](#) [DEM400](#)
[DEM500](#) [DEM700](#) [DEM701](#) [DVM821](#) [DVM841](#) [DVM853](#) [DVM855](#) [DVM892N](#) [EMDIN03](#) [K1803](#) [K2622](#) [K8060](#) [KA05](#) [K/CAP1](#)
[K/CAP2](#) [K/DIODE1](#) [K/RES-E12](#) [K/RES-E3](#) [K/TRANS1](#) [LAB1](#) [MK100](#) [MK102](#) [MK103](#) [MK109](#) [MK111](#) [MK112](#)