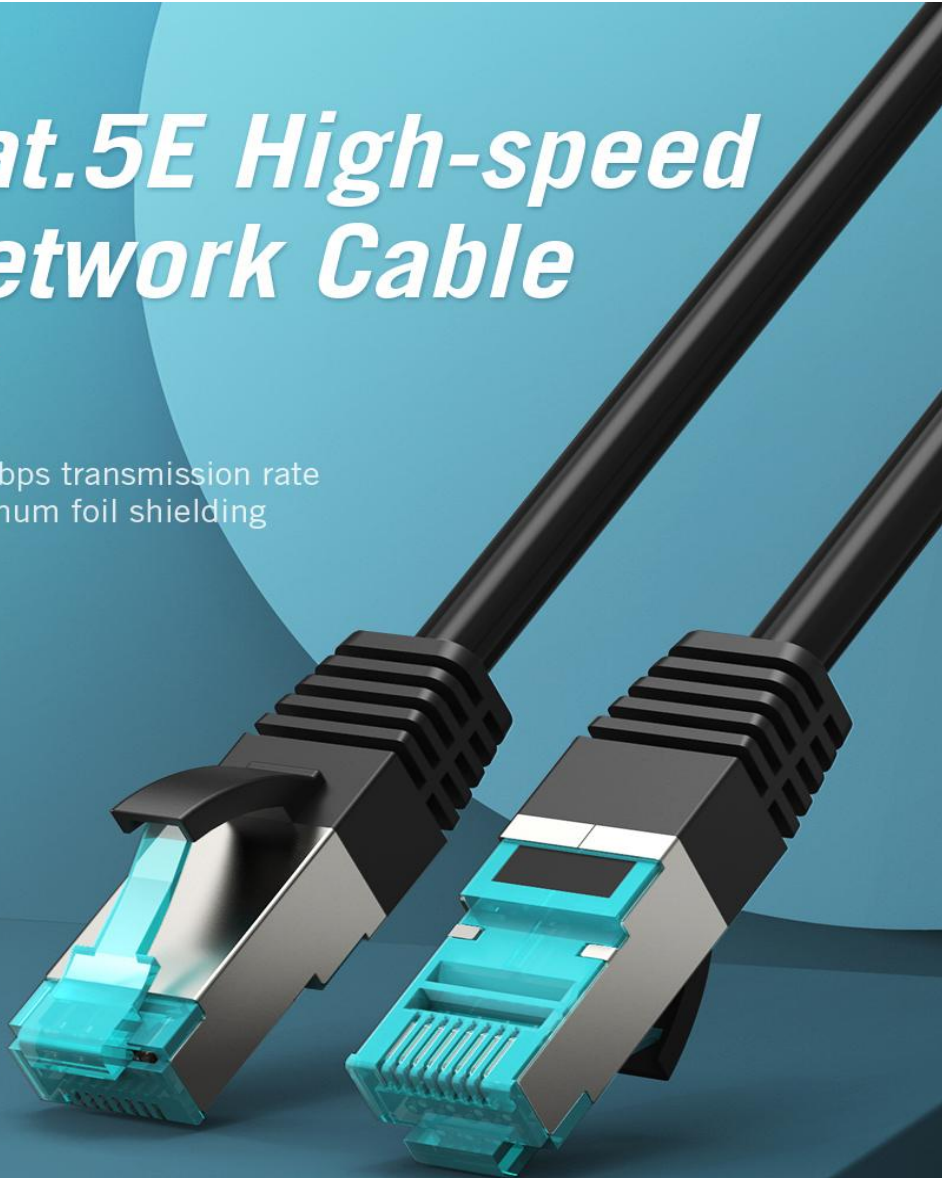


**Network Cable**

# *Cat.5E High-speed Network Cable*



100Mbps transmission rate  
Aluminum foil shielding



Pure copper core



Twisted pair anti-interference



Gold-plated contacts



Soft PVC body

# 100Mbps Transmission Rate



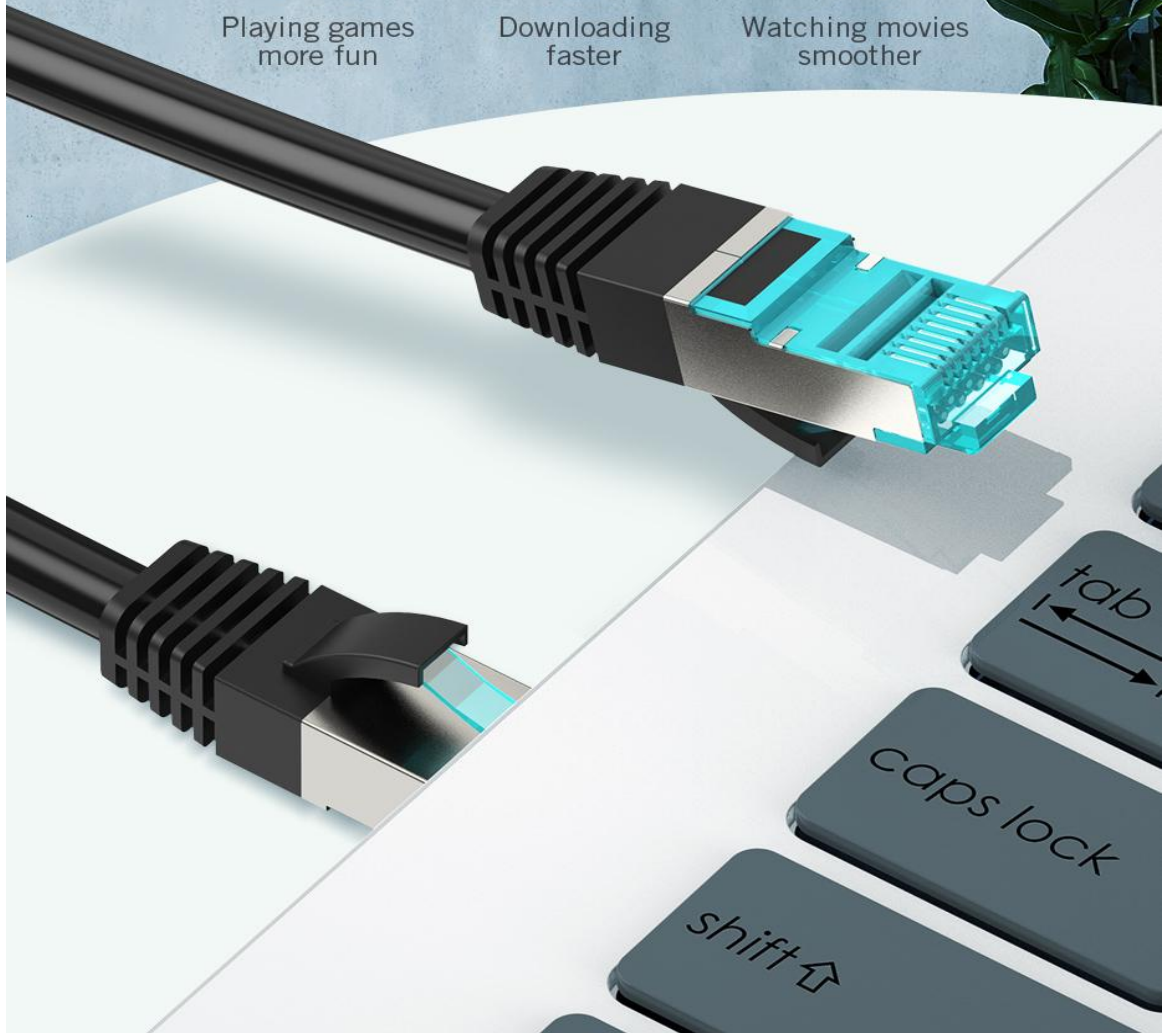
Playing games  
more fun



Downloading  
faster



Watching movies  
smoother





*No delay to play  
computer games*



*No buffering to watch  
high-definition movies*

# Wide Range of Applications

Compatible with RJ45 port



Desktop



Laptop



TV



Router



Switch

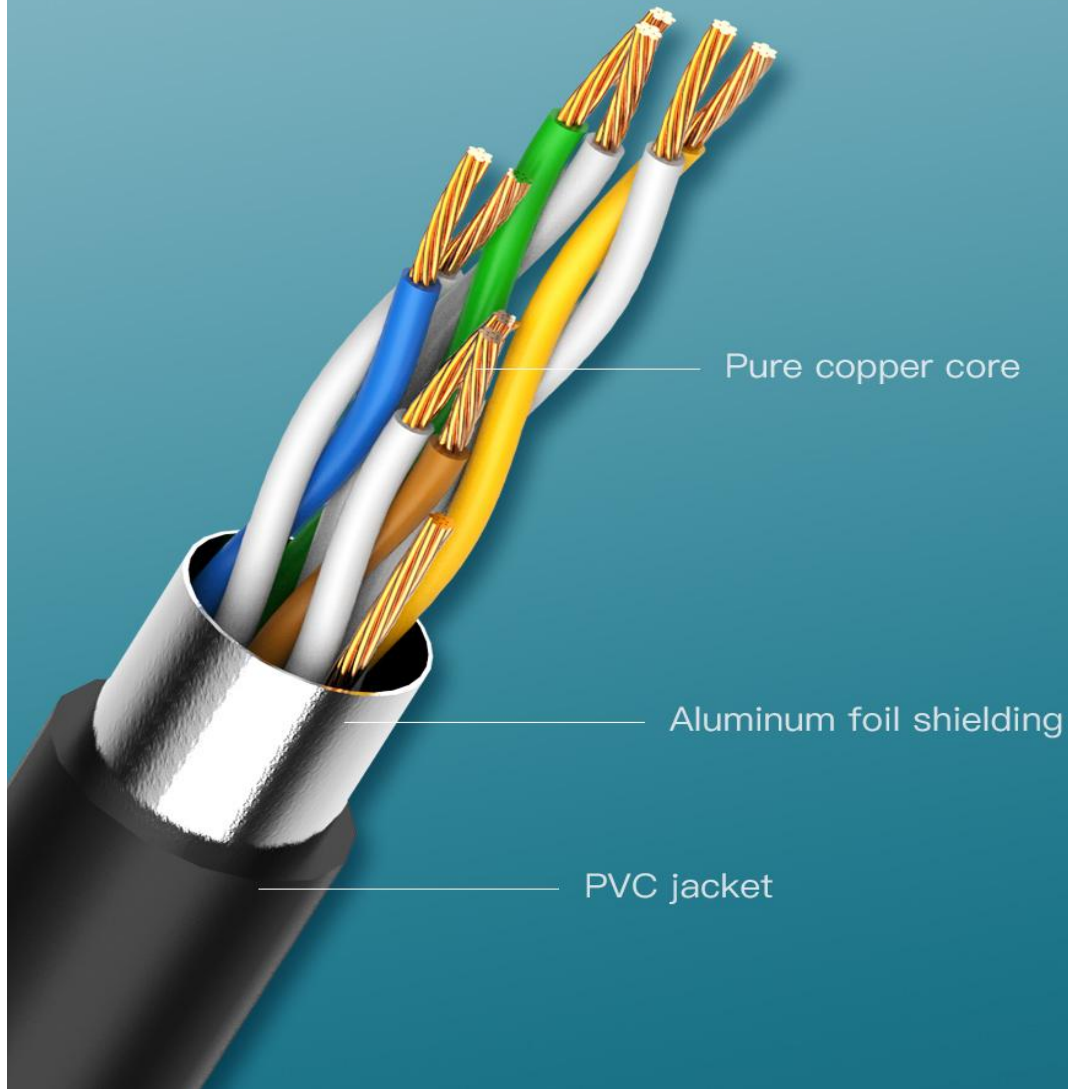


ADSL



MODEM

# *Advanced Engineering*



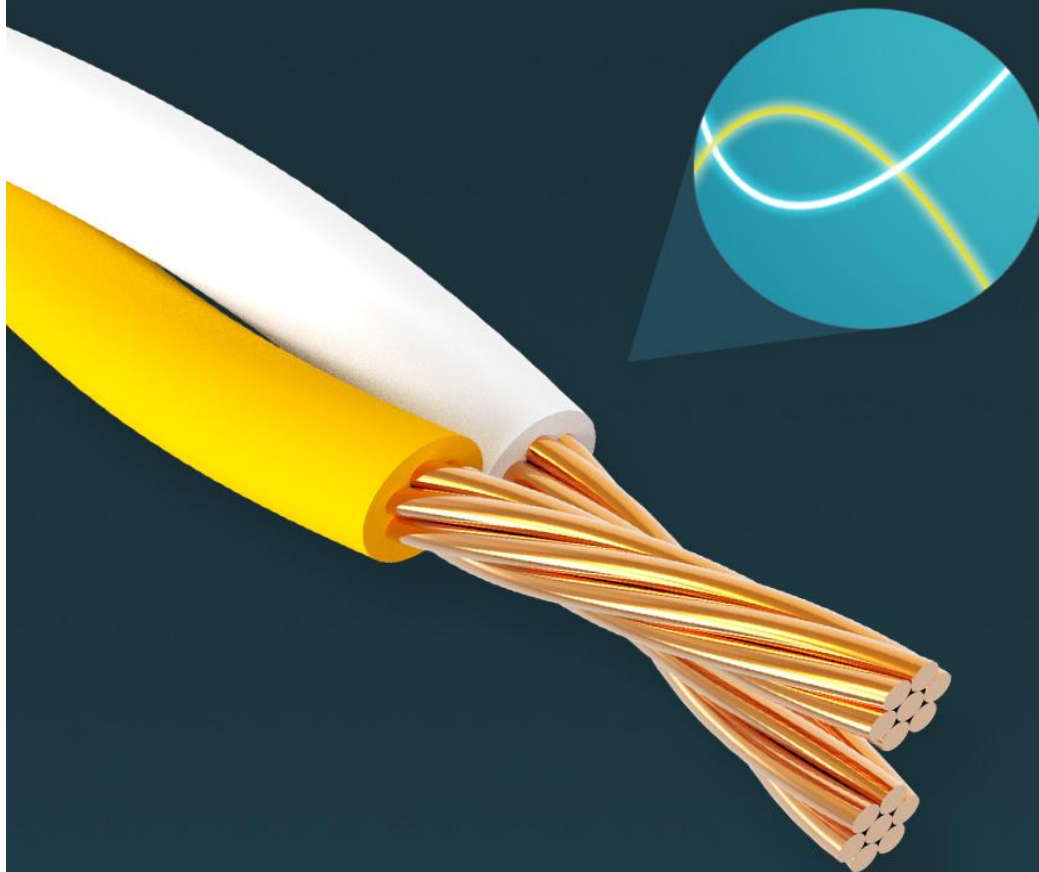
# ***Stable without Dropping***

Each core consists of 7 independent cores with 0.16mm OD



# ***Eight-core Twisted Pair Anti-interference***

26AWG pure copper core, each two cores are twisted together  
Resist external electromagnetic interference



# ***Copper Shell Nickel-plated Crystal Head***

Anti-interference and pluggable





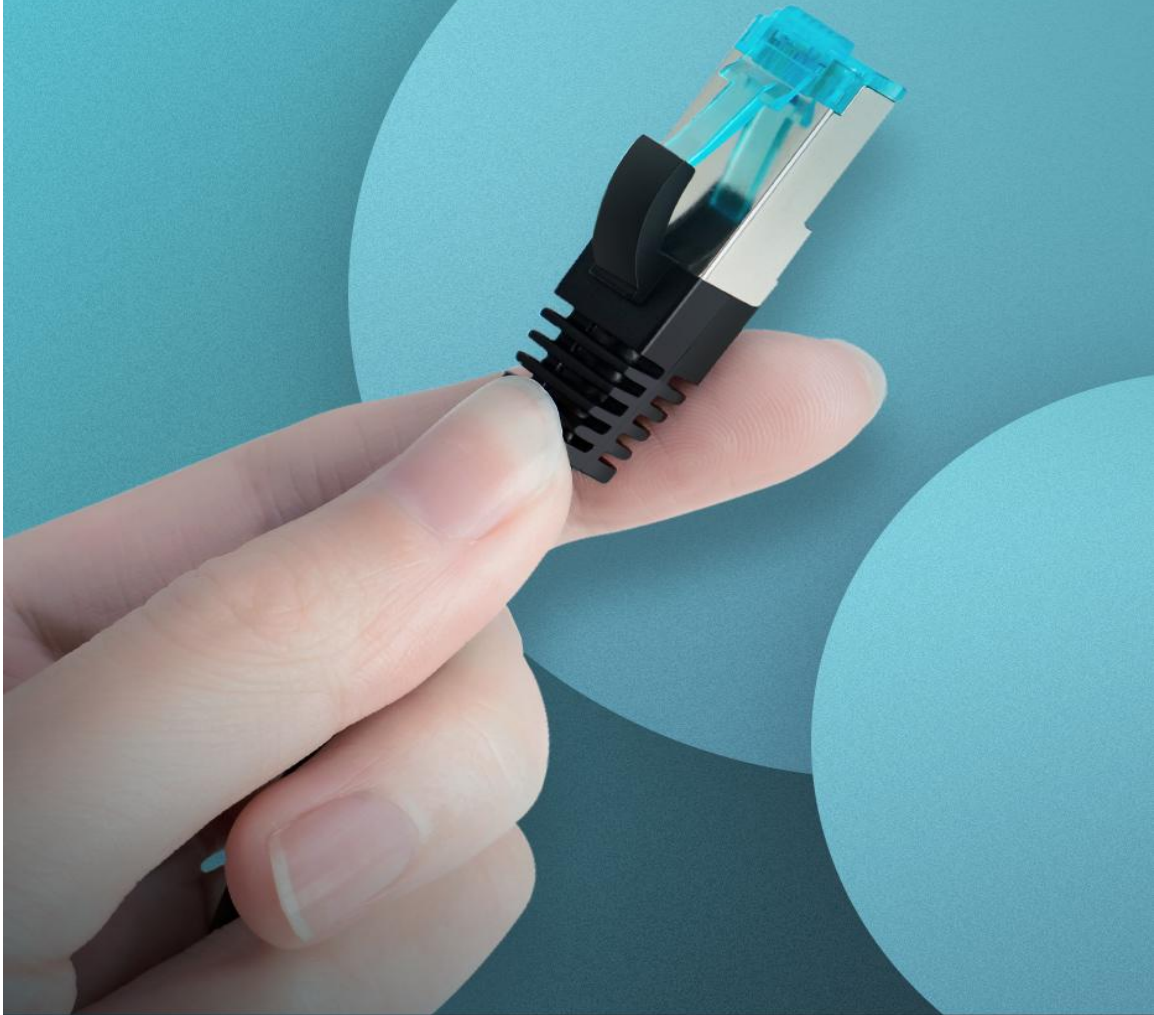
# ***Trigeminal Chip Gold-plated Contacts***

Wear-resistant, anti-oxidation  
long-lasting signal is still as stable as ever



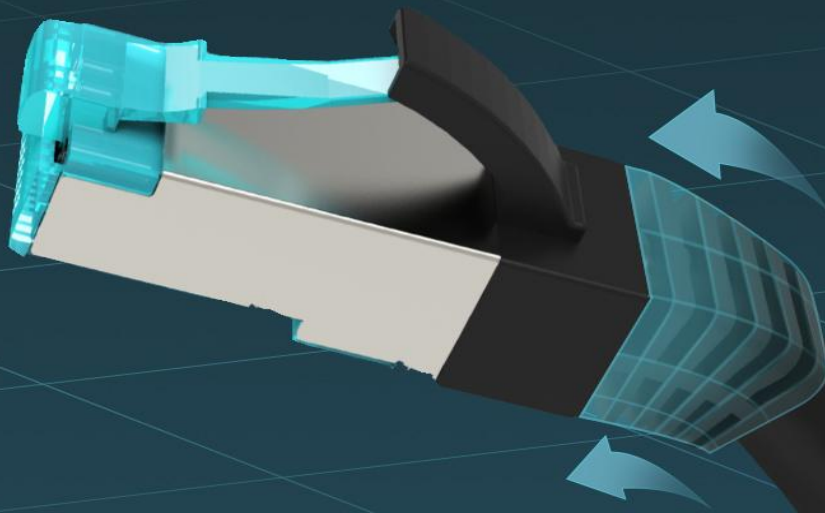
# *Soft Shrapnel Card*

Comfortable and convenient to press



## ***Durable Long-net Tail***

The joint adopts an integrated injection molding process the high-toughness and long-net tail wear-resistant and anti-folding



# ***Sturdy PVC Jacket***

Wear-resistant, stretch-resistant  
rugged and durable



# ***Bolded to 5.5mm***

Strengthen cable durability  
suitable for high-demand wiring





**Cable ID: 180911002-F5-BK-1.5M-8**

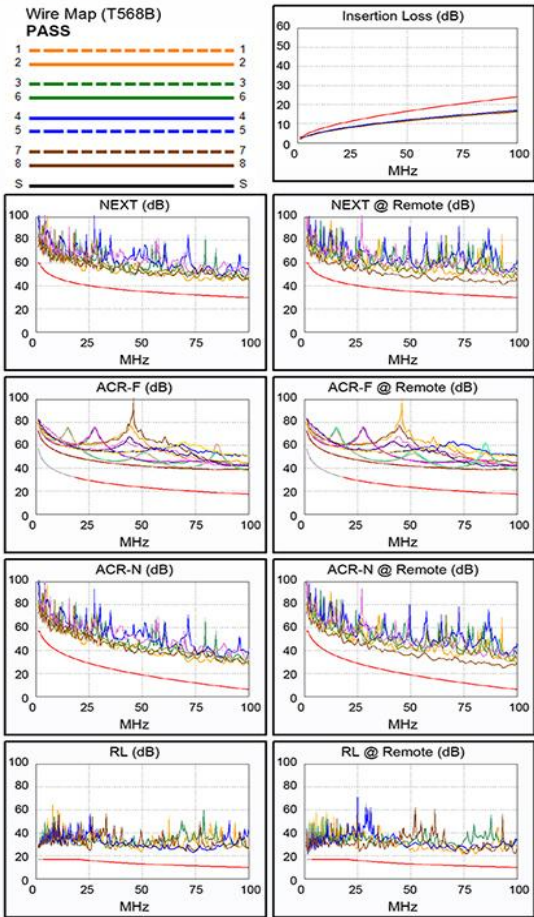
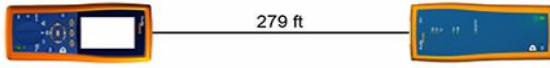
Date / Time: 10/07/2018 02:07:58 PM  
 Headroom 10.4 dB (NEXT 36-45)  
 Test Limit: TIA Cat 5e Channel  
 Cable Type: Cat 5e F/UTP  
 NVP: 69.0%

Operator: Your Name  
 Software Version: 2.7800  
 Limits Version: 1.9500  
 Calibration Date:  
 Main (Tester): 07/28/2017  
 Remote (Tester): 07/28/2017

**Test Summary: PASS**

Model: DTX-1800  
 Main S/N: 9393047  
 Remote S/N: 9393048  
 Main Adapter: DTX-CHA002  
 Remote Adapter: DTX-CHA002

Length (ft), Limit 328	[Pair 78]	279
Prop. Delay (ns), Limit 555	[Pair 45]	440
Delay Skew (ns), Limit 50	[Pair 45]	29
Resistance (ohms)	[Pair 45]	17.7
Insertion Loss Margin (dB)	[Pair 45]	7.1
Frequency (MHz)	[Pair 45]	100.0
Limit (dB)	[Pair 45]	24.0



**Worst Case Margin Worst Case Value**

PASS	MAIN	SR	MAIN	SR
Worst Pair	36-45	36-45	12-36	36-45
NEXT (dB)	11.3	10.4	13.8	10.5
Freq. (MHz)	7.0	18.6	97.3	93.3
Limit (dB)	49.6	42.5	30.3	30.6
Worst Pair	12	36	36	36
PS NEXT (dB)	13.1	12.3	13.5	12.3
Freq. (MHz)	71.5	30.4	97.0	93.5
Limit (dB)	29.6	35.9	27.3	27.6

PASS	MAIN	SR	MAIN	SR
Worst Pair	45-36	36-45	78-45	78-45
ACR-F (dB)	15.7	15.6	20.2	20.1
Freq. (MHz)	2.0	2.0	100.0	100.0
Limit (dB)	51.4	51.4	17.4	17.4
Worst Pair	45	45	45	45
PS ACR-F (dB)	16.8	16.7	20.1	20.4
Freq. (MHz)	1.0	1.1	99.8	98.5
Limit (dB)	54.4	53.4	14.4	14.5

N/A	MAIN	SR	MAIN	SR
Worst Pair	36-45	36-45	12-36	36-45
ACR-N (dB)	12.6	11.9	20.9	17.3
Freq. (MHz)	2.3	3.4	97.3	93.3
Limit (dB)	54.3	50.7	6.6	7.5
Worst Pair	36	36	36	36
PS ACR-N (dB)	14.0	13.5	20.5	19.2
Freq. (MHz)	2.3	3.4	97.0	93.5
Limit (dB)	51.3	47.7	3.7	4.4

PASS	MAIN	SR	MAIN	SR
Worst Pair	78	78	12	12
RL (dB)	8.3	7.9	9.8	9.9
Freq. (MHz)	25.5	25.9	49.5	74.5
Limit (dB)	15.9	15.9	13.1	11.3

Compliant Network Standards:  
 10BASE-T      100BASE-TX  
 100BASE-T    ATM-25      100BASE-T4  
 ATM-155      100VG-AnyLan    ATM-51  
 TR-16 Active    TR-16 Passive    TR-4



CE certification



FCC certification



Rohs certification



UL certification



*Office wiring*



*Home renovation*



*Internet cafe wiring*



*Hotel apartment*



# *Multiple Lengths*

*Short meters: 0.75m*

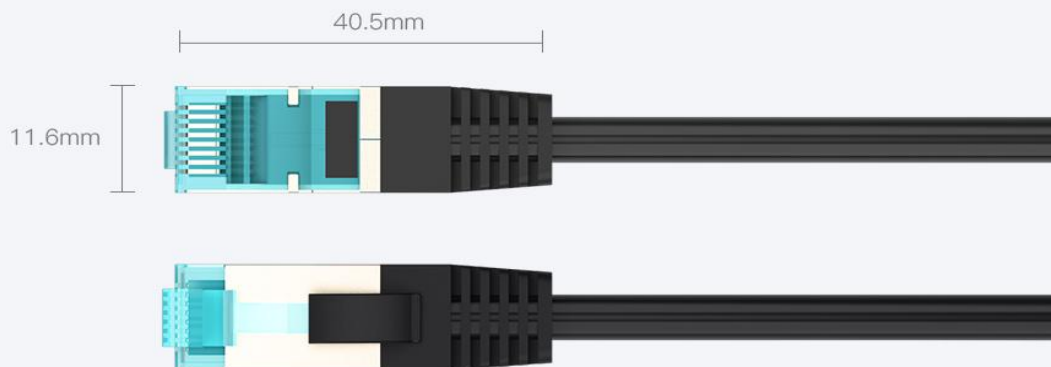


*Long meters: 30m*

# Product Parameters

Brand:	Vention
Name:	Cat.5E FTP Patch Cable
Model:	VAP-B05-B
Color:	Black
Interface Type:	RJ45/8P8C
Crystal Head Material:	PC+ Copper Shell Nickel-plated
Transmission Rate:	100Mbps
Transmission Bandwidth:	155MHz
Conductor Material:	Pure Copper
Shielding:	Aluminum Foil
Jacket Material:	PVC
AWG:	26AWG
OD:	5.5mm
Length:	0.75m-30m
Warranty:	1 Year
Packing:	PE Bag / Kraft Paper Box

Note: All data is obtained from Vention Lab.



Note: All data are manually measured, maybe some tolerable.

**PE Bag (0.75-15m)**

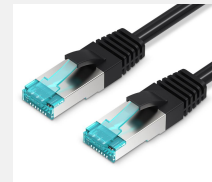


**Kraft Paper Box(20-30m)**



Note: There may be packaging differences for different lengths or batches. Please refer to the physical packaging.

Length	Art.No.	EAN Code
0.75m	VAP-B05-B075	6922794713598
1m	VAP-B05-B100	6922794713642
1.5m	VAP-B05-B150	6922794713604
2m	VAP-B05-B200	6922794713673
3m	VAP-B05-B300	6922794713697
5m	VAP-B05-B500	6922794713703
8m	VAP-B05-B800	6922794713710
10m	VAP-B05-B1000	6922794713611
15m	VAP-B05-B1500	6922794713635
20m	VAP-B05-B2000	6922794713659
25m	VAP-B05-B2500	6922794713666
30m	VAP-B05-B3000	6922794713680



#### Package Contents

Network Cable x 1

#### Packaging Information

Packing Dimension	cm	
Packing Weight	kg	
Carton Dimension	48*29*30cm(0.75-20m),46*40*40cm(25m),52*47*27cm(30m)	
Carton Qty	150pcs(0.75m),120pcs(1-1.5m),100pcs(2m),60pcs(3m),50pcs(5-8m),40pcs(10m),30pcs(15m),28pcs(20m),12pcs(25-30m)	<a href="http://www.ventioncable.com">www.ventioncable.com</a>
Carton Weight	4.9kg(1m)	
Package	PE Bag(0.75-15m),Color Box(20-30m)	

## X-ON Electronics

Largest Supplier of Electrical and Electronic Components

*Click to view similar products for [Ethernet Cables / Networking Cables](#) category:*

*Click to view products by [Vention](#) manufacturer:*

Other Similar products are found below :

[73-7795-1](#) [MCJB2-10P6Q7-120](#) [84909-0204](#) [1200700174](#) [1200860368](#) [E16A06002M030](#) [E200102-009-S1](#) [AX105346-EW](#) [MT14-187L](#)  
[MWDM2L-51GS-6J1-2.82B](#) [ERWPAB3002M005](#) [190-038045-01](#) [NK5EPC1GRY](#) [NK5EPC4Y](#) [1969343-6](#) [ICD056GVP163D-C0](#)  
[C5UMB3FBG](#) [C631208025](#) [C631208035](#) [C6F1106015](#) [2142758-2](#) [2168427-2](#) [21949-1](#) [2J1866A](#) [RJF SFTP 5E 0500](#) [AX100351](#)  
[UTPCH14GYY](#) [45-5684](#) [09459711142](#) [100345-1301](#) [MWDM2L-25P-8K1-.500B](#) [MWDM6L-31S-6C4-.375H](#) [73-7793-1](#) [74764-1101](#)  
[WHU18-3636-048](#) [RJF2SA2G05100BTX](#) [1R4000A39M030](#) [UTPSP6GYY](#) [UTPSP2GYY](#) [UTPSP10GYY](#) [UTPCH5GYY](#) [UTP28SP15M](#)  
[UTP28CH100OR](#) [74764-2301](#) [E66A06002M020](#) [NPC-5E-010-GY](#) [SAC-5P-MS/ 1.0-920/FS SCO AR](#) [1-3636-601-5211](#) [1-3636-600-5212](#) [1-3636-461-5208](#)