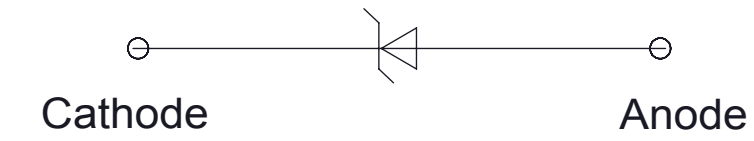
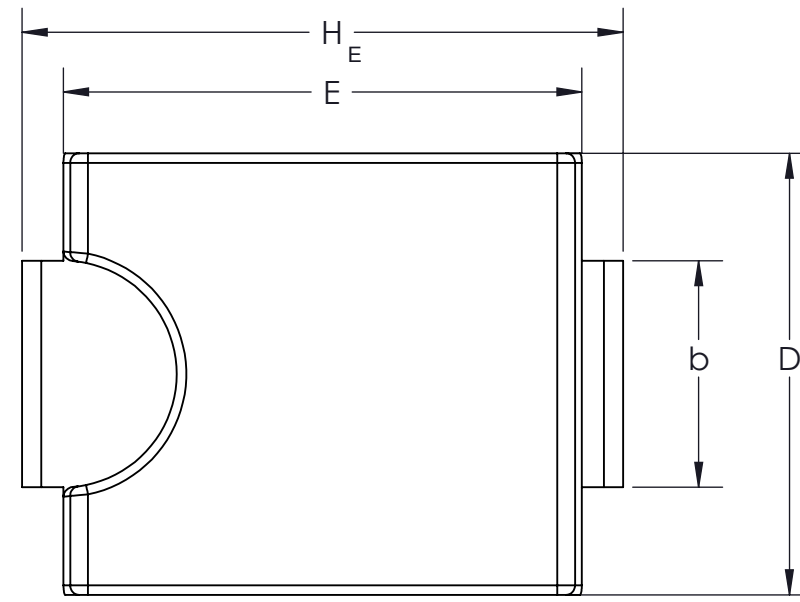
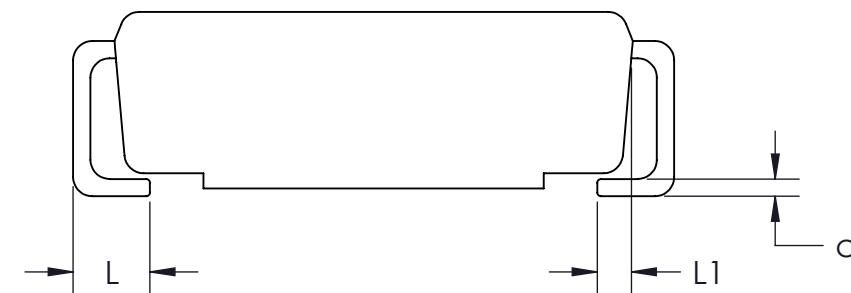
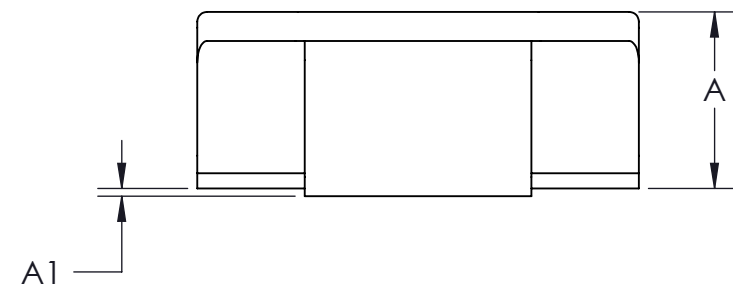


VICOR CONFIDENTIAL  
 THIS DOCUMENT AND THE DATA DISCLOSED HEREIN OR HEREWITH IS NOT TO BE REPRODUCED, USED OR DISCLOSED IN WHOLE OR IN PART TO ANYONE WITHOUT THE PERMISSION OF VICOR CORP.

REVISIONS				
REV	DESCRIPTION	DATE	APPROVED	
01	RELEASED PER E9830122	AK 2/13/99		
2	Revised per ECO request E081582	REJH 08/06/08	SA	
3	REVISED PER E101188	KUK 09/24/10	AR	



DIM	MILLIMETERS			INCHES		
	MIN	NOM	MAX	MIN	NOM	MAX
A	1.90	2.13	2.41	0.075	0.084	0.095
A1	0.05	0.10	0.15	0.002	0.004	0.006
b	2.92	3.00	3.07	0.115	0.118	0.121
c	0.15	0.23	0.30	0.006	0.009	0.012
D	5.59	5.84	6.10	0.220	0.230	0.240
E	6.60	6.86	7.11	0.260	0.270	0.280
HE	7.75	7.94	8.13	0.305	0.313	0.320
L	0.76	1.02	1.27	0.030	0.040	0.050
L1	0.51 REF			0.020 REF		



### ELECTRICAL CHARACTERISTICS

VICOR P/N 19180-XXX	V <sub>RWM</sub> V	I <sub>R</sub> @ V <sub>RWM</sub> µA	Breakdown Voltage				V <sub>C</sub> @ I <sub>PP</sub>		θV <sub>BR</sub> %/°C
			V <sub>BR</sub>			@ I <sub>T</sub>	V <sub>C</sub>	I <sub>PP</sub>	
			Min	Nom	Max	mA	V	A	
19180-240	20.5	5	22.8	24	25.2	1	33.2	45	0.094
19180-510	43.6	5	48.5	51	53.6	1	70.1	21.4	0.102

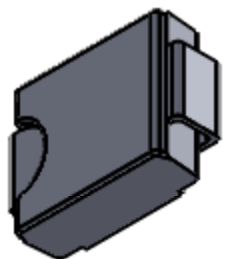
**ELECTRICAL CHARACTERISTICS** T<sub>A</sub> = 25°C unless otherwise noted, V<sub>F</sub> = 3.5 V Max. @ I<sub>F</sub> (Note 5) = 100 A

Symbol	Parameter
I <sub>PP</sub>	Maximum Reverse Peak Pulse Current
V <sub>C</sub>	Clamping voltage @ I <sub>PP</sub>
V <sub>RWM</sub>	Working Peak Reverse Voltage
I <sub>R</sub>	Maximum Reverse Leakage Current @ V <sub>RWM</sub>
V <sub>BR</sub>	Breakdown Voltage @ I <sub>T</sub>
I <sub>T</sub>	Test Current
θV <sub>BR</sub>	Maximum Temperature Coefficient of V <sub>BR</sub>
I <sub>F</sub>	Forward Current
V <sub>F</sub>	Forward Voltage @ I <sub>F</sub>

### MAXIMUM RATINGS

Rating	Symbol	Value	Unit
Peak Power Dissipation @ T <sub>L</sub> = 25°C, Pulse Width = 1 ms	P <sub>PK</sub>	1500	W
DC Power Dissipation @ T <sub>L</sub> = 75°C Measured Zero Lead Length	P <sub>D</sub>	4.0	W
Derate Above 75°C		54.6	mW/°C
Thermal Resistance, Junction-to-Lead	R <sub>θJL</sub>	18.3	°C/W
DC Power Dissipation @ T <sub>A</sub> = 25°C Derate Above 25°C	P <sub>D</sub>	0.75	W
Thermal Resistance from Junction-to-Ambient	R <sub>θJA</sub>	165	°C/W
Forward Surge Current @ T <sub>A</sub> = 25°C	I <sub>FSM</sub>	200	A
Operating and Storage Temperature Range	T <sub>J</sub> , T <sub>stg</sub>	-65 to +150	°C

NOTES:  
 1. CONTROLLING DIMENSION : INCH  
 2. "b" DIMENSION SHALL BE MEASURED WITHIN DIMENSION L1.  
 3. RoHS COMPLIANT, LEAD FREE PER CST-0001 LATEST REVISION.



DRAWN	DATE				
A. KUMAR	2/13/99				
MATERIAL	UNLESS OTHERWISE SPECIFIED DIMENSIONS ARE INCH (MM) TOLERANCES ARE: DECIMALS ANGLES X.XX [X.X] = ±0.01 [0.25] X.XXX [X.XX] = ±0.005 [0.127]	<b>DTVS XXXV 1.5KW</b> <b>SMC 403</b>			
FINISH	THIRD ANGLE PROJECTION				
		SIZE	CAGE CODE	DWG NO	REV
DO NOT SCALE DRAWING		<b>C</b>	<b>67131</b>	<b>19180-XXX</b>	<b>3</b>
		SCALE 10 : 1		SHEET 1 OF 1	

## X-ON Electronics

Largest Supplier of Electrical and Electronic Components

*Click to view similar products for [ESD Suppressors / TVS Diodes](#) category:*

*Click to view products by [Vicor](#) manufacturer:*

Other Similar products are found below :

[NTE4902](#) [P4SMAJ15A](#) [P4SMAJ26A](#) [SMAJ400CA-TP](#) [TGL34-47CA](#) [ESDAULC45-1BF4](#) [SM1605E3/TR13](#) [SMF20A-TP](#) [P4SMAJ12A](#)  
[CPDUR24V-HF](#) [CPDQC5V0USP-HF](#) [CPDQC5V0-HF](#) [MPLAD30KP45CAE3](#) [MMBZ27VCLQ-7-F](#) [MMAD1108/TR13](#) [MPLAD30KP24A](#)  
[ACPDQC5V0R-HF](#) [DFLT170A-7](#) [NTE4900](#) [NTE4926](#) [NTE4938](#) [SMF22A-TP](#) [SMF12A-TP](#) [SLVU2.8-TP](#) [SMLJ6.5CA-TP](#) [SMAJ6.5CA-](#)  
[TP](#) [MMAD1108E3/TR13](#) [D5V0M1U2LP3-7](#) [SMAJ400A-TP](#) [AOZ8811DT-03](#) [AOZ8831DI-05](#) [AOZ8831DT-03](#) [SMAJ188CA](#) [3SMC33CA](#)  
[BK](#) [CPDQC3V3C-HF](#) [CPDQC12VE-HF](#) [MPLAD30KP170CA](#) [82357120100](#) [5.0SMLJ15CA-TP](#) [5KP18A-TP](#) [P6KE8.2A-TP](#)  
[MPLAD30KP43CAE3](#) [SMAJ43A-TP](#) [D5V0F6U8LP33-7](#) [TVS5501V10MUT5G](#) [5.0SMLJ24CA-TP](#) [SMAJ110CA-TP](#) [MPLAD15KP75CAE3](#)  
[MMAD1103e3/TR13](#) [DFLT40AQ-7](#)