

8

7

6

5

4

3

2

1

VICOR CONFIDENTIAL

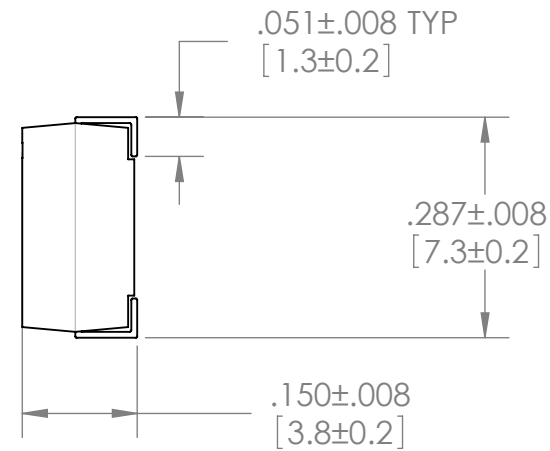
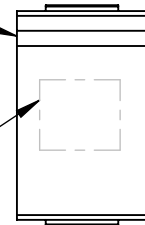
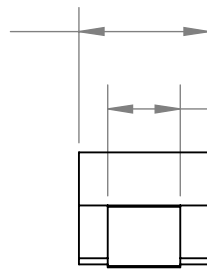
THIS DOCUMENT AND THE DATA DISCLOSED HEREIN OR HEREWITH IS NOT TO BE REPRODUCED, USED OR DISCLOSED IN WHOLE OR IN PART TO ANYONE WITHOUT THE PERMISSION OF VICOR CORP.

REVISIONS

REV	DESCRIPTION	DATE	APPROVED
01	RELEASE PER E0130103	3/29/01	JMR
2	REVISED PER E060049A	11/13/06	CR
3	REVISED PER E100698A	5/19/10	JG
4	REVISED PER E100764	06/07/10	KUK

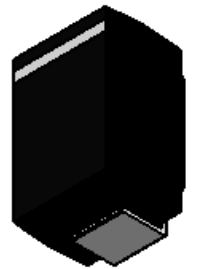
POLARITY (+)

SEE NOTE 1

.169±.012
[4.3±0.3].094±.004 TYP
[2.4±0.1]

NOTES:

1. COMPONENT VALUE & VOLTAGE MAY BE MARKED IN APPROX AREA AS SHOWN ABOVE; INK FOR MARKING SHOULD MEET THE REQUIREMENTS FOR SOLVENT RESISTANCE PER MIL-STD-202, METHOD 215
2. THE LAST THREE DIGITS OF THE VICOR PN (-XXX) REPRESENT THE COMPONENT VALUE (EXAMPLES: 23484-477= 470uF).
3. METRIC DIMENSIONS WILL GOVERN; ENGLISH DIMENSIONS ARE ROUNDED & FOR REF ONLY
4. RoHS COMPLIANT, LEAD FREE PER CST-0001 LATEST REVISION.



ELECTRICAL SPECIFICATIONS

-337

-477

CAPACITANCE VALUE

330uf

470uf

VOLTAGE RATING

6.3V

6.3V

CAPACITANCE TOLERANCE

±20%

±20%

ESR @ 100.0 KHz

40.0mΩ MAX.

35.0mΩ MAX.

OPERATING TEMP RANGE

-55°C to +125°C

-55°C to +125°C

DISSIPATION FACTOR @ 25°C

≤ 0.10

≤ 0.15

DC LEAKAGE CURRENT

207.9uA MAX

296.1uA MAX

MAXIMUM RIPPLE CURRENT @ 100KHz

3000mA

3000mA

TESTING CONDITIONS @ 25°C

120Hz @ .5 Vrms

120Hz @ .5 Vrms

DRAWN	DATE
P.E.IENI	3/01

SWD

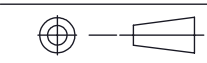
MATERIAL

UNLESS OTHERWISE SPECIFIED
DIMENSIONS ARE INCH [MM]
TOLERANCES ARE:
DECIMALS ANGLES
X.XX [X.X] = ±0.01 [0.25] ±1°
X.XXX [X.XX] = ±0.005 [0.127]

CAP. TANTALUM POLYMER SMD
"E" CASE, ±20%, 6.3V

FINISH

THIRD ANGLE PROJECTION



DO NOT SCALE DRAWING

SIZE	CAGE CODE	DWG NO	REV
B	67131	23484-XXX	4

SCALE 4 : 1

SHEET 1 OF 1

8

7

6

5

4

3

2

1

X-ON Electronics

Largest Supplier of Electrical and Electronic Components

Click to view similar products for [Tantalum Capacitors - Polymer](#) category:

Click to view products by [Vicor](#) manufacturer:

Other Similar products are found below :

[2R5TAE680ML](#) [NTP337M2.5TRV\(25\)F](#) [T58BB226M025C0150](#) [23484-337](#) [TCJP105M025R0500E](#) [TCJA226M016R0300E](#)
[TCN4227M016R0070E](#) [TCJD227M006R0035E](#) [TCJD337M006R0050E](#) [TCJD227M016R0050E](#) [TCJD157M016R0050E](#)
[TCJA336M016R0200E](#) [TCJB157M006R0035E](#) [TCME477M006R0007E](#) [T591D476M020ATE050](#) [T58BB476M016C0200](#)
[TCME337M010R0015E](#) [TCQD227M004R0025E](#) [TCJY227M010R0015](#) [T520D227M2R5ATE040](#) [T520Y687M004ATE025](#)
[T521D106M050ANE090](#) [T521D186M050ATE090](#) [T521D476M016ATE090](#) [T541X337M010AH6530](#) [T541X687M006AH6510](#)
[T59EE156M063E0100](#) [TCQY336M016R0070E](#) [TCBD157M006CRSZ0H00E](#) [T520V157M004ATE015](#) [T520T106M12RATE150](#)
[T545V476M016ATE045](#) [T527I107M006ATE200](#) [T523H157M025APE070](#) [T525B336M006AHE080](#) [TCNX476M035R0150](#)
[F381A336MSALZT](#) [FA1E566M10126VR](#) [T520X477M006AHE040](#) [T541X336M050BH6710](#) [T541X337M016BH6720](#)
[293D106X9025C2WE3](#) [NTP106M10TRB\(200\)F](#) [NTP157M10TRD\(40\)F](#) [NTP337M2.5TRV\(15\)F](#) [NTP157M10TRD\(55\)F](#)
[NTP686M4TRA\(180\)F](#) [T520D107M010ATE0807280](#) [T55D107M010C0018](#) [T59EE337M016C0025](#)