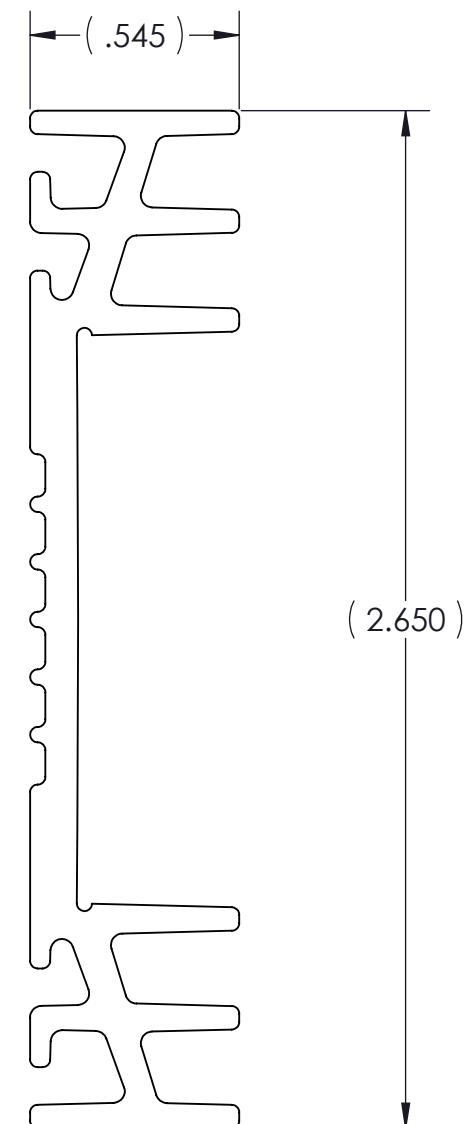
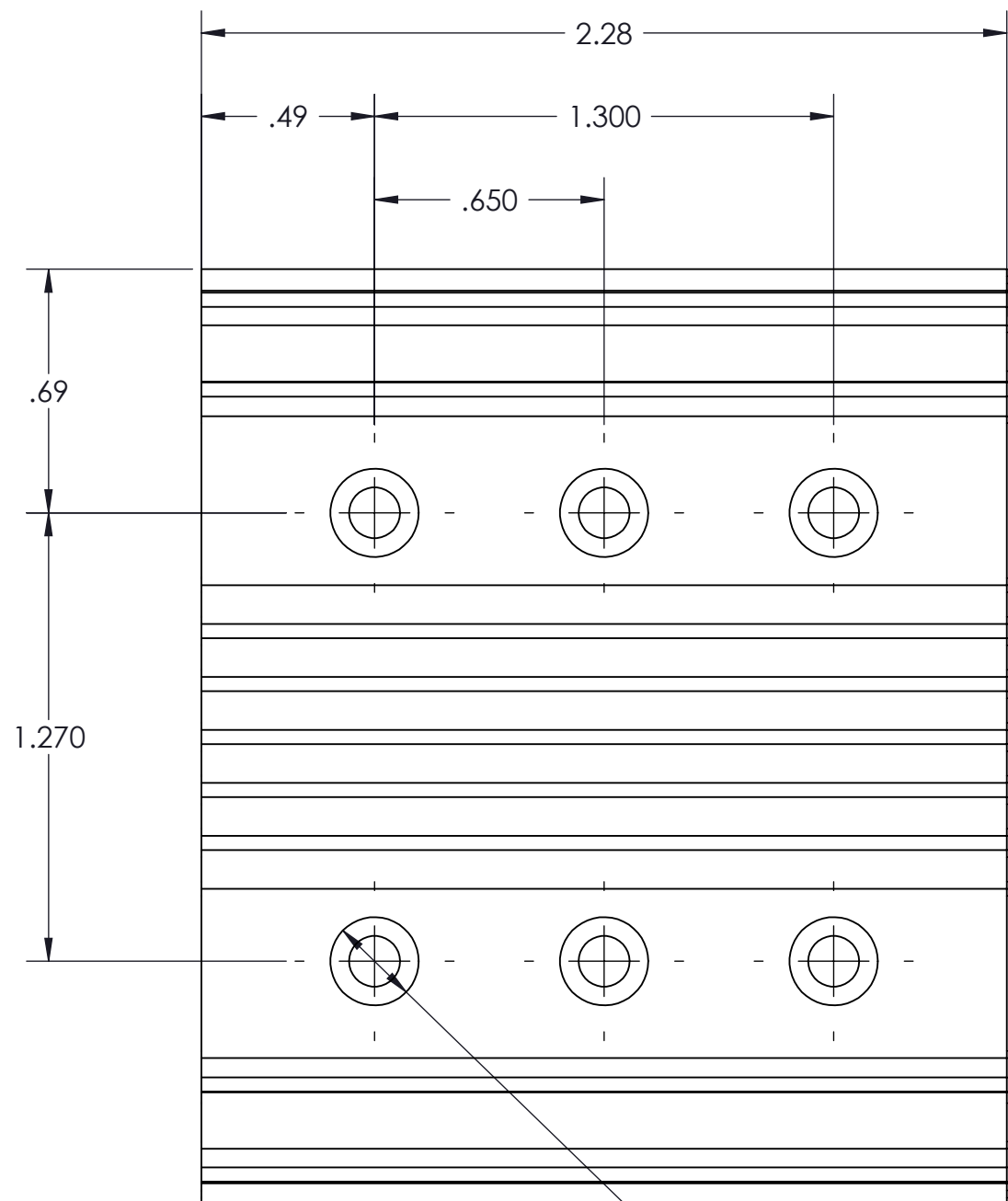


VICOR CONFIDENTIAL

THIS DOCUMENT AND THE DATA DISCLOSED HEREIN OR HEREWITH IS NOT TO BE REPRODUCED, USED OR DISCLOSED IN WHOLE OR IN PART TO ANYONE WITHOUT THE PERMISSION OF VICOR CORP.

REVISIONS

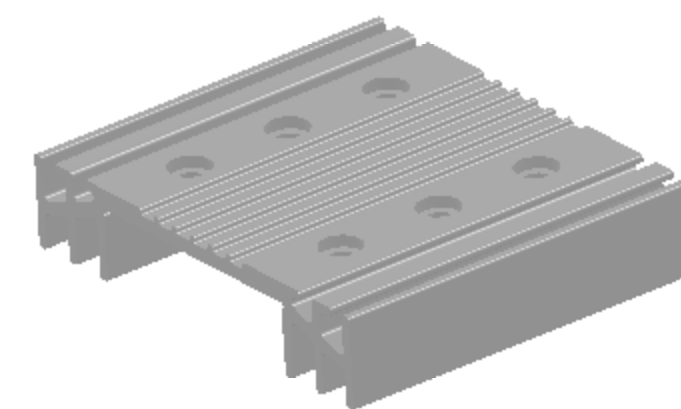
REV	DESCRIPTION	DATE	APPROVED
1	RELEASED PER E053437	LEK 11/15/05	EF
2	REVISED PER E090943	AR 06/05/09	REJH
3	REDRAWN PER E100903	DCS 7/14/10	KUK


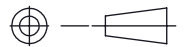


ϕ .143/.149 (#27) THRU
 ϕ .250 C'BORE X .070 DP
 (6) PL.

NOTES:

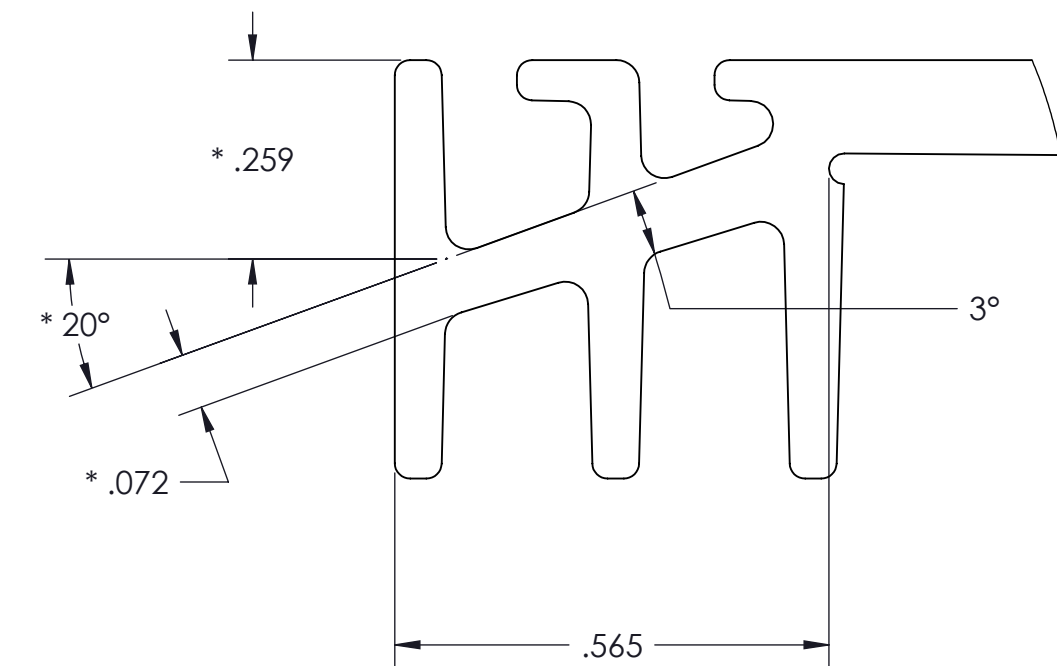
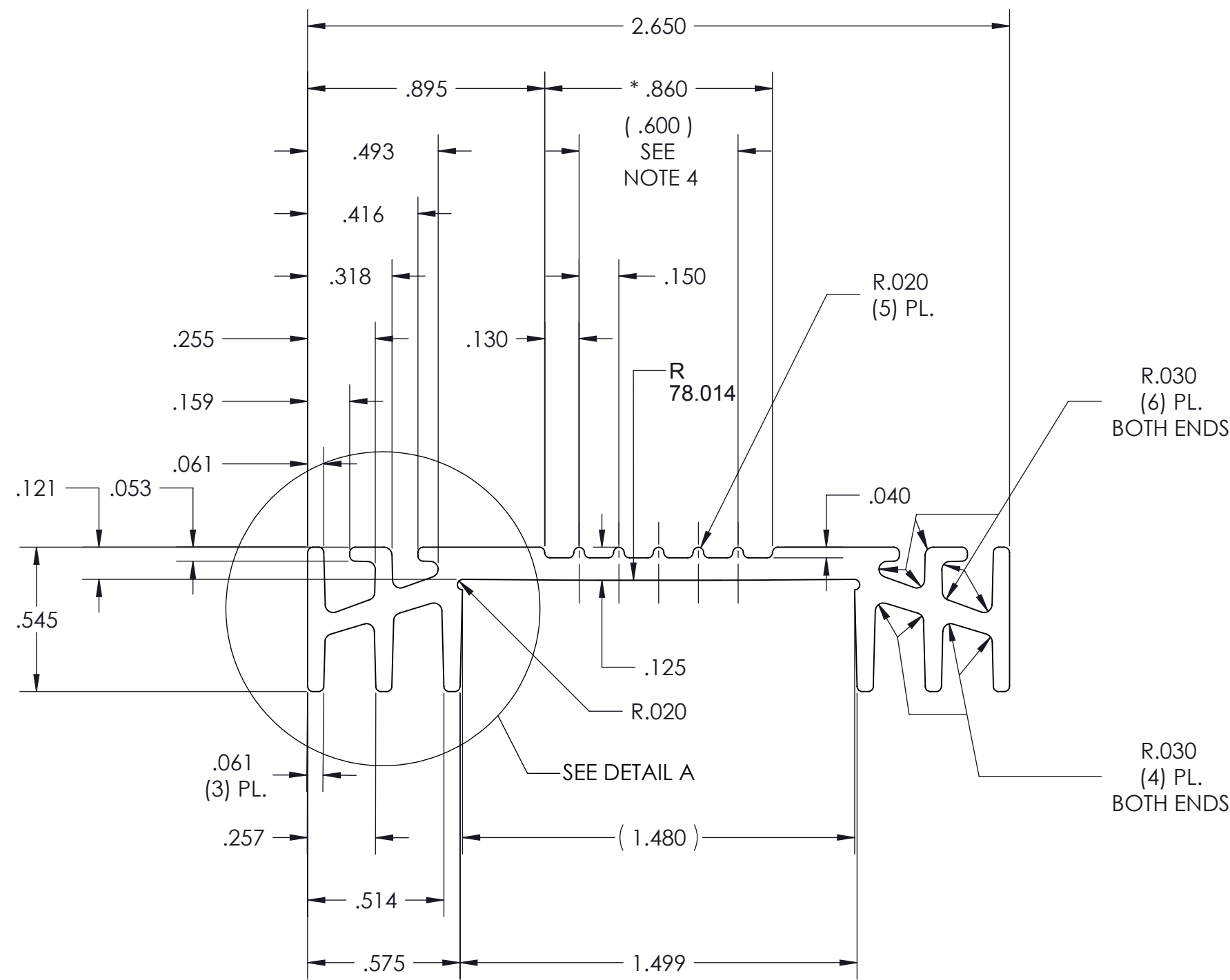
1. MATERIAL: EXTRUSION, SEE SHEET 2 OF 2
2. REMOVE ALL LOOSE AND HANGING BURRS, OTHERWISE, BURRS SHALL NOT EXCEED .003.
3. CLEAR FINISH, RoHS COMPLIANT CHROMIUM FREE PER CST-0001 LATEST REVISION.
4. \square DENOTES CRITICAL CHARACTERISTIC FOR LOT INSPECTION.
5. DIMENSIONS ARE INCHES ONLY.



DRAWN	DATE				
L. KNIGHT	5/23/05				
MATERIAL	UNLESS OTHERWISE SPECIFIED DIMENSIONS ARE INCH [MM]	HEATSINK, MICRO, LOW PROFILE (2.28L X 2.65 W)			
SEE NOTES	TOLERANCES ARE: DECIMALS ANGLES X.XX [X.X] = ±0.01 [0.25] ±1° X.XXX [X.XX] = ±0.005 [0.127]				
FINISH	THIRD ANGLE PROJECTION				
SEE NOTES	 DO NOT SCALE DRAWING	SIZE	CAGE CODE	DWG NO	REV
		C	67131	30095	3
		SCALE 2 : 1		SHEET 1 OF 2	

THIS DOCUMENT AND THE DATA DISCLOSED HEREIN OR HEREWITH IS NOT TO BE REPRODUCED, USED OR DISCLOSED IN WHOLE OR IN PART TO ANYONE WITHOUT THE PERMISSION OF VICOR CORP.

REV	DESCRIPTION	DATE	APPROVED
	SEE SHEET 1 OF 2		



DETAIL A
SCALE 4 : 1

NOTES:

1. MATERIAL: ALUMINUM 6063-T5.
2. * DENOTES DIMENSION TO THEORETICAL SHARP CORNER.
3. DIMENSIONS SHOWN CAN BE USED ON OPPOSITE ENDS AS NEEDED.
4. (4) EQUAL SPACES @ .150=.600 (TOL. TO BE NON-CUMULATIVE)
5. UNLESS OTHERWISE SPECIFIED:
A. DRAFT ANGLES TO BE 1.5°.
B. RADII TO BE 0.020.
6. DIMENSIONS ARE INCHES ONLY.

DRAWN A. RAGIPANI	DATE 06/05/09	SWD		
MATERIAL SEE NOTES	UNLESS OTHERWISE SPECIFIED DIMENSIONS ARE INCH [MM] TOLERANCES ARE: DECIMALS ANGLES X.XX [X.X] = ±0.01 [0.25] ±1° X.XXX [X.XX] = ±0.005 [0.127]	HEATSINK, MICRO, LOW PROFILE (2.28L X 2.65W), EXTRUSION		
FINISH SEE NOTES	THIRD ANGLE PROJECTION 	SIZE C	CAGE CODE 67131	DWG NO 30095
		SCALE 2 : 1	REV 3	
		SHEET 2 OF 2		

X-ON Electronics

Largest Supplier of Electrical and Electronic Components

Click to view similar products for [Heat Sinks](#) category:

Click to view products by [Vicor](#) manufacturer:

Other Similar products are found below :

[581102B00000G](#) [656-15ABPE](#) [657-20ABPNE](#) [7020B-TC12-MTG](#) [73452PPBA](#) [7G0011A](#) [PF720G](#) [A22-4026](#) [120-1873-007](#) [HAH10L](#)
[1542616-1](#) [HS-2506-F1](#) [HS-87M0-F2](#) [218-40CTE3](#) [25-7520](#) [SW50-4G](#) [231-75PAB-13V](#) [231-75PAB-15V](#) [253-122ABE-22](#) [PSC22CB](#)
[HAF10L](#) [HAQ10T](#) [D10100-28](#) [BDN183CBA01](#) [3-21053-4](#) [32438](#) [TX0506-1B](#) [TX1806B](#) [LAE66A3CB](#) [WA-DT2-101E](#) [511-3U](#)
[73381PPBA](#) [73403PPBA](#) [7G0047C](#) [COMX-440-HSP](#) [510-12M](#) [D10650-40T5](#) [V8511 Y](#) [APF40-40-13CB/A01](#) [780653U04500G](#) [ATS-](#)
[54310K-C2-R0](#) [FK 216 CB SA](#) [FK 231 SA 220](#) [648-51AB](#) [657-20ABPESC](#) [2341BG](#) [679-25AG](#) [FK 212 CB SA](#) [FK225 SA L1](#) [680-5K](#)