

PROPRIETARY DATA:
 This document and information contained
 may not be reproduced, used or disclosed
 without prior written permission of WESTCOR
 a division of VICOR Corporation.

NOTES: UNLESS OTHERWISE SPECIFIED

1. MATERIALS: UL RECOGNIZED 94V-2 FLAMMABILITY RATING CLASS B (130°C) REQUIRED.

1.1 CORE: TOROID, $\mu = 5000$

MAGNETICS: ZJ-43806-TC OR

PERMACOR: 87-9040-26 OR

SHANGHAI SUPER LIGHT ELECTRONICS COMPONENTS LTD.

P/N: T38X19X6.35-C. MATERIAL R5K (CAN BE USED IF ROHS COMPLIANT)

1.2 WIRE: UL RECOGNIZED 130°C MINIMUM RATING MAGNET WIRE. APPROVED MFR: ESSEX
 OTHER MFR HAS TO BE ROHS COMPLIANT CERTIFIED BEFORE USE.

1.3 OUTER WRAP: 3M #69 OR #1350F, OR SAINT-GOBAIN #M706.

1.4 MATERIAL CERTIFICATE OF COMPLIANCE REQUIRED.

2. SPECIFICATIONS:

2.1 L = 82 μ H MIN/COIL (1 KHZ, <1Vrms)

2.2 DCR = 0.6 MOHMS MAX/COIL

2.3 POWER LOSS = 4.3 W MAX @ 60A/COIL

2.4 HI-POT TEST COIL TO COIL, 250VDC TO INSURE INTEGRITY OF WINDING
 INSULATION COVERING HAS NOT BEEN BREACHED.

3. CONSTRUCTION:

3.1 WIND COILS EVENLY SPACED (NOTE POLARITY)

3.2 REMOVE INSULATION AND TIN LEADS APPROX FLUSH WITH THE COIL AS SHOWN
 (I.E. COIL MUST REST FLAT ON PCB). LEADS MUST BE TANGENT TO THE CORE.

3.3 WRAP INDUCTOR WITH TAPE, (PER NOTE 1.3). MARK PART NUMBER AND REVISION
 IN (BLACK) APPROX. WHERE SHOWN, USING A PERMANENT MARKING METHOD.

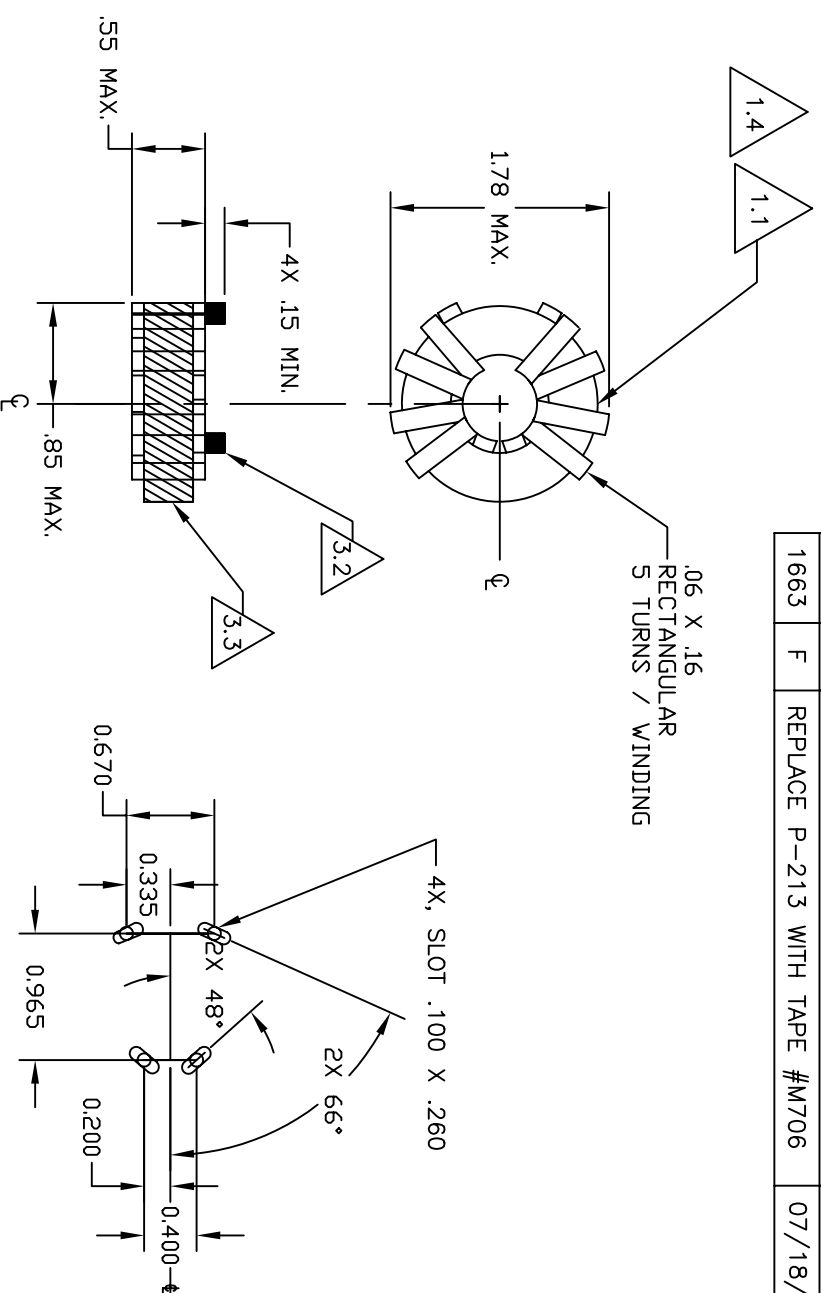
3.4 COIL LEADS MUST FUNCTION FIT INTO A JIG MADE PER THE DIMENSIONS SHOWN
 ON "FORMING JIG MTG HOLE PATTERN" TO INSURE PROPER POSITION AND ANGLE.

DWG NO. 36-00029-07

SH 1 REV F

REVISIONS

ECO	REV	DESCRIPTION	DATE	APPROVED
687	A	CHANGED MATERIAL	7-25-97	RBD
730	B	CHG: NOTE 2.1, WAS: L = 88 μ H.	12-18-97	RBD
1023	C	CHG: NOTES 2.1, & 3.3 PER ECO	05-15-00	RBD
---	C1	ADD PERMACORE 87-9040-26	11/10/00	RBD
---	C2	CERT. OF COMPLIANCE CHANGES	6/5/03	RO
1417	C3	ADD SOURCE SHANGHAI SUPER ELECT	09/07/04	RBD
1462	D	ADDED ROHS SPEC NOTE	06/21/05	LGK
1543	E	TAPE # 1350F WAS # 1298	09/01/05	LGK
1663	F	REPLACE P-213 WITH TAPE #M706	07/18/06	LGK



NOTE: CERTIFICATION OF MATERIAL COMPLIANCE REQUIRED.
 COMPLETED ASSEMBLY MUST BE (ROHS) COMPLIANT
 PER VICOR SPEC CST-0001.

UNLESS OTHERWISE SPECIFIED DIMENSIONS ARE IN INCHES TOLERANCES ARE:		CONTRACT NO. ---		APPROVALS		DATE		IND COMMON MODE 110 μ H 60A	
FRACTIONS ± ---	DECIMALS .XX ± .05 .XXX ± .020	ANGLES ± 3°		M.E. TURRALDE	12/3/96	WESTCOR a division of VICOR Corp.			
MATERIAL SEE NOTES			DRAWN	L.KING	7/25/97	SIZE	CAGE CODE	DWG NO.	REV
FINISH ---			CHECKED	R.B.DRABING	7/25/97	B	---	36-00029-07	F
NEXT ASSY USED ON			APPROVED	R.CABALLERO	12/03/96	SCALE	NTS	FILENAME: 36-00029-07.DWG	SHEET
APPLICATION			DESIGNED						1 OF 1

X-ON Electronics

Largest Supplier of Electrical and Electronic Components

Click to view similar products for [Common Mode Chokes / Filters](#) category:

Click to view products by [Vicor](#) manufacturer:

Other Similar products are found below :

[74279408](#) [PE-62911NL](#) [PE-64683](#) [ST6118T-R](#) [T8114NLT](#) [RD5122-10-6M0](#) [TCM0806G-350-2P-T](#) [TCM0806G-650-2P-T](#) [IND-0110](#)
[UAL21V07012500](#) [UAL21VR0802000](#) [UAL24VR06500CH](#) [UALSC023000000](#) [UALSC1020JH000](#) [UALSC1520JH000](#)
[UALSU16VD30030](#) [UALSU16VD40010](#) [UALSU9H0305000](#) [UALSU9HF060300](#) [UALSU9VD070100](#) [36-00037](#) [5701610000](#)
[UALW21HS072450](#) [UALSU9VD070400](#) [UALSU9HF050500](#) [UALSU9H0208000](#) [UALSCF25081300](#) [UAL24VK06450CH](#)
[PLT10HH501100PNB](#) [PLT10HH401100PNB](#) [PLT10HH1026R0PNB](#) [PE-67531](#) [EXC-X4CH120X](#) [TLH10UB 113 0R5](#) [2752041447](#)
[2752045447](#) [CMS3-11-R](#) [7351V](#) [CMF16-153131](#) [744252510](#) [T8116NLT](#) [FE2X10-4-2NL](#) [744253200](#) [744253101](#) [744252220](#) [TX8111NLT](#)
[UAL30VR3500470](#) [CTX01-19077-R](#) [T8003NLT](#) [CTX01-13663](#)